



# POWERLINK® Network Area Controller

*Web-enabled monitoring and control infrastructure*

The POWERLINK web-enabled network area controller harnesses the power of the Internet to provide a ready means for controlling and monitoring lighting and other loads within a facility. Users will appreciate the simple, intuitive interface for creating schedules, issuing overrides, observing critical loads, and viewing reports. Lights can be monitored and controlled from any computer equipped with an internet connection and a standard web browser. With the POWERLINK Network Area Controller, there is no software to install or maintain.

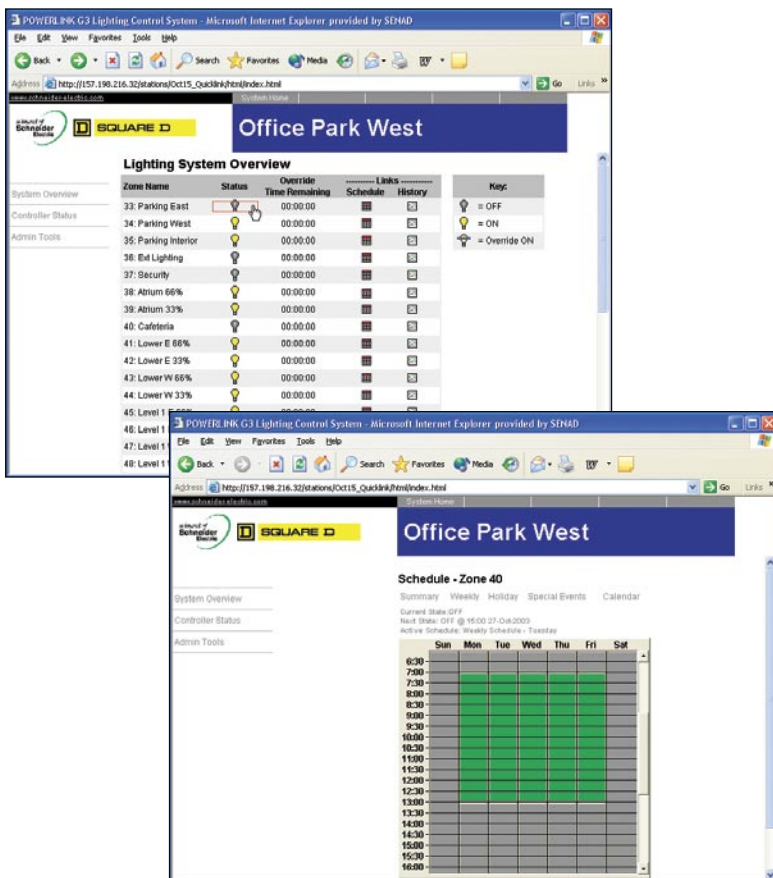
The NAC4 series controller is ideally suited for commercial applications. It features a compact embedded processor platform with flash memory to assure data integrity. The unit can be easily mounted directly to a wall or inside another enclosure.

A single NAC4 controller can be used to support a variety of devices connected to its Ethernet, RS232/485, or its FFT-10 LonWorks ports. The NAC4 also boasts a full array of I/O capabilities for connection to dry-contact, analog, or pulse type devices.

Large scale systems can readily be created by using multiple NAC4 controllers to manage global control functions, share data, and host multiple simultaneous workstations connected over a local network, the Internet, or dial-up modem with optional internal autodial modem.

## Features

- Embedded RISC microprocessor platform with flash memory (no hard drives to fail)
- Liberal onboard I/O with six universal A/D inputs and four digital relay outputs
- Integral web user interface to support many simultaneous users over the Intranet or Internet via a standard web browser
- Cost effective for any size facility



**Transparent  
Ready™**  
Web-enabled Power & Control

a brand of  
**Schneider  
Electric**



## Technical Specifications

### Processor

- 200MHZ RISC
- 64MB RAM, 32MB Flash

### Communications Ports

- (1) 10/100mbit Ethernet; RJ-45
- (1) RS232 port; RJ-45
- (1) RS485 port
- (1) LonWorks FTT-10 with Weidmuller connector (maximum 27 devices)
- Optional 56k modem; RJ11

### Input/ Output

- (4) form C (SPDT) relay outputs rated for 240VAC/DC @ 2A resistive
- (6) universal inputs for Type 3 (10K) Thermistor, 4/20mA current loop, 0 to 10V, or dry contact
- All I/O use screws terminals on 0.2" centers

### Power Supply

- 120VAC, 50/60HZ
- 25VA maximum
- Lead wires for hot/neutral (wire nut), stud for ground connection

### Battery Backup

- Provided for all functions including I/O
- Battery is monitored and trickle charged
- Battery maintains processor for preset period then writes all data to flash
- Maintains clock for a minimum of five years

### Enclosure

- NEMA 1 indoor use only
- Cooling: internal air convection
- Dimensions: 11" wide x 14" high x 2.5" deep

### Environment

- Operating temperature: 0 to 50°C (32°C to 122°F)
- Storage temperature: 0 to 70°C (32°F to 158°F)
- Relative humidity range: 5 to 95%, non-condensing

| FEATURES                 | NAC403QS     |
|--------------------------|--------------|
| Password access          | 4 levels     |
| Floor plan depictions    | Optional     |
| Real time status         | 32 zones     |
| Control overrides        | 32 zones     |
| Time scheduling          | Yes          |
| Holiday scheduling       | Yes          |
| Special event scheduling | 32 zones     |
| Controller access        | (8) NF3000G3 |
| Alarms                   | Optional     |
| Email notification       | Optional     |
| Event log                | Yes          |
| Device Integration       |              |
| Modbus® TCP              | (8) NF3000G3 |
| Modbus RTU integration   | Optional     |
| LonWork integration      | Optional     |
| BacNet integration       | Optional     |

### Quick Start NAC's (NAC403Q3)

The quick start configuration provides users with a low cost web-enabled lighting control system. Designed to operate in conjunction with 3000 level systems, this, "out of the box" NAC gives users essential lighting control features including global overrides and scheduling functions from the convenience of a standard web browser.

Additional capabilities can be added including multiple user accounts, alarming functions, custom reports with custom graphical interfaces and integration with other control devices and systems.

| Catalog # | Description  |
|-----------|--|
| NAC403    | Controller only. No device restriction   |
| NAC403QS  | Controller with quick start station supports a maximum of (8) NF3000G3 controllers |



Visit our Web site at [www.squared.com/powerlink](http://www.squared.com/powerlink)