

# Flashtool Guide

## TABLE OF CONTENTS

<b>1</b>	<b>INSTALLATION</b>	<b>3</b>
1.1	Installation of Lexium CT	3
1.2	Installation of Flashtool	5
<b>2</b>	<b>FLASHING</b>	<b>7</b>
<b>3</b>	<b>KNOWN PROBLEMS</b>	<b>11</b>

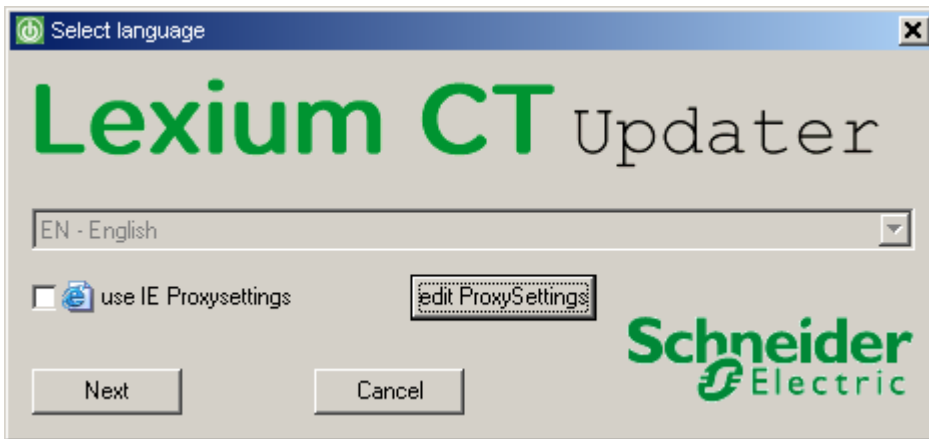
# 1 INSTALLATION

## 1.1 Installation of Lexium CT

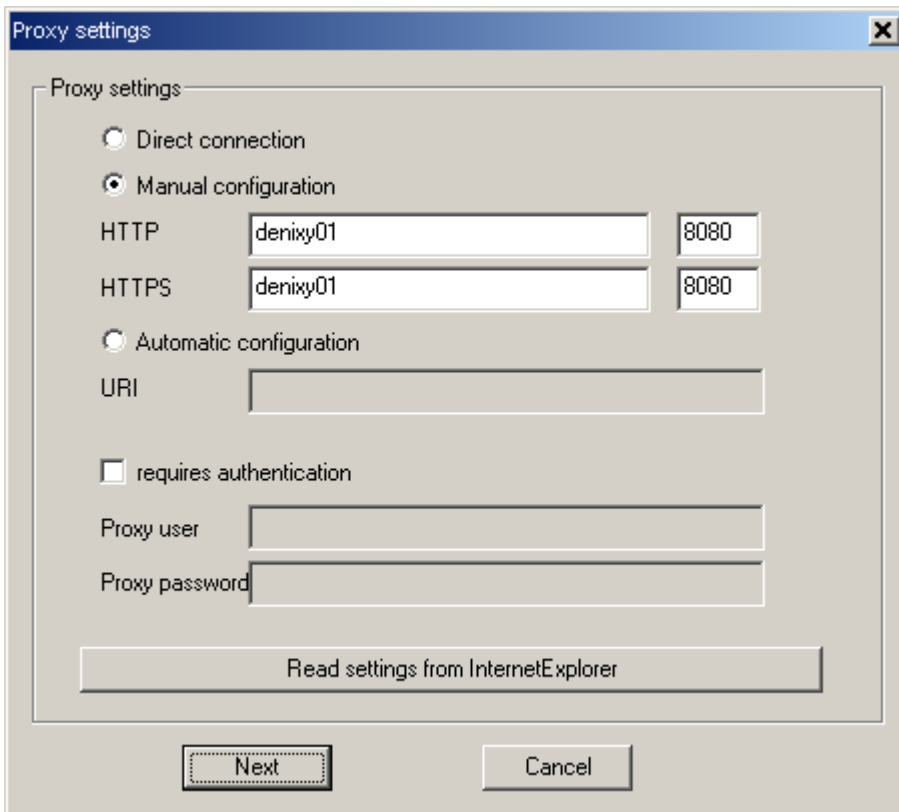
Before installing the Flashtool, the commissioning tool "Lexium CT" has to be installed. The commissioning tool can be downloaded from the Internet, see Download area under:

<http://www.schneider-electric-motion.com>

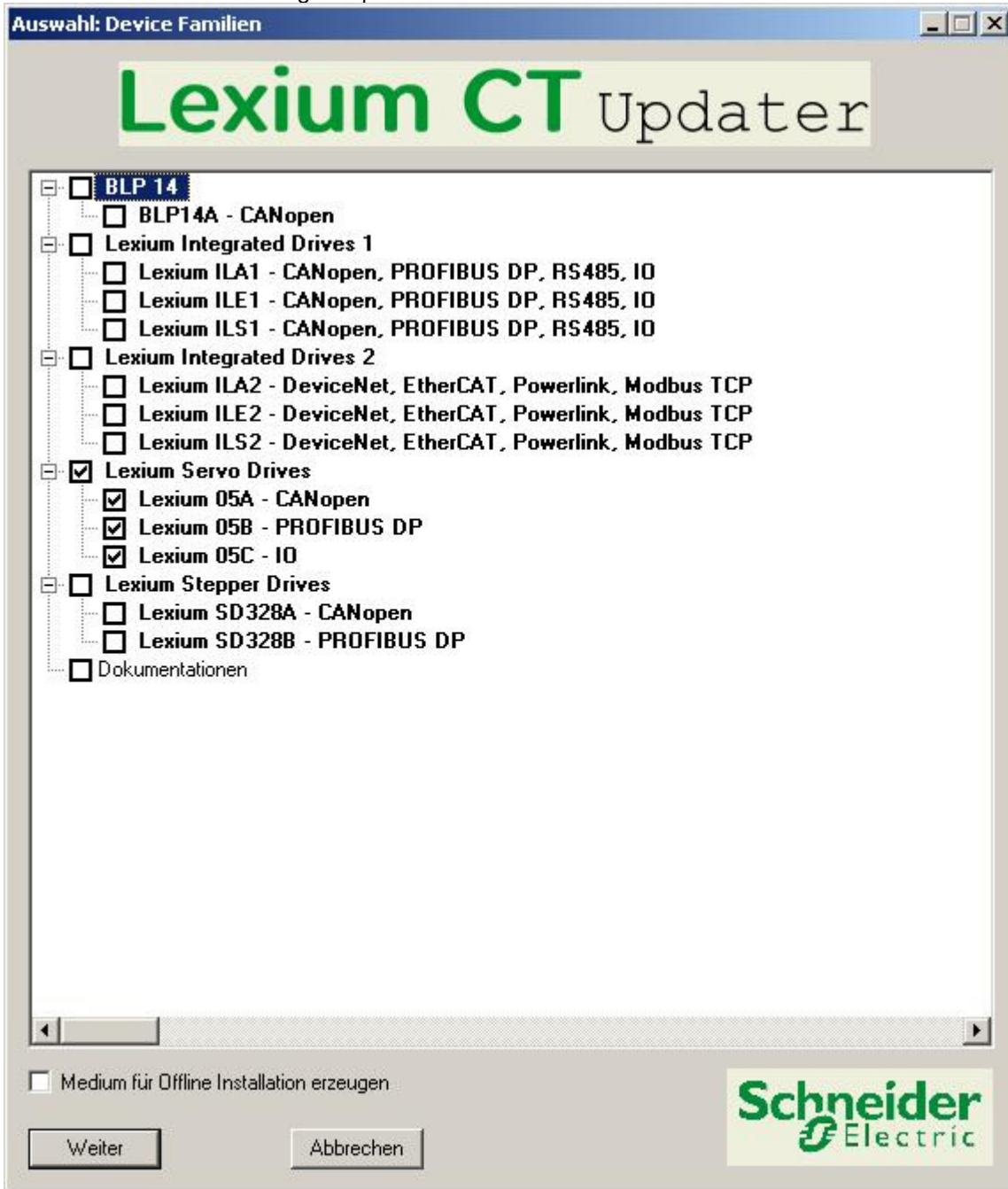
During installation, you may be requested to enter your proxy server address, because the Installer downloads the real Lexium CT from the Internet.



Example proxy setting for access in Niederschopfheim



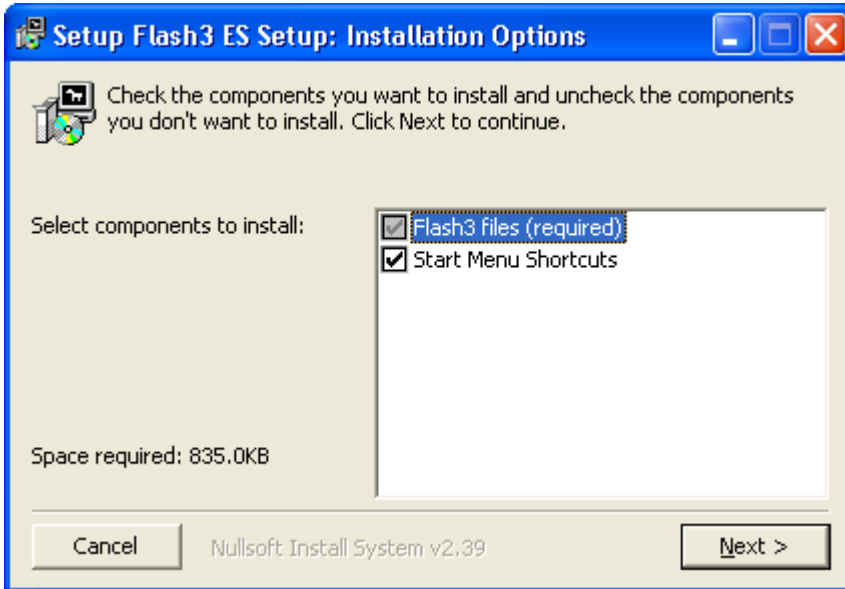
You can choose the following components:



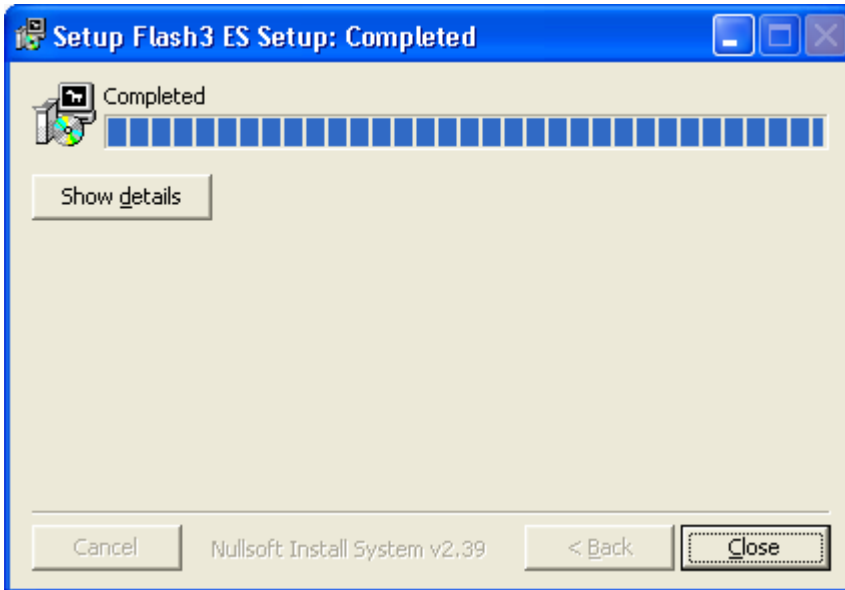
## 1.2 Installation of Flashtool

After installation of 'Lexium CT', the flashtool for programming the firmware has to be installed by activating the setup file: ,setup\_flash3\_ES.exe'

Proceed with the following steps:

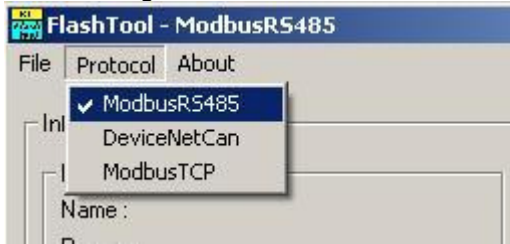


After setup is completed, the following dialog is shown:

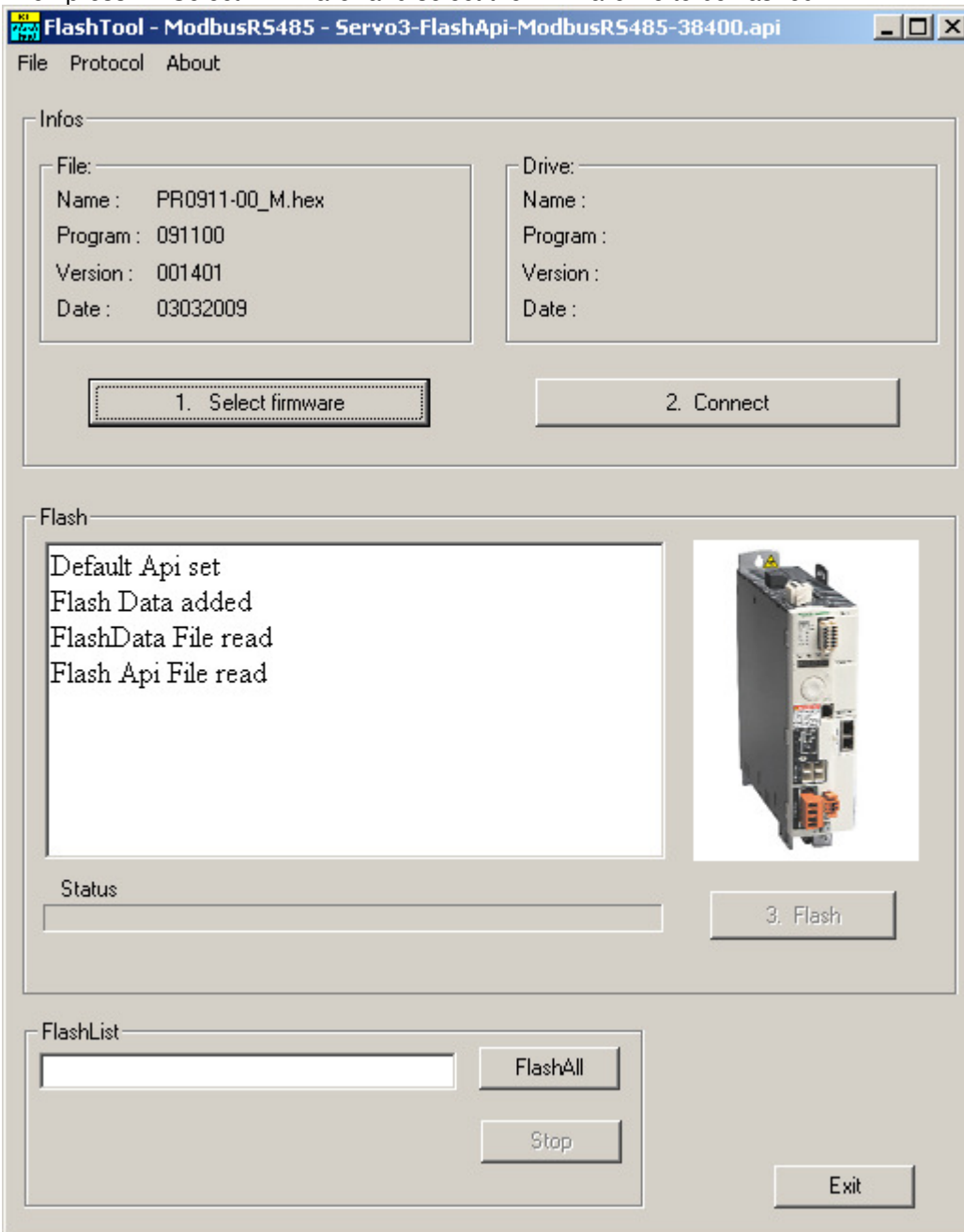


## 2 FLASHING

After starting the Flashtool, the communication protocol has to be selected, use ModbusRS485.



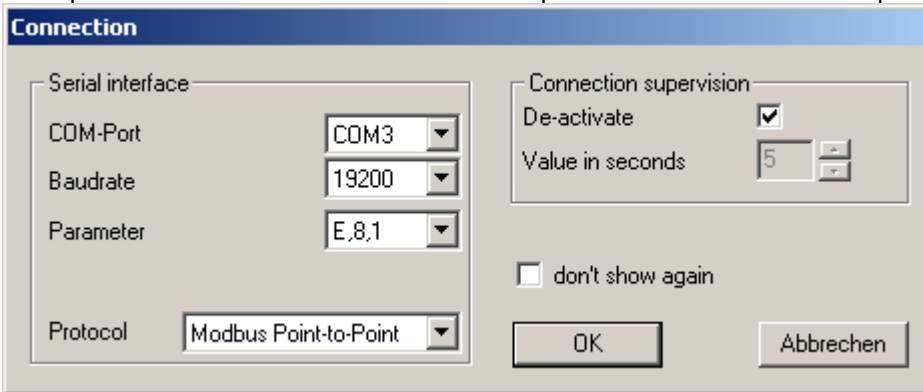
Then press "1. Select Firmware" and select the firmware file to be flashed



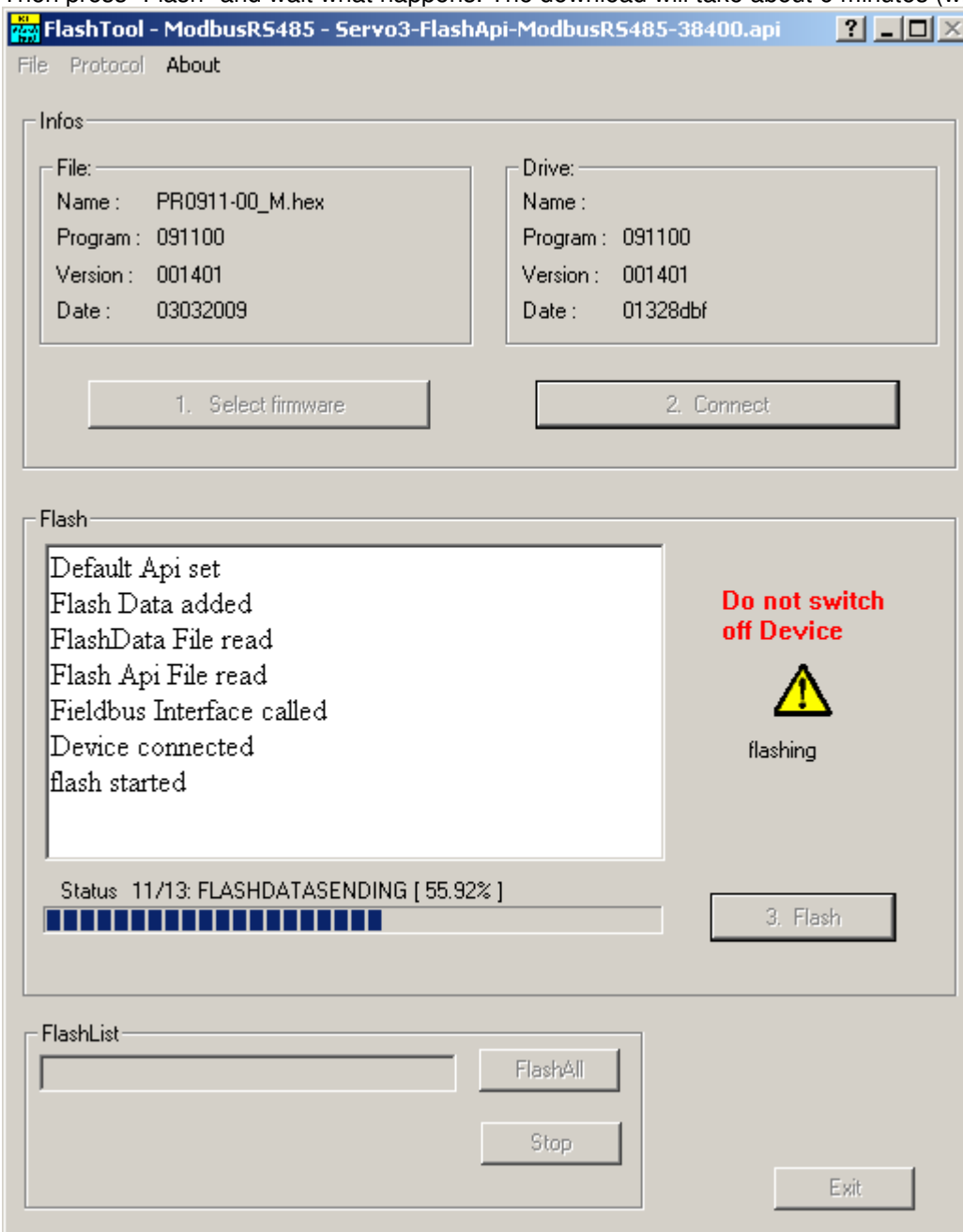
Info: The numbers for Program and Version are not displayed in without points.



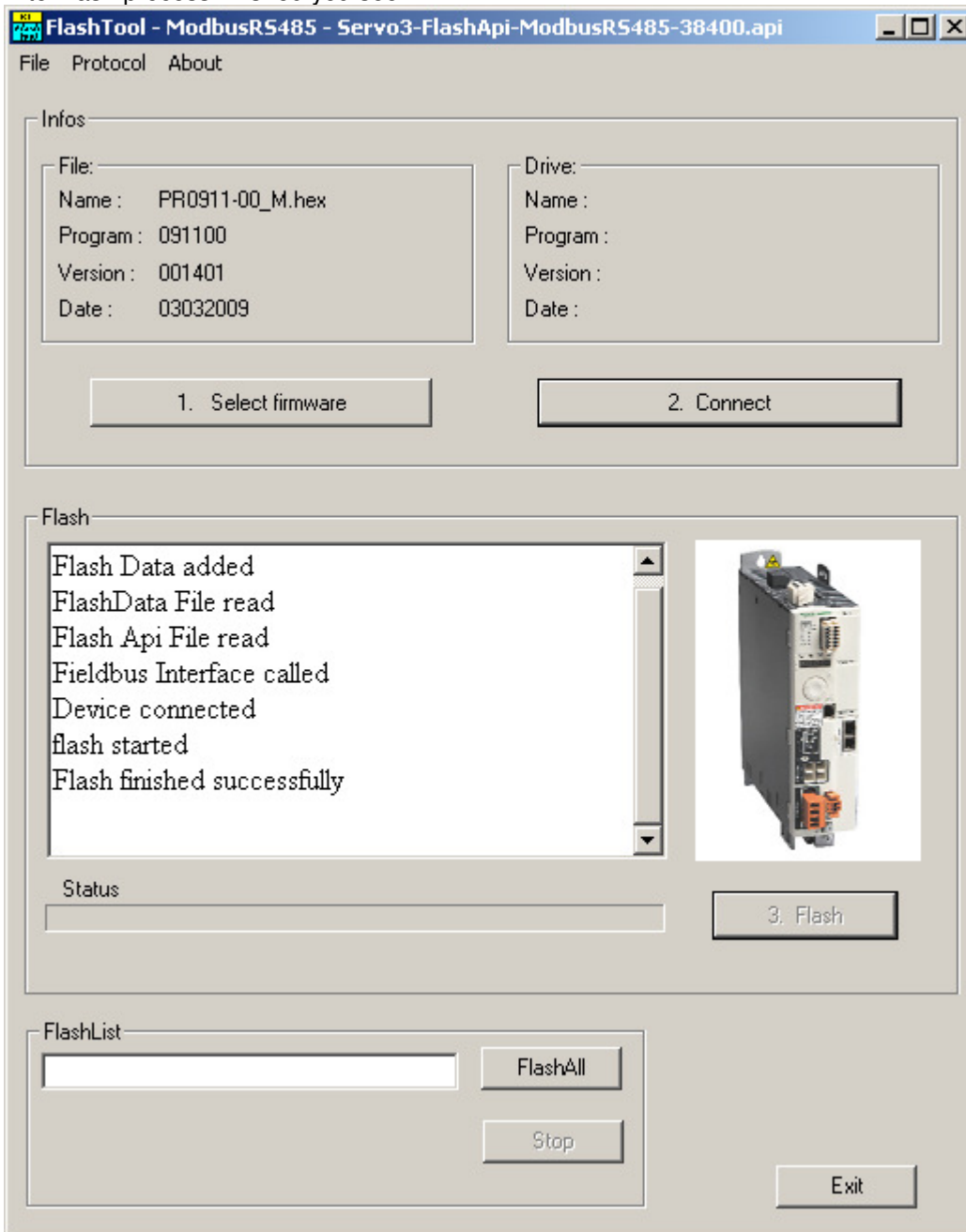
Then press "2. Connect" and select the COM port and the communication parameters as seen below.



Then press "Flash" and wait what happens. The download will take about 6 minutes (with 19200 Baud).



After flash process finished you see:



After the flash procedure is finished successfully the firmware is rebooted automatically.

### **3 KNOWN PROBLEMS**

On some PCs, there are sometimes communication problems with the Schneider RS232/RS485 converter. In this case Nudam converter or Universal cable is recommended.