

# EVlink release note for firmware version 3400-6

date: 2022\_02\_02

**Warning: This firmware release is only compatible with EVlink Smart Wallbox. We suggest to reboot the charging station before to launch the new firmware update.**

## 1) Document scope

This release note presents the new features and modifications added to the EVlink charging station.

This release for the EVlink firmware is a mandatory update to benefit from the full functionalities of EVlink Smart Wallbox range.

The firmware release package will consist of the charging station firmware and associated documentation.

## 2) Firmware and Hardware requirements

This firmware release applies to EVlink charging stations with 2 conditions detailed in next sections:

- Hardware compatibility
- Firmware compatibility

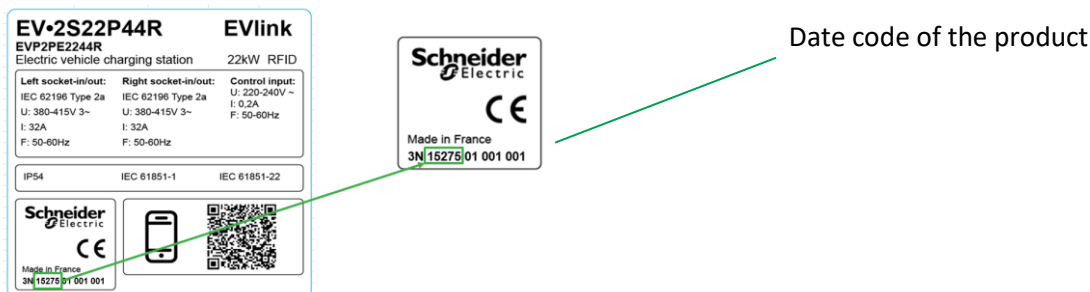
### 2.a Hardware Revision

This firmware release is compatible with charging stations:

- EVlink Smart Wallbox: EVB1

You can check the date code directly on the product or in the commissioning tool as shown below.

#### Directly on the product



**Schneider Electric Industries SAS**  
 35, rue Joseph Monier  
 CS 30323  
 F - 92506 Rueil Malmaison Cedex  
[www.se.com](http://www.se.com)

**Electrical equipment and systems must be installed, connected and used in compliance with prevailing standards and/or installation regulations.**

As standards, specifications and designs change from time to time, always ask for confirmation of the information given in this publication.

© Schneider Electric - All rights reserved.

GEX9564800

On the Commissioning tool (in the Maintenance Tab)

Maintenance Report

**Product Number**

Ping #104	
Commercial Ref	EVB1A22P4ERI
Factory Code	3N
Production Date	16043
Production Revision	00
Batch Number	002
Unique Identifier	001
Product Id	501B67D
Serial Number Part 1	3N155110441G2
Serial Number Part 2	S1B7551700014

In this example : Production Date is 16043

### 2.b Firmware compatibility

Due to the firmware signature, the update requires that the charging station has **3400-1, 3400-2, 3400-3 or 3400-4** firmware installed onboard. For charging station with firmware version before 3400-1, please consult the R8 run1 release note (3400-1).

**Note that the 3400-5 has not been released officially and it's only an internal release.**

Firmware version can be checked using the Commissioning tool in the Updates Tab.

See example below based on 3.4.0.0-1

The screenshot shows the EVlink interface with the Maintenance tab selected. Under the 'Firmware update' sub-tab, there is a section for 'Installed versions' with the following table:

@	Electronic board	Commissioning tool
1	3400-1	3400-1
2	3400-1	3400-1

Below this table is the 'Upgrade firmware' section, which includes a 'Select a package to install' label and a 'Choose File' button (currently showing 'No file chosen').

More details can be found in the below section “Firmware upgrade procedure”.

### 3) Firmware upgrade procedure (non OCPP)

Firmware upgrade is not possible on all types of Charging Stations (see “Hardware/firmware requirements” section above).

**Schneider Electric Industries SAS**  
 35, rue Joseph Monier  
 CS 30323  
 F - 92506 Rueil Malmaison Cedex  
[www.se.com](http://www.se.com)

**Electrical equipment and systems must be installed, connected and used in compliance with prevailing standards and/or installation regulations.**

As standards, specifications and designs change from time to time, always ask for confirmation of the information given in this publication.

© Schneider Electric - All rights reserved.

GEX9564800

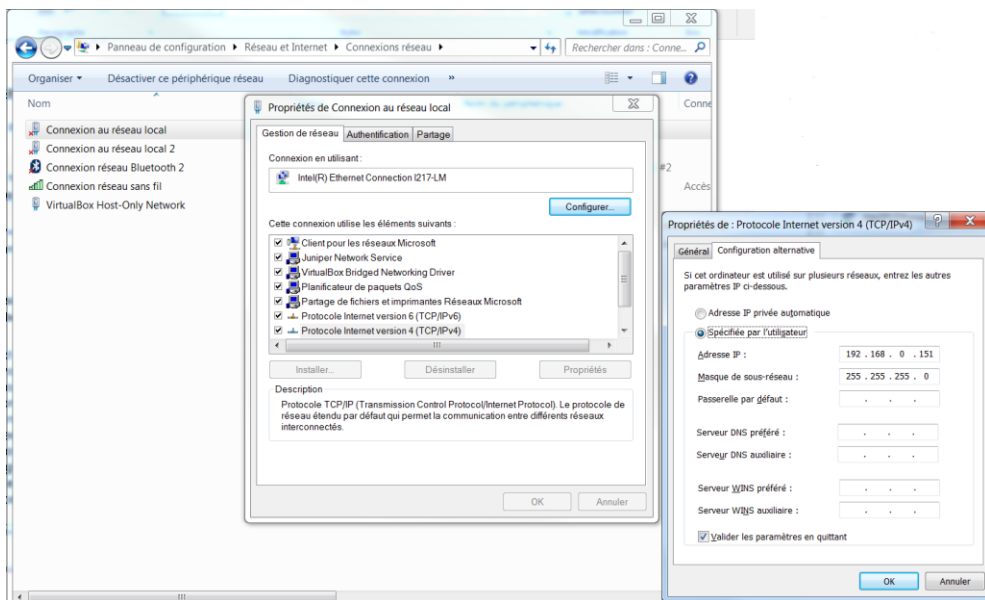
If your Charging Station has an older firmware version than 3.4.0.0-1 then please start with upgrading to 3.4.0.0-1

If your Charging Station is managed by an OCPP supervision, please jump to next section.

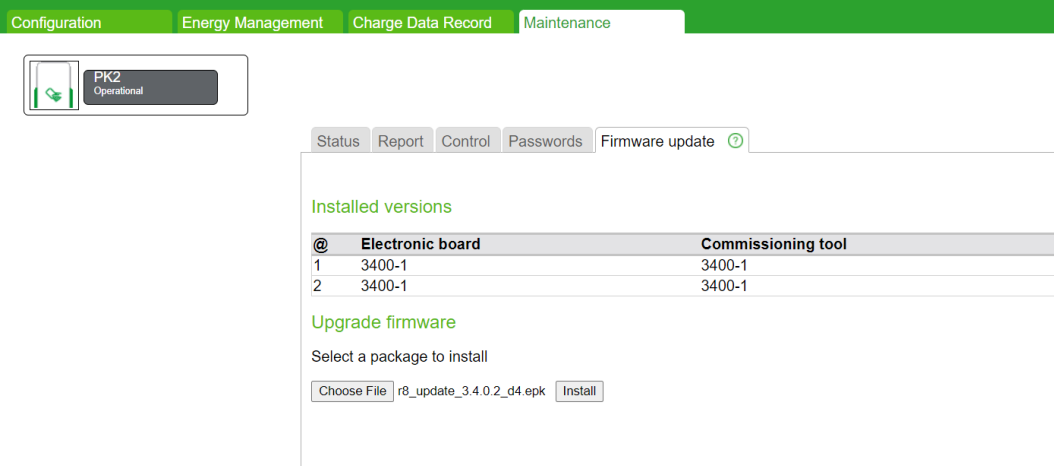
**Note:** in case of cluster with Energy Management features, please contact your Schneider Electric support.

**Follow the procedure below and the remarks:**

- 1) First connect to the Charging Station using an Ethernet cable (slot #1, on the left of the right electronic board), and check that your computer can communicate with the Charging Station. You may need to change your network adapter settings, as shown below.



- 2) The firmware version displayed in the “Maintenance” tab, “Firmware update” subtab shall be 3.4.0.0-1 otherwise a preliminary upgrade to 3.4.0.0-1 is required before proceeding with next steps.



Configuration Energy Management Charge Data Record Maintenance

PK2 Operational

Status Report Control Passwords Firmware update

Installed versions

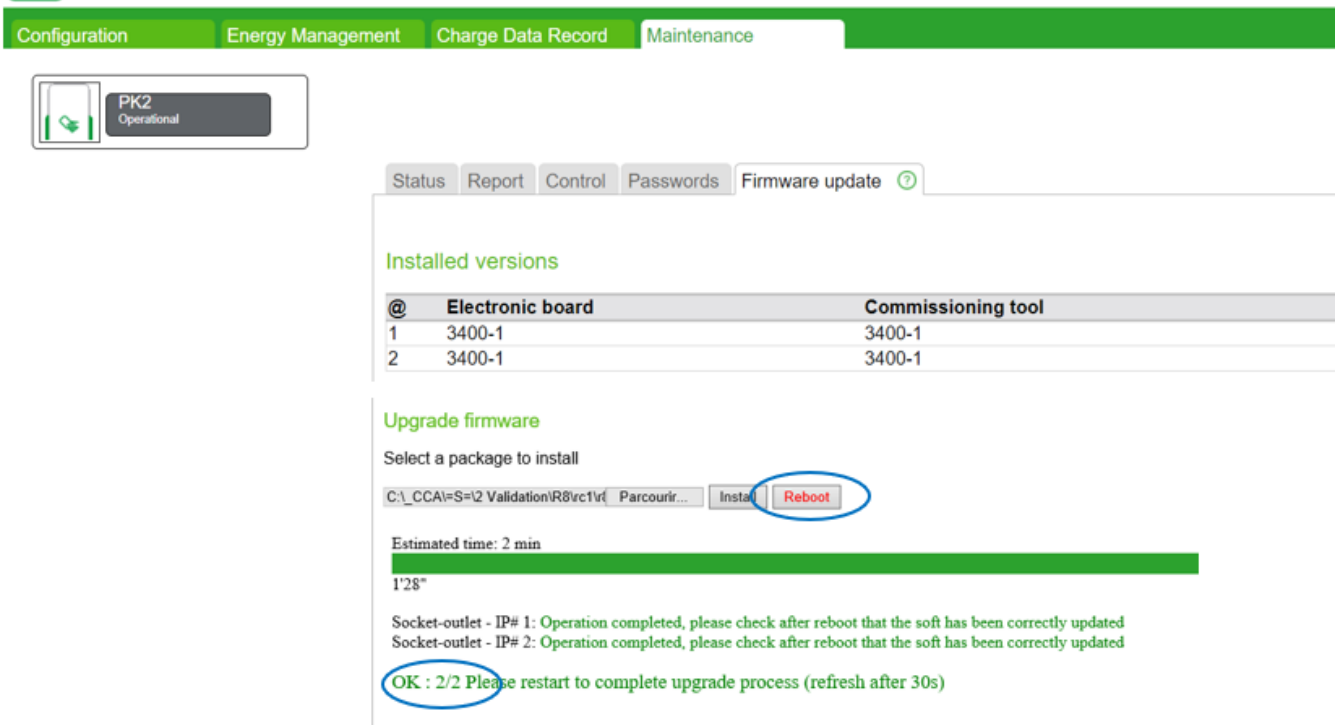
@	Electronic board	Commissioning tool
1	3400-1	3400-1
2	3400-1	3400-1

Upgrade firmware

Select a package to install

Choose File r8\_update\_3.4.0.2\_d4.epk Install

- 3) Click on “Browse” and select “r8\_update\_3.4.0.6\_d4.epk” and click “Install”.
- 4) Wait for progress bar to complete, and check that no error messages are displayed.
- 5) Reboot the Charging Station, by clicking on “Reboot” button.



Configuration Energy Management Charge Data Record Maintenance

PK2 Operational

Status Report Control Passwords Firmware update

Installed versions

@	Electronic board	Commissioning tool
1	3400-1	3400-1
2	3400-1	3400-1

Upgrade firmware

Select a package to install

C:\\_CCA\S=I2 Validation\R8\rc1\rc1\ Parcours... Install Reboot

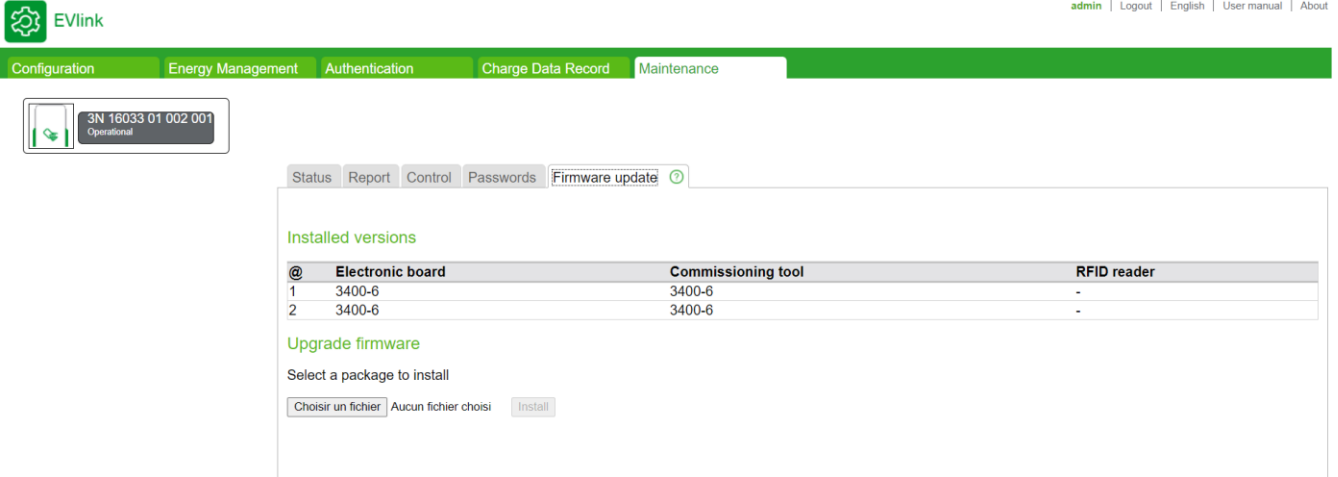
Estimated time: 2 min

1'28"

Socket-outlet - IP# 1: Operation completed, please check after reboot that the soft has been correctly updated  
 Socket-outlet - IP# 2: Operation completed, please check after reboot that the soft has been correctly updated

OK : 2/2 Please restart to complete upgrade process (refresh after 30s)

6) The station will reboot, and you will need to reload the page to check the new firmware version.

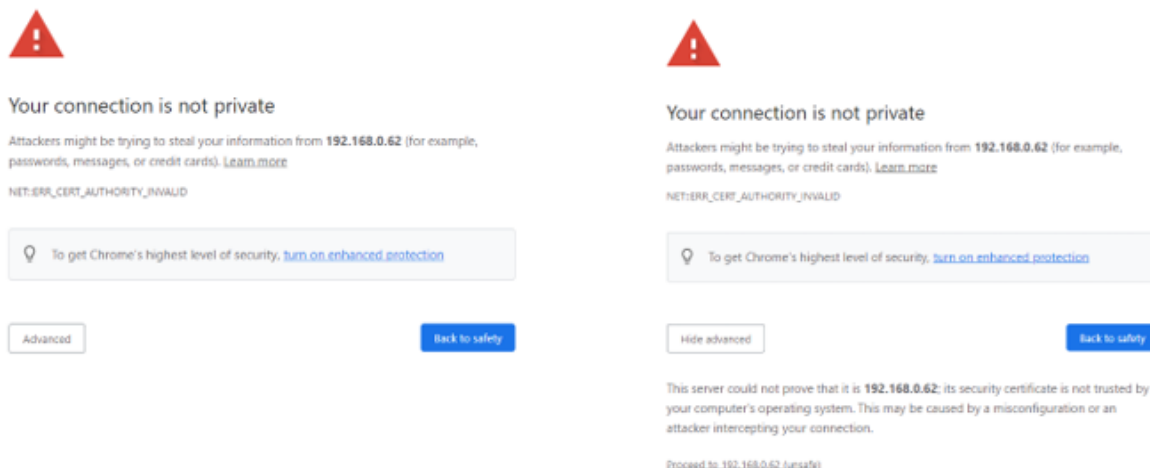


**Important remark:**

- Don't refresh the web page (F5 or refresh) during the process.
- Wait until the status light of the charging station turns off and then on again to be sure that the restart with the new firmware is successfully completed.
- **Don't power off the charging station during the process**

**NOTE:** With Smart Wallbox EVB fitted with a key lock, make sure that the station is unlocked, otherwise the status light remains off and it is not possible to check that the restart is completed.

To avoid refresh issues, it is recommended to close the web browser in use. According https connection, depending on the web browser a warning message may occur. Hereunder Chrome example: click on Advanced then Proceed to ...



Once connected, browse to “Maintenance”/” Firmware Update” tab and check that the Electric Board and the Commissioning Tool version for each socket outlet is 3.4.0.0-6

**It is strongly recommended to update the username password in “Maintenance”/” Passwords” tab.**

#### 4) Firmware upgrade procedure (OCP)

The firmware update to version 3.4.0.0-6 can be done from an OCPP supervision, provided the hardware is compatible (see “Hardware/firmware requirements” section above).

The update procedure lasts typically 10 minutes and requires a Charging Station reboot.

After reboot, please check that both connectors have the same firmware version, otherwise request another reboot.

**NOTE:** to connect to a supervision in **wss and https**, the charging station must be at the current date and time.

#### 5) Improvements or bug fix

**For Smart Wallbox:**

- Cybersecurity fixes and enhancements
- OCPP: Firmware update and get diagnostics limitations removed
- OCPP: Offline transactions data fixes and enhancements
- RFID deactivation from EVCE correction

#### 6) Functions removed

- None

**Schneider Electric Industries SAS**  
 35, rue Joseph Monier  
 CS 30323  
 F - 92506 Rueil Malmaison Cedex  
[www.se.com](http://www.se.com)

**Electrical equipment and systems must be installed, connected and used in compliance with prevailing standards and/or installation regulations.**

As standards, specifications and designs change from time to time, always ask for confirmation of the information given in this publication.

© Schneider Electric - All rights reserved.

GEX9564800

## 7) Known limitations and issues

- RFID Reader upgrade is not possible with firmware versions 3101 to 3300-09. Once you have updated the main firmware in 3300-10 or higher, you can also upgrade the RFID reader if you face compatibility issue with some badges. The 1400 firmware is included in this package as a separated file.
- Time settings through NTP failed

## 8) Other resources

- Availability of firmware packages
  - On se.com with [following link](#).  
(<https://www.se.com/ww/en/product-range/63506-evlink-smart-wallbox/?parent-subcategory-id=80408&filter=business-5-residential-and-small-business#software-and-firmware>)
- Users' manual: see DOCA0060EN-09 on [www.se.com](http://www.se.com)
- Troubleshooting guide: see DOCA0117EN-09 on [www.se.com](http://www.se.com)