

---

## EVlink release note for software version 3400-1

date: 2021\_07\_19

### 1) Document scope

This release note presents the new features and modifications added to the EVlink charging station.

This release for the EVlink software is a mandatory update to benefit from the full functionalities of EVlink Parking range or EVlink Smart Wallbox range and EVlink City range.

**If the charging stations are supervised by an EVlink Load Management System, do not directly update the charging stations. First proceed to the Load Management System software upgrade that support this release.**

The software release package will consist of the charging station software and associated documentation.

### 2) Software and Hardware requirements

This software release applies to EVlink charging stations with 2 conditions detailed in next sections:

- Hardware compatibility
- Software compatibility

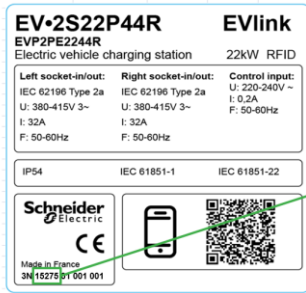
#### 2.a Hardware Revision

This software release is compatible with charging stations:

- EVlink Smart Wallbox: EVB
- EVlink Parking: EVF2, EVW2 and EVP2
- EVlink City with a datecode greater than 15401

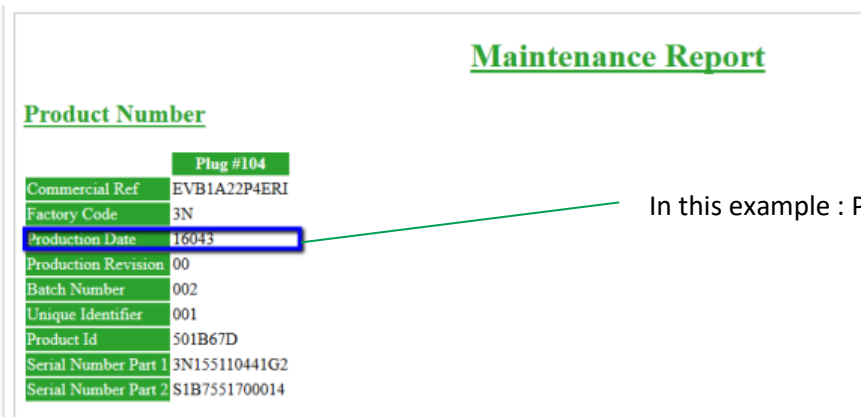
You can check the date code directly on the product or in the commissioning tool as shown below.

**Directly on the product**



Date code of the product

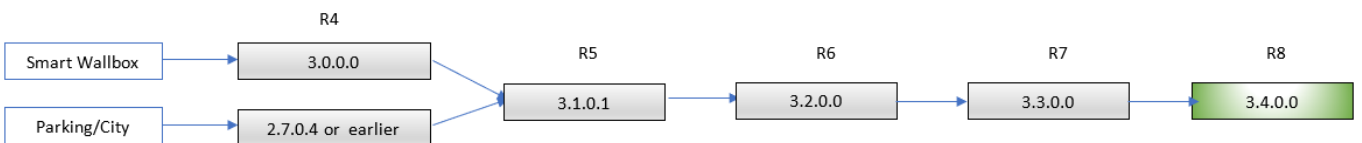
**On the Commissioning tool (in the Maintenance Tab)**



In this example : Production Date is 16043

**2.b Software compatibility**

The software update requires that the charging station has a recent software installed onboard. The version required 3.3.0.0 (aka R7).



Software version can be checked using the Commissioning tool in the Updates Tab.

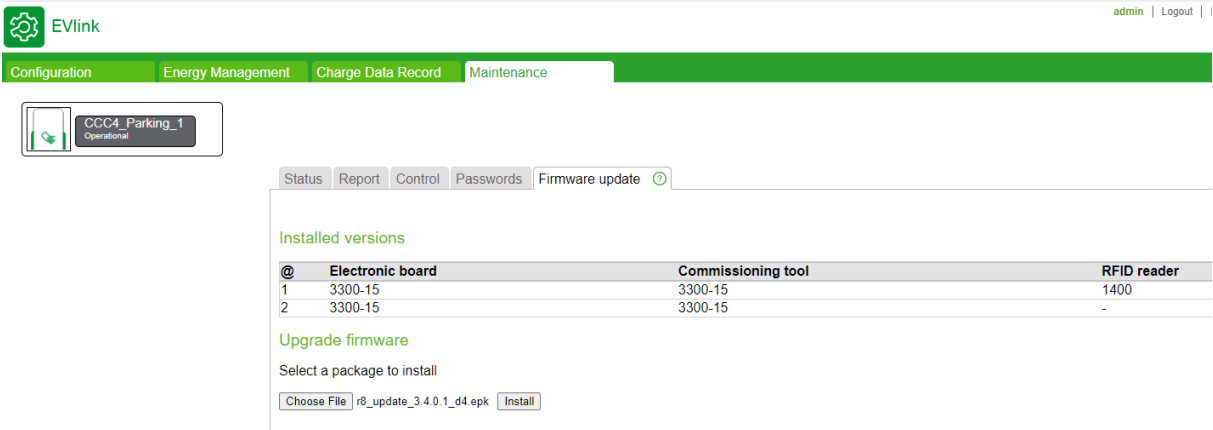
**Schneider Electric Industries SAS**  
 35, rue Joseph Monier  
 CS 30323  
 F - 92506 Rueil Malmaison Cedex  
[www.se.com](http://www.se.com)

**Electrical equipment and systems must be installed, connected and used in compliance with prevailing standards and/or installation regulations.**

As standards, specifications and designs change from time to time, always ask for confirmation of the information given in this publication.

© Schneider Electric - All rights reserved.

See example below based on 3300.15



More details can be found in the below section “ Software upgrade procedure”.

### 3) Software upgrade procedure (non OCPP)

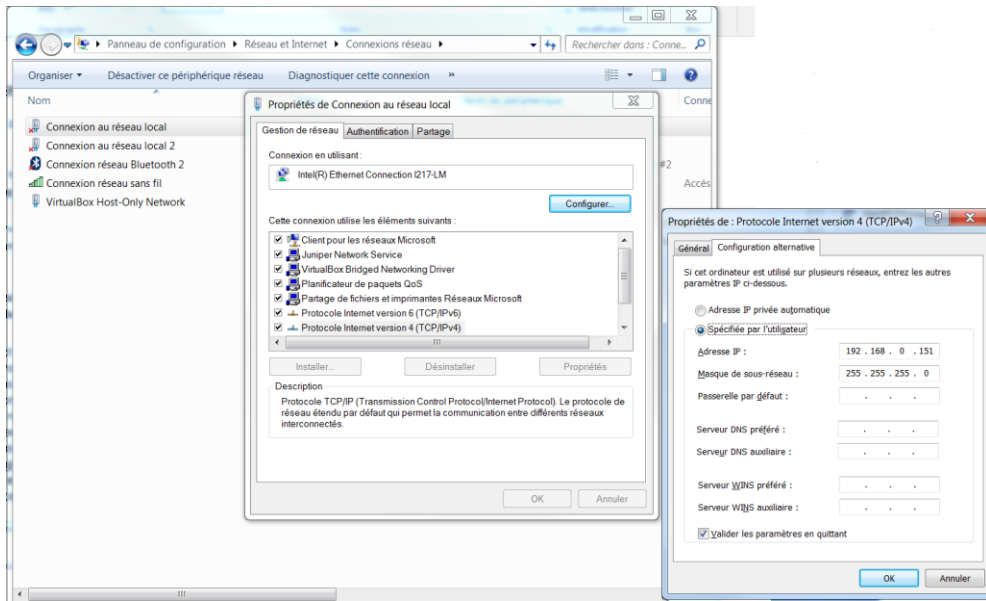
Software upgrade is not possible on all types of Charging Stations (see “Hardware/software requirements” section above).

If your Charging Station has an older software version than 3.3.0.0, then please start with upgrading to 3.3.0.0. If your Charging Station is managed by an OCPP supervision, please jump to next section.

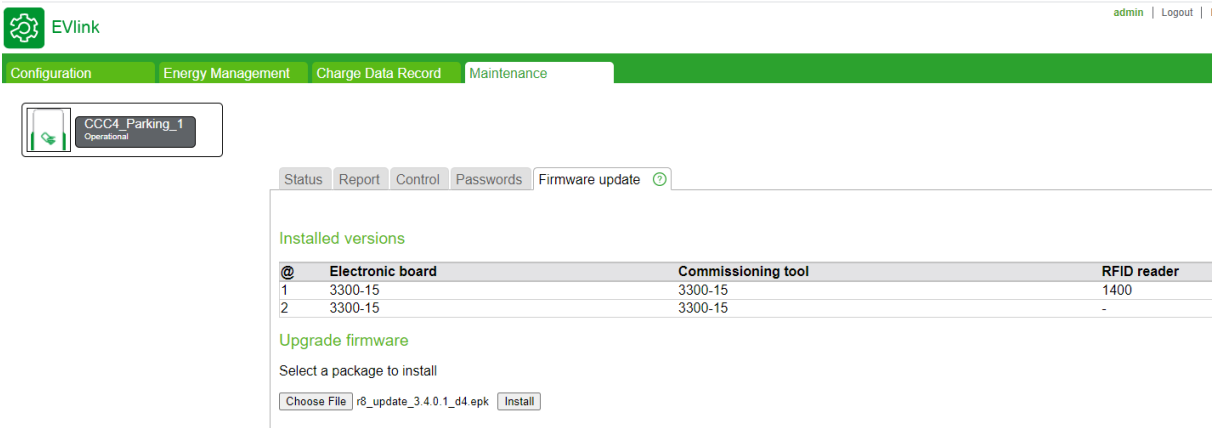
**Note:** in case of cluster with Energy Management features, please contact your Schneider Electric support.

**Follow the procedure below and the remarks:**

- 1) First connect to the Charging Station using an Ethernet cable (slot #1, on the left), and check that your computer can communicate with the Charging Station. You may need to change your network adapter settings, as shown below.



- 2) The firmware version displayed in the “Maintenance” tab, “Firmware update” subtab shall be at least 3.3.0.0, otherwise a preliminary upgrade to 3.3.0.0 is required before proceeding with next steps.



- 3) Click on “Browse” and select “r8\_update\_3.8.0.1\_d4.epk”, and click “Install”.
- 4) Wait for progress bar to complete, and check that no error messages are displayed.
- 5) Reboot the Charging Station, by clicking on “Reboot” button.



Configuration Energy Management Charge Data Record Maintenance



Status Report Control Passwords Firmware update ?

Installed versions

@	Electronic board	Commissioning tool
1	3300-15	3300-15
2	3300-15	3300-15

Upgrade firmware

Select a package to install

C:\\_CCA=S=12 Validation\R8\rc1r\ Parcourir... **Install** **Reboot**

Estimated time: 2 min



Socket-outlet - IP# 1: Operation completed, please check after reboot that the soft has been correctly updated  
 Socket-outlet - IP# 2: Operation completed, please check after reboot that the soft has been correctly updated

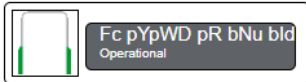
**OK : 2/2 Please restart to complete upgrade process (refresh after 30s)**

6)

The station will reboot, and you will need to reload the page to check the new firmware version.



Configuration Energy Management Charge Data Record Maintenance



Status Report Control Passwords Firmware update ?

Installed versions

@	Electronic board	Commissioning tool
1	3400-1	3400-1
2	3400-1	3400-1

Upgrade firmware

Select a package to install

Choose File No file chosen Install

**Schneider Electric Industries SAS**  
 35, rue Joseph Monier  
 CS 30323  
 F - 92506 Rueil Malmaison Cedex  
[www.se.com](http://www.se.com)

**Electrical equipment and systems must be installed, connected and used in compliance with prevailing standards and/or installation regulations.**

As standards, specifications and designs change from time to time, always ask for confirmation of the information given in this publication.

© Schneider Electric - All rights reserved.

JYT5807900

**Important remark:**

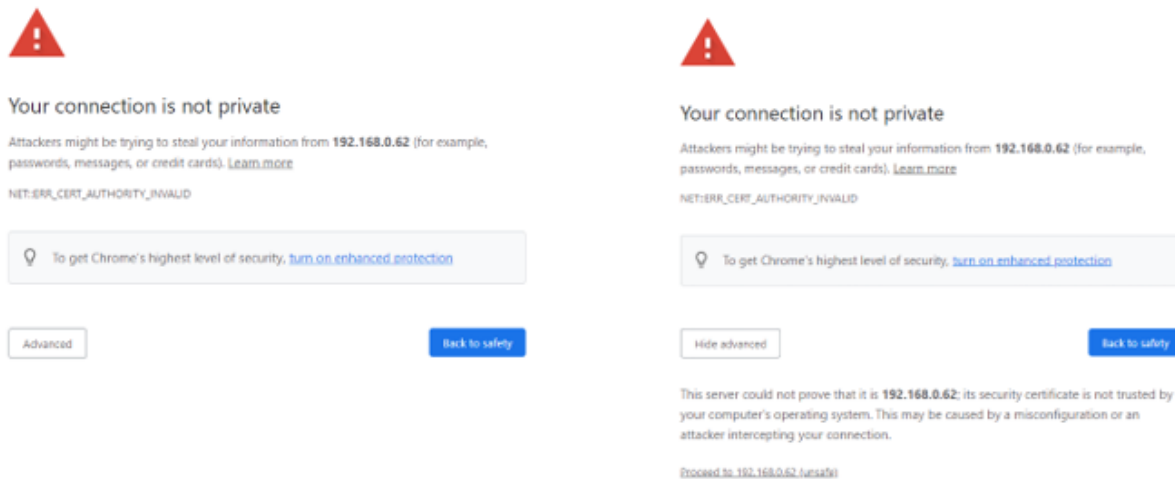
- Don't refresh the web page (F5 or refresh) during the process.
- Wait until the status light of the charging station turns off and then on again to be sure that the restart with the new software is successfully completed.
- **Don't power off the charging station during the process**

**NOTE:** With Smart Wallbox EVB fitted with a key lock, make sure that the station is unlocked, otherwise the status light remains off and it is not possible to check that the restart is completed.

After the reboot, the connection to the web server must be done through https, e.g. if the charging stations IP address was <http://192.168.0.62> before the update, the new IP address will be <https://192.168.0.62>

To avoid refresh issues, it is recommended to close the web browser in use.

According https connection, depending on the web browser a warning message may occur. Hereunder Chrome example: click on Advanced then Proceed to ...



Once connected, browse to "Maintenance"/"Firmware Update" tab and check that the Electric Board and the Commissioning Tool version for each socket outlet is 3.4.0.0.

**It is strongly recommended to update the username password in "Maintenance"/"Passwords" tab.**

**4) Software upgrade procedure (OCPP)**

The software update to version 3.4.0.0 can be done from an OCPP supervision, provided the hardware is compatible (see "Hardware/software requirements" section above).

The update procedure lasts typically 10 minutes and requires a Charging Station reboot.

After reboot please check that both connectors have the same software version, otherwise request another reboot.

**Schneider Electric Industries SAS**  
 35, rue Joseph Monier  
 CS 30323  
 F - 92506 Rueil Malmaison Cedex  
[www.se.com](http://www.se.com)

**Electrical equipment and systems must be installed, connected and used in compliance with prevailing standards and/or installation regulations.**

As standards, specifications and designs change from time to time, always ask for confirmation of the information given in this publication.

© Schneider Electric - All rights reserved.

JYT5807900

## 5) Improvements or bug fix

For Smart Wallbox – Parking - City:

- Cybersecurity fixes and enhancements.
- Connection to web server through https.
- User password policy improvement.

## 6) Functions removed

- None

## 7) Known limitations and issues

- RFID Reader upgrade is not possible with software versions 3101 to 3300-09. Once you have updated the main firmware in 3300-10 or higher, you can also upgrade the RFID reader if you face compatibility issue with some badges. The 1400 software is included in this package as a separated file.

## 8) Other resources

- Availability of SW packages
  - On se.com with [following link](https://www.se.com/ww/en/download/range/60850-EVlink%20Parking/?docTypeGroup=3541958-Software%2FFirmware&language=en_GB-English).  
([https://www.se.com/ww/en/download/range/60850-EVlink%20Parking/?docTypeGroup=3541958-Software%2FFirmware&language=en\\_GB-English](https://www.se.com/ww/en/download/range/60850-EVlink%20Parking/?docTypeGroup=3541958-Software%2FFirmware&language=en_GB-English))
- Users' manual: see DOCA0060EN-09 on [www.se.com](http://www.se.com)
- Troubleshooting guide: see DOCA0117EN-09 on [www.se.com](http://www.se.com)