
EVlink release note for RFID Reader firmware version V1530

date:

2024_03_22

1) Document scope

This release note presents the new features and modifications added to the EVlink RFID Reader OSITRACK station.



2) Firmware and Hardware requirements

This firmware release applies to EVlink charging stations with 2 conditions detailed in next sections:

- Hardware compatibility
- Firmware compatibility

2.a Hardware Revision

This firmware release is compatible with charging stations:

- EVlink Smart Wallbox,
- EVlink Parking,
- EVlink City **with OSITRACK Reader**

2.b Firmware compatibility

RFID Reader upgrade is not possible with charging station firmware versions from 3101 to 3300-09.

Once you have updated the Charging Station firmware in 3300-10 or higher, you can also upgrade the RFID reader if you face compatibility issue with some badges.

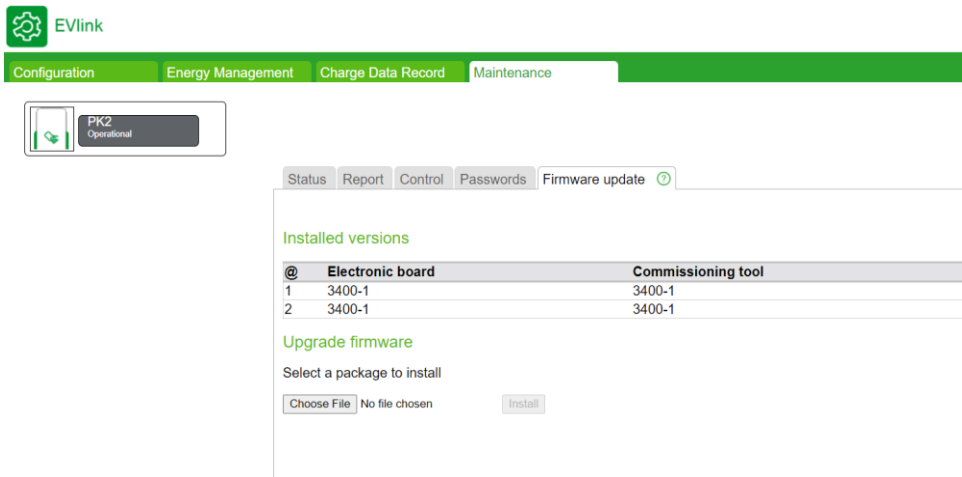
The 1530 firmware is included in this package as a separated file.

Firmware version can be checked using the Commissioning tool in the Updates Tab.

Schneider Electric Industries SAS Electrical equipment and systems must be installed, connected and used in compliance with prevailing standards and/or installation regulations.

F - 92506 Rueil Malmaison Cedex As standards, specifications and designs change from time to time, always www.se.com ask for confirmation of the information given in this publication.

© Schneider Electric - All rights reserved.
BQT4233300



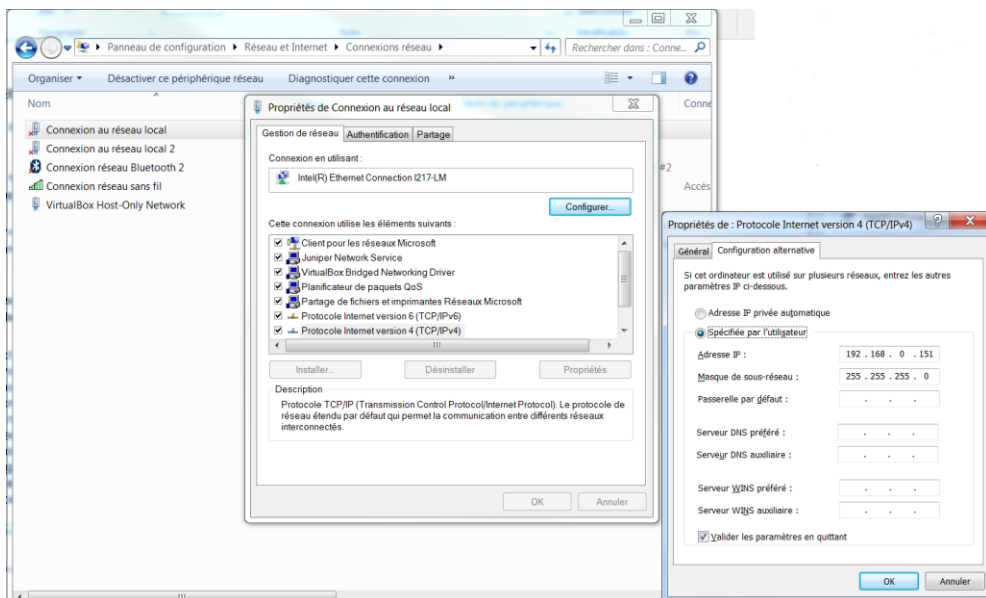
More details can be found in the below section “Firmware upgrade procedure”.

3) Firmware upgrade procedure (non OCPP)

Firmware upgrade is not possible on all types of Charging Stations (see “Hardware/firmware requirements” section above).

Follow the procedure below and the remarks:

- 1) First connect to the Charging Station using an Ethernet cable (slot #1, on the left of the right electronic board), and check that your computer can communicate with the Charging Station. You may need to change your network adapter settings, as shown below.

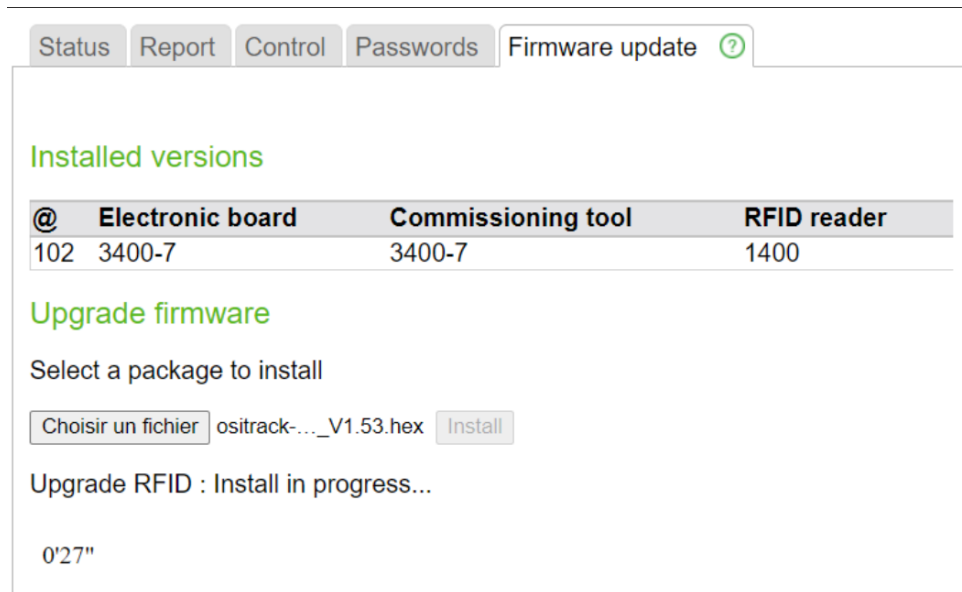


Schneider Electric Industries SAS Electrical equipment and systems must be installed, connected and used in compliance with prevailing standards and/or installation regulations.

F - 92506 Rueil Malmaison Cedex As standards, specifications and designs change from time to time, always ask for confirmation of the information given in this publication.

© Schneider Electric - All rights reserved.
BQT4233300

2) The firmware version displayed in the “Maintenance” tab, “Firmware update”.



The screenshot shows a web interface with a navigation bar containing 'Status', 'Report', 'Control', 'Passwords', and 'Firmware update'. Below the navigation bar, there is a section titled 'Installed versions' containing a table:

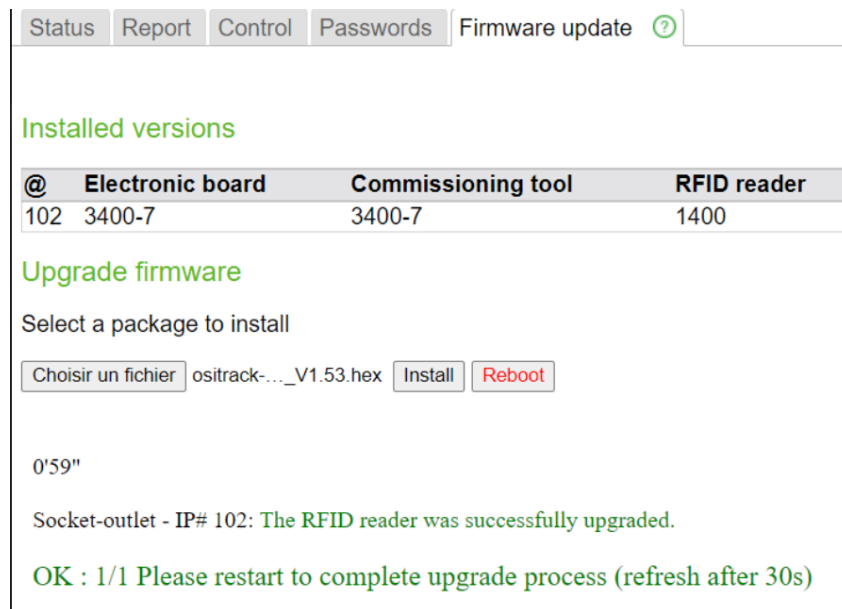
@	Electronic board	Commissioning tool	RFID reader
102	3400-7	3400-7	1400

Below the table is a section titled 'Upgrade firmware' with the text 'Select a package to install'. It features a file selection button 'Choisir un fichier', a text input field containing 'ositrack-..._V1.53.hex', and an 'Install' button. Below this, it says 'Upgrade RFID : Install in progress...' and shows a progress bar at '0'27''.

3) Click on “Choose File” and select “V1.53” and click “Install”.

4) Wait for progress bar to complete, and check that no error messages are displayed.

5) Reboot the Charging Station, by clicking on “Reboot” button.



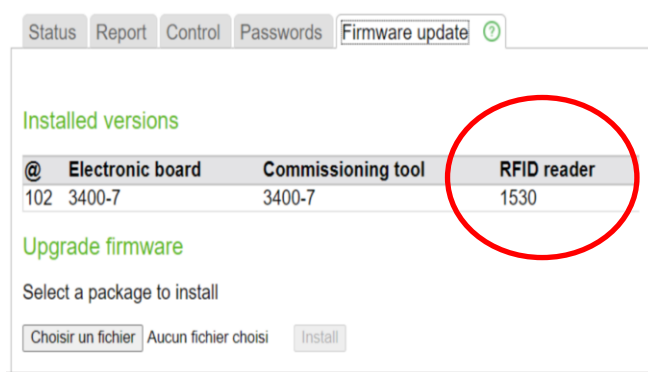
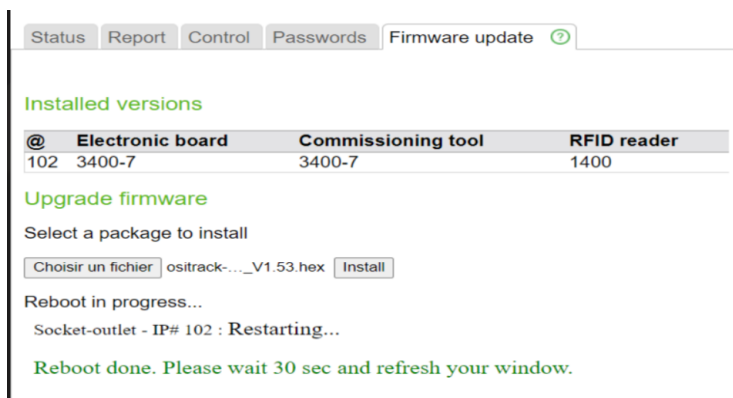
The screenshot shows the same web interface as before, but the progress bar is now at '0'59'' and the text below it reads 'Socket-outlet - IP# 102: The RFID reader was successfully upgraded.' Below this, there is a green message: 'OK : 1/1 Please restart to complete upgrade process (refresh after 30s)'. The 'Install' button is now disabled, and a new 'Reboot' button has appeared.

6) The station will reboot, and you will need to reload the page to check the new firmware version.

Schneider Electric Industries SAS Electrical equipment and systems must be installed, connected and used in compliance with prevailing standards and/or installation regulations.

F - 92506 Rueil Malmaison Cedex As standards, specifications and designs change from time to time, always www.se.com ask for confirmation of the information given in this publication.

© Schneider Electric - All rights reserved.
BQT4233300



Important remark:

- Don't refresh the web page (F5 or refresh) during the process.
- Wait until the status light of the charging station turns off and then on again to be sure that the restart with the new firmware is successfully completed.
- **Don't power off the charging station during the process**

NOTE: With Smart Wallbox EVB fitted with a key lock, make sure that the station is unlocked, otherwise the status light remains off and it is not possible to check that the restart is completed.

To avoid refresh issues, it is recommended to close the web browser in use.

4) Firmware upgrade procedure (OCPP)

The RFID Reader firmware update is not recommended through OCPP supervision.

The RFID Reader firmware update should succeed but the installation status is not correctly displayed (Failed status can occur even the FW RFID Reader installation has succeed)

The update procedure lasts typically 2 minutes and requires a Charging Station reboot.

Schneider Electric Industries SAS Electrical equipment and systems must be installed, connected and used in compliance with prevailing standards and/or installation regulations.

F - 92506 Rueil Malmaison Cedex As standards, specifications and designs change from time to time, always www.se.com ask for confirmation of the information given in this publication.

© Schneider Electric - All rights reserved.
BQT4233300

5) Status before update (v1400: Firmware of the reader)

- ISO14443-3 (TypeA and TypeB)
- ISO15693

6) Improvements

- ISO14443-4 (TypeA ONLY)

7) Functions removed

- None

8) Known limitations

- Detection range is limited when RFID CARD with half antenna. In this situation, we recommend to contact your badge provider to replace the RFID CARD by a full antenna version.

9) Other resources

- Availability of firmware packages
 - On se.com with [following link](https://www.se.com/ww/en/product-range/63506-evlink-smart-wallbox/?parent-subcategory-id=80408&filter=business-5-residential-and-small-business#software-and-firmware). (<https://www.se.com/ww/en/product-range/63506-evlink-smart-wallbox/?parent-subcategory-id=80408&filter=business-5-residential-and-small-business#software-and-firmware>)
- Users' manual: see DOCA0060EN-09 on www.se.com (<https://www.se.com/ww/en/download/document/DOCA0060EN/>)
- Troubleshooting guide: see DOCA0117EN-09 on www.se.com (<https://www.se.com/ww/en/download/document/DOCA0117EN/>)

Schneider Electric Industries SAS Electrical equipment and systems must be installed, connected and used in compliance with prevailing standards and/or installation regulations.

F - 92506 Rueil Malmaison Cedex As standards, specifications and designs change from time to time, always www.se.com ask for confirmation of the information given in this publication.

© Schneider Electric - All rights reserved.
BQT4233300