

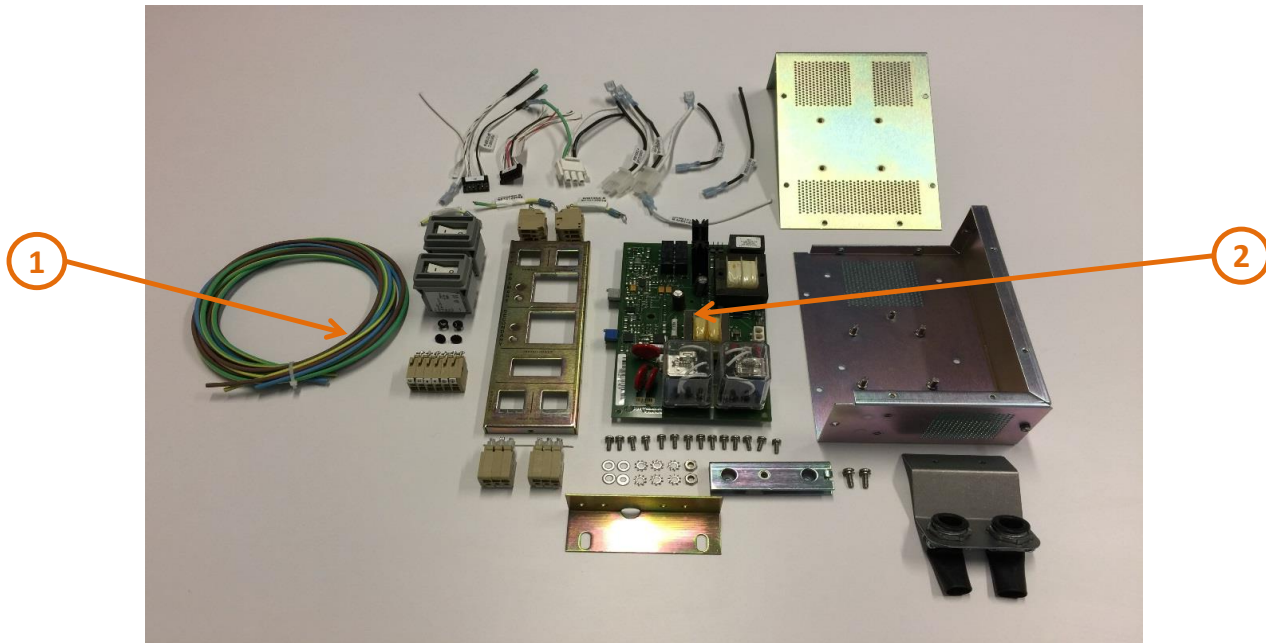
Product End of Life Instructions

KIT, AC Transfer Switch 120 V

KIT, AC Transfer Switches



End of Life Instructions



Recommendation	Number on drawing	Component / Material	Weight (in g)	Comment
To be depolluted	1	Cable (high current)	162.25	
To be depolluted	2	Electronic Board (Communication) > 10cm ²	557.16	

Product description

Manufacturer identification	Schneider Electric Industries SAS
Brand name	Foxboro DCS
Product function	The AC Transfer Switch provides the capability for two separate and independent sources of AC input power to feed 50 Series equipment. It supports continuous operation of 50 Series devices by automatically switching over to a secondary mains in the event of a failure or voltage drop on the primary mains.
Product reference	RH970WU
Additional similar product references	RH970WU RH912YH RH912YG RH970WV RH970WW
Total representative product mass	2350 g
Representative product dimensions	234.8mm(H) x 70mm(W) x 171.8mm(D)
Date of information release	04/2019



Additional information

Legal information

This product family is in the scope of European Union directive 2012/19/EU on Waste Electrical and Electronic Equipment (WEEE). The product family must be disposed according to the legislation of the country. This document is intended for use by end of life recyclers or treatment facilities. It provides the basic information to assure an appropriate end of life treatment for the components and materials of the product.

Recyclability potential

65%

Based on "ECO'DEEE recyclability and recoverability calculation method" (version V1, 20 Sep. 2008 presented to the French Agency for Environment and Energy Management: ADEME).

Schneider Electric Industries SAS

www.schneider-electric.com/contact

Country Customer Care Center:

<http://www2.schneider-electric.com/sites/corporate/en/support/operations/local-operations/local-operations.page>

+001 508 549 3992

38 Neponset Avenue

Foxboro

MA 02035

USA

www.schneider-electric.com

Published by Schneider Electric

ENVEOLI1902007EN_V1

© 2019 - Schneider Electric – All rights reserved

04/2019