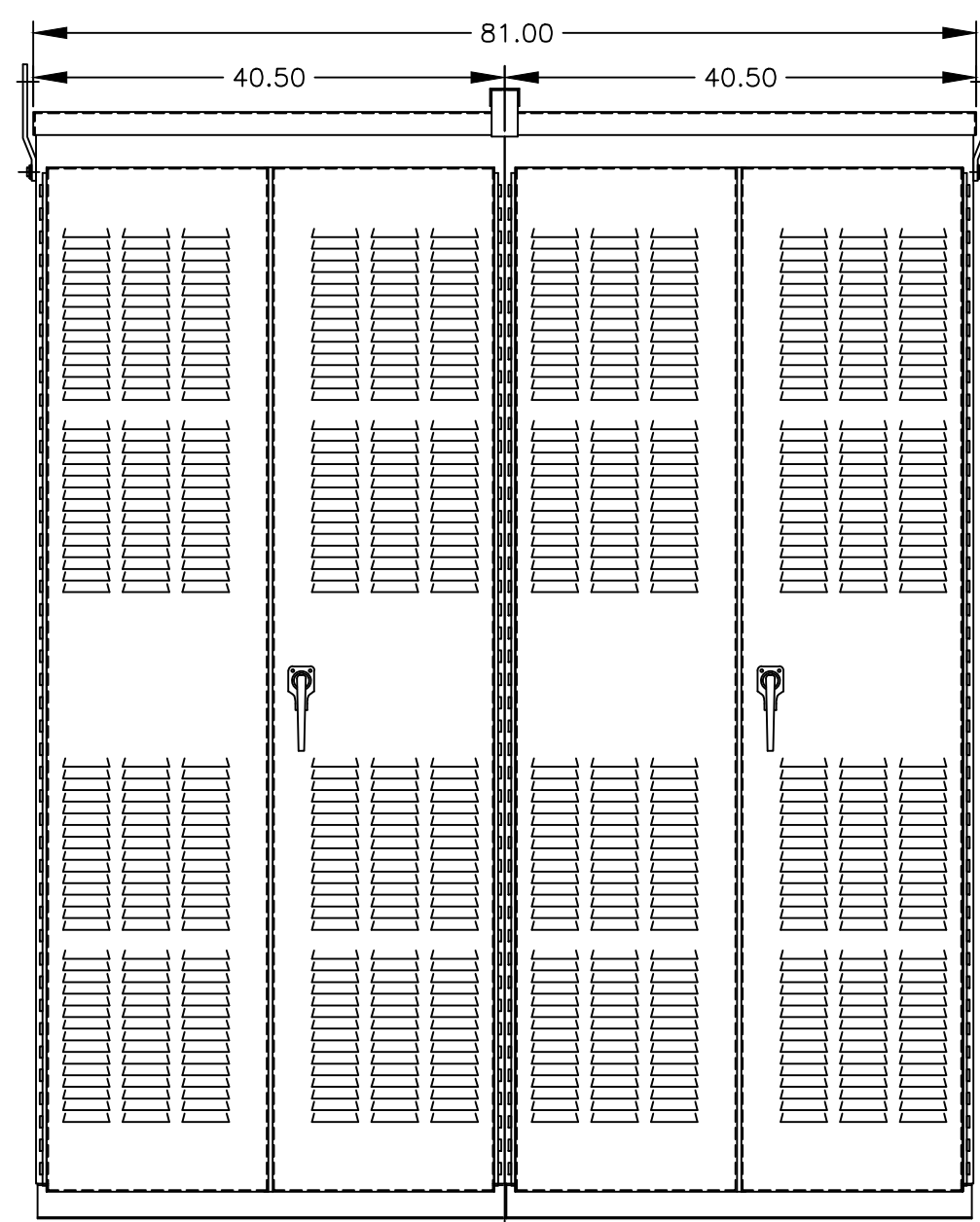
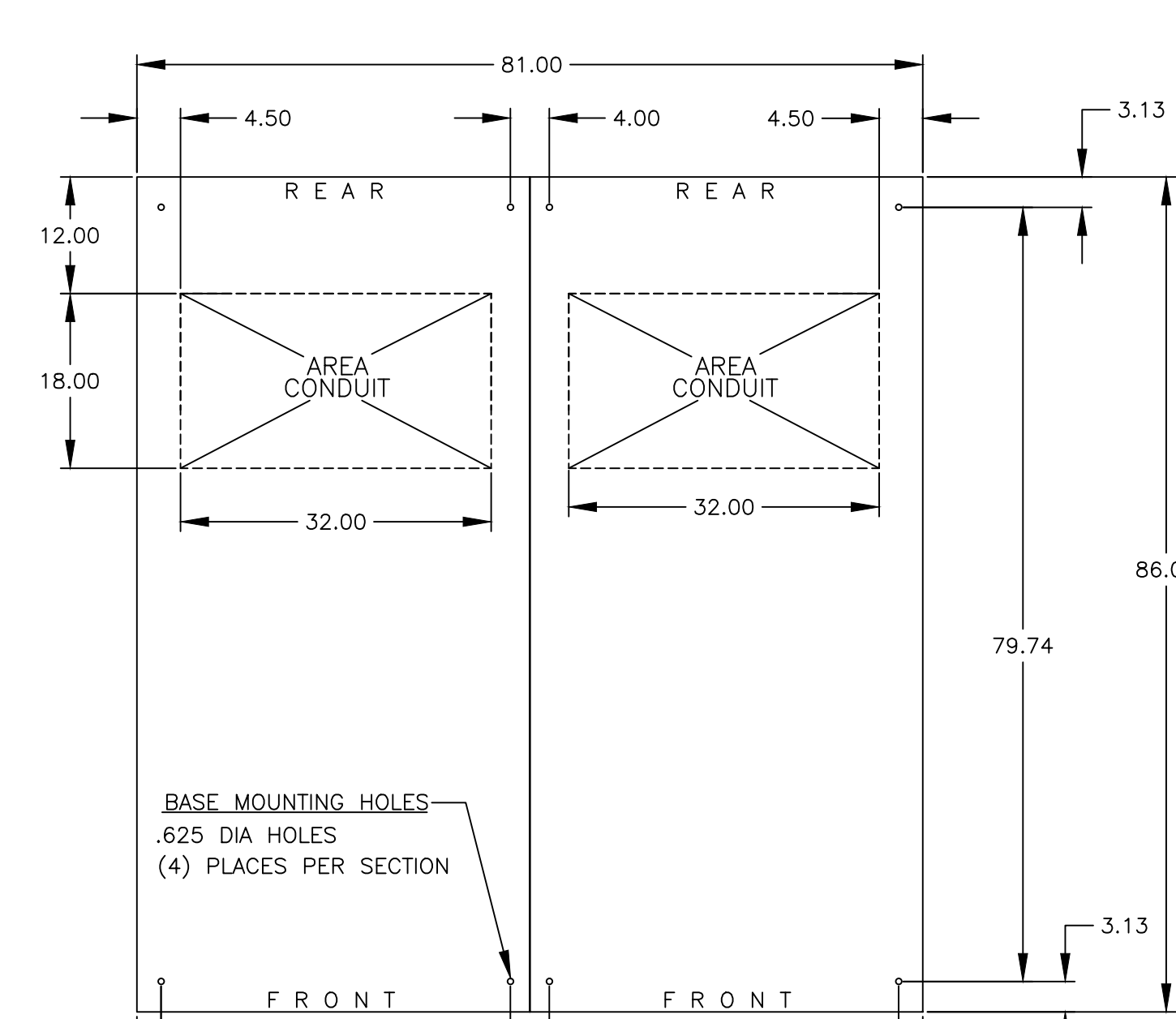


LEFT SIDE VIEW



FRONT & REAR EXTERIOR VIEW



PLAN VIEW

GENERAL NOTES

- TYPE 3R ENCLOSURE. FREE STANDING. FLOOR MOUNTED. CODE GAUGE FORMED FRAME CONSTRUCTION.
- N.E.C. STD. GAUGE PAN TYPE DOORS AND REMOVABLE COVERS. ALL DOORS SUPPLIED WITH LOCKABLE HANDLES, COMMON KEYING, AND CAPTIVE SCREWS AS REQUIRED.
- PADLOCKING PROVISIONS ARE INCLUDED: ISOLATION CRANK: THE TRANSFER SWITCH ISOLATION CRANK MAY BE PADLOCKED WITH THE TRANSFER SWITCH IN THE FULLY ISOLATED (DISCONNECTED) POSITION.
- FINISH: TYPE 3R: ANSI 61 GRAY POLYESTER SEMI GLOSS ELECTROSTATIC POWDER. TYPE 3RX: EXTERIOR CONSTRUCTED OF CODE GAUGE TYPE 304 STAINLESS STEEL.
- RECOMMENDED CLEARANCES: FRONT: 48 INCHES; REAR: 36 INCHES
- ALL BUS IS SILVER-PLATED COPPER, BASED ON 800A PER SQ. IN. DENSITY.
- A FULL RATED NEUTRAL CONNECTION FOR EACH SOURCE AND THE LOAD IS OPTIONAL. WHEN PROVIDED IT IS IN ONE OF THE FOLLOWING FORMATS AS SPECIFIED BY THE CATALOG NO. NEUTRAL TYPE;
 - SOLID (COPPER BUS) NEUTRAL
 - SWITCHED NEUTRAL POLE
 - OVERLAPPING NEUTRAL POLE (NOT AVAILABLE ON 7ADUB UNITS)
- DESIGNED FOR FRONT AND REAR ACCESS. DOORS SUPPLIED IN REAR.
- AIR VENTS PER MANUFACTURER'S STANDARDS.
- EXTERIOR VENTS ARE SUPPLIED WITH POLYESTER DUST FILTERS.
- FOR SPECIFIED TRANSFER SWITCH, REFER TO OPERATOR'S MANUAL PROVIDED WITH UNIT.
- ⊕ DENOTES SPLIT. UNIT SHIP AS TWO (2) SECTIONS.
- LIFTING PLATES: SECTIONS ARE SUPPLIED WITH LIFTING PLATES. INSPECT PLATES FOR DAMAGE AND TORQUE BOLTS TO 45 FT LBS BEFORE USE. REFER TO ANSI/NEMA PB 2.1 FOR PROPER HANDLING OF EQUIPMENT. AFTER INSTALLATION OF SECTION, REMOVE LIFTING PLATES. REINSTALL BOLTS INTO EXTERIOR HOLES AND TORQUE TO APROX. 20 FT LBS.

SPECIFICATIONS

- SERVICE VOLTAGE: SYSTEM RATING: 2500 AMPS, 3000 AMPS, 3 ϕ , 4W. GROUND BUS- 600 AMPS UL SHORT CIRCUIT RATING- 100,000 AIC RMS SYM @ 480V (LOWEST RATED DEVICE)
- NEUTRAL BUS: 3000 AMPS
- APPLICABLE LABELS: U.L. 891- SUITABLE ONLY FOR USE AS SERVICE EQUIPMENT.

CABLING NOTES

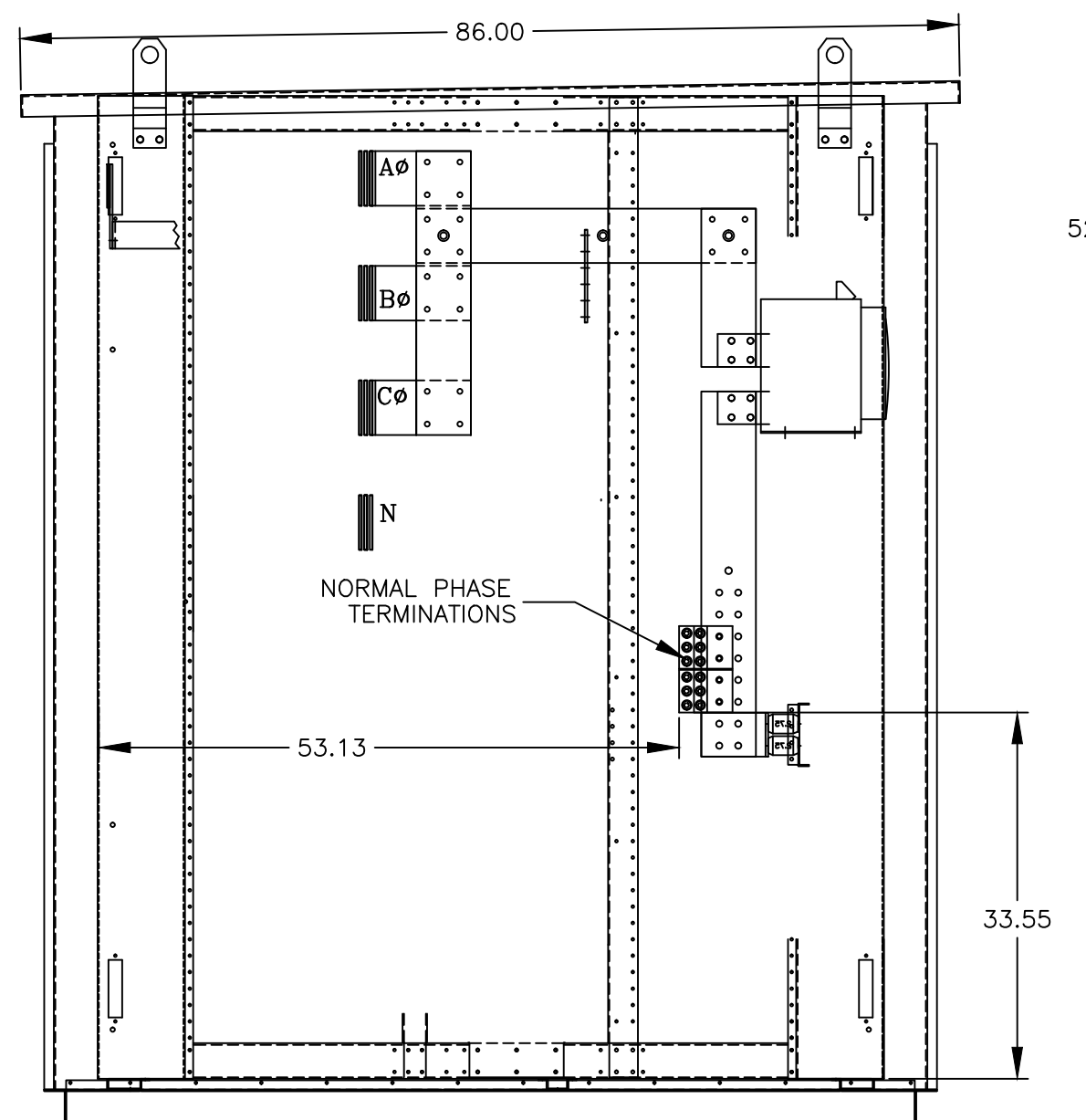
- ALL SIZES SUPPLIED STANDARD WITH MECHANICAL (SCREW TYPE) LUGS.
 - LUG MATERIAL: ALUMINUM ALLOY 6061-T6 WITH ELECTRO TIN PLATED FINISH.
 - SCREW MATERIAL: ALUMINUM ALLOY 6262-T9 WITH ELECTRO TIN PLATED FINISH.
 - UL LISTED, CSA CERTIFIED.
 - LUG SCREW TIGHTENING TORQUE PER UL 486B: 19 FT-LBS.
 - SUITABLE WIRE BENDING SPACE IS PROVIDED.
- OPTIONAL COPPER CRIMP LUGS MAY BE SUPPLIED.
 - LUG MATERIAL: HIGH CONDUCTIVITY WROUGHT COPPER FINISH, ELECTRO TIN PLATED.
 - UL LISTED, CSA CERTIFIED.
 - C LUG MOUNTING HARDWARE TIGHTENING TORQUE: (REFER TO WITHSTAND CURRENT RATING LABEL PROVIDED ON EACH TRANSFER SWITCH).
 - SUITABLE WIRE BENDING SPACE IS PROVIDED.
- CONSULT FACTORY FOR OTHER TERMINATION REQUIREMENTS.

NOTES 2500-3000 AMPS

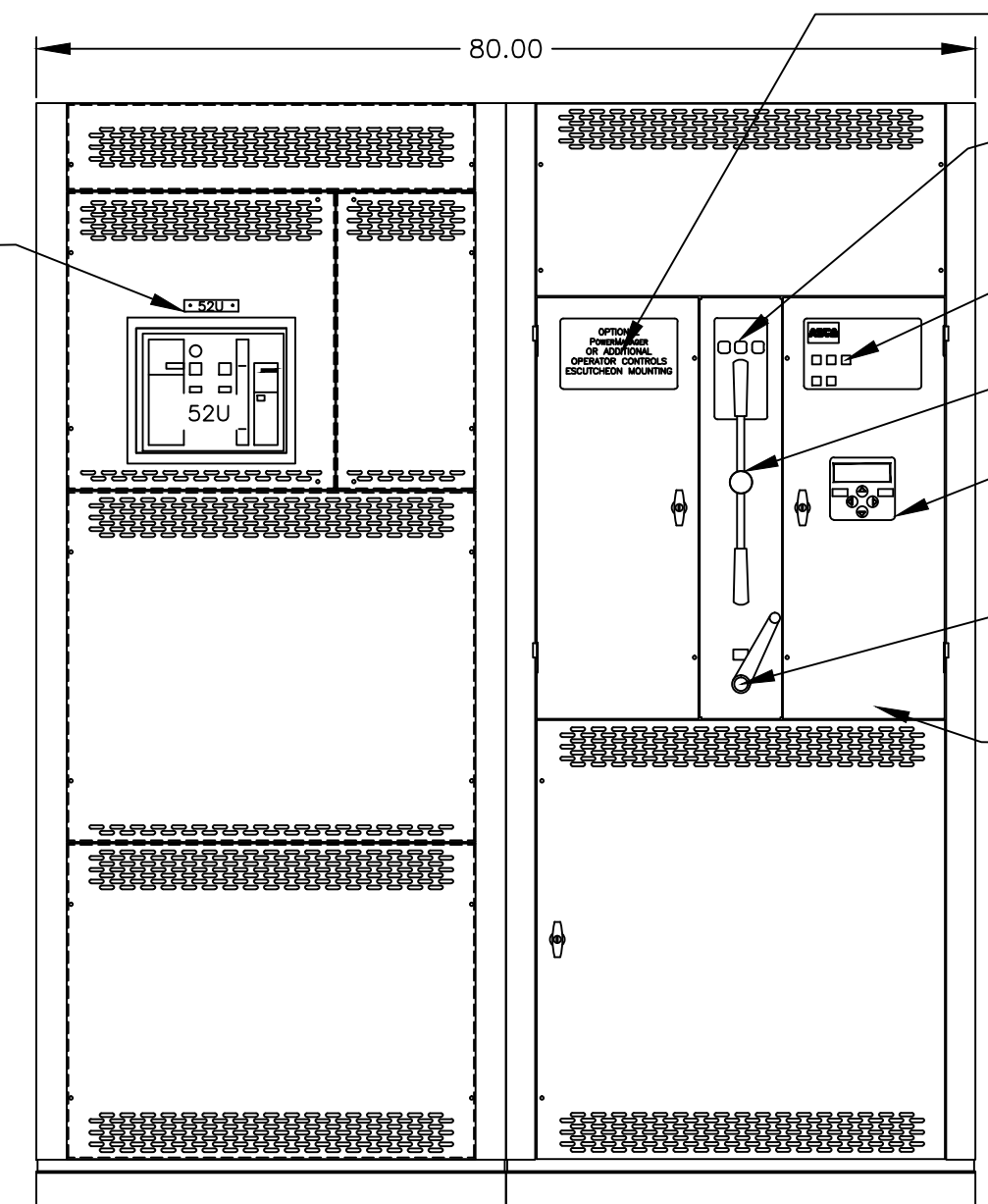
- SUPPLIED WITH STANDARD MECHANICAL (SCREW TYPE) LUGS ON THE NORMAL, EMERGENCY & LOAD BUS STABS. LUGS SUITABLE FOR CONNECTION OF TEN (10) #2 AWG-600MCM CU/AL CABLE (SEE NOTE "A" BELOW) PER PHASE AND NEUTRAL.
 - SUITABLE WIRE BENDING SPACE IS PROVIDED AS PER NEC.
- OPTIONAL COPPER CRIMP LUGS MAY BE SUPPLIED. (REFER TO CRIMP LUG INSTALLATION DATA PROVIDED WITH UNIT FOR FULL INSTALLATION DETAILS).
 - SUITABLE WIRE BENDING SPACE IS PROVIDED PER THE NEC.
- GROUND LUGS ARE PROVIDED STANDARD AS FOLLOWS; (36) 1/0 - 750MCM CU/AL CABLE

CIRCUIT BREAKER: ITEM 52U

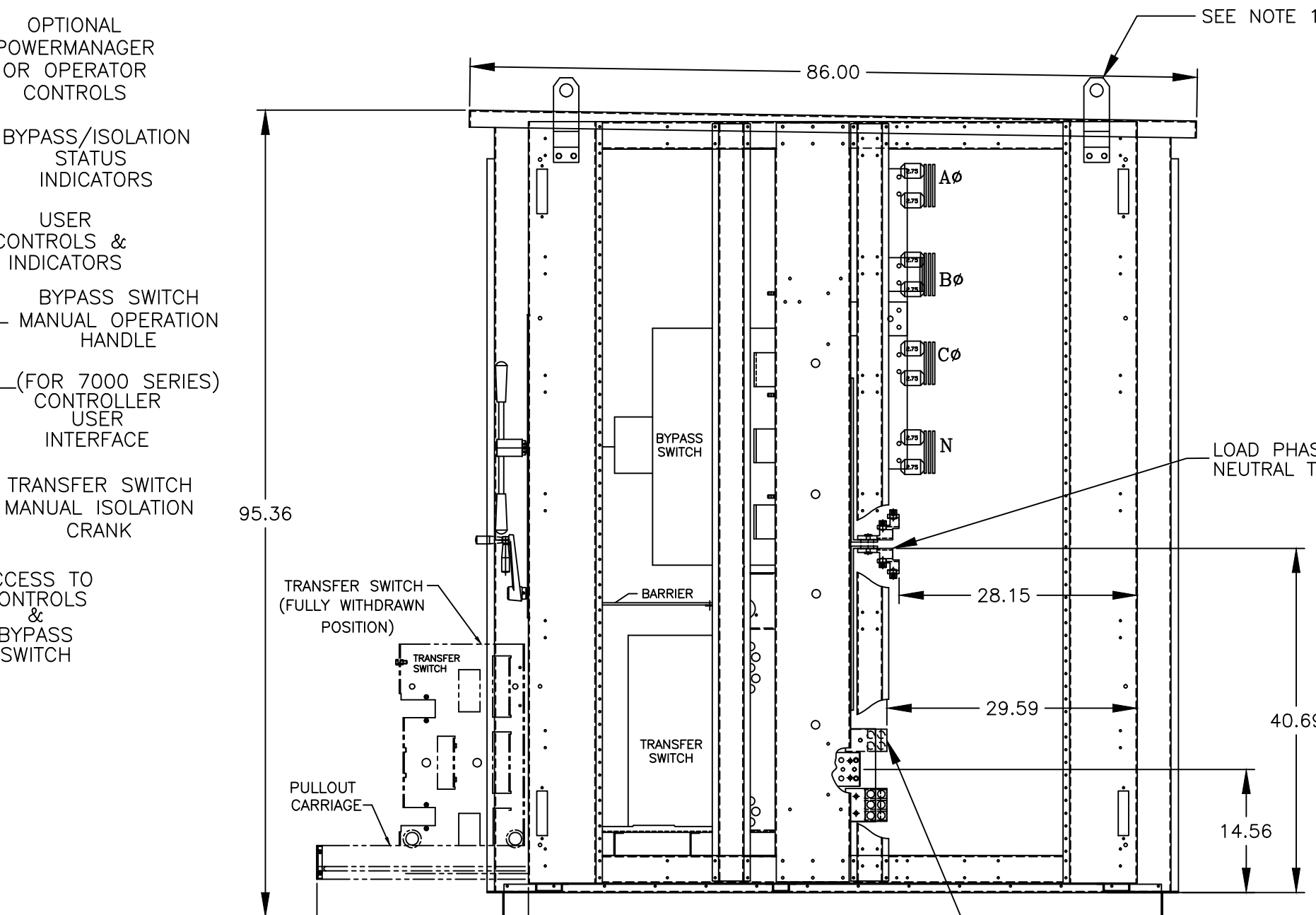
SQUARE "D" 100% RATED TYPE 'NW', 3000AF/3000AT OR 2500AF/2500AT STATIONARY MOUNTED, MANUALLY OPERATED, WITH LONG DELAY, SHORT DELAY, INSTANTANEOUS AND GROUND FAULT TRIP SETTINGS, 100,000 AIC RMS SYM. @ 480V.



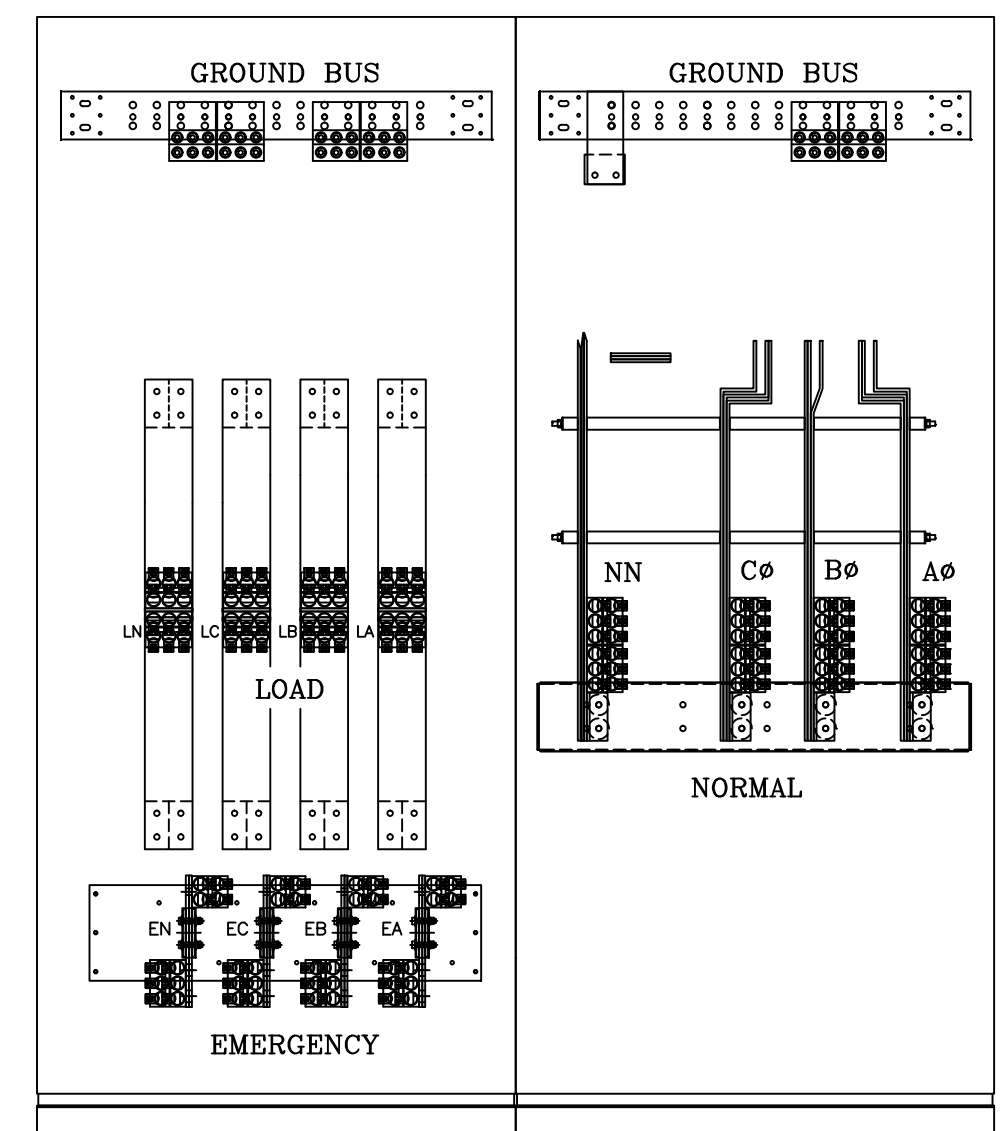
LEFT SIDE VIEW WITHOUT COVERS SECTION-1



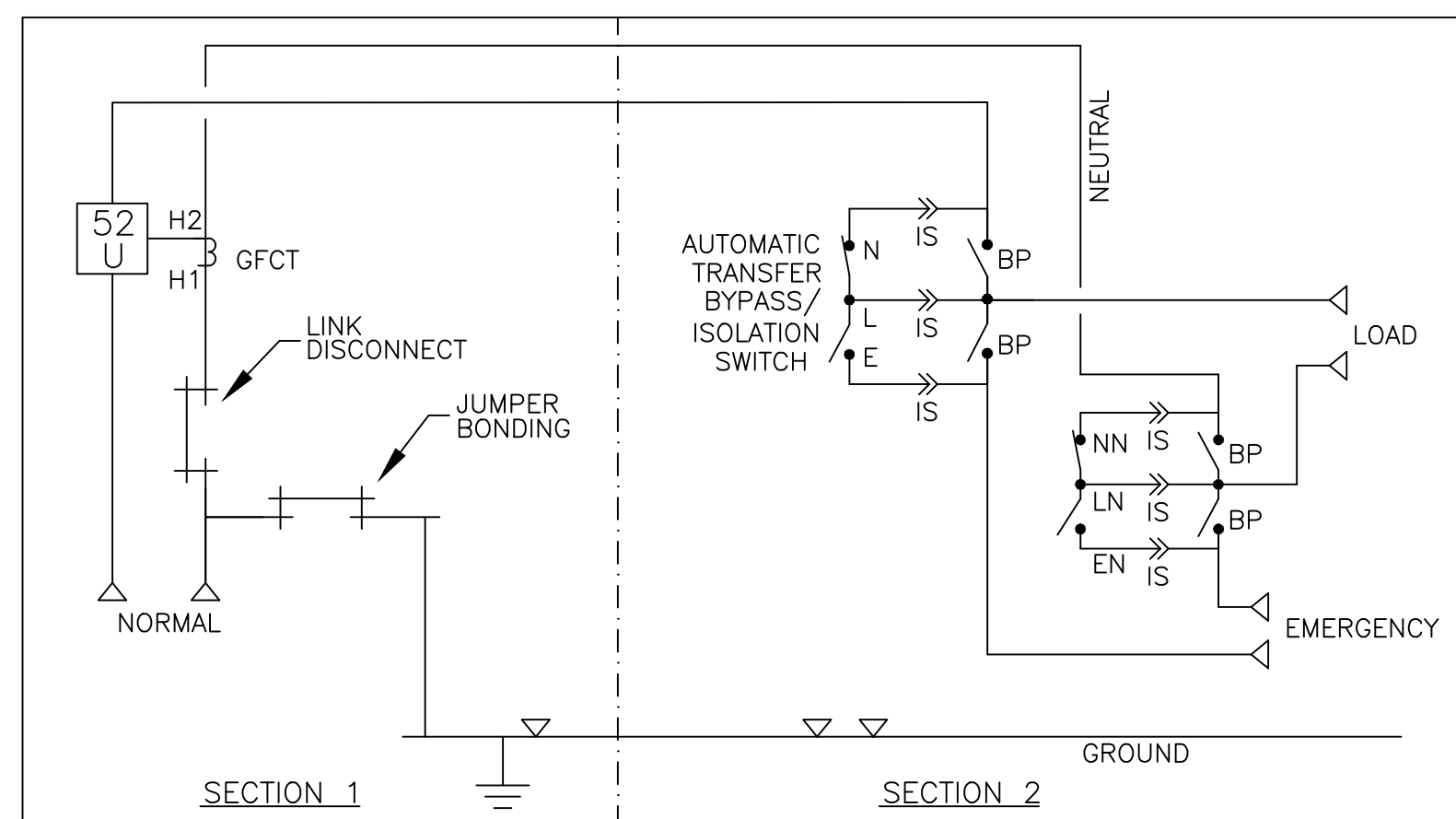
SECTION-1 SECTION-2 FRONT VIEW WITHOUT EXTERIOR DOORS



RIGHT SIDE VIEW WITHOUT COVERS SECTION-2



REAR VIEW(SECTION-2) REAR VIEW(SECTION-1)



ONE LINE DIAGRAM (WITH SWITCHED/OVERLAPPING NEUTRAL)

M	253518	BG	RN	03/09/15
	239184	DP	DP	10/2/12
L	236194	RBR	RN	03/13/12
	231838	LK	RN	05/03/11
K	228236	SV	RN	07/15/10
J				
I				
H				

PROJECT NAME: SERVICE ENTRANCE 2500A-3000A, TYPE 3R ENCLOSURE		REV. TO SHEET	ECN NO.	BY	APP.	DATE
OUTLINE		MOUNTING				
GAUB 2500A-3000A, SERVICE ENTRANCE BREAKER ON NORMAL						
TYPE 3R/3RX 96 X 81 X 86						
BY	DATE	MANUFACTURING TOLERANCES TO BE IN ACCORDANCE WITH ASCO PROCEDURE MP-1-003. FOR PLASTIC PARTS SEE MP-1-005				
DRAWN BY	DJB	03/05/04	ASSM. REF. NO.	COMPUTER GENERATED DRAWING		
CHECKED	BK	03/05/04	SCALE 1/16" = 1" SIZE	DS		
PROJECT APPROVAL	WK	03/05/04	PROPERTY OF ASCO POWER TECHNOLOGIES. USE PERMITTED FOR OUR WORK ONLY. ALL RIGHTS OF DESIGN OR INVENTION ARE RESERVED.	DWG. NO. 740256-009		
FINAL APPROVAL			ASCO POWER TECHNOLOGIES, L.P. FLOHAM PARK, NEW JERSEY 07932 U.S.A.	ECN NO. 253518	SHEET 10F1	