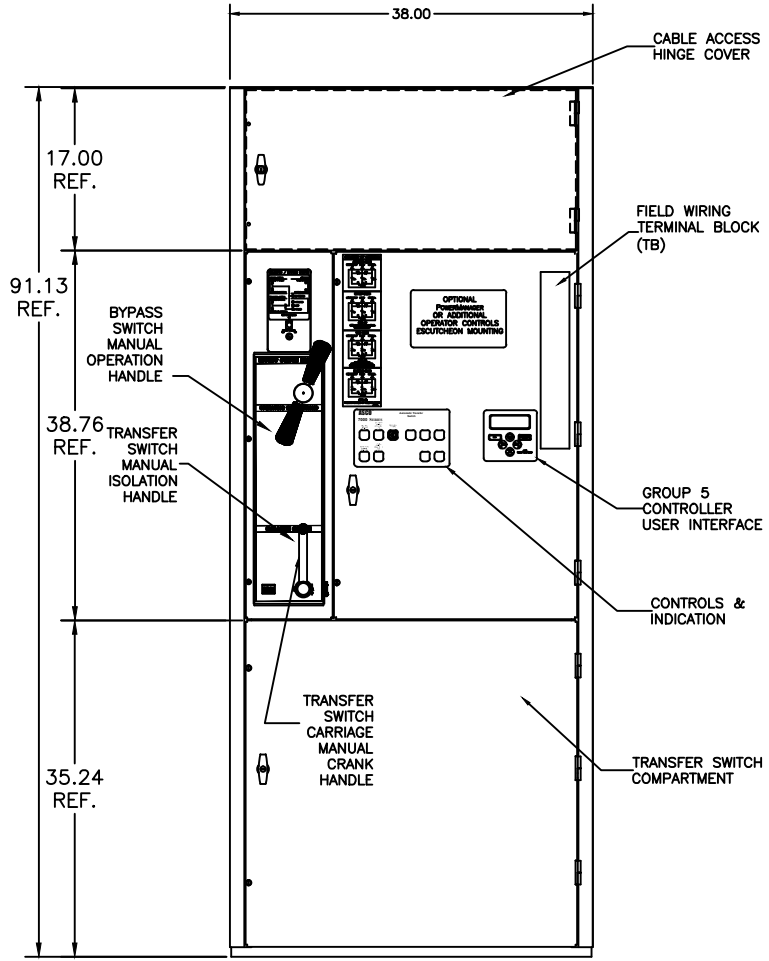
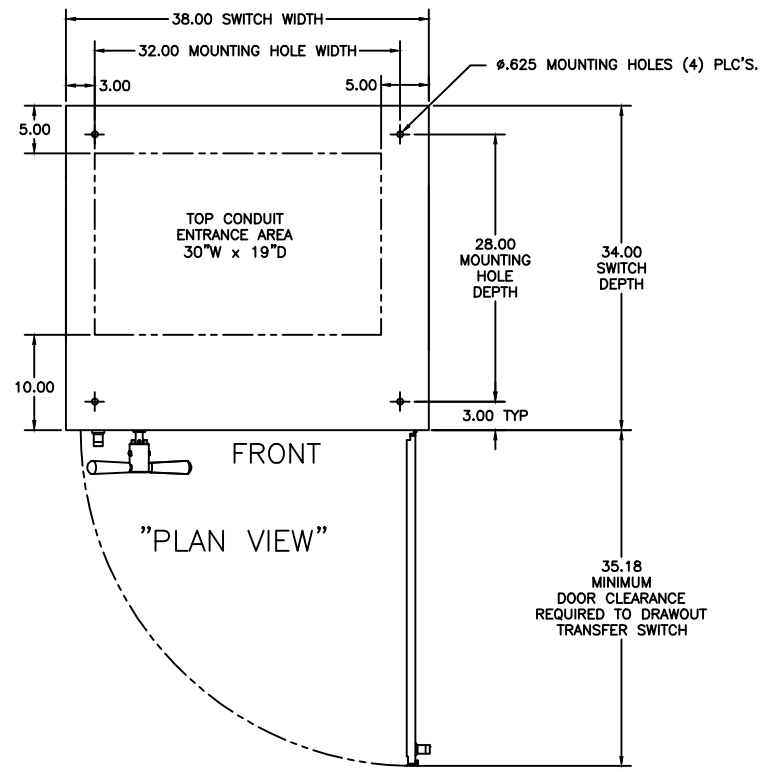
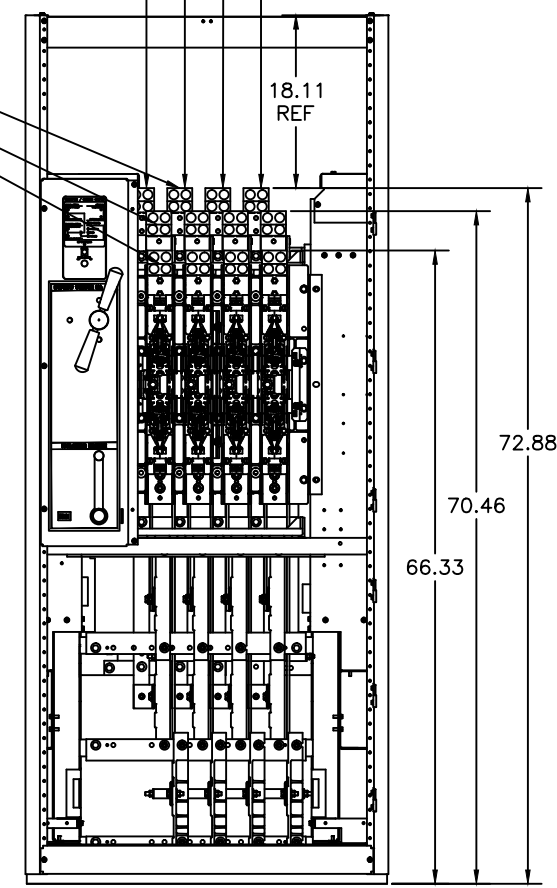
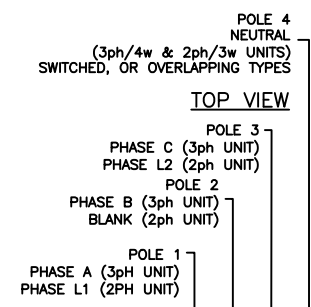
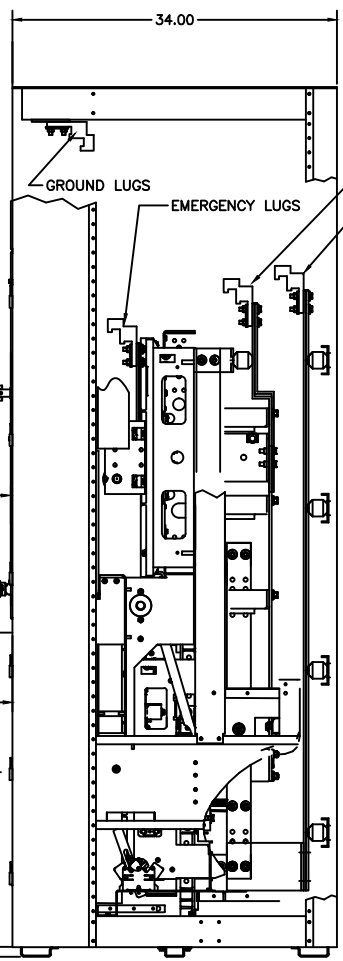


8 7 6 5 4 3 2 1  
**OUTLINE & MOUNTING FOR ASCO® OPEN STYLE FRONT CONNECTED AUTOMATIC TRANSFER & BYPASS-ISOLATION SWITCHES TYPES H7ATB, H7ACTB & H7ADTB RATED 1000-1200 AMPS**



NOTE:  
 TRANSFER SWITCH CAN BE  
 IN FULLY ISOLATED (DISCONNECTED)  
 POSITION WITH DOOR CLOSED.



**GENERAL NOTES**

- FREE STANDING OPEN STYLE. FLOOR MOUNTED. 12GAUGE FORMED FRAME CONSTRUCTION.
- NEC STANDARD GAUGE PAN TYPE DOORS WITH LOCKABLE HANDLES AND REMOVABLE COVERS.
- FINISH: ASA 61 GRAY, POLYESTER POWDER. UL RECOGNIZED.
- SWITCH CONSTRUCTION IS IN ACCORDANCE WITH UL 1008. NORMAL & LOAD LUG BUS RISER CONSTRUCTION IS IN ACCORDANCE WITH UL 891.
- APPLICABLE U.L. LABELS: UL 1008, UL 891.
- PADLOCKING PROVISIONS ARE INCLUDED:  
 ISOLATION HANDLE: THE TRANSFER SWITCH ISOLATION HANDLE MAY BE PADLOCKED WITH THE TRANSFER SWITCH IN THE FULLY ISOLATED (DISCONNECTED POSITION).
- UNIT CAN BE ADAPTED FOR CONNECTION OF BUS DUCT FLANGES. (CONSULT FACTORY)
- RECOMMENDED CLEARANCES:  
 FRONT: 36 INCHES
- A 20% RATED GROUND BUS IS PROVIDED.
- A FULL RATED NEUTRAL CONNECTION FOR EACH SOURCE AND THE LOAD IS OPTIONAL. WHEN PROVIDED IT IS IN ONE OF THE FOLLOWING FORMATS AS SPECIFIED BY THE CATALOG NO. NEUTRAL TYPE:  
 TYPE A: SOLID NEUTRAL BUS  
 TYPE B: SWITCHED NEUTRAL POLE  
 TYPE C: OVERLAPPING NEUTRAL POLE (NOT AVAILABLE ON 7ADTB & 7ACTB UNITS)
- THE STANDARD SWITCH CONFIGURATION IS FOR FRONT EMERGENCY, CENTER LOAD, AND REAR NORMAL. OPTIONALLY, THE SWITCH MAY BE SUPPLIED WITH REVERSE SOURCES. (REFER TO THE WIRING DIAGRAM FURNISHED WITH EACH TRANSFER SWITCH TO DETERMINE TERMINATION POSITIONS).

**CABLING NOTES**

- ALL SIZES SUPPLIED STANDARD WITH MECHANICAL (SCREW TYPE) LUGS ON THE NORMAL, EMERGENCY & LOAD. ONE (1) LUG PER PHASE AND NEUTRAL EACH SUITABLE FOR CONNECTION OF:  
 TWO (2) #2-600 MCM CU/AL CABLE FOR 600 AMP SWITCH AND {4 POLE (B3) 400 AMPS}.  
 FOUR (4) #1/0-750 MCM CU/AL CABLE FOR 800-1200 AMP SWITCH.  
 A. LUG MATERIAL: ALUMINUM ALLOY 6061-T6 WITH ELECTRO TIN PLATED FINISH.  
 B. SCREW MATERIAL: ALUMINUM ALLOY 6262-T9 WITH ELECTRO TIN PLATED FINISH.  
 C. UL LISTED, CSA CERTIFIED.  
 D. LUG SCREW TIGHTENING TORQUE PER UL 486B: 375 IN-LBS.  
 E. SUITABLE WIRE BENDING SPACE IS PROVIDED FOR UP TO TWO (2) 600MCM CABLES PER TERMINAL FOR THE 600 AMP SWITCH & FOUR (4) 600 MCM CABLES PER TERMINAL FOR THE 800-1200 AMP SWITCH.
- OPTIONAL COPPER CRIMP LUGS MAY BE SUPPLIED. UP TO THREE (3) TWO HOLE, LONG BARREL CU CRIMP LUGS RATED FOR UP TO 750MCM. (REFER TO CRIMP LUG INSTALLATION DATA PROVIDED WITH UNIT FOR FULL INSTALLATION DETAILS).  
 A. LUG MATERIAL: HIGH CONDUCTIVITY WROUGHT COPPER FINISH, ELECTRO TIN PLATED.  
 B. UL LISTED, CSA CERTIFIED.  
 C. LUG MOUNTING HARDWARE TIGHTENING TORQUE: (REFER TO WITHSTAND CURRENT RATING LABEL PROVIDED ON EACH TRANSFER SWITCH).  
 D. SUITABLE WIRE BENDING SPACE IS PROVIDED FOR UP TO THREE (3) 750MCM CABLES PER TERMINAL.
- GROUNDING LUG FOR UP TO (12) 750MCM - 1/0 CU/AL CABLES IS PROVIDED AS STANDARD.
- CONSULT FACTORY FOR OTHER TERMINATIONS.

PROJECT NAME: H SERIES		REV. TO SHEET	ECN NO.	BY	APP.	DATE
OUTLINE & MOUNTING		A	236997	TR	WK	5/7/12
1000-1200 AMP OPEN STYLE		SEE ECN		228299		
FRONT CONNECT BYPASS, TB/CTB/DTB		TR		WK 07/22/10		
COMPUTER GENERATED DRAWING		ISSUE		SCALE 1:1		
DRAWN BY: DJB		DATE: 07/22/10		MANUFACTURING TOLERANCES TO BE IN ACCORDANCE WITH ASCO PROCEDURE MP-1-003. FOR PLASTIC PARTS SEE MP-1-005.		ASSEM. REF. NO.
CHECKED BY: WK		DATE: 07/22/10		PROPERTY OF ASCO POWER TECHNOLOGIES. USE PERMITTED FOR OUR WORK ONLY. ALL RIGHTS OF DESIGN OR INVENTION ARE RESERVED.		DWG. NO.
PROJECT APPROVAL: WK		DATE: 07/22/10		DRAWING NO. 736939-032		SIZE DS
FINAL APPROVAL:		DATE:		ASCO® ASCO POWER TECHNOLOGIES, L.P.		SHEET 1 OF 1
				FLORHAM PARK, NEW JERSEY 07932 U.S.A.		