

SUPPLIER'S DECLARATION OF COMPLIANCE

(According to ISO/IEC 17050-1 :2004 standard)

Reference Nr : ITM-PV-T-0036AA

Name of the informant : SCHNEIDER ELECTRIC INDUSTRIES sas

Address of the informant : 2, Chemin des Sources, 38240 MEYLAN
38050 Grenoble Cedex

Refers to : Compliance of the photovoltaic inverter model nr PVS NV1 4000
(commercial name : SunEzy 4000) to the IEC 61000-3-12
standard

The declaration's object previously described is compliant to the requirement of the following documents :

Document nr	Title	Edition / Date of issue
IEC 61000-3-12	Electromagnetic compatibility (EMC) – Part 3-12 : Limits for harmonic currents produced by equipment connected to public low-voltage systems with input current between 16 A and 75 A per phase	November 2004

Additional information :

Results and measurement conditions are described in the following pages

Signed on behalf of :

SCHNEIDER ELECTRIC INDUSTRIES sas
Power Business Unit, Department Equipment and Systems, Direction « Innovation To Market »

Meylan, November 8th, 2007



Jean-Marc ROLLET
Director « Innovation To Market »

Schneider Electric Industries sas

Adresse postale :
2 Chemin des Sources Meylan 38240
F-38050 Grenoble Cedex 9
Tel : +33 (0)4 76 57 60 60
Fax :
www.schneider-electric.com

Société par actions simplifiée au capital de 441.314.256 €
954.503.439 rcs Nanterre – code APE 312A
Siret : 954.503.439.01294
N°ident. TVA : 04 954 503 439
Siège social : 89 Boulevard Franklin Roosevelt
F-92500 Rueil Malmaison

Test conditions:

Date : 2007/01/17 **Brand :** Schneider Electric **Type :** PVS NV1 4000 / SunEzy 4000

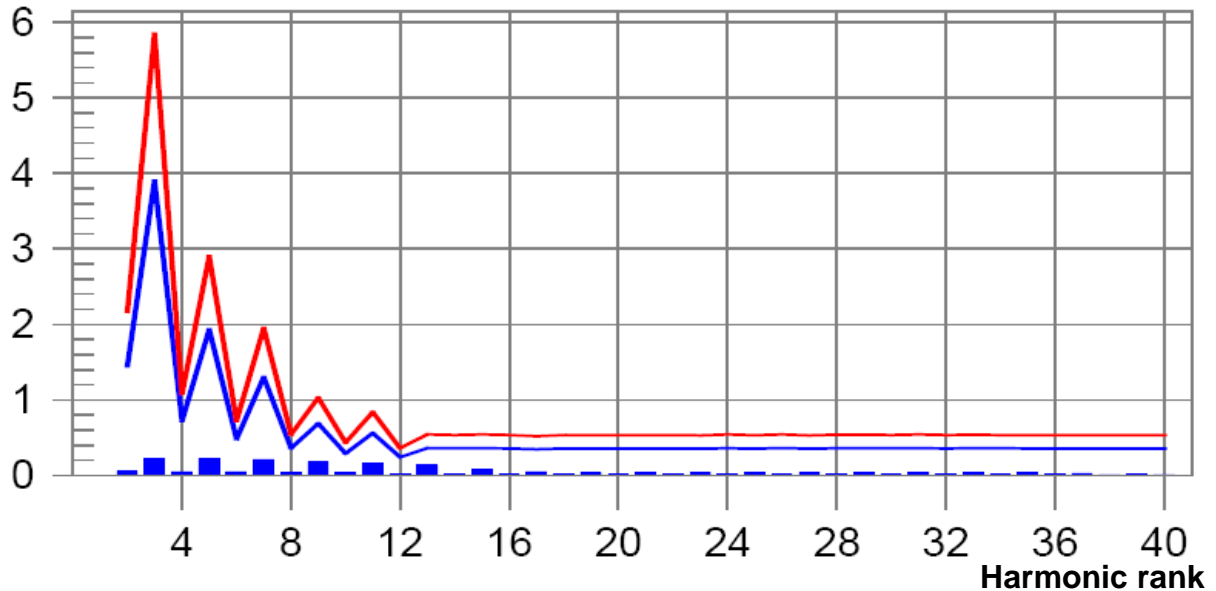
I-THD (%) :	2.620	Limit (%) :	23.00
PWHD (%) :	3.674	PWHD Limit (%) :	23.00

Highest parameter values during the test :

V_RMS (V):	226.16	Frequency (Hz) :	50.00
I_peak (A):	26.966	I_RMS (A) :	18.860
I_fund(A) :	18.489	Power (W):	4247
Power factor:	0.996		

Harmonic limit lines :

Current RMS (A)



Legend:

Blue bars: Measured values
 Blue curve: Limit values
 Red curve: 150% of limit values

Result: The test is passed.

Schneider Electric Industries sas

Adresse postale :
 2 Chemin des Sources Meylan 38240
 F-38050 Grenoble Cedex 9
 Tel : +33 (0)4 76 57 60 60
 Fax :
www.schneider-electric.com

Société par actions simplifiée au capital de 441.314.256 €
 954.503.439 rcs Nanterre – code APE 312A
 Siret : 954.503.439.01294
 N°ident. TVA : 04 954 503 439
 Siège social : 89 Boulevard Franklin Roosevelt
 F-92500 Rueil Malmaison

Harmonic rank	Harmonic average	Limit	% of the limit	Harmonic max.	150% limit	% of 150% limit	Status
2	0.048	1.445	3.3	0.056	2.168	2.56	Ok
3	0.213	3.902	5.5	0.223	5.853	3.82	Ok
4	0.038	0.723	5.3	0.046	1.084	4.28	Ok
5	0.21	1.933	10.9	0.22	2.9	7.58	Ok
6	0.034	0.482	7	0.045	0.723	6.28	Ok
7	0.197	1.301	15.1	0.209	1.951	10.69	Ok
8	0.029	0.361	8	0.038	0.542	7.02	Ok
9	0.172	0.686	25	0.18	1.03	17.48	Ok
10	0.023	0.289	7.9	0.029	0.434	6.74	Ok
11	0.159	0.56	28.4	0.164	0.84	19.58	Ok
12	0.016	0.241	6.5	0.023	0.361	6.47	Ok
13	0.123	0.361	34.1	0.132	0.542	24.3	Ok
14	0.01	N/A	N/A	0.015	N/A	N/A	N/A
15	0.064	N/A	N/A	0.072	N/A	N/A	N/A
16	0.012	N/A	N/A	0.015	N/A	N/A	N/A
17	0.044	N/A	N/A	0.049	N/A	N/A	N/A
18	0.01	N/A	N/A	0.013	N/A	N/A	N/A
19	0.03	N/A	N/A	0.034	N/A	N/A	N/A
20	0.006	N/A	N/A	0.01	N/A	N/A	N/A
21	0.029	N/A	N/A	0.031	N/A	N/A	N/A
22	0.008	N/A	N/A	0.01	N/A	N/A	N/A
23	0.033	N/A	N/A	0.035	N/A	N/A	N/A
24	0.01	N/A	N/A	0.013	N/A	N/A	N/A
25	0.041	N/A	N/A	0.043	N/A	N/A	N/A
26	0.01	N/A	N/A	0.012	N/A	N/A	N/A
27	0.039	N/A	N/A	0.041	N/A	N/A	N/A
28	0.009	N/A	N/A	0.011	N/A	N/A	N/A
29	0.041	N/A	N/A	0.043	N/A	N/A	N/A
30	0.008	N/A	N/A	0.01	N/A	N/A	N/A
31	0.036	N/A	N/A	0.037	N/A	N/A	N/A
32	0.008	N/A	N/A	0.01	N/A	N/A	N/A
33	0.03	N/A	N/A	0.032	N/A	N/A	N/A
34	0.009	N/A	N/A	0.011	N/A	N/A	N/A
35	0.029	N/A	N/A	0.031	N/A	N/A	N/A
36	0.006	N/A	N/A	0.009	N/A	N/A	N/A
37	0.026	N/A	N/A	0.028	N/A	N/A	N/A
38	0.006	N/A	N/A	0.008	N/A	N/A	N/A
39	0.021	N/A	N/A	0.022	N/A	N/A	N/A
40	0.005	N/A	N/A	0.007	N/A	N/A	N/A

Schneider Electric Industries sas

Adresse postale :
 2 Chemin des Sources Meylan 38240
 F-38050 Grenoble Cedex 9
 Tel : +33 (0)4 76 57 60 60
 Fax :
www.schneider-electric.com

Société par actions simplifiée au capital de 441.314.256 €
 954.503.439 rcs Nanterre – code APE 312A
 Siret : 954.503.439.01294
 N°ident. TVA : 04 954 503 439
 Siège social : 89 Boulevard Franklin Roosevelt
 F-92500 Rueil Malmaison