



The I-LINE® II Busway
MISSING LINK
 Quik-Ship Program
 from Square D

The Pieces You Need
 To Complete Your
 Busway Run in 5 Days or Less!

I-Line II Busway MISSING LINK Quik-ship, our innovative new program, guarantees shipment of up to four factory built straight lengths or elbows in just five working days or we pay premium routing (air freight if necessary). The MISSING LINK program can help you make ends meet in many situations.

Three examples follow:

1

Stock Completer Link - On any stock order that requires one to four additional non-stock pieces to complete. Just give us the details and we'll quick-ship it.

2

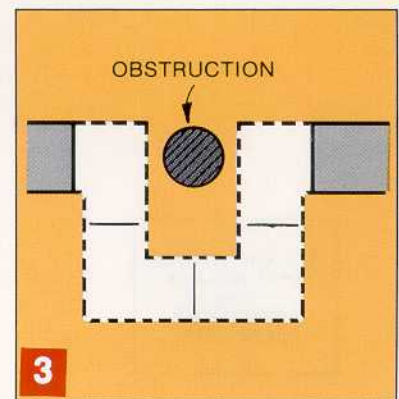
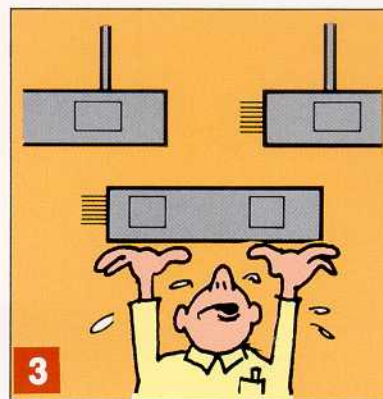
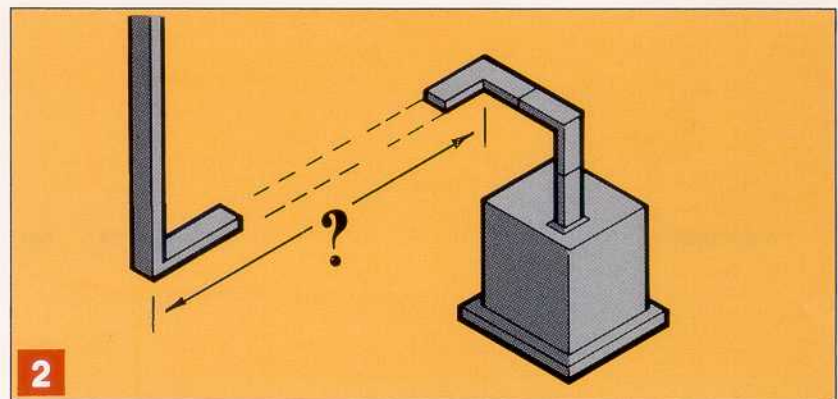
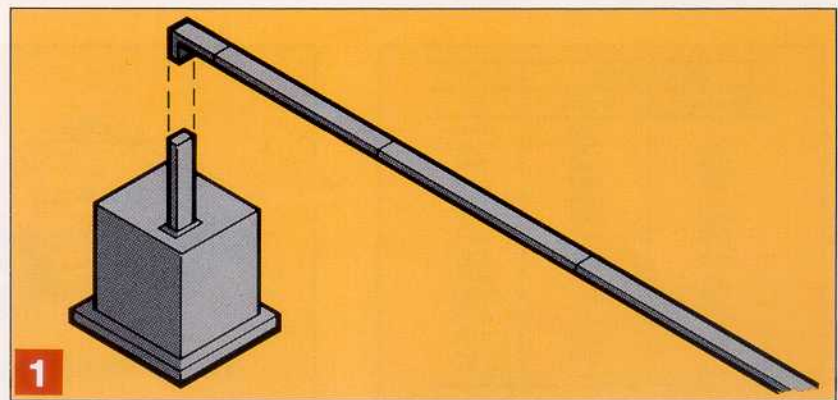
Peace of Mind Link - No need to worry if that critical dimension was 66'-3" or 63'-6". Just leave out a piece for final field measurement and relax. It will be on its way in five days for a perfect fit.

3

Murphy's Law Link - Because things don't always go as planned and many times the plumbers or HVAC people get there first. We'll ship you the missing link to correct an otherwise well-planned job.

The Missing Link covers all I-Line II Busway in amperages from 800 through 5000A. Straight lengths will be constructed as feeder busway and are available in one inch increments from 16 to 120 inches. Elbows are available with leg lengths ranging from standard through 48 inches. See diagram to insure correct measurement.

Specify MISSING LINK and we'll ship within 5 working days after the factory receives your order.

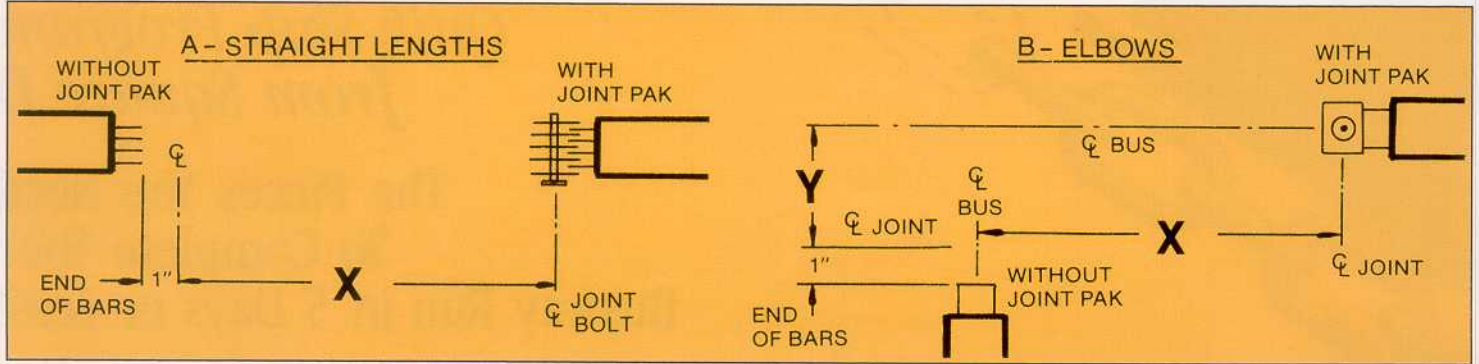


How to Properly Measure Your Missing Link(s)

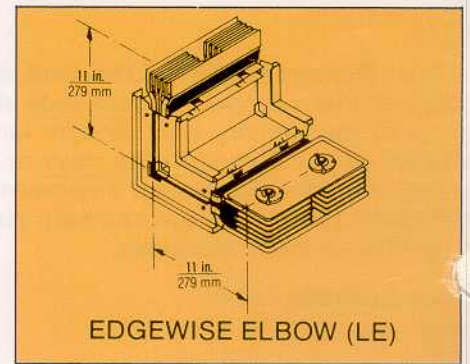
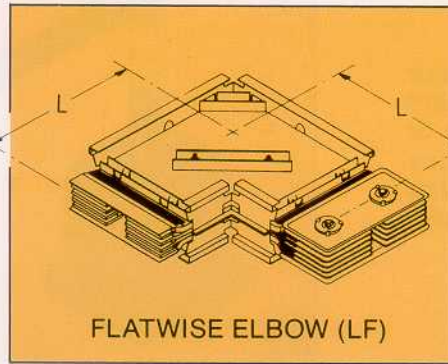
All MISSING LINK dimensions should be measured to the nearest whole inch from centerline of joint to centerline of joint. Or centerline of joint to centerline of busway.

As shown in diagram A, the centerline of the joint is located at the joint bolt on the end with a joint-pak installed. If the joint-pak is not installed, the centerline of the joint is one inch from the end of the busbars.

If it is necessary to measure an elbow, the two dimensions X & Y (shown in diagram B) are all that's needed. Be sure to measure from centerline of joint (as described above) to centerline of busway housing. You must also specify whether an edgewise or flatwise elbow is required. The table below lists the standard minimum elbow dimensions for each amperage.



Ampere Rating		L
Aluminum	Copper	In.
—	800	11.00
800	1000	11.00
1000	1200	12.00
1200	1350	12.00
—	1600	12.00
1350	2000	13.00
1600	—	13.00
2000	2500	15.00
—	3000	16.00
2500	—	17.00
3000	—	18.00
—	4000	21.00
—	5000	21.00
4000	—	22.00



Copyright © Square D Company 1987

Printed in U.S.A.

20M BL 3/87

Bulletin SO-157

the MISSING LINK

BULK RATE
U.S. POSTAGE
PAID
DAYTON, OHIO
PERMIT NO. 638

SQUARE D COMPANY
5735 College Corner Rd.
Oxford, Ohio 45056