



Schneider Electric
ClearSCADA



ClearSCADA 2017 - At a Glance

ClearSCADA 2017 introduces a new era of control for geographically dispersed infrastructure, providing customers with unprecedented insights and management across their asset base.

The latest release of ClearSCADA 2017 is focused on next generation functionalities with intuitive location support, overlaid with real-time weather data and GPS mapping; optimizing the management of telemetry solutions & remote SCADA assets.

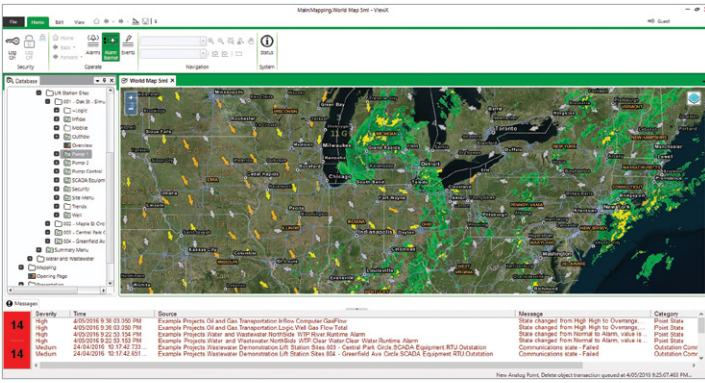
What's New in ClearSCADA 2017:

Location support – providing improved clarity of asset location via location-based alarming and filtering, with asset locations also displayed on integrated maps.

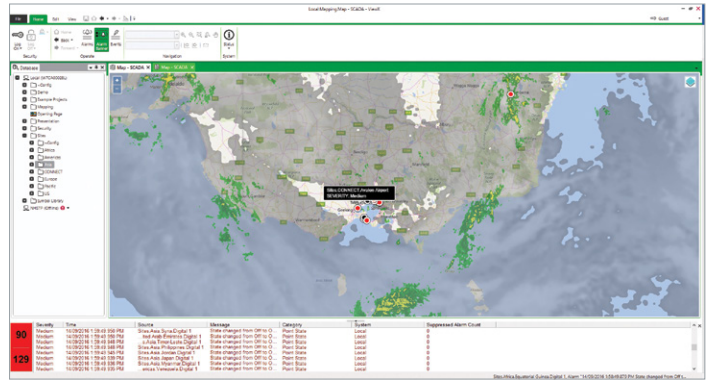
- **Integrated mapping** - facilitating the selection of online map sources, ArcGIS map information, and/or Web Map Service (WMS) information that can include other GIS, weather and other valuable real-time information.
- **Active Directory user management** – allowing ClearSCADA users to be managed centrally within Active Directory (AD), permissions managed centrally from AD, with new User Accounts created automatically on logon when using AD Authentication.
- **Additional functionality** - Control & Feedback Validation Rules, Advanced Trio Radio Diagnostics, SOFREL RTU Driver, plus enhancements to Security and System Administration.

Life Is On

Schneider
Electric

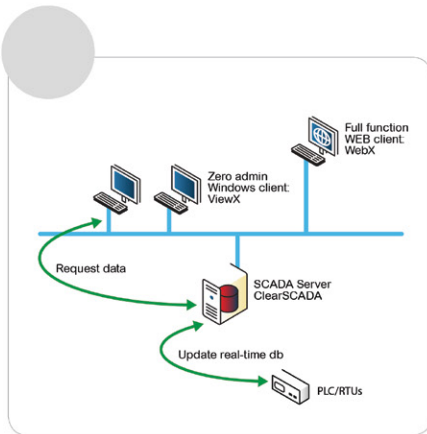


Display native maps in ClearSCADA, including overlay of real-time weather data

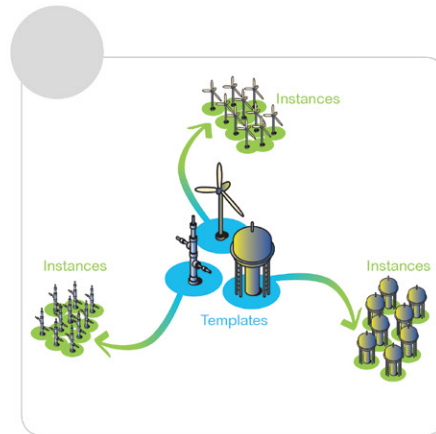


Overlay the position of your assets and users, with animation based on alarm state, etc.

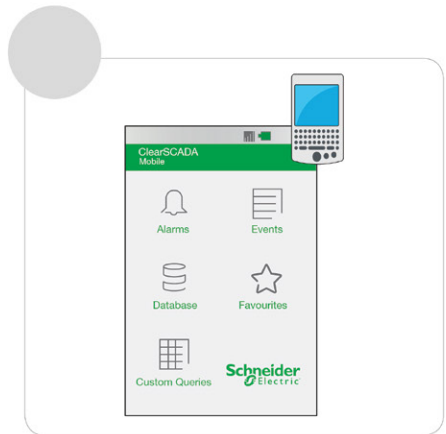
ClearSCADA helps to reduce costs across the entire SCADA system with optimized SCADA functionality, easy to modify and replicate object templates as well as remote access via mobile devices.



Optimized SCADA functionality



Easy-to-replicate templates save time and money



ClearSCADA Mobile

Why ClearSCADA 2017?

- Reduce total cost of ownership
- Enhance operation & maintenance
- Protect your investment as SCADA systems expand
- Enhance SCADA system reliability and security
- Manage data in challenging environments
- Increase operational efficiency

For more on ClearSCADA 2017 visit software.schneider-electric.com/clearscada

ClearSCADA Resources

Visit the ClearSCADA Knowledge Base and Interactive Forum for more on ClearSCADA 2017, latest releases, news and product updates.

Knowledge Base -

resourcecenter.controlmicrosystems.com

Interactive Forum -

telemetry.schneider-electric.com/id3/forum

Life Is On

