

Product End-of-Life Instructions

Product Range: Pragma

Marketing Model/Name: (List of multiple models if applicable)

PRA32118

Purpose:

The product family must be disposed according to the legislation of the country. This document is intended for use by end of life recyclers or treatment facilities. It provides the basic information to assure an appropriate end of life treatment for the components and materials of the product.

Note :

This product family *is not* in the scope of EU directive 2002/96/EC, Waste Electrical and Electronic Equipment (WEEE).



Size in mm :

H x L x D in mm: 360x 490 x 110

Weight in kg:

Between 2,09 and 20,64

Operations recommended for the end of life treatment

There are several steps to process the products at the end of life so as to recover components, materials or energy : Reuse → Separation for special treatment → Other dismantling → Shredding.

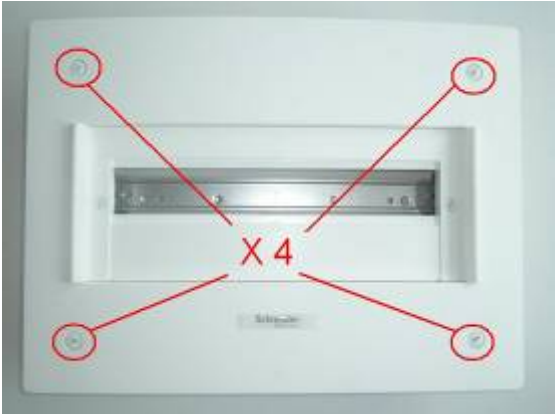
The components of the products that optimize the recycling performances are listed, identified and located hereunder.

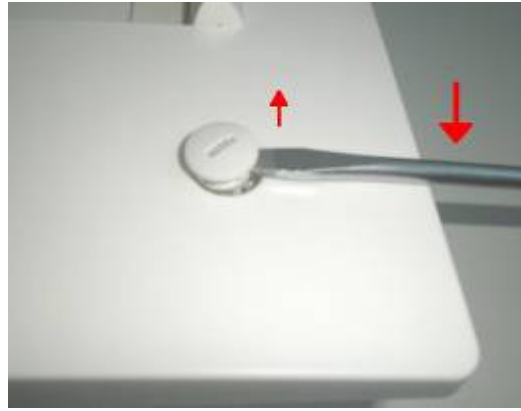
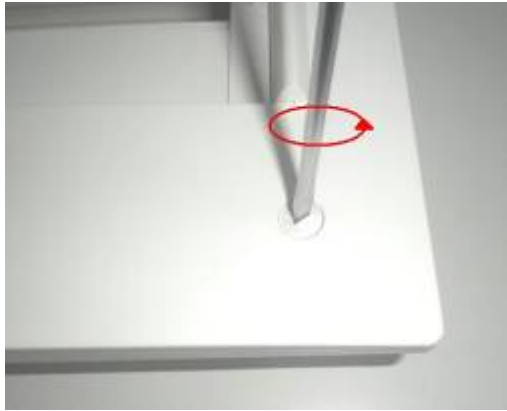
Element of separation for special treatment:



Process of dismantling:

1) Unscrew the front face as indicated in the pictures:

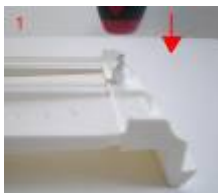




2) Unscrew the plastron from the front face:



3) Remove the screws from the plastron with a strong hit:



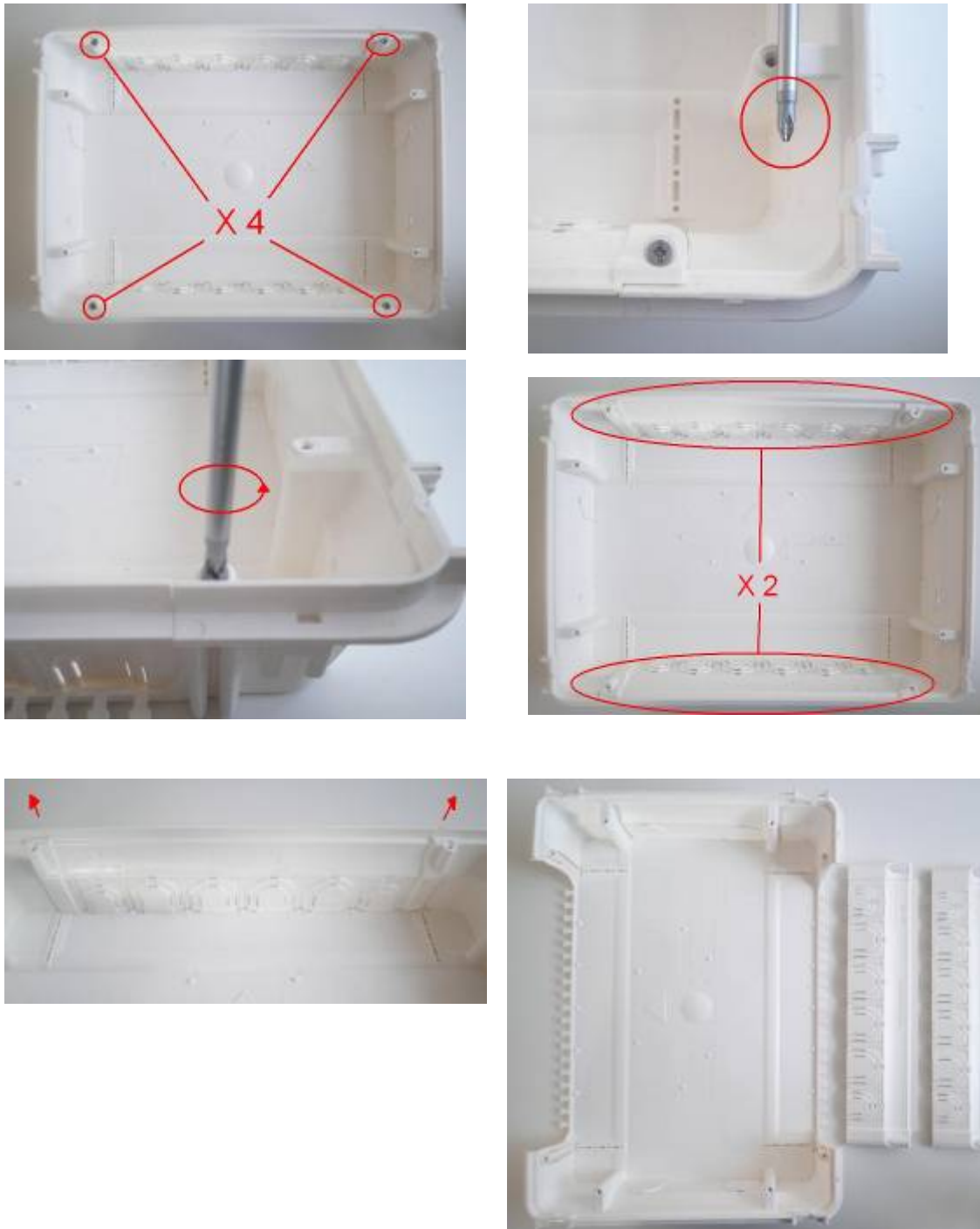
4) Separate the box from the front face and keep the box:



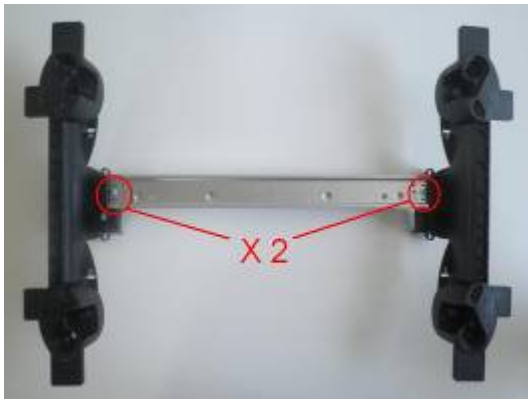
5) Unscrew the rail din block from the box:



6) Keep the box, unscrew and remove the lateral plates:



Other Dismantling:



Recommendation	Number on drawing	Components	Weight (g)	Comment
Special treatment	1	Front face	401	Bromide flame retardant
	2	Plastron	168	Bromide flame retardant
	3	Lateral plate (X2)	176	Bromide flame retardant
	4	Box	550	Bromide flame retardant
Other dismantling		Rail din		

Schneider Electric SA
 43-45, boulevard Franklin Roosevelt
 F-92500 Rueil-Malmaison Cedex (France)
 Tel.: +33 (0) 1 41 29 70 00
 www.schneider-electric.com

The version of the Guide used to create the document: End of Life
 Instruction Drafting Guide of Schneider Electric version V3

ENVEOLI111226EN

Publication date : 18/11/2011