

# Product End-of-Life Instructions

Product End-of-life Instructions

ODACE RF Battery Emitter.



Marketing Model/Name:  
(List of multiple models if applicable)  
S520571, S520577

Size H x L X D:  
15 x 85 x 85 mm

Weight:  
Between 45 grams and 49 grams without batteries  
Between 48 grams and 52 grams with batteries

# Product End-of-life Instruction

## Purpose

The product family must be disposed according to the legislation of the country. This document is intended for use by end of life recyclers or treatment facilities. It provides the basic information to assure an appropriate end of life treatment for the components and materials of the product.

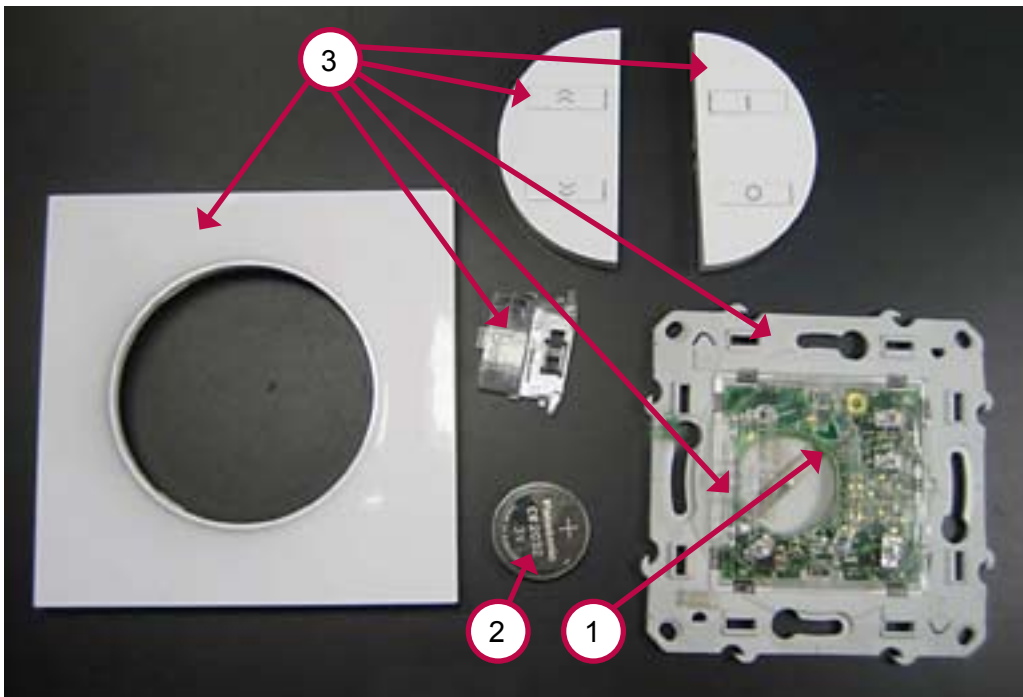
## Note

This product family is not in the scope of EU directive 2002/96/EC, Waste Electrical and Electronic Equipment (WEEE).

## Operations recommended for the end of life treatment

There are several steps to process the products at the end of life so as to recover components, materials or energy : Reuse → Separation for special treatment → Other dismantling → Shredding.

**The components of the products that optimize the recycling performances are listed, identified and located hereunder.**



Use the appropriate items and suppress the others.

Recommendation	Number on drawing	Components	Weight (g)	Comment
Separation for special treatment	1	PCBA RF	5	1 part
Separation for special treatment	2	Battery	3	1 part
Dismantling	3	Plastics	36	6 parts

**Schneider Electric Industries SAS**  
 35 rue Joseph Monier  
 92500 Rueil-Malmaison  
 France

www.schneider-electric.com

The version of the Guide used to create the document: End of Life Instruction Drafting Guide of Schneider Electric version V2.  
 Publication date: 12/2010