

Product End of Life Instructions

TOPLUX IP55 10/4NC GSE

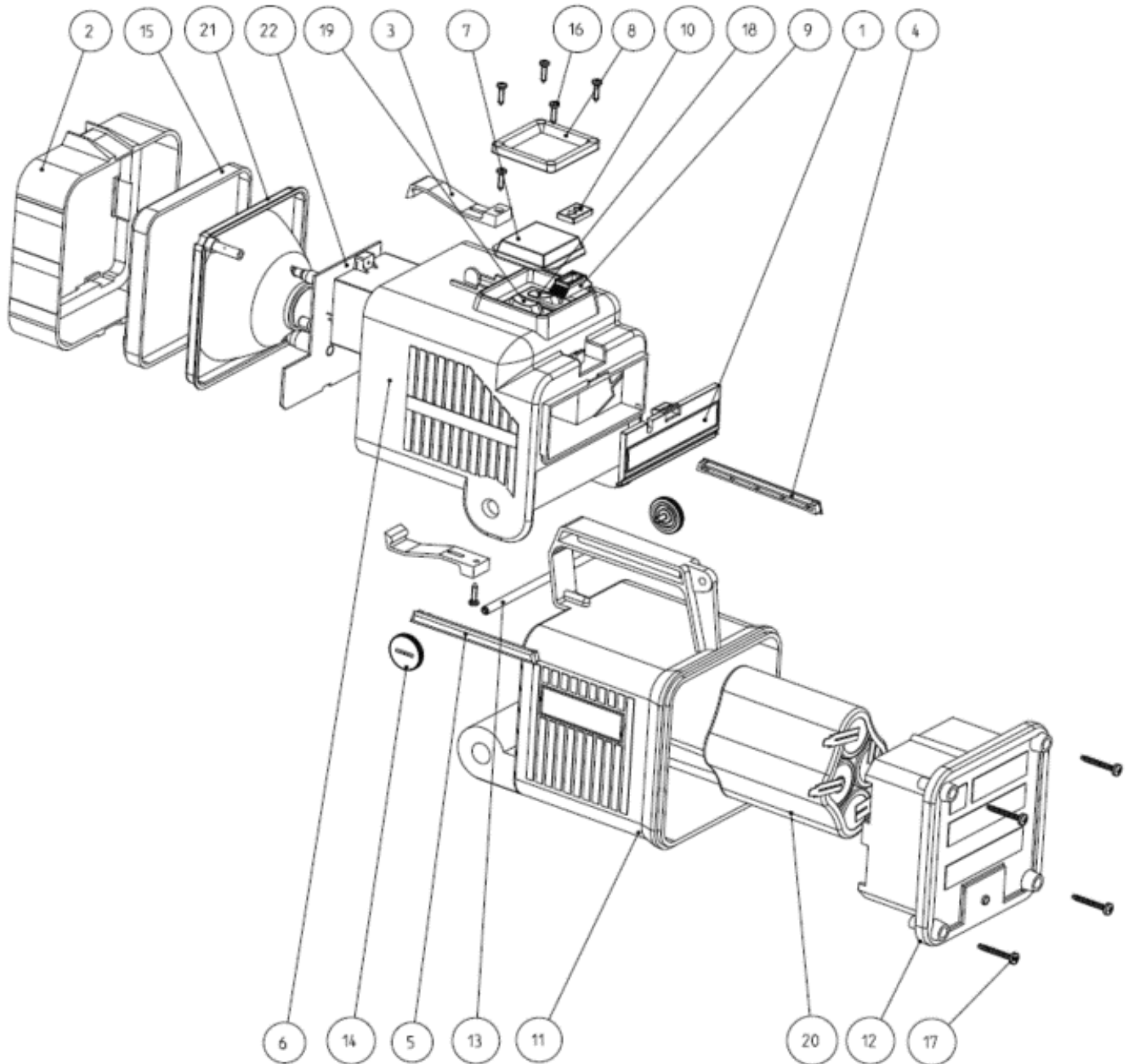




Potential disassembly risks



End of Life Instructions



Recommendation	Number on drawing	Component / Material	Weight (in g)	Comment
To be dismantled	1	ABS (headgear)	50	
To be dismantled	2	ABS (HEAD RING HEAD RING)	75	
To be dismantled	3	PC (RING HOOK)	3	
To be dismantled	4	ABS (Left HANDLE COVER)	10	
To be dismantled	5	ABS (Right HANDLE COVER)	10	
To be dismantled	6	ABS (HEAD TOPLUX)	320	
To be dismantled	7	PVC (Switch protector)	5	
To be dismantled	8	ABS (Gasket)	2	
To be dismantled	9	PP (HANDLE SAFETY)	5	
To be dismantled	10	PP (TOP SAFETY)	5	
To be dismantled	11	ABS (Body)	320	
To be dismantled	12	ABS (Bottom)	300	
To be dismantled	13	PA (SEAL BUSHING)	8	
To be dismantled	14	PA (SEAL BUTTON)	2	
To be dismantled	15	PC (Transparent screenX4)	18X4	
To be dismantled	16	Steel (CREW 4X1/2 NIK)	0,5X4	
To be dismantled	17	Steel (SCREW 4X1-1/4)	1X4	
To be dismantled	18	PA (switch)	7	
To be dismantled	19	PA (switch)	7	
To be depolluted	20	BATT.NC5VREF 6V8AH PIR/CICL	1100	
	21	PC (Reflector)	20	
To be depolluted	22	Electronic Board (Communication) > 10cm ²	52	

Product description

Manufacturer identification	Schneider Electric Industries SAS
Brand name	Schneider Electric
Product function	Maintained emergency luminaire (EN 60598-2-22) luminaire in which the emergency lighting lamps are energized at all times when normal or emergency lighting is required
Product reference	OVA41319E
Additional similar product references	OVA41319E OVA41318E
Total representative product mass	2450 g
Representative product dimensions	120 x 165 x 262 mm
Date of information release	03/2023

Additional information

Legal information	This product family is in the scope of European Union directive 2012/19/EU on Waste Electrical and Electronic Equipment (WEEE). The product family must be disposed according to the legislation of the country. This document is intended for use by end of life recyclers or treatment facilities. It provides the basic information to assure an appropriate end of life treatment for the components and materials of the product.	
Recyclability potential	75%	Recyclability rate has been calculated based on REEECY'LAB tool developed by Ecosystem, for components/materials not covered by the tool, data from the "ECO'DEEE recyclability and recoverability calculation method" was taken. If no data was found a conservative assumption was used (0% recyclability).

Schneider Electric Industries SAS
Country Customer Care Center
<http://www.schneider-electric.com/contact>
35, rue Joseph Monier
CS 30323
F- 92500 Rueil Malmaison Cedex
RCS Nanterre 954 503 439
Capital social 896 313 776 €

www.se.com

ENVEOLI2301002_V1

Published by Schneider Electric

© 2023 - Schneider Electric – All rights reserved

03/2023