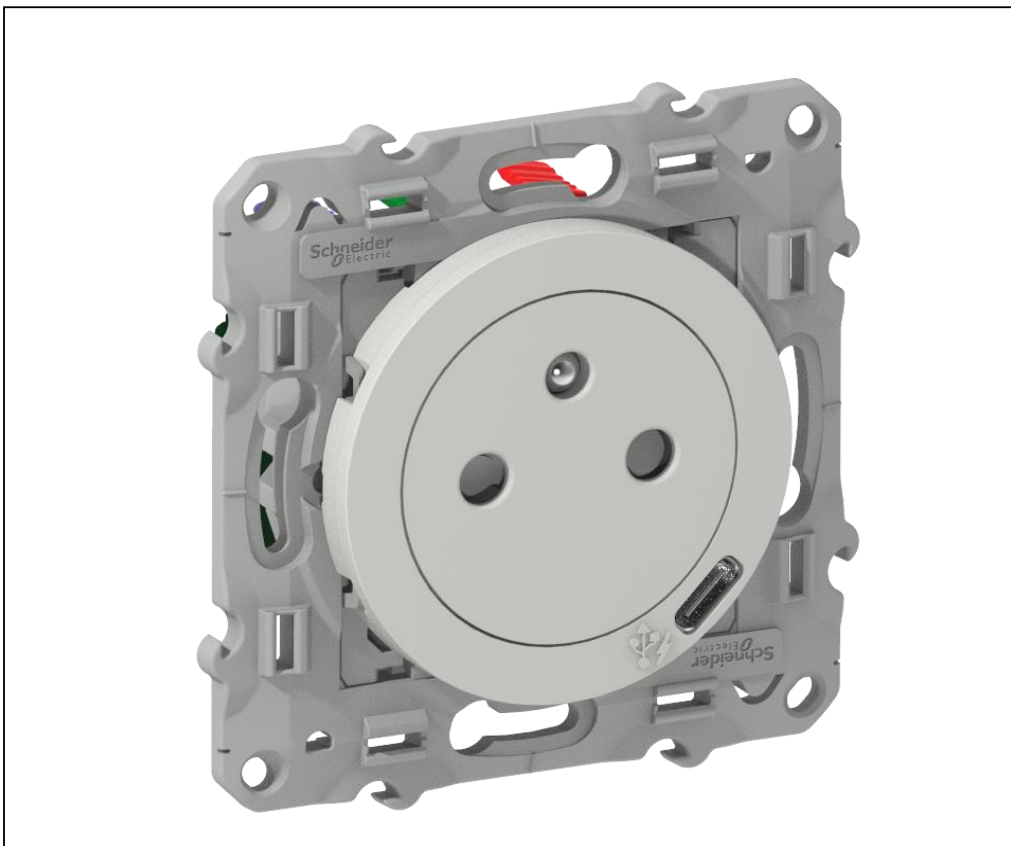


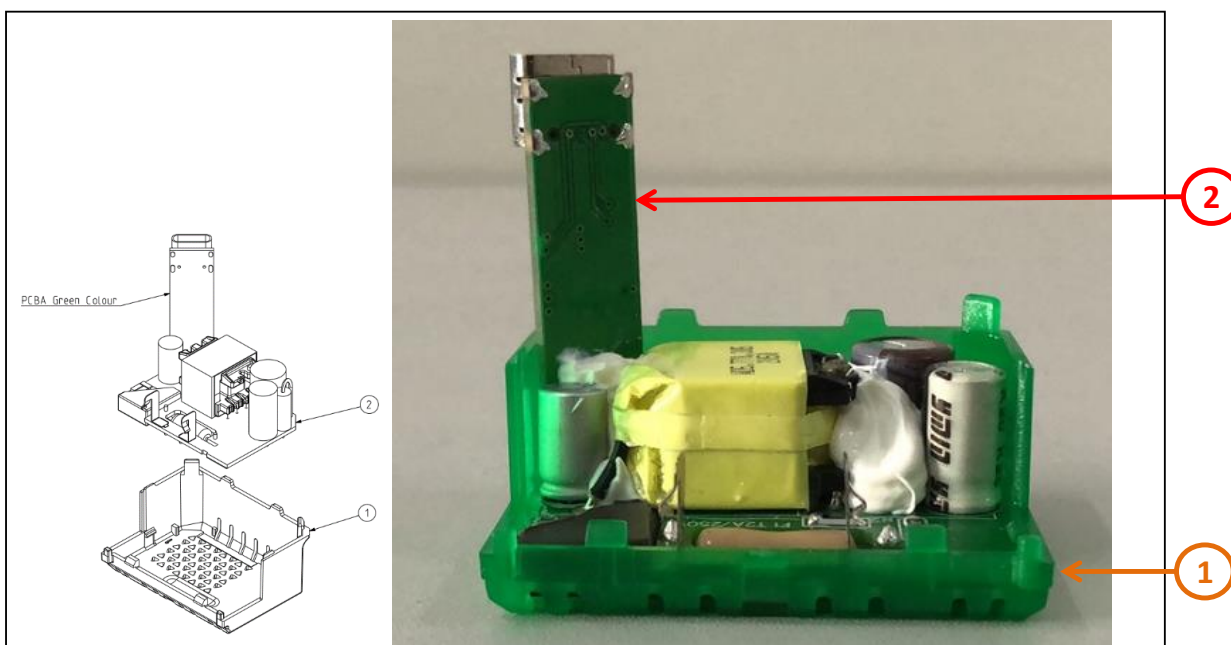
Product End of Life Instructions

ODACE COMBI FLUSH PIN EARTH SO + USB C





End of Life Instructions



Recommendation	Number on drawing	Component / Material	Weight (in g)	Comment
To be dismantled	1	PCB COVER FOR SO+USB	2.72	
To be depolluted	2	Electronic Board (Power) > 10cm ²	19.3	
To be depolluted	-	Liquid and pasty substances	0.014	



Product description

Manufacturer identification	Schneider Electric Industries SAS
Brand name	Schneider Electric
Product function	The main function of Odace combi socket outlet and USB is to allow users to connect and disconnect the plug of an electrical load and the source of a signal from a network.
Product reference	S520089
Additional similar product references	S520089
Total representative product mass	69.5 g
Representative product dimensions	71 x 71 x 42
Date of information release	12/2021



Additional information

Legal information

This product family is in the scope of European Union directive 2012/19/EU on Waste Electrical and Electronic Equipment (WEEE). The product family must be disposed according to the legislation of the country. This document is intended for use by end of life recyclers or treatment facilities. It provides the basic information to assure an appropriate end of life treatment for the components and materials of the product.

Recyclability potential

17%

Based on "ECO'DEEE recyclability and recoverability calculation method" (version V1, 20 Sep. 2008 presented to the French Agency for Environment and Energy Management: ADEME).

Schneider Electric Industries SAS
Country Customer Care Center
<http://www.schneider-electric.com/contact>
35, rue Joseph Monier
CS 30323
F- 92506 Rueil Malmaison Cedex
RCS Nanterre 954 503 439
Capital social 896 313 776 €

www.schneider-electric.com

Published by Schneider Electric

ENVEOLI2110004_V1

© 2019 - Schneider Electric – All rights reserved

12/2021