

# Product End of Life Instructions

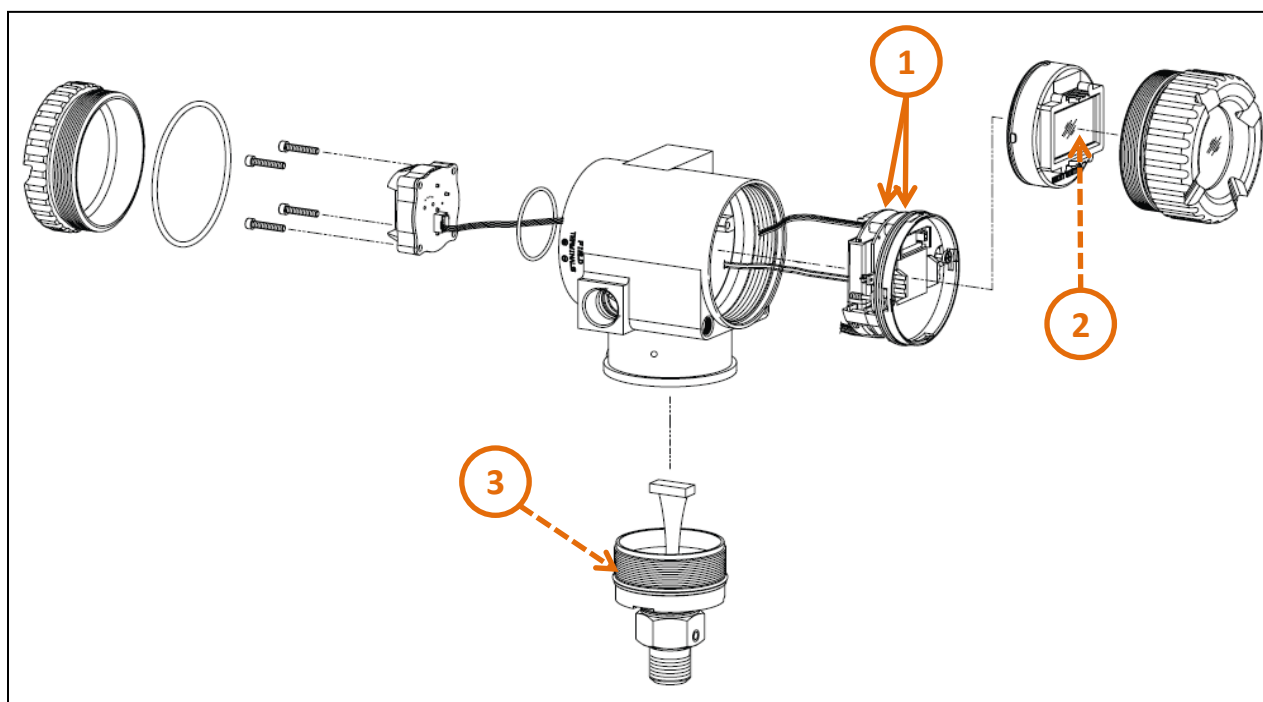
## INTELLIGENT PRESSURE TRANSMITTER

**IGP, IAP, IDP and IMV series of intelligent pressure sensing and transmitting gauges (multiple configurations)**





## End of Life Instructions



Recommendation	Number on drawing	Component / Material	Weight (g)	Comment
To be depolluted	1	Printed Circuit Boards Assemblies (PCBAs)	73	Two adjacent PCBAs (56g and 17g) are within the same assembly.
To be depolluted	2	Display PCBA	21	PCBA located within display assembly.
To be depolluted	3	Sensor PCBA Assembly	418	Sensor PCBA (8g) located within threaded sensor neck assembly. Item is welded and cannot be disassembled.



## Product description

Manufacturer identification	Schneider Electric Industries SAS
Brand name	Schneider Electric
Product function	Field installed electronic transmitter for measuring pressure under a range of conditions within Industrial applications.
Product reference	IGP10S
Additional similar product references	IGP10S IGP10 IGP20 IGP25 IGP50 IAP10 IAP10S IAP20 IDP10 IDP10S IDP25 IDP50 IMV25 IMV30 IMV31 IAP05S IAP50S IDP05S IDP50S IGP05S IGP50S
Total representative product mass	1500 g
Representative product dimensions	165 mm x 96 mm x 124 mm
Accessories	None
Date of information release	07/2019



## Additional information

Legal information	This product family is in the scope of European Union directive 2012/19/EU on Waste Electrical and Electronic Equipment (WEEE). The product family must be disposed according to the legislation of the country. This document is intended for use by end of life recyclers or treatment facilities. It provides the basic information to assure an appropriate end of life treatment for the components and materials of the product.	
In case of special transportation: transportation method	No special transportation required.	
Recyclability potential	<b>69%</b>	Based on “ECO’DEEE recyclability and recoverability calculation method” (version V1, 20 Sep. 2008 presented to the French Agency for Environment and Energy Management: ADEME).

Schneider Electric Industries SAS

Country Customer Care Center  
<http://www.schneider-electric.com/contact>

35, rue Joseph Monier  
CS 30323  
F- 92506 Rueil Malmaison Cedex  
RCS Nanterre 954 503 439  
Capital social 896 313 776 €

[www.schneider-electric.com](http://www.schneider-electric.com)

ENVEOLI1801005-V01.02-EN

Published by Schneider Electric

© 2019 - Schneider Electric – All rights reserved

07/2019