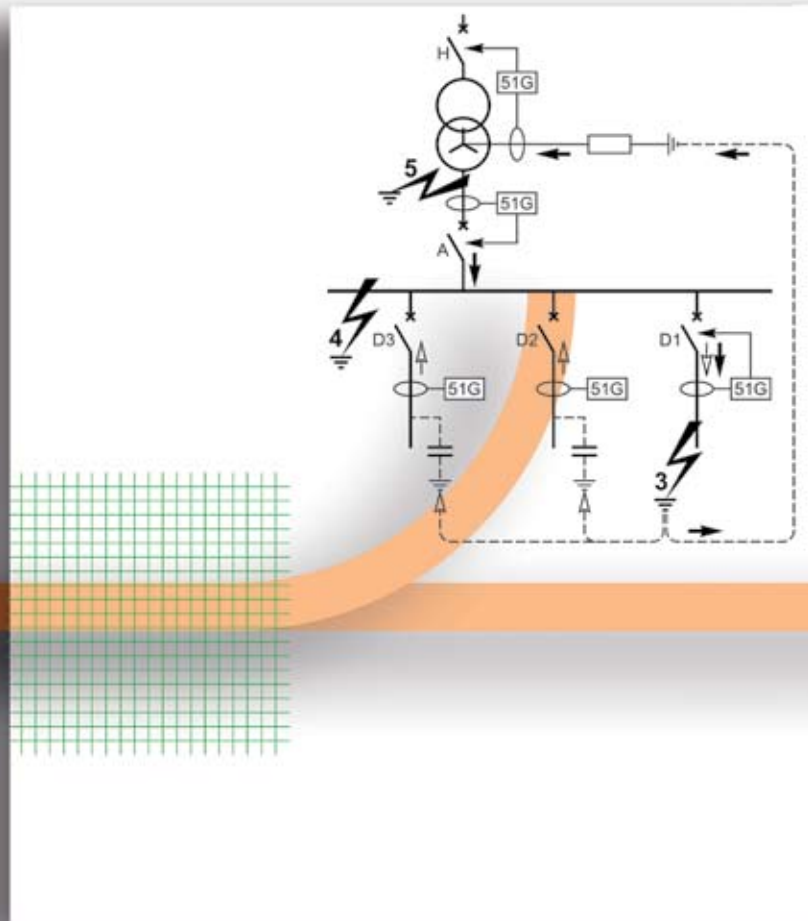


Electrical network protection

Protection guide

Guide





Schneider Electric Industries SAS

Postal address:
Communication Distribution Electrique
38050 Grenoble Cedex 9 - France
Tel.: +33 (0)4 76 57 60 60

<http://www.schneider-electric.com>
<http://www.merlin-gerin.com>
<http://www.sepamrelay.com>

As standards, specifications and designs change from time to time, please ask for confirmation of the information given in this publication.



This document has been
printed on ecological paper

Design: Graphème
Publication: Schneider Electric
Printed: Imprimerie du Pont-de-Claix