

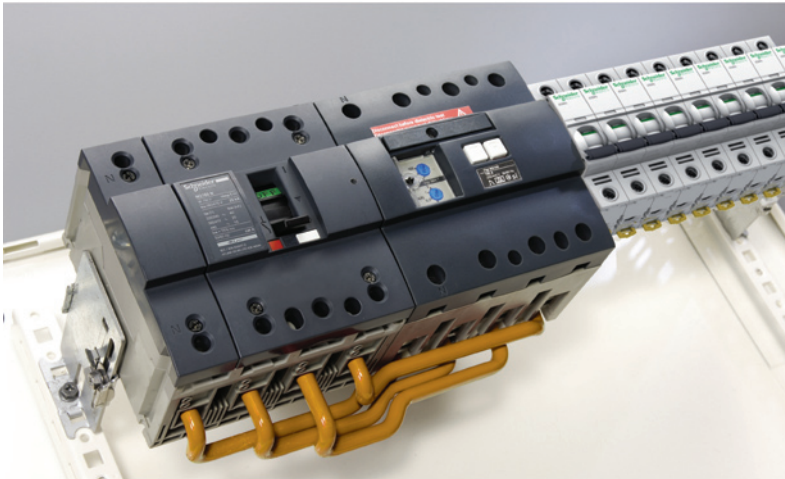
Low voltage

# NG160

## 16 to 160 A

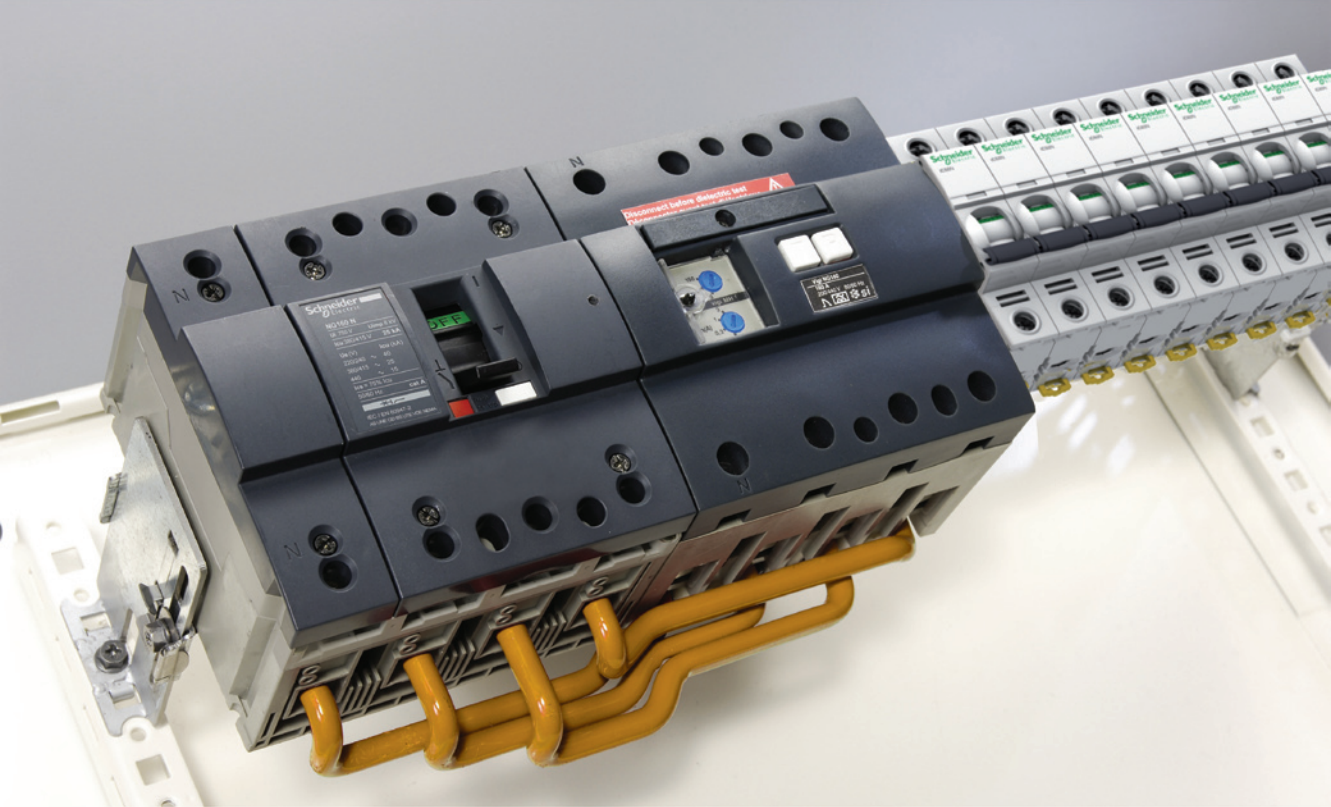
Modular incoming circuit breakers  
and switch-disconnectors  
for DIN-panel installation

2013



# NG160 circuit breaker

Ready to install





**Schneider Electric Industries SAS**

35, rue Joseph Monier  
CS 30323  
F- 92506 Rueil Malmaison Cedex

RCS Nanterre 954 503 439  
Capital social 896 313 776 €  
[www.schneider-electric.com](http://www.schneider-electric.com)

*As standards, specifications and designs change from time to time, please ask for confirmation of the information given in this publication.*



*This document has been printed on ecological paper*

Design: Schneider Electric  
Photos: Schneider Electric  
Printed: