

Transparent Ready

System approach

Embedded Web services

FactoryCast Gateway



TSX ETG 1000 TSX ETG 1010

Presentation

FactoryCast Gateway is a new offer of "all in one" intelligent Web gateways integrating, in a stand alone compact unit:

- All the TCP/IP network communication and serial link (Modbus or Uni-Telway) interfaces
- An RAS (*Remote Access server*) / IP Router
- A customizable Web server.

TSX ETG 1000/1010 gateways are a low-cost response to the need to integrate serial link installations in an existing Ethernet TCP/IP infrastructure as well as requirements for remote access services including remote diagnostics, remote maintenance, remote monitoring and remote control.

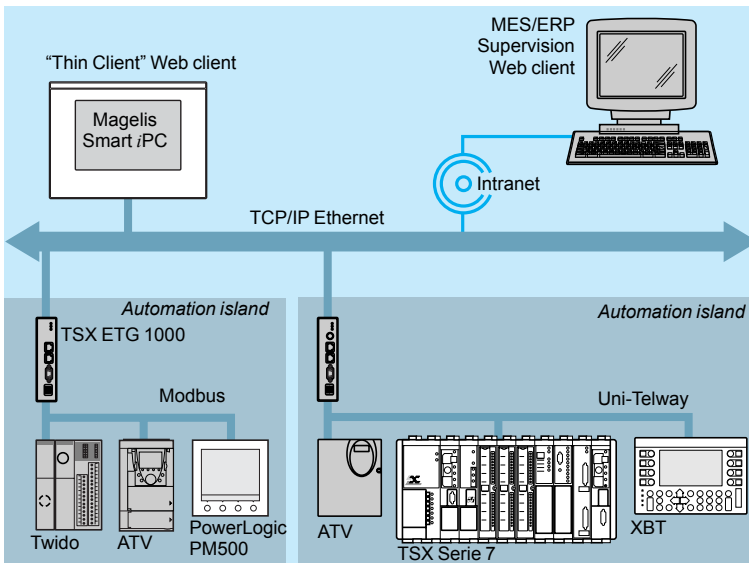
Two gateway modules are offered:

- TCP/IP – Modbus TSX ETG 1000 gateway
- TCP/IP – Uni-Telway TSX ETG 1010 gateway.

(1) RAS Remote Access Server

Application examples

Integration of serial devices (Modbus or Uni-Telway) in an Ethernet TCP/IP network infrastructure



TSX ETG 1000/1010 gateways provide a simple and low-cost means of integrating any existing Modbus serial RTU or Uni-Telway device, installation or automation island in an Ethernet TCP/IP network infrastructure. Each gateway is able to make the serial devices (Modbus or Uni-Telway) directly accessible to computer management (MES, ERP) or supervision applications in real-time.

The following serial devices can be used:

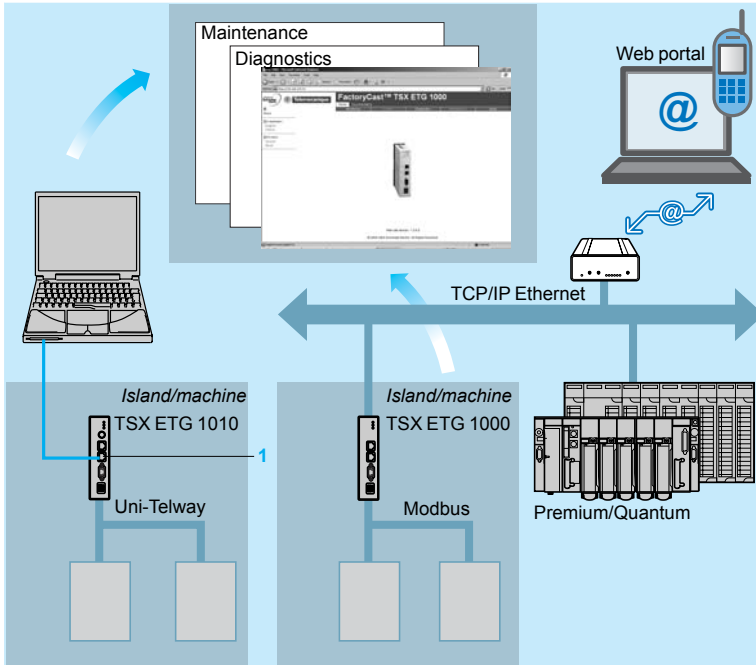
- On Modbus, with the TSX ETG 1000 gateway: Twido controllers, Compact/Momentum/Premium/Quantum PLCs, Altivar drives, Altistart motor starters, Magelis terminals or any other product compatible with the Modbus standard.
- On Uni-Telway, with the TSX ETG 1010 gateway: TSX Micro/Premium/TSX Series 7 PLCs, Altivar drives, Magelis terminals or any other product compatible with the Uni-Telway standard.

In addition, its customizable Web server, accessible from any PC equipped with an Internet browser, offers the following additional services:

- Device diagnostics (Modbus or Uni-Telway)
- Reading/writing of Modbus registers or Uni-Telway variables
- Alarm notification by e-mail
- Hosting of user-defined Web pages.

Application examples (continued)

Remote diagnostics and remote maintenance Web portal



The addition of the FactoryCast Gateway to any stand-alone machine or automation island creates a truly sophisticated maintenance portal, without any modification of Modbus or Uni-Telway serial devices.

This Web portal offers the following functions:

- Configurable Web server
- Alarm notification by e-mail
- Remote diagnostics and remote maintenance
- Remote monitoring and control of (Modbus or Uni-Telway) variables via predefined Web pages.

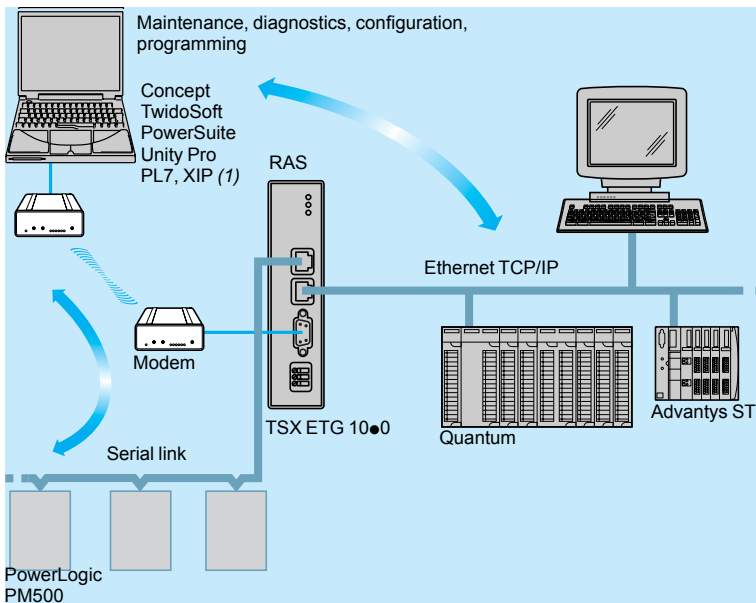
Any PC or "Thin Client" terminal (e.g., Magelis Smart iPC) equipped with an Internet browser can be used to access these services if it is connected:

- Directly to the TCP/IP 1 port on the gateway
- Remotely via the local network, Intranet, Internet, or via a modem link.

The Web server is fully customizable so that it can be adapted to the user's requirements. Both the hosting of Web pages and any other documents created by the user, and also alarm notification by e-mail mean that the user can access the essential parameters in a preventive manner.

From now on, each machine has its own built-in maintenance.

Remote access to Modbus/Uni-Telway devices via modem



TSX ETG 1000/1010 gateways integrate an RAS (*Remote Access Server*) function, which is compatible with all types of modem (RTC, GSM, radio modem, etc.), Intranet/VPN (*Virtual Private Network*) and Internet link.

They support:

- PPP (*Point to Point Protocol*), managing incoming and outgoing calls
- A routing function (IP router) providing transparent access to any device present on the Ethernet TCP/IP infrastructure.
- Secure access integrating an embedded filtering function for IP client addresses in order to control access with password protection (miniature firewall).

This type of connection is suitable for remote maintenance and remote diagnostics when there are a large number of sites to be monitored, spread over a wide geographical area.

In addition, it can be used to configure and program:

- Remote Modbus devices using Telemecanique brand software (Unity Pro, Concept, TwidoSoft, PowerSuite, etc.)
- Remote Uni-Telway devices using Telemecanique brand software (Unity Pro, PL7 Micro, PL7 Junior/Pro, etc.) and the XIP communication driver.

See page 48404/3 for consult **TSX ETG 1000/1010** product data sheet.



(1) XIP communication driver with Uni-Telway TSX ETG 1010 gateway