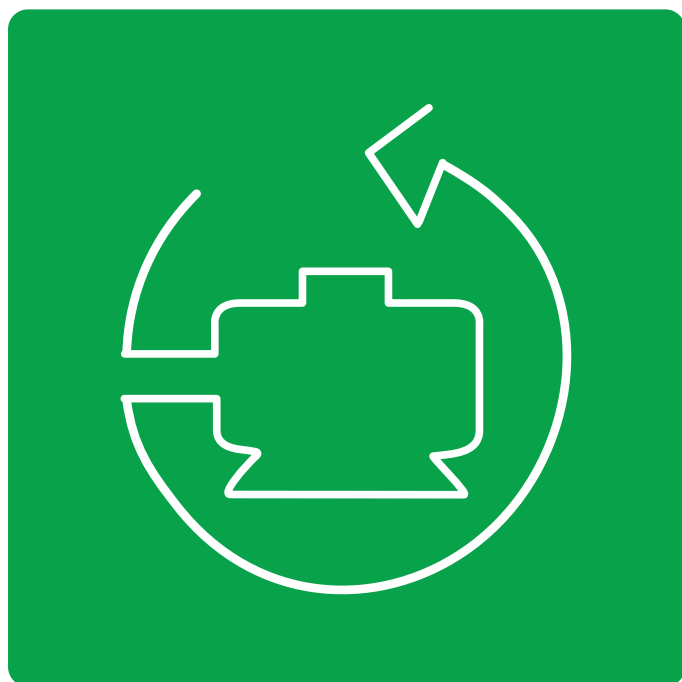


SoMove setup software

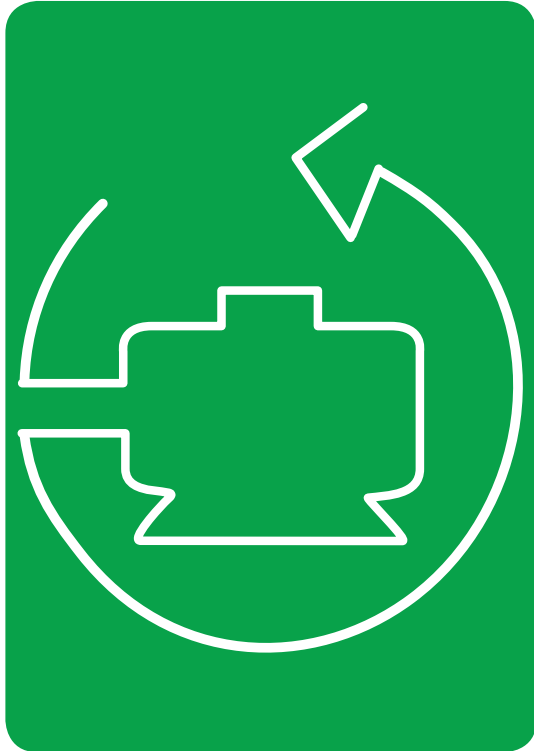
for Schneider Electric motor control devices

eCatalog

2014



- **Introduction.....4**
- **Functions5**
 - Setup in Disconnected Mode.....5
 - Setup in Connected Mode.....5
 - Maintenance5
 - User Interface.....6
 - Connections7
- **Selection Table.....8**
- **How to Download.....9**
- **Services & Support.....10**



Introduction

SoMove™ setup software is user-friendly software for PC designed for configuring the following Schneider Electric motor control devices:

- Altivar™ 12, Altivar 212, Altivar 312, Altivar 31, Altivar 32, Altivar 61, Altivar 71 and Altivar Lift drives
- Altistart™ 22 and Altistart 48 soft starters
- TeSys™ U starter-controllers
- TeSys T motor management system
- Lexium™ 32 servo drives
- Lexium 32i integrated servo drives

SoMove software incorporates various functions for the device setup phases, such as:

- Configuration preparation
- Start-up
- Maintenance

To facilitate setup and maintenance of devices, SoMove software can use a direct USB/RJ45 cable link or a Bluetooth® wireless link to connect to the motor control device and communicate directly to it.

SoMove software is also compatible with the Multi-Loader configuration tool. These tools can save a significant amount of time when loading, duplicating or editing configurations on a device.

The SoMove software download (available through the link below) includes:

1. the latest version of the SoMove software, and
2. the DTMs (Device Type Managers) associated with each device

Compatibility of SoMove software with specific devices

Device	Range	Version of software on the device
Variable speed drive	ATV12, ATV312, ATV32	≥ 1.0
	ATV212	≥ 5.1
	ATV31	≥ 1.1
	ATV61, ATV71	≥ 1.6
	ATV Lift	≥ 5.3
Soft starter	ATS22	≥ 1.0
	ATS48	≥ 1.5
Starter-controller	TeSys U	≥ 1.0
Motor management system	TeSys T	≥ 1.0
Servo drive	Lexium 32	≥ 1.0
Integrated servo drive	Lexium 32i	≥ 1.0

Environments

SoMove operates in the following PC environments and configurations:

- Microsoft Windows® 7 Professional (32-bit or 64-bit)
- Microsoft Windows® XP Professional SP3 (32-bit or 64-bit)
- Microsoft Windows® Vista Business SP2 (32-bit or 64-bit)
- Microsoft .NET Framework 3.5 SP1 (or higher)
- Pentium IV (or equivalent), 1 GHz, hard disk with 1 GB available space, 1 GB of RAM (minimum configuration)



Functions

Setup in disconnected mode

SoMove software has a genuine disconnected mode which provides access to the device parameters. This mode can be used to generate the device configuration. The configuration can be saved, printed and exported to office automation software.

SoMove software also checks the consistency of the parameters, validating the configurations created in disconnected mode.

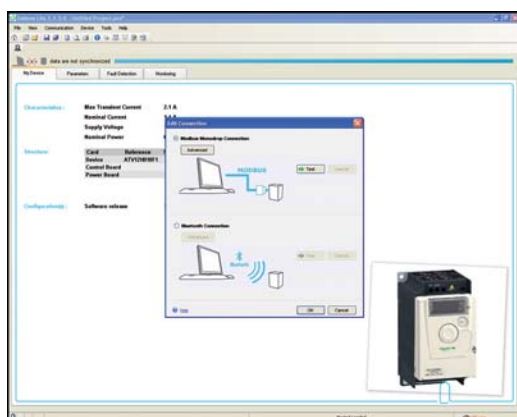
A large number of functions are available in disconnected mode, in particular:

- The device configuration software wizard
- The configuration comparison function
- Saving, copying, printing and creating configuration files for export to Multi-Loader or Microsoft Excel® tools, and sending configurations by e-mail

Setup in connected mode

When the PC is connected directly to the device or to the communication bus⁽¹⁾, SoMove software can be used for:

- Transferring the generated configuration onto the device
- Adjustment and monitoring, which includes such functions as:
 - The oscilloscope
 - Display of communication parameters
- Easy control via the control panel user interface
- Saving the final configuration

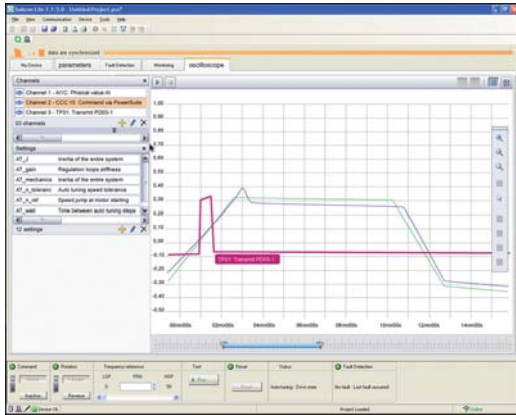


Maintenance

In order to simplify maintenance operations, SoMove software can be used to:

- Compare the configuration of a device currently being used with a configuration saved on the PC
- Transfer a configuration to a device
- Compare oscilloscope curves
- Save oscilloscope curves and alarm conditions

⁽¹⁾ Requires a specific connection accessory. For further information, please consult our Customer Care Center at 888-778-2733.



Functions (continued)

User interface

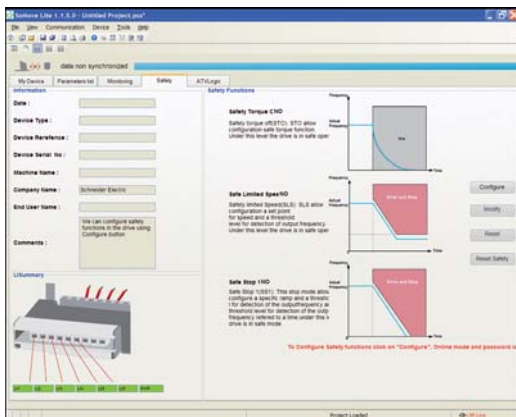
SoMove software provides fast, direct access to information on the device via five tabs:

- **My Device:** Displays the device information such as:
 - Device type
 - Part number
 - Software versions
 - Option cards, etc.
- **Parameters:** Displays the device adjustment parameters, shown in a table or in the form of diagrams
- **Faults:** Displays a list of the alarm conditions that may be encountered with the device, the fault log, and any detected current faults or alarms
- **Monitoring:** Provides a realtime display of the device status, its I/O, and the monitoring parameters. It is possible to create your own control panel by selecting your parameters and how they are to be represented.
- **Oscilloscope:** Provides a high-speed oscilloscope (for recording traces in the device) or low-speed oscilloscope (for recording traces in the software for devices that do not have an integrated oscilloscope)

Name	Unit	Current value	Default value	Min. value	Max. value
Motor type	Motor type	0.00	0.00	0.00	0.00
Motor power	W	0.00	0.00	0.00	0.00
Motor speed	rpm	0.00	0.00	0.00	0.00
Motor torque	Nm	0.00	0.00	0.00	0.00
Motor current	A	0.00	0.00	0.00	0.00
Motor temperature	°C	0.00	0.00	0.00	0.00
Motor position	°	0.00	0.00	0.00	0.00
Motor velocity	°/s	0.00	0.00	0.00	0.00
Motor acceleration	°/s²	0.00	0.00	0.00	0.00
Motor deceleration	°/s²	0.00	0.00	0.00	0.00
Motor stop time	s	0.00	0.00	0.00	0.00
Motor stop distance	m	0.00	0.00	0.00	0.00
Motor stop position	°	0.00	0.00	0.00	0.00
Motor stop velocity	°/s	0.00	0.00	0.00	0.00
Motor stop acceleration	°/s²	0.00	0.00	0.00	0.00
Motor stop deceleration	°/s²	0.00	0.00	0.00	0.00
Motor stop position	°	0.00	0.00	0.00	0.00
Motor stop velocity	°/s	0.00	0.00	0.00	0.00
Motor stop acceleration	°/s²	0.00	0.00	0.00	0.00
Motor stop deceleration	°/s²	0.00	0.00	0.00	0.00
Motor stop position	°	0.00	0.00	0.00	0.00
Motor stop velocity	°/s	0.00	0.00	0.00	0.00
Motor stop acceleration	°/s²	0.00	0.00	0.00	0.00
Motor stop deceleration	°/s²	0.00	0.00	0.00	0.00

SoMove's user interface automatically adapts to the specific configured device by offering additional tabs:

- **Safety:** For configuring the Safety functions on ATV32 variable speed drives and Lexium 32 servo drives. It can also be used to:
 - Display the I/O
 - Compile and print a report
- **ATVLogic:** For accessing the ATV32 drive's programmable function blocks. It can also be used to:
 - Develop a program and transfer it to the drive
 - Display and debug the program already on the drive
- **Auto-tuning:** For accessing the servo control settings for the three different operating modes of the Lexium 32 servo drive's auto-tuning function:
 - Automatic mode for quick setup, designed for simple applications
 - Semi-automatic mode for quick setup, with the option of optimizing the servo drive/servo motor combination (access to the mechanical and dynamic behaviour parameters)
 - Expert mode for optimizing the adjustment parameters, designed for complex applications





Connected mode via the **1** USB/RJ45 cable

Functions (continued)

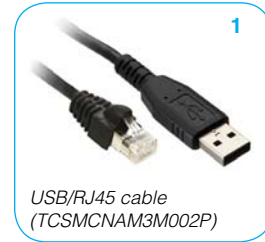
Connections

USB/RJ45 cable

A PC running SoMove software can be connected directly to the device via the USB port on the PC and the RJ45 connector on the device using the **1** USB/RJ45 cable.

This connection allows the SoMove software to run in connected mode to:

- Transfer configuration files to the device
- Adjust, control, and monitor the device



Bluetooth® wireless link

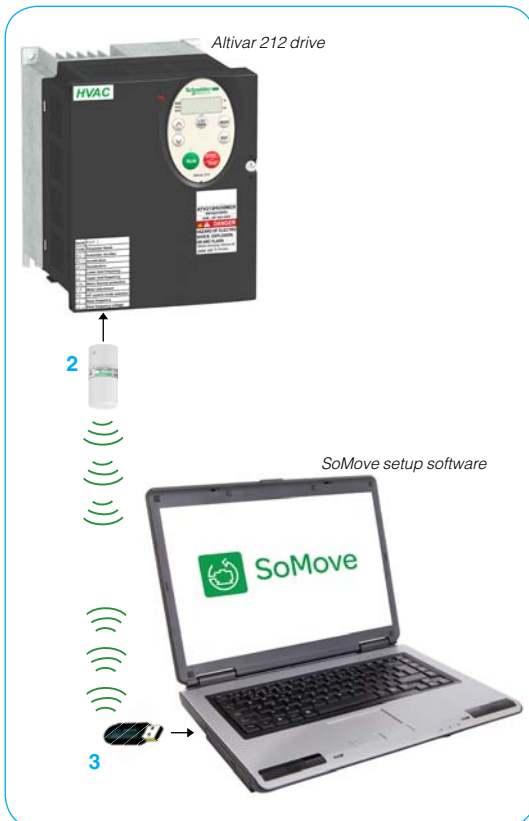
SoMove software can communicate via Bluetooth® wireless link with any Bluetooth® enabled device.

If the device is not Bluetooth® enabled, use the **2** Modbus-Bluetooth® adaptor. This adaptor is connected to the terminal port or the Modbus network port on the device. It has a 65 ft (20 m) range (class 2).

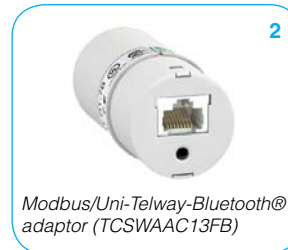
If the PC does not have Bluetooth® technology, use the **3** USB-Bluetooth® adaptor.

This connection allows the SoMove software to run in connected mode to:

- Transfer configuration files to the device
- Adjust, control, and monitor the device



Connected mode via the **2** Modbus-Bluetooth® adaptor and the **3** USB-Bluetooth® adaptor



Multi-Loader configuration tool

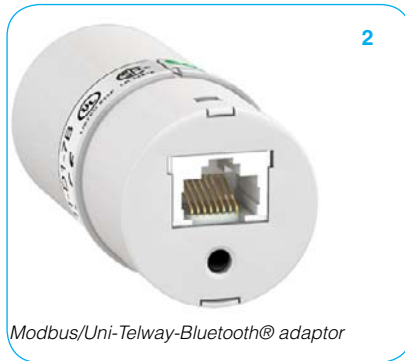
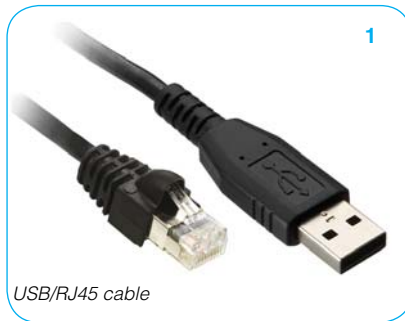
Use the **4** Multi-Loader configuration tool for copying a configuration on a PC or motor control device and duplicating it onto another device.

Supplied with the tool:

- 1 cordset equipped with 2 RJ45 connectors
- 1 cordset equipped with USB type A connector and a USB Mini-B type connector
- 1 x 2 GB SD memory card
- 1 female/female RJ45 adaptor
- 4 AA/LR6 1.5 V batteries



Note: Altivar 212 parameter files created using SoMove cannot be directly transferred to the Multi-Loader tool.



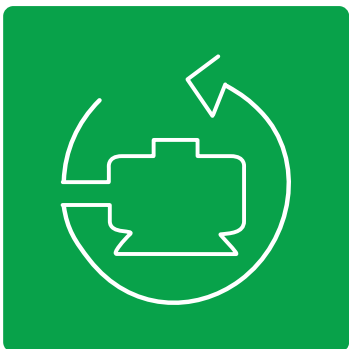
Selection table

Description	Part number	Weight	
		lbs	kg
SoMove setup software Includes: <ul style="list-style-type: none"> SoMove setup software for PC in English, French, German, Italian, Spanish and Chinese DTMs (Device Type Managers) and technical documentation for variable speed drives, starters and servo motors 	Free Download		
USB/RJ45 cable 1 Used to connect a PC to the device. Cable is 8 ft (2.5 m) long and has a USB connector (PC end) and an RJ45 connector (device end).	TCSMCNAM3M002P	0.1	0.1
Modbus/Uni-Telway-Bluetooth[®] adaptor 2 Used to enable any non-Bluetooth [®] device to communicate via Bluetooth [®] wireless link ⁽¹⁾ . Includes: <ul style="list-style-type: none"> 1 Bluetooth[®] adaptor (range 20 m, class 2) with an RJ45 connector For SoMove: 1 x 0.1 m cordset with 2 x RJ45 connectors For TwidoSuite: 1 x 0.1 m cordset with 1 RJ45 connector and 1 mini DIN connector 	TCSWAAC13FB	0.1	0.1
USB-Bluetooth[®] adaptor for PC 3 Used to enable any non-Bluetooth [®] PC to communicate via Bluetooth [®] wireless link ⁽²⁾ . It connects to a USB port on the PC. Range: 33 ft (10 m), class 2	VW3A8115	0.6	0.3
Multi-Loader tool 4 For copying a configuration on a PC or drive and duplicating it on another drive. Includes: <ul style="list-style-type: none"> 1 cordset equipped with 2 RJ45 connectors 1 cordset equipped with USB type A connector and a USB Mini-B type connector 1 x 2 GB SD memory card 1 female/female RJ45 adaptor 4 AA/LR6 1.5 V batteries 	VW3A8121	2.0	0.9

(1) Available only for the following devices:
 - ATV 12, ATV 312, ATV 31, ATV 61 and ATV 71 drives
 - ATS 22 and ATS 48 soft starters
 - TeSys U starter-controllers
 - TeSys T motor management system
 - Lexium 32 servo drives
 (2) Check the manufacturer's specification.

Drivers for USB/RJ45 cable

Listed to the right are the links to the latest drivers for the USB/RJ45 cable. Install these drivers to your computer to create proper communication between the two devices connected by the USB/RJ45 cable.



How to Download

Downloading SoMove software

Schneider Electric recommends using a download manager to assist with proper installation of the SoMove software to your computer. Download managers help by offering more download options and speeding up the process of downloading large files. Download managers are not required for the download of the SoMove software.

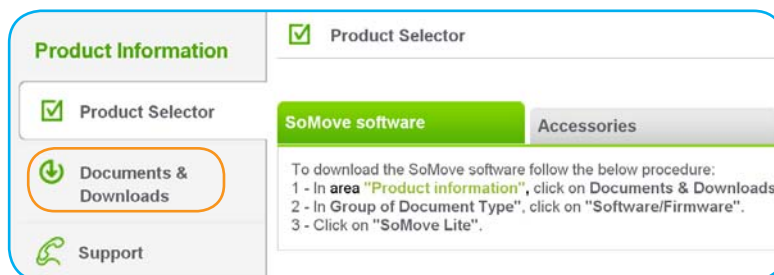
Before downloading the SoMove software, make sure that your computer meets these **system requirements**:

- Microsoft Windows® 7 Professional (32-bit or 64-bit)
- Microsoft Windows® XP Professional SP3 (32-bit or 64-bit)
- Microsoft Windows® Vista Business SP2 (32-bit or 64-bit)
- Microsoft .NET Framework 3.5 SP1 (or higher)
- Pentium IV (or equivalent), 1 GHz, hard disk with 1 GB available space, 1 GB of RAM (minimum configuration)

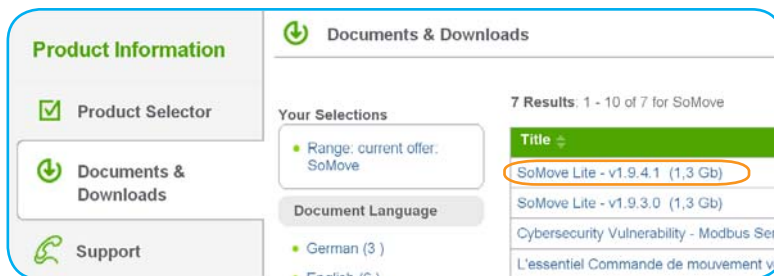
The following steps and screenshots will assist you in downloading SoMove properly:

Step 1 Click on the SoMove Software Free Download button above to access the SoMove website

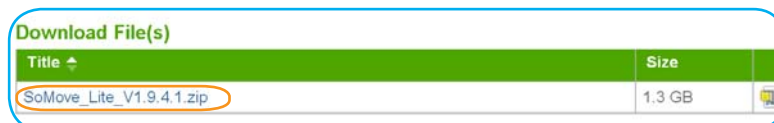
Step 2 Under "Product Information", click Documents & Downloads



Step 3 Then click on the latest version of SoMove Lite



Step 4 Under the "Download Files" section, click the link to download SoMove



The SoMove software files will then begin to download. Once download is complete:

- Unzip the SoMove folder and extract the files to your hard drive
- Open the program and follow the steps to install SoMove

You will be prompted to register your SoMove software. Without registering you will only be able to use the SoMove software for a 4-day period. The simple registration process requires only general contact information. It is used to enhance Schneider Electric's service to SoMove users.

If there is any issue during this process, please call our Drive Product Support Group toll free at **1-888-778-2733** or send them an email at **drive.products.support@us.schneider-electric.com**.



Solutions for every stage of your equipment's life cycle

Schneider Electric™ provides services far beyond meeting your immediate needs for application or equipment repair. We take a long-term, holistic approach to determine your facility and operational needs and develop a strategy for improving the performance of your people, systems, and processes.

Schneider Electric provides services from system design and consulting, to maintenance support, modernization of your installation, and project delivery. Schneider Electric provides the people, tools, and processes to help maximize your business's infrastructure.

Our expertise enables you to cut costs, reduce energy consumption, and keep your systems up and running through routine maintenance, added enhancements, and migrations to new state-of-the-art functionality.

> Start-up and commissioning

Expert installation support to provide assistance in the start-up of your new system. Service includes a comprehensive power-up and diagnostic check on system components to minimize risk and optimize operation.

> Technical training

Training offered on-site, off-site, or online for Schneider Electric automation products taught by professional instructors with up-to-date knowledge of our latest hardware and software.

> Remote technical support

Comprehensive online and phone support from experts specially trained on Schneider Electric drive products, helping to reduce downtime and costs and optimize your system's life cycle.

> On-site technical support

Support service to perform regular maintenance, upgrades, and conversion assistance, small application and programming assistance, on-the-job training, equipment repair, support and troubleshooting, even in emergency situations.

> Preventative maintenance

Maintenance programs to scan for, and proactively detect, potential issues or problems with your automation system to help you avoid the costs of unscheduled downtime and short equipment service life. Also serves to extend the life of your installed base by using our services to properly maintain your equipment.

> Industrial repair services

Repair capabilities for over 400,000 part numbers from more than 2,500 manufacturers at our Greensboro, NC repair facility. Repair is available for both Schneider Electric and non-Schneider Electric equipment.

> Spare parts management

Save money and reduce downtime through our parts management program. An on-site assessment is performed to determine parts and inventory levels needed to ensure proper system operation and reduce downtime and inventory costs.

> Migration and modernization

Realize the productivity benefits of the latest Schneider Electric automation technology by using our assessment tools to identify and implement replacement of your legacy automation products, regardless of brand. We make extensive use of existing hardware and wiring for a cost-effective solution with minimal downtime.

> Software renewals

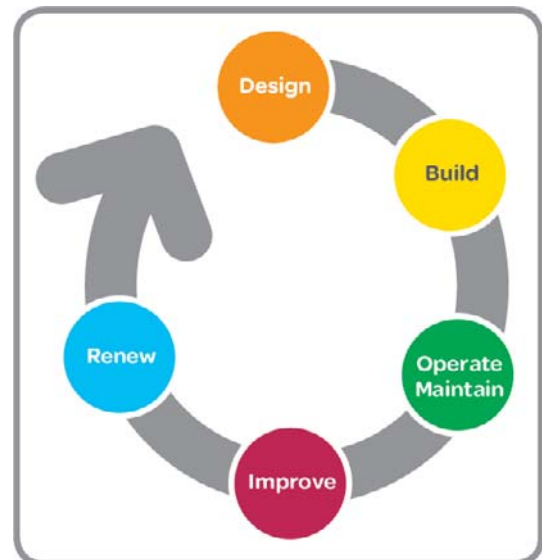
Access the latest software, firmware, and custom options to ensure you always have the latest functionality available to optimize your system's life cycle.

> Extended warranty

Extend your Schneider Electric standard manufacturer warranty from one year to five years. Protection plans are tailored to your needs reducing costs and out-of-service time.

> When it comes to your automation equipment, we can help you

- Increase productivity
- Improve reliability and safety
- Mitigate risk and limit downtime
- Keep equipment up to date
- Extend the life of your installed base
- Cut costs and increase savings
- Improve your return on investment



Talk to someone you can trust

The Altivar family of variable speed AC drives and the Altistart family of soft starts presents the most advanced and user-friendly solutions in the marketplace. Featuring proprietary motor control algorithms to achieve optimal reaction times and complete scalability to match your application requirements for speed, size, and protection, the complete line of Altivar and Altistart products provides the flexibility and performance to:

- Meet the needs of a broad range of industries, including HVAC, pump, material handling, hoisting, packaging and many more.
- Reduce your energy costs using proprietary energy-saving technologies available only from Schneider Electric.
- Improve your up-time by simplifying installation, commissioning and maintenance by providing advanced diagnostics, industry-leading voltage ride thru capability and seismic qualified products.

We also work with you to deliver the benefits of a global service and support of a global service and support organization to further increase the value of working with Schneider Electric. Our product specialists, industry experts, distributors, partners, and the countless other members of the Schneider Electric family are dedicated to helping you make the most of your energy everyday. Contact your local sales representative today to learn how Schneider Electric can improve operational performance and help your business to achieve a competitive advantage. Or visit www.schneider-electric.com

> Drive Product Support Group

For support and assistance, contact the Drive Product Support Group. The Drive Product Support Group is staffed from 8:00 am until 8:00 pm Eastern time to assist with product selection, start-up, and diagnosis of product or application problems.

EMERGENCY Technical phone support is available 24 hours a day, 365 days a year.

Toll Free **1-888-778-2733**

E-mail **drive.products.support@us.schneider-electric.com**

Fax **919-217-6508**

> Schneider Electric Service (On-Site)

The Schneider Electric Services division is committed to providing quality on-site service that consistently meets customer expectations. Services responds to your requests, seven days a week, 24 hours a day.

Phone **1-888-778-2733**

> Schneider Electric Customer Training

Schneider Electric offers a variety of instructor-led skill enhancing and technical product training programs for customers. For a complete list of drives/soft start training with dates, locations, and pricing please call:

Phone **978-975-9306**

Fax **978-975-2821**

> Customer Care Center

(Assist with stock checks, assist with claims, and assist with order management issues)

To provide additional support, Schneider Electric has rolled out new Technical Service Representatives in local offices which have the strongest needs.

Due to time zone changes and different time operation requirements business operation times vary.

Phone **888-778-2733**

Fax **888-329-9773**



Schneider Electric USA, Inc.

Schneider Electric USA, Inc.
8001 Knightdale Blvd.
Knightdale, NC 27545

USA Customer Care Center
Tel: 888-778-2733

The information provided in this documentation contains general descriptions and/or technical characteristics of the performance of the products contained herein. This documentation is not intended as a substitute for and is not to be used for determining suitability or reliability of these products for specific user applications. It is the duty of any such user or integrator to perform the appropriate and complete risk analysis, evaluation and testing of the products with respect to the relevant specific application or use thereof. Neither Schneider Electric nor any of its affiliates or subsidiaries shall be responsible or liable for misuse of the information contained herein.

© 2014 Schneider Electric. All Rights Reserved. Schneider Electric, SoMove, Altivar, Altistart, TeSys, Lexium, and Make the most of your energy are trademarks owned by Schneider Electric Industries SAS or its affiliated companies. All other trademarks are the property of their respective owners.

Design: Schneider Electric
Photos: Schneider Electric