

OptiLine 70 Poles

Product Overview Catalogue

CLIPSAL[®]

by Schneider Electric

Flexibility from floor to ceiling

clipsal.com

CABLE MANAGEMENT

OptiLine 70 Poles

Overview

Established in 1920, Clipsal by Schneider Electric is Australia's number one brand of electrical products, accessories and solutions for the residential, commercial, industrial, data, home control and energy management markets. Clipsal has evolved and grown from its Adelaide base with great success by supporting the local economy and providing products manufactured at multiple sites across Australia.

Clipsal is an electrical industry leader, dedicated to supplying you with the most innovative and sustainable solutions available. As part of Schneider Electric, the global specialist in energy management, Clipsal provides a total electrical solution for any project or application.

OptiLine 70

When something is said to be flexible, it can easily be modified to respond to a change in circumstances. The OptiLine 70 universal installation system is a truly flexible electrical solution. This completely versatile system can deliver reliable access to power, data and telephone — quickly. Not only is this system easy to install or upgrade, it also has the flexibility to suit any office floor plan.

The range of products includes OptiLine 70 Trunking, Poles and Posts. These products can provide integrated power, data and telephone delivery solutions for ceilings, walls and desks, and are designed to fulfill the most stringent demands for function, design, convenience and safety.

Contents

- Page 4
Product Information and Features



- Page 8
Poles and Accessories



- Page 18
Technical and Material Information

OptiLine 70 Poles

Product Information and Features



Flexibility from Floor to Ceiling

OptiLine 70 Poles are fed from the ceiling and deliver access to power, data and telephone on all types of floors, including, conference rooms and commercial buildings. The 70mm front opening makes these poles suitable for Clipsal 2000 Series™, Classic C2000 Series™ and Saturn™ Switches and Outlets.

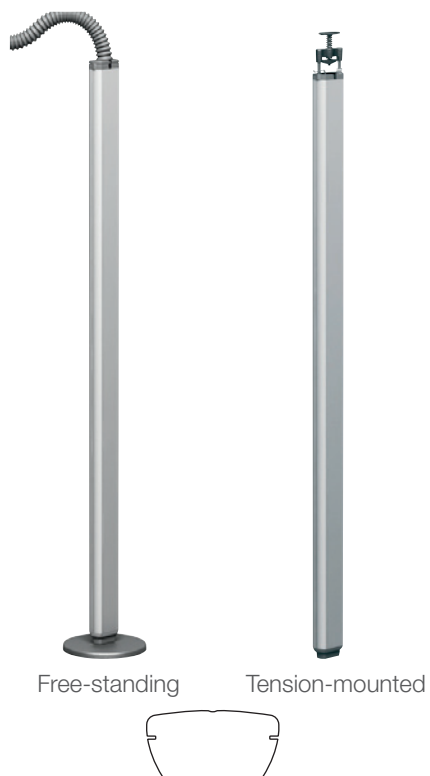
The compact and rounded-edge design of the OptiLine 70 Poles, softens their appearance. The poles are available in free-standing or tension-mounted designs, with one and two-sided versions, and all poles are made of natural anodised aluminium – providing them a high-quality finish. Designed for any commercial building environment, the free-standing poles are mounted on a floor footing and are able to be moved within a radius of 1.5m from the connection point in the ceiling. These movable poles come with sturdy rectangular or rounded footings, and both are made from sand-cast iron and painted grey. The rectangular foot allows poles to be installed back-to-back or against a wall.

The spring-loaded and adjustable ceiling fixing (for tension-mounted poles) can be fitted easily without using tools. Also included with each tension-mounted pole, is a self-sticking ceiling frame to cover the edge of the hole in a false ceiling. A self-locking ceiling fixing has a 400mm working range, to provide easy installation and superior performance. It is designed so that it will not interfere with the wiring devices and can be adjusted to suit a variety of ceiling thicknesses.

Each OptiLine 70 Pole is made from aluminium components – many of which are die-cast – providing additional strength to these high-quality units.

Product Information

OptiLine 70 Poles one-sided



OptiLine 70 Poles two-sided



OptiLine 70 Poles

Product Information and Features

Product Features

Design, finish and quality (1)

- Aluminium construction
- Stable and sturdy design
- Reliable function
- High-quality finish



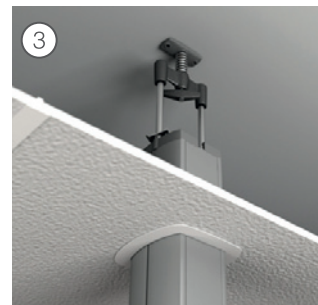
Feet (2)

- Stable
- Rectangular or rounded options
- Sand-cast iron and painted grey
- Rectangular foot allows back-to-back installation or against a wall



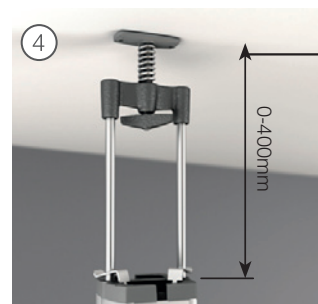
Ceiling frame (3)

- Self-sticking and adjustable versions
- Self-sticking version covers edge of hole in false ceiling (when using tension-mounted pole)
- Adjustable version covers edge of hole and leads flexible conduit through false ceiling
- Quick and easy to mount



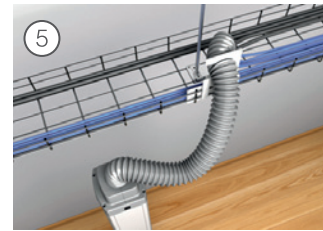
Ceiling fixing (4)

- Spring-loaded and adjustable
- Self-locking adjustment
- 400mm working range
- Mount without tools



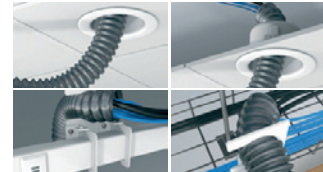
Free-standing fit-off (5)

- Accessories for all mounting options
- Includes adjustable ceiling frame, which can be adjusted to different ceiling thicknesses



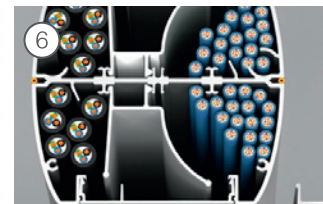
Cable separation (6)

- Partition profile provides neat and secure cable segregation
- Ensures physical separation of data and power cables



Stop end (7)

- Attractive die-cast aluminium stop end
- Smooth edges cover the sharp cut of the base profile
- Prevents damage to cables



Screw slots (8)

- Slots on both sides of each pole
- Decorative colour stripes to complement any office interior (optional)
- Provision for mounting additional products like spotlights, small shelves, etc.



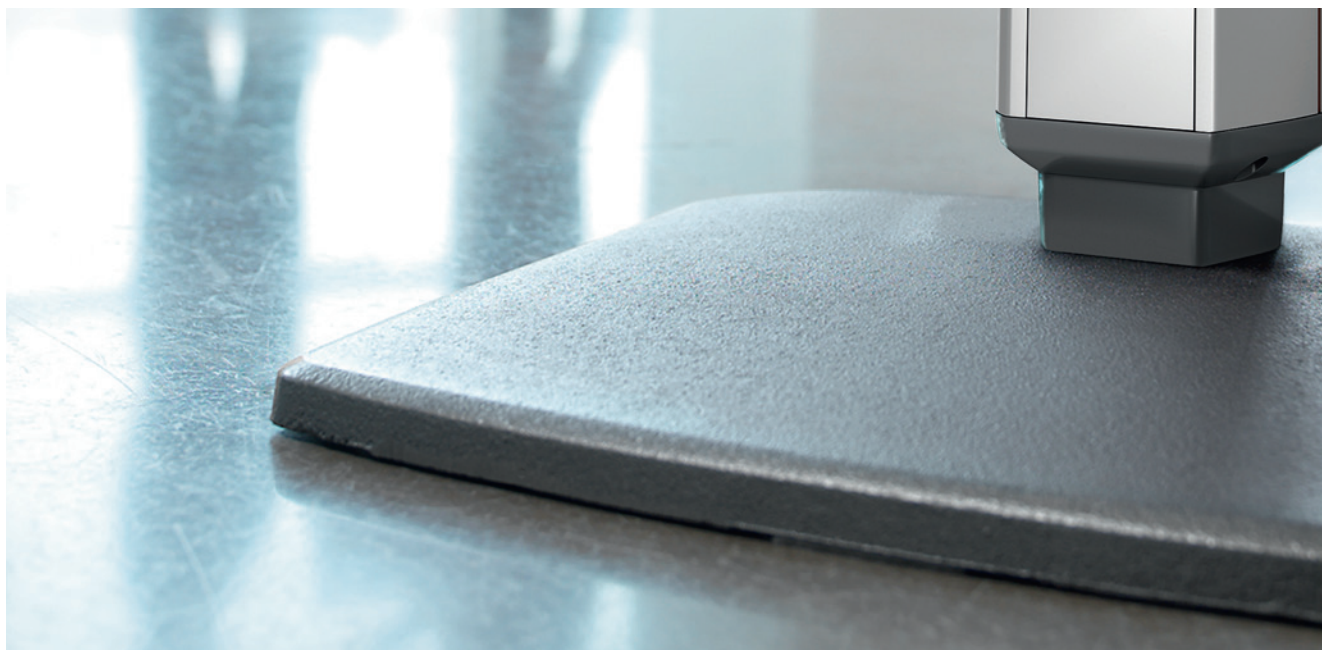
Earthing (9)

- Accessible Earthing rails (in base profile and front cover)
- Fully-assembled Earthing kit (included)
- Quick and easy to mount
- Screwless mounting



OptiLine 70 Poles

Poles and Accessories




Designed for Any Office Floor Plan


These versatile OptiLine 70 Poles come with a range of different accessories, including: feet, ceiling and floor fixings, self-sticking ceiling frames, conduits, Earthing devices, floor feeders and shrouds. Any, or all of these high-quality accessories will assist in delivering convenient access to power, data and telephone to any office floor plan.

OptiLine 70 Poles Selection Guide

OptiLine 70 Poles (tension-mounted)

		Colour	Height	Cat. No.	Ceiling frame	Cable tray fixing
	 One-sided	Anodised	3170mm–3570mm 4170mm–4570mm 5170mm–5570mm 6170mm–6570mm	ISM20500 ISM20501 ISM20502 ISM20503	ISM20550	ISM20554
	 Two-sided	Anodised	3170mm–3570 mm 4170mm–4570mm 5170mm–5570mm 6170mm–6570mm	ISM20505 ISM20506 ISM20507 ISM20508	ISM20551	ISM20553

OptiLine 70 Poles (free-standing)

		Colour	Height	Cat. No.	Foot (round)	Foot (rect.)	Ceiling frame	Ceiling fixing	Cable tray fixing
	 One-sided	Anodised	2385mm + 2000mm	ISM20520	ISM20808	ISM20809	ISM20812	ISM20816	ISM20813
	 Two-sided	Anodised	2420mm + 2000mm	ISM20521	ISM20808	ISM20809	ISM20812	ISM20816	ISM20813

OptiLine 70 Poles

Poles and Accessories

OptiLine 70 Poles (Tension-Mounted)

Empty pole for tension-mounting between floor and ceiling, one-sided or two-sided. Includes: front cover, ceiling fixing, ceiling frame, stop end, strain relief, floor fixing, floor fixing plate (zinc), Earthing kit and mounting instructions. Adjustable working range for ceiling fixing (400mm). Wiring devices can be placed along the whole pole length using a Power/Data Shroud for Clipsal 2000 Series, Classic C2000 Series and Saturn Power/Data/Telephone Outlets. Power/Data Shroud includes Earth wire and mounting screws. Supplied without wiring devices and cables.

Material: Aluminium, natural anodised.

Tension-mounted poles (one-sided)

Cat. No.	Height	Width	Depth	Colour	Pack qty
ISM20500	3170mm–3570mm	120mm	61mm	Anodised	1 Pce
ISM20501	4170mm–4570mm	120mm	61mm	Anodised	1 Pce
ISM20502	5170mm–5570mm	120mm	61mm	Anodised	1 Pce
ISM20503	6170mm–6570mm	120mm	61mm	Anodised	1 Pce

Tension-mounted poles (two-sided)

Cat. No.	Height	Width	Depth	Colour	Pack qty
ISM20505	3170mm–3570mm	118mm	120mm	Anodised	1 Pce
ISM20506	4170mm–4570mm	118mm	120mm	Anodised	1 Pce
ISM20507	5170mm–5570mm	118mm	120mm	Anodised	1 Pce
ISM20508	6170mm–6570mm	118mm	120mm	Anodised	1 Pce



ISM20500



ISM20505

OptiLine 70 Poles Floor Fixing for Tension-Mounted Poles, with Slot for Floor Feeder

One or two-sided tension-mounted poles can be fixed to the floor by screws, with slot for connection of floor feeder 18mm x 75mm or 18mm x 91mm, and gasket ring (included).

Material: Aluminium, powder coated.

Floor fixing for tension-mounted poles, with slot for floor feeder

Cat. No.	Height	Width	Depth	Colour	Pack Qty
ISM20650	45mm	153mm	100mm	Grey RAL 9007	1 Pce
ISM20651	45mm	154mm	164mm	Grey RAL 9007	1 Pce
ISM20652	45mm	153mm	100mm	Grey RAL 9007	1 Pce
ISM20653	45mm	154mm	164mm	Grey RAL 9007	1 Pce



ISM20650



ISM20651



ISM20652



ISM20653

Description	
ISM20650	For one-sided pole and 18mm x 91mm aluminium floor feeder
ISM20651	For two-sided pole and 18mm x 91mm aluminium floor feeder
ISM20652	For one-sided pole and 18mm x 75mm PVC/aluminium floor feeder
ISM20653	For two-sided pole and 18mm x 75mm PVC/aluminium floor feeder

OptiLine 70 Poles (Free-Standing)

Empty, free-standing and movable pole, one-sided or two-sided. Includes: front cover, flexible conduit with adaptor, strain relief, Earthing kit and mounting instructions. Length of flexible conduit is 2m, with a play radius of 1.5m from the connection point in the ceiling. Wiring devices can be placed along the whole pole length using a Power/Data Shroud for Clipsal 2000 Series, Classic C2000 Series and Saturn Power/Data/Telephone Outlets. Power/Data Shroud includes Earth wire and mounting screws. Foot to be ordered separately.

Material: Aluminium, natural anodised.

Free-standing (one-sided)

Cat. No.	Height	Width	Depth	Colour	Pack qty
ISM20520	2385mm–2000mm	120mm	61mm	Anodised	1 Pce

Free-standing (two-sided)

Cat. No.	Height	Width	Depth	Colour	Pack qty
ISM20521	2420mm–2000mm	120mm	118mm	Anodised	1 Pce



OptiLine Foot for Free-Standing Poles (rectangular)

Rectangular foot for free-standing, movable poles; to be fixed to the bottom plate by means of two M6 bolts (included). The foot is provided with a steel clamp that can be unfolded for extra support. When not in use, the clamp lies protected in a recess underneath the foot. Specifically suited in applications close to the wall or when two poles are positioned back to back.

Material: Cast iron, painted grey.

Foot for free-standing poles (rectangular)

Cat. No.	Height	Width	Depth	Colour	Pack qty
ISM20809	33mm	250mm	346mm	Anodised	1 Pce



OptiLine Foot for Free-Standing Poles (round)

Round foot for free-standing, movable poles; to be fixed to the bottom plate of the pole by means of two M6 bolts (included). Suitable for one and two-sided poles.

Material: Cast iron, painted grey.

Foot for free-standing poles (round)

Cat. No.	Height	Diameter	Colour	Pack qty
ISM20808	29mm	Ø317mm	Anodised	1 Pce



OptiLine 70 Poles

Poles and Accessories

OptiLine 70 Poles Ceiling Frame (Self-Sticking)

Ceiling frame for one or two-sided poles, or for Ø65mm profile. Covers the edge of the hole in a false ceiling. Self-sticking.

Material: PS (polystyrene).

Ceiling frame (self-sticking)

Cat. No.	Description	Height	Width	Depth	Colour	Pack qty
ISM20550	Ceiling frame for one-sided pole	1mm	111mm	170mm	White	1 Pce
ISM20551	Ceiling frame for two-sided pole	1mm	170mm	167mm	White	1 Pce
ISM20552	Ceiling frame for Ø65mm pole	1mm	Ø115mm			1 Pce



ISM20550



ISM20551



ISM20552

OptiLine Ceiling Frame (Adjustable)

Ceiling frame intended to lead flexible conduit through false ceiling. To be mounted in circular hole, Ø125mm, by using three clamps (included). Also included, a slotted plastic plate to be used to lock the flexible conduit, which is fixed by cable ties. The plate can also be used as a drill template for entrance hole Ø125mm.

Material: PC/ABS.

Ceiling frame (adjustable)

Cat. No.	Height	Diameter	Depth	Colour	Pack qty
ISM20812	89mm	Ø161mm	1mm	White RAL 9010	1 Pce



ISM20812

OptiLine Ceiling Fixing

Ceiling fixing intended to connect flexible conduit to ceiling or wall.
Fixings not included.

Material: Aluminium, powder coated.

Ceiling fixing

Cat. No.	Height	Width	Depth	Colour	Pack qty
ISM20816	50mm	156mm	90mm	White RAL 9010	1 Pce



ISM20816

OptiLine Cable Tray Fixing

Cable tray fixing (including fixing material) intended to connect one and two-sided poles to cable tray or cable ladder. Allows a flexible connection of the pole in various directions.

Material: Steel, powder coated.

Cable tray fixing (one or two-sided pole)

Cat. No.	Height	Width	Depth	Colour	Pack qty
ISM20553	75mm	72mm	126mm	White RAL 9010	1 Pce



ISM20553

Cable tray fixing (including fixing material) intended to connect a Ø65mm pole to cable tray or cable ladder. Allows a flexible connection of the pole in various directions.

Material: Steel, powder coated.

Cable tray fixing Ø65mm

Cat. No.	Height	Diameter	Depth	Colour	Pack qty
ISM20554	75mm	Ø72mm	1mm	White RAL 9010	1 Pce



ISM20554

Cable tray fixing (including fixing material) intended to connect flexible conduit to cable tray.

Material: Steel, powder coated.

Cable tray fixing

Cat. No.	Height	Width	Depth	Colour	Pack qty
ISM20813	100mm	15mm	70mm	White RAL 9010	1 Pce



ISM20813

OptiLine Busbar Fixing

Busbar fixing for Ø55mm conduits, used to connect flexible conduit to busbar trunking.

Material: Steel, powder coated.

Busbar fixing

Cat. No.	Height	Width	Depth	Colour	Pack qty
ISM20815	105mm	90mm	70mm	White RAL 9010	1 Pce



ISM20815

OptiLine 70 Poles

Poles and Accessories

OptiLine 70 Front Cover

Front cover (with Earthing slots) to be snapped into 70mm front openings. Supplied with protective foil, in lengths of 2m.

Material: Aluminium, natural anodised.

Front cover

Cat. No.	Height	Width	Depth	Colour	Pack Qty
ISM11950	2000mm	13mm	71mm	Anodised	12 Pce



OptiLine 70 Partition Profile

Partition profile of halogen-free material with two partition walls. Mounted in internal fixing rails of one and two-sided poles, for the separation of power and low voltage cables.

Material: ABS.

Partition profile

Cat. No.	Height	Width	Depth	Colour	Pack qty
ISM20555	500mm	49mm	50mm	White	10 Pce



OptiLine 70 Power/Data Shroud

Mounting, Earthing and shroud kit for fixing Clipsal 2000 Series, Classic C2000 Series and Saturn Power/Data/Telephone Outlets to the poles. Kit is screwed into the rails (within the pole) and the Clipsal Outlet is screwed onto the front — clamping the outlet and shroud in place. Includes spade lug, Earth wire and mounting screws.

Material:

Power/data shroud

Cat. No.	Height	Width	Depth	Colour	Pack qty
MDE0LSPTD	115mm	63mm	47mm	Galvanised	1 Pce



OptiLine Decorative Stripe

Decorative stripe to be fitted in the slots along the sides of one and two-sided poles.
Supplied in lengths of 5m.

Material: Silicone rubber.

Decorative stripe

Cat. No.	Height	Diameter	Colour	Pack qty
ISM200822	5000mm	Ø3.5mm	Grey	1 Pce
ISM200823	5000mm	Ø3.5mm	White RAL 9010	1 Pce
ISM200824	5000mm	Ø3.5mm	Orange	1 Pce



ISM200822



ISM200823



ISM200824

OptiLine 70 Poles

Poles and Accessories

OptiLine Earthing Clamp

Earthing clamp to be used for bonding of front cover, base profile and accessories to Earth.

Material: Steel.

Earthing clamp

Cat. No.	Height	Width	Depth	Colour	Pack qty
ISM10952	9mm	9mm	9mm	-	20 Pce



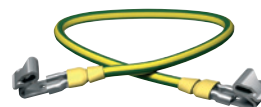
ISM10952

OptiLine Earthing Kit

Kit including Earth wire with flat pin connectors and Earthing clamps. To be used to connect the front cover to the base profile.

Earthing kit

Cat. No.	Length	Colour	Pack qty
ISM10953	200mm	Yellow/green	10 Pce
ISM10954	300mm	Yellow/green	10 Pce



ISM10953

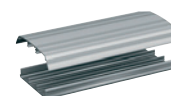
OptiLine Aluminium Floor Feeder

Floor feeder made up by a three-compartment base profile and cover, supplied in lengths of 2.5m. The base profile has punched holes to simplify mounting, and screw slots for Earth connection. Can be used as a separate item or in combination with a pole with slotted floor fixing for aluminium floor feeder. Meets load requirements according to VDE 0634 (750N/50mm²).

Material: Aluminium, natural anodised.

Aluminium floor feeder (2.5m)

Cat. No.	Height	Width	Depth	Colour	Pack qty
ISM20660	18mm	91mm	2500mm	Anodised	1Pce



ISM20660

Floor feeder made up by a three-compartment base profile and cover, supplied in lengths of 2m. To be used for feeding along the floor to a pole provided with a slotted floor fixing for 18mm x 75mm floor feeder.

Material: Aluminium, natural anodised.

Aluminium floor feeder (2m)

Cat. No.	Height	Width	Depth	Colour	Pack qty
ISM20857	18mm	75mm	2000mm	Anodised	4 Pce



ISM20857

OptiLine PVC Floor Feeder

Floor feeder made up by a three-compartment base profile and cover, supplied in lengths of 2m. To be used for feeding along the floor to a pole provided with a slotted floor fixing for 18mm x 75mm floor feeder.

Material: PVC.

PVC floor feeder

Cat. No.	Height	Width	Depth	Colour	Pack qty
ISM20817	18mm	75mm	2000mm	Grey RAL 7030	14 Pce



ISM20817

OptiLine Floor Feeder Jointing Piece

Floor feeder jointing piece to cover joints between PVC floor feeder sections.

Material: PVC.

Floor feeder jointing piece

Cat. No.	Height	Width	Depth	Colour	Pack qty
ISM20818	20mm	50mm	78mm	Grey RAL 7030	10 Pce



ISM20818

OptiLine Corner Feeder Piece

Corner feeder piece to be used in 90° corners between PVC floor feeder sections.

Material: PVC.

Corner feeder piece

Cat. No.	Height	Width	Depth	Colour	Pack qty
ISM20819	20mm	120mm	120mm	Grey RAL 7030	10 Pce



ISM20819

OptiLine 70 Poles

Technical and Material Information

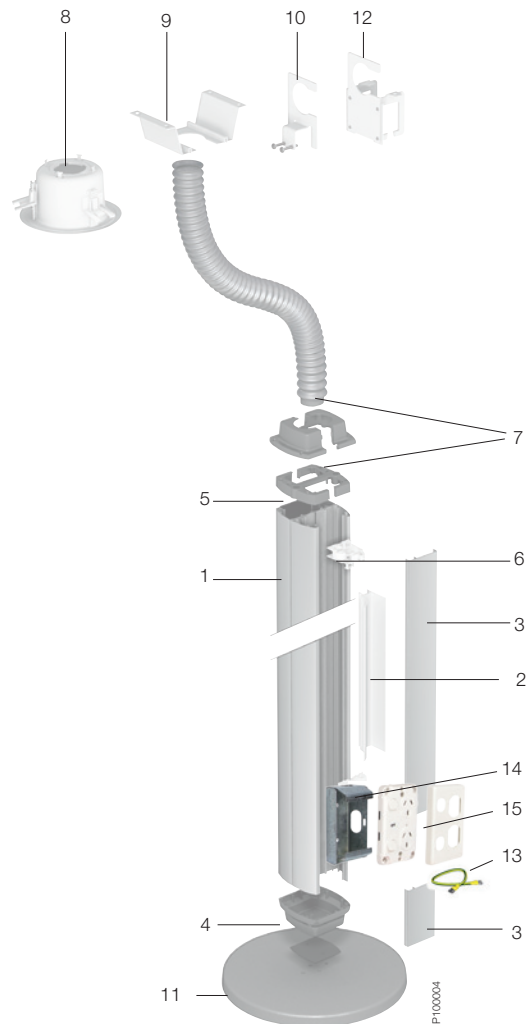


A Closer Look at OptiLine 70 Poles

When you take a closer look, you can see how OptiLine 70 Poles are suited to any office floor plan. With so many technical options to choose from, these high-quality poles will deliver reliable and convenient access to power, data and telephone, without creating an eyesore.

OptiLine 70 Free-Standing Pole

1. Base profile
2. Partition profile
3. Front cover
4. Floor fixing
5. Stop end
6. Strain relief
7. Flexible conduit with adaptor
8. Ceiling frame
9. Ceiling fixing
10. Cable tray fixing
11. Cast-iron foot
12. Busbar fixing
13. Earthing kit
14. Power/data shroud
15. Clipsal C2025 Outlet

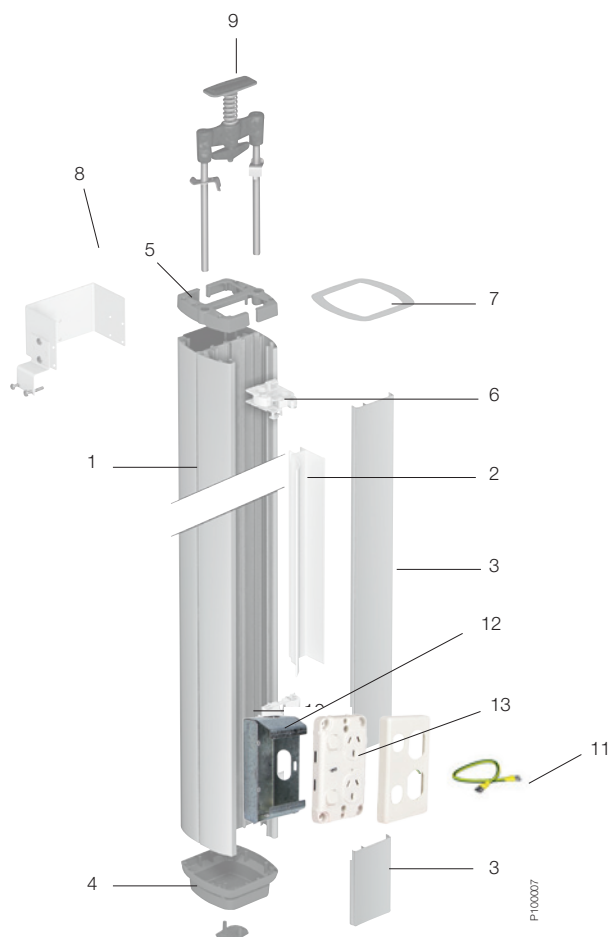


OptiLine 70 Poles

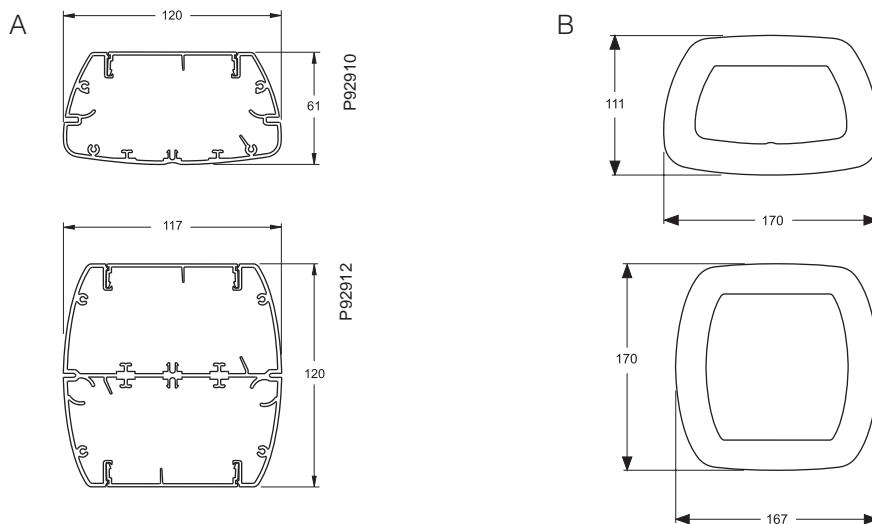
Technical and Material Information

OptiLine 70 Tension-Mounted Pole

1. Base profile
2. Partition profile
3. Front cover
4. Floor fixing
5. Stop end
6. Strain relief
7. Ceiling frame
8. Cable tray fixing
9. Adjustable ceiling fixing
10. Floor fixing plate
11. Earthing kit
12. Power/data shroud
13. Clipsal C2025 Outlet



OptiLine 70 Poles Ceiling Frames

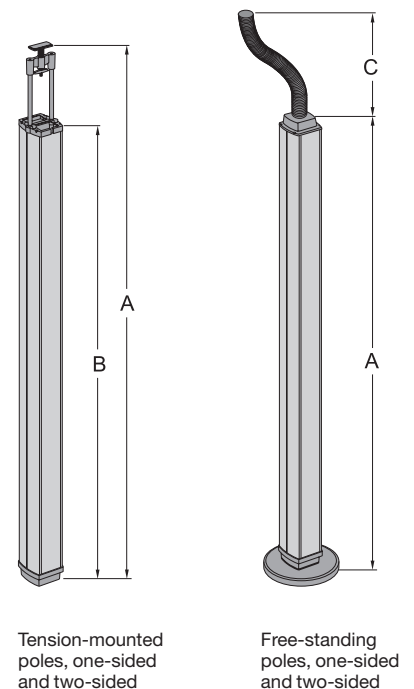


OptiLine 70 Tension-Mounted Poles (one/two-sided)

A Total height	B Height without ceiling fixing
3170mm (minimum) 3570mm (maximum)	3070mm
4170mm (minimum) 4570mm (maximum)	4070mm
5170mm (minimum) 5570mm (maximum)	5070mm
6170mm (minimum) 6570mm (maximum)	6070mm

OptiLine 70 Free-Standing Poles (one/two-sided)

A Total height of pole	C Length of flex. conduit
One-sided 2385mm	2000mm
Two-sided 2420mm	2000mm



Tension-mounted
poles, one-sided
and two-sided

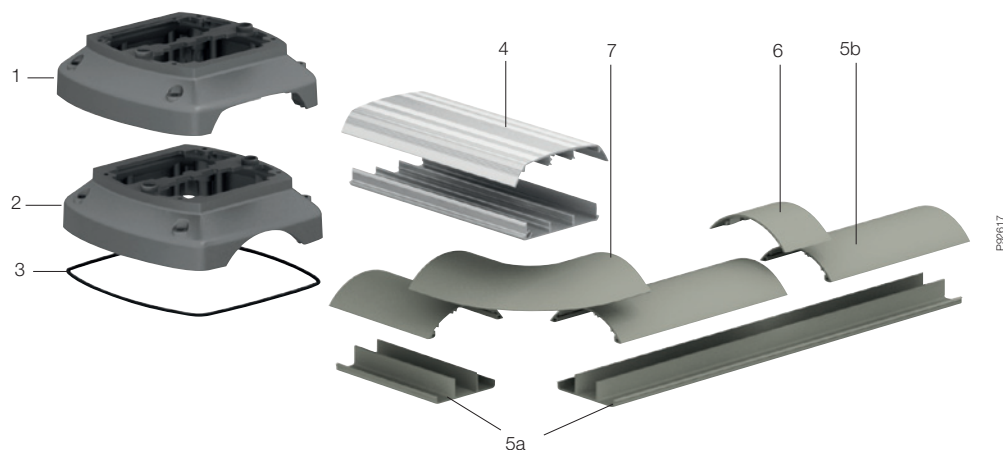
Free-standing
poles, one-sided
and two-sided

OptiLine 70 Poles

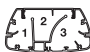
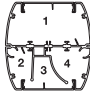
Technical and Material Information

OptiLine Cable Floor Feeder

1. Floor fixing with slot for aluminium floor feeder
2. Floor fixing with slot for PVC floor feeder
3. Gasket ring
4. Floor feeder, aluminium (base profile and cover)
5. Floor feeder, PVC
5a. Base profile
5b. Cover
6. Floor feeder jointing piece
7. Corner feeder piece



OptiLine 70 Poles Cable Capacity

Compartment	Max. Ø mm	Cross section area mm ²	Cable capacity* mm ²			
			40%	50%	60%	
One-sided pole						
1	21	1418	567	709	851	
2	26	905	362	452	543	
3	36	2207	883	1103	1324	
Two-sided pole						
1	42	4980	1992	2490	2988	
2	23	1471	588	735	883	
3	26	900	360	450	540	
4	38	2253	901	1126	1352	

* We recommend a 40% utilisation of the cable capacity.

* We recommend a 40% utilisation of the cable capacity.

Note:

These are recommended cable quantities only. Cable installer should ensure compliance with Australian/New Zealand Standards for Wiring Rules (AS/NZS 3000:2007). Maximum data cable quantities should be based on vendor recommendation.

Technical and Material Information

Aluminium, extruded	Specification	EN-AW-6063
	Density	2.7g/cm ³
	Linear expansion	2.4 x 10 ⁻⁵ /°C
	Surface treatment	Natural anodising or powder coating
	Colour	White RAL 9010
Aluminium, die-cast	Density	2.7g/cm ³
	Linear expansion	2.4 x 10 ⁻⁵ /°C
	Surface treatment	Powder coating
	Colour	Grey RAL 9007
Cast iron	Density	7.3g/cm ³
	Linear expansion	1.2 x 10 ⁻⁵ /°C
	Surface treatment	Coated with clear varnish
Zinc	Density	7.1g/cm ³
	Linear expansion	2.7 x 10 ⁻⁵ /°C
	Surface treatment	Untreated
PC/ABS	Density	1.14g/cm ³
	Linear expansion	70 x 10 ⁻⁶ /°C
	Volume resistivity	>10 ¹³ Ω cm
	Water absorption	0.6%
	Dielectric strength	19kV/mm
	Fire rating	UL 94 HB
	Colour	White RAL 9010
PS (polystyrene)	Density	1.04g/cm ³
	Colour	White RAL 9010
	Other info	Halogen-free
PVC	Density	1.5g/cm ³
	Linear expansion	60 x 10 ⁻⁶ /°C
	Volume resistivity	>10 ¹³ Ω cm
	Water absorption	<0.2%
	Colour	Grey RAL 7030
PC+ASA	Density	1.15g/cm ³
	Linear expansion	80 x 10 ⁻⁶ /°C
	Water absorption	0.6%
	Volume resistivity	>10 ¹³ Ω cm
	Dielectric strength	17kV/mm
	Fire rating	UL 94 HB
Steel	Specification	SS 1142
	Density	7.8g/cm ³
	Linear expansion	1.2 x 10 ⁻⁵ /°C
	Surface treatment	Powder coating
	Colour	White RAL 9010
Degree of protection	IP40	
Temperature range	Operating temperature from -15°C to 60°C	
Standards and certificates	The products comply with the Standards: • SS 424 10 32 • IEC 1084-2-4 The products satisfy the provisions for CE marking according to the Low Voltage Directive 73/23/EEC and 93/68/EEC	

Schneider Electric (Australia) Pty Ltd

33-37 Port Wakefield Road, Gepps
Cross,
South Australia 5094

PO Box 132, Enfield Plaza,
South Australia 5085

Telephone: (08) 8161 0511
Facsimile: (08) 8161 0900
Email: plugin@clipsal.com.au
Internet: www.clipsal.com

National Customer Care Enquiries:
1300 2025 25

National Customer Care Facsimile:
1300 2025 56

International Enquiries
International Sales and Marketing

Email: export@clipsal.com.au

Schneider Electric (NZ) Ltd

38 Business Parade South, Highbrook,
East Tamaki, Manukau 2013,
NEW ZEALAND

Telephone: + 64 9 829 0490
Facsimile: + 64 9 829 0491
Internet: www.schneider-electric.co.nz

Customer Care

Freephone: 0800 652 999
Freefax: 0800 101 152
Email: sales@nz.schneider-electric.com
Internet: www.clipsal.co.nz

You can find this brochure and many others
online in PDF format at: **clipsal.com**

Follow the links off the home page or access
the following page directly:
clipsal.com/brochures

clipsal.com

Schneider Electric (Australia) Pty Ltd reserves the right
to change specifications, modify designs and discontinue
items without incurring obligation and whilst every effort is
made to ensure that descriptions, specifications and other
information in this catalogue are correct, no warranty is
given in respect thereof and the company shall not be liable
for any error therein.

© 2013 Schneider Electric. All Rights Reserved.
Trademarks are owned by Schneider Electric Industries
SAS or its affiliated companies.

This document has been printed using FSC Mix Certified paper.
ISO 14001 environmental management system in use at mill.

O/N 25494