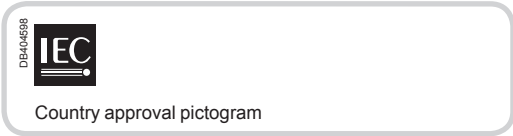


Protection Circuit protection QOvs K MCB circuits breakers



IEC/EN 60898-1

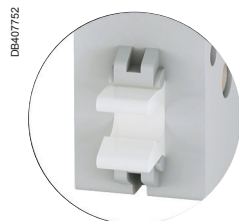
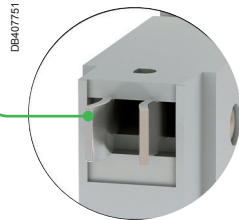
- QOvs K MCB Plug-on type is circuit breaker which combine the following functions:
 - circuit protection against short-circuit currents,
 - circuit protection against overload currents,
 - fault tripping indication by red mechanical indicator.



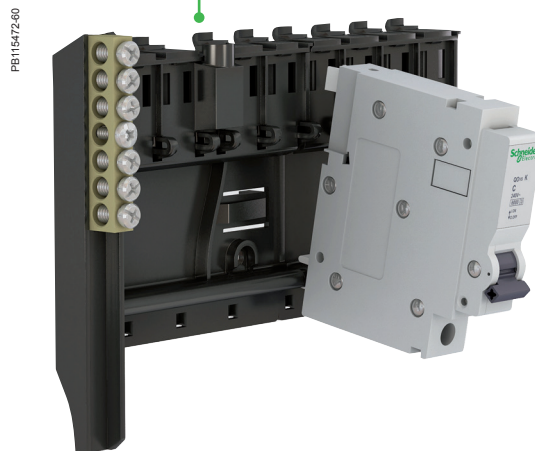
Catalogue numbers

Circuit breakers	QOvs K MCB 6000	QOvs K MCB 10000
Type	1P	2P
	<p>E46092</p>	<p>E46094</p>
Rating (In)	Curve C	
10 A	QO110KC6PT	-
16 A	QO116KC6PT	-
20 A	QO120KC6PT	-
25 A	QO125KC6T	-
32 A	QO132KC6PT	QO232KC10T
40 A	QO140KC6T	QO240KC10T
50 A	QO150KC6T	QO250KC10T
63 A	QO163KC6T	QO263KC10T

- Plug-on system**
- Fast, easy installation
 - No connection errors
 - Safety



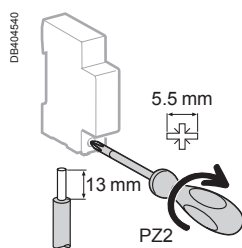
Finger proof IP20 busbar



- Fast contact closure

QOvs K MCB circuits breakers (cont.)

Connection

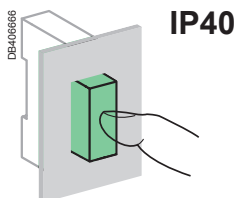


Rating	Tightening torque	Copper cables	
		Rigid	Flexible or with ferrule
10 to 63 A		DB122945	DB122946
L and N out	10 to 25 A 32 to 63 A	2 N.m	1 to 25 mm ² 1 to 25 mm ²
L in		2 N.m	2.5 to 35 mm ² 2.5 to 35 mm ²
		Plug-on type	

■ Connection by busbar or cables (as per EN 50027).

Technical data

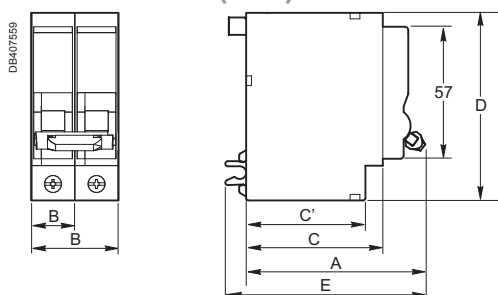
Main characteristics		QOvs K MCB
Insulation voltage (U _i)		500 V AC
Operating voltage (U _e)		240/415 V AC
Rated impulse withstand voltage (U _{imp})		4 kV according to IEC 60898-1
Reference temperature		40°C
Operating frequency		50/60 Hz
Pollution degree		3
Magnetic tripping	Curve C	5 to 10 I _n
According to IEC/EN 60898-1		
Limitation class		3
Rated breaking capacity (I _{cn})	1P, 240 V AC 2P, 240/415 V AC	6,000 A 10,000 A
Service breaking capacity (I _{cs})		75 % I _{cn}
Additional characteristics		
Degree of protection (IEC 60529)	Device in modular enclosure	IP40 Insulation class II
Endurance (O-C)	Electrical Mechanical	4000 cycles 20,000 cycles
Operating temperature		-5°C to +60°C
Storage temperature		-40°C to +85°C
Tropicalization (IEC 60068-1)		Treatment 2 (relative humidity 95 % to 55°C)



Weight (g)

Circuit-breaker	
Type	QOvs K MCB
1P	104
2P	208

Dimensions (mm)



Circuit-breaker							
Type	Number of poles	A	B	C	C'	D	E
QOvs K MCB	1P	78.3	18.7	58.8	51.4	81	86.3
	2P	78.3	37.4	58.8	51.4	81	86.3