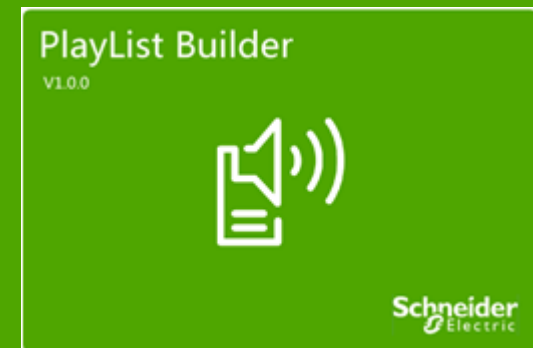


# How to use the **Schneider** Playlist Builder



Project Marketing Manager

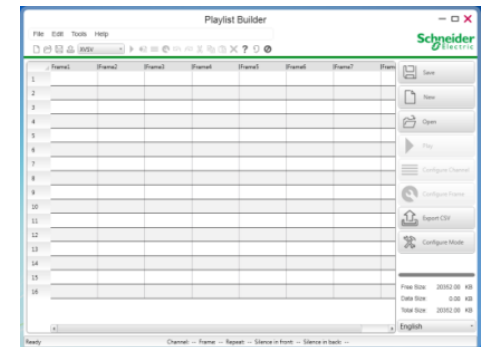
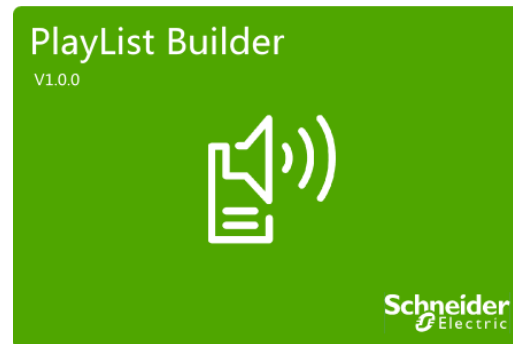
James Shi

May 20<sup>rd</sup>, 2013



# Table of Contents

- 1. Introduction
- 2. Data Registration Flowchart
- 3. Making New Playlist
- 4. Editing Saved Playlist
- 5. UVPs



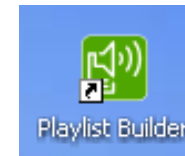
# 1. Introduction

➤ Playlist Builder is one free software offered by Schneider, and it can be used for some audio devices, present like XVSV and XVU.

➤ You can get it freely by downloading from Schneider website, [http:\\_\\_\\_\\_\\_](http://_____)

➤ System requirements for Playlist Builder, and after installation you will get the shortcut:

Platform	PC
CPU	Intel®Celeron®G530 2.40GHz or higher
Memory	1 GB minimum, 2 GB or more recommended
Available Disk Space	2.0 GB or more on hard disk
Operating System	Windows XP with Service Pack 3 or Windows 7



➤ Use Playlist Builder, you can:

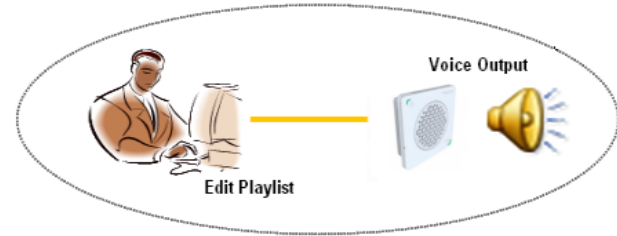
- Specify the MP3 file for each Frame of the audio device.
- Specify the MP3 files playback order for each Channel of the audio device.
- Specify various parameters for the audio device, such as Signal Input Mode, Operation Mode, Volume Reduction Value.

# 2. Data Registration Flowchart

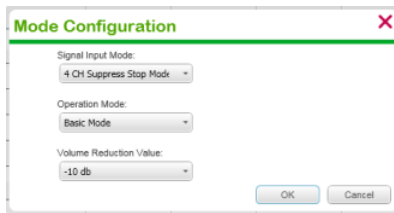
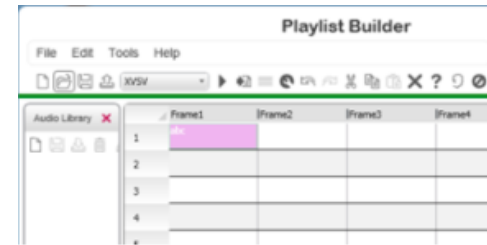
1. Download & Install software.



2. Create a New Playlist or open saved one.



3. Select sound for each Frame.  
 - Input mp3 files.  
 - Use the resources on hand.



4. Configure the Channel and Frame.  
 - Mode, Repeat times, interval silence, etc.,



5. Save the "Audio" folder and "Playlist" to SD Card.



6. Import SD card to audio device to upload files, and then eject SD card.



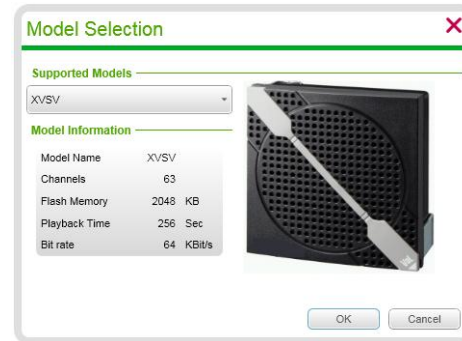
XVSV series XVU series

# 3. Making New Playlist

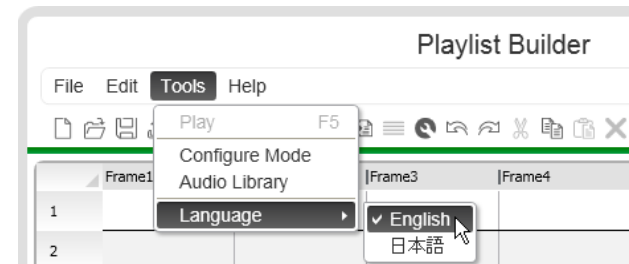
## <Preparations>

- Prepared MP3 files according to your applications. And put all MP3 files into “Audio” folder.
- Got a SD card, FAT16 format. Memory 2 MB and above, SD card reader.

- 1) Start the Playlist Builder
- 2) Create a New Playlist
- 3) Choose the appropriate model



- 4) Select your favorite language, English or Japanese, in the future, will also support Germany, France and Italy.



- 5) Drag the selected MP3 files from Audio Library, and drop it to specified positions.

	Frame1	Frame2	Frame3	Frame4	Fr
1		abc			
2			Chime		
3				Cherry	
4					
5					

# 3. Making new Playlist

5) You also can modify files or positions conveniently.

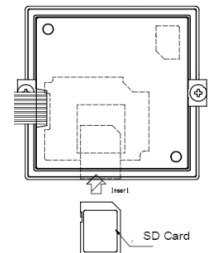
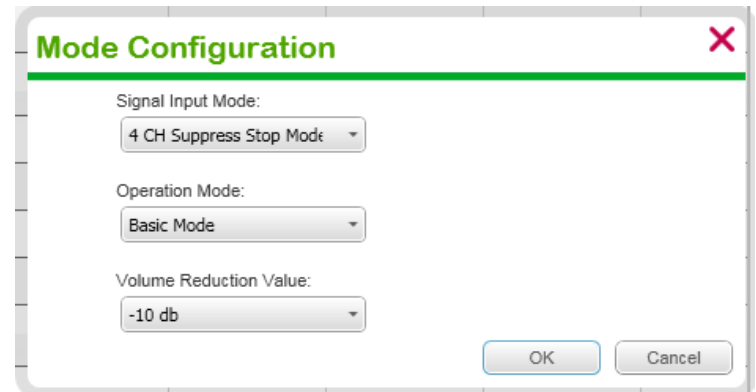
	Frame1	Frame2	Frame3	Frame4	Frame5
1		abc			
2				abc	
3					
4			abc		
5					

6) Set up Frame and Channel Configuration

7) Preview the configuration of Frame and Channel

5) Save “Audio” and Playlist to SD Card (root folder)

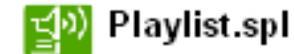
5) Import playlist to audio device



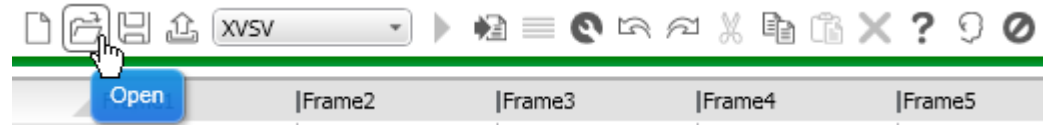
The files will be downloaded into device automatically, start with “Bi” and end with longer sound “Bi...” ;It takes less than 3 minutes. Then you can eject the SD card.

# 3. Editing saved Playlist

1) Start the Playlist Builder



2) Copy the saved "Audio" and "Playlist" from SD card into your PC, and open the saved Playlist



3) Update the MP3 files and also modify its positions, you may insert new files, delete the existing files, or move its positions,...

	Frame1	Frame2	Frame3	Frame4	Frame5
1		abc			
2				abc	
3					
4			abc		
5					

Red arrows indicate moving the "abc" content from Frame2 to Frame4 and from Frame3 to Frame2.

4) Modify Frame and Channel Configuration

	Frame1	Frame2	Frame3	Frame4	Frame5	Frame6	Frame7
1		abc					
2			Chime				
3				Cherry			
4							
5							
6							
7							
8							
9							
10							
11							
12							
13							

### Mode Configuration

Signal Input Mode:  
5 CH Suppress Mode

Operation Mode:  
Basic Mode

Volume Reduction Value:  
-10 db

OK Cancel

# 3. Editing saved Playlist

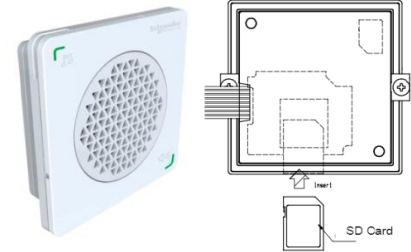
## 5) Preview the configuration of Frame and Channel

You can play a Channel or a Frame after you edit a Frame.

	Frame1	Frame2	Frame3	Frame4	Frame5
1					
2					
3					
4		sound1		sound1	
5	Playing channel				
6					

## 6) Empty SD card and then save updated “Audio” and modified playlist into it (root folder)

## 6) Import playlist to audio device, the voice inside will be updated.



The files will be downloaded into device automatically, start with “Bi” and end with longer sound “Bi...” ;It takes less than 3 minutes.

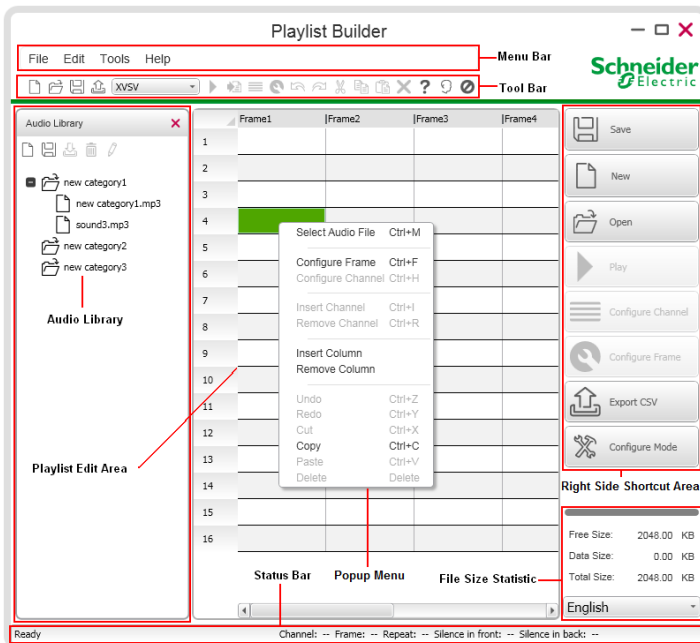
Everything existed inside will be replaced by new files. Then you can eject the SD card.



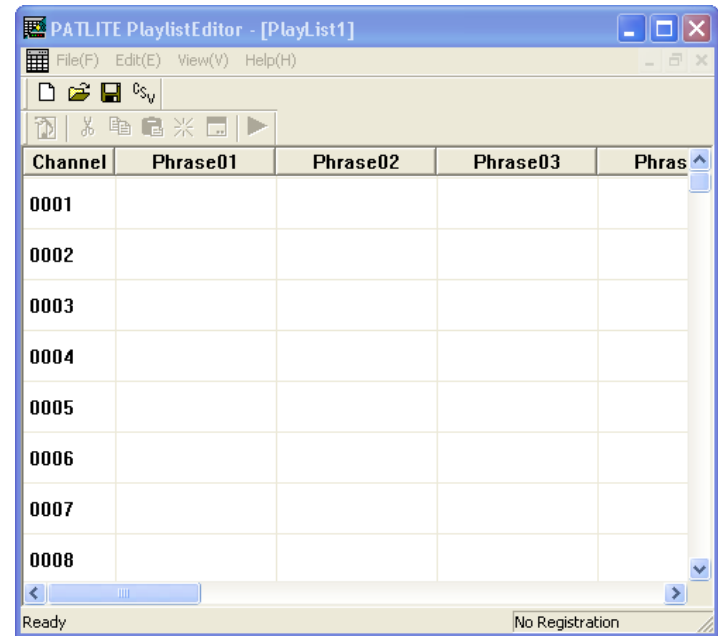
# 5. UVPs and Competitor Comparison

## Schneider

- Friendly user interface and easy to use
- Highly integrated interface and you may use it much efficiently



## Patlite



Very simple interface, and not efficient

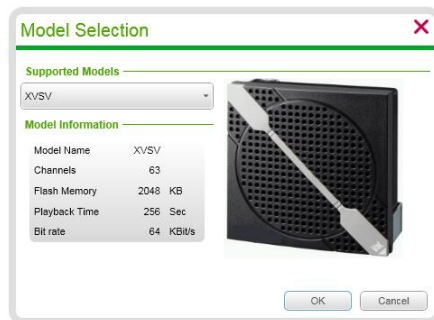
- Normal appearance
- No Audio library
- No information toolbar
- Lack of some useful shortcuts

## Schneider

- Multi-language support in one UI.  
More convenient for user.



- Specific guide for different devices  
More clear to user.



## Patlite

- Separate English and Japanese versions.

Have to download and install the software again if you want to change the UI language.

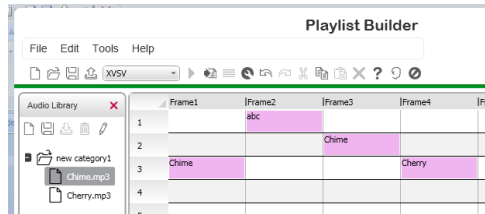
- No specific guide, the user have to remember clearly the devices.



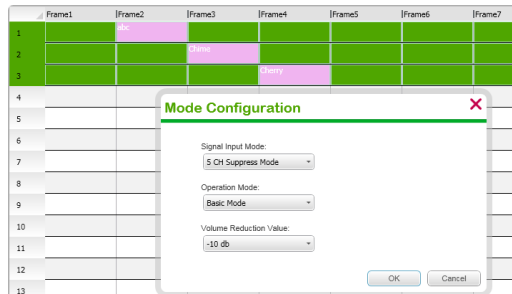
Which one ? And what's the specific specs?

# Schneider

- Audio library on site  
More convenient for user to configurate it

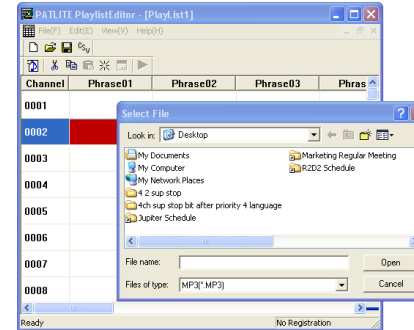


- Set operation model by software  
More convenient, and needn't to modify the device

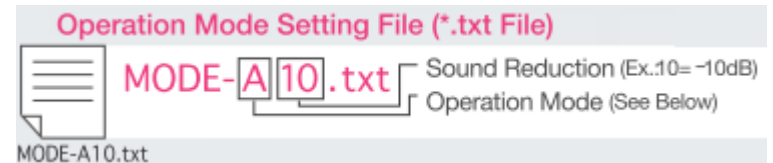


# Patlite

- No audio library and you have to open folder when you input every mp3 file.



- Operation model only can be changed by renaming specific file by hand.



Make the most of your  
energy™

