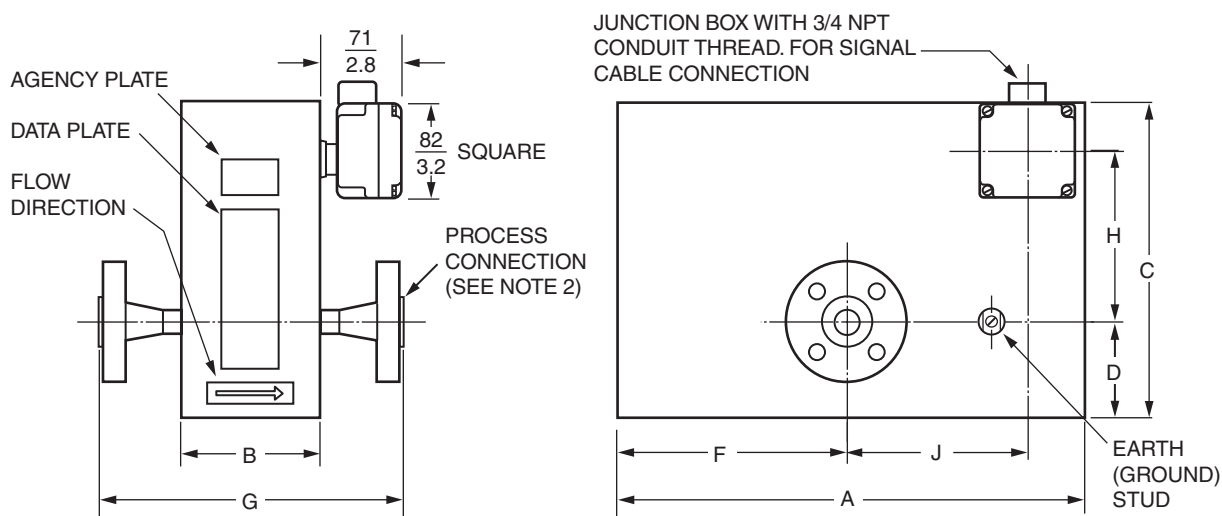


# I/A Series<sup>®</sup> Mass Flowmeters

## Model CFS10 Mass Flowtubes

6 to 50 mm (1/4 to 2 in) Sizes  
Style B

### FLANGED END FLOWTUBES



**NOTES:**

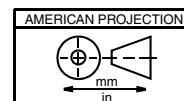
1. SEE NEXT PAGE FOR FLOWTUBE AND FLANGE DIMENSIONAL DATA.
2. SEE PAGE 3 FOR THREADED AND SANITARY END CONNECTIONS.

**APPROXIMATE MASS  
FLANGED FLOWTUBES**

Nominal Line Size		Approximate Mass(a)	
mm	in	kg	lb
6	1/4	9.6	21.0
15	1/2	11.5	25.5
20	3/4	18.5	40.5
25	1	22.5	49.5
40	1 1/2	53.4	118
50	2	77.6	171

(a) With ANSI Class 150 flanges.

For dimensional information specific to your sales order, contact your sales representative to order a Certified Dimensional Print (CDP).



**Foxboro<sup>®</sup>**

by **Schneider Electric**

FLANGED END FLOWTUBES (Cont.)

BOLT HOLE QUANTITY AND BOLT DIAMETER FOR ANSI AND DIN FLANGES

Nominal Flowtube Size	ANSI 150		ANSI 300		ANSI 600		PN 40		PN 100	
	Bolt Holes	Bolt Dia.	Bolt Holes	Bolt Dia.	Bolt Holes	Bolt Dia.	Bolt Holes	Bolt Dia.	Bolt Holes	Bolt Dia.
6 mm(a) (1/4 in)	4	1/2 in	4	1/2 in	4	1/2 in	4	M12	4	M12
15 mm (1/2 in)	4	1/2 in	4	1/2 in	4	1/2 in	4	M12	4	M12
20 mm (3/4 in)	4	1/2 in	4	5/8 in	4	5/8 in	4	M12	4	M16
25 mm (1 in)	4	1/2 in	4	5/8 in	4	5/8 in	4	M12	4	M16
40 mm (1 1/2 in)	4	1/2 in	4	3/4 in	4	3/4 in	4	M12	4	M18
50 mm (2 in)	4	5/8 in	8	5/8 in	8	5/8 in	4	M16	4	M24

(a)Uses 15 mm (1/2 in) flanges.

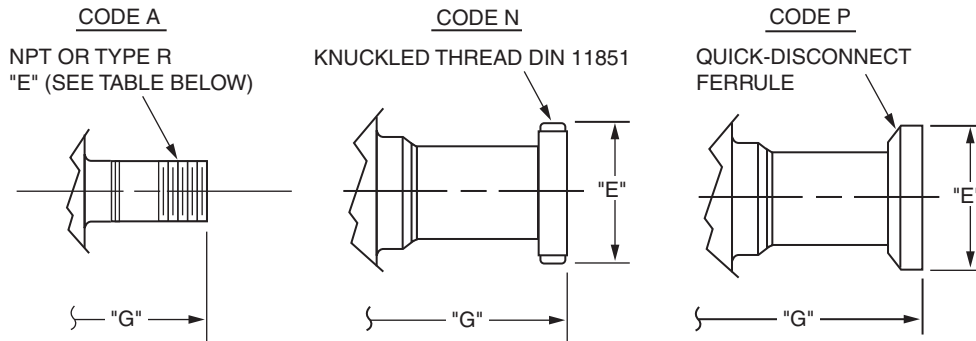
RAISED FACE-TO-RAISED FACE DIMENSIONS FOR ANSI AND DIN  
FLANGES

Nominal Flowtube Size	Dimension "G" for Flange Type:				
	ANSI Class 150	ANSI Class 300	ANSI Class 600	PN 40	PN 100
6 mm (1/4 in)	265.7 10.46	265.7 10.46	265.7 10.46	265.7 10.46	265.7 10.46
15 mm (1/2 in)	240 9.46	249 9.82	262 10.32	262 10.30	265 10.42
20 mm (3/4 in)	292 11.48	301 11.86	314 12.36	306 12.04	314 12.36
25 mm (1 in)	294 11.56	306 12.06	319 12.56	301 11.86	320 12.58
40 mm (1 1/2 in)	396 15.58	408 16.08	411 16.20	408 16.08	411 16.20
50 mm (2 in)	436 17.16	449 17.66	468 18.42	437 17.22	445 17.52

FLOWTUBE DIMENSIONAL DATA

Nominal Flowtube Size	Other Flowtube Dimensions						
	Dim. "A"	Dim. "B"	Dim. "C"	Dim. "D"	Dim. "F"	Dim. "H"	Dim. "J"
6 mm (1/4 in)	411 16.2	160 6.3	231 9.1	29.5 1.16	206 8.1	149 5.9	155 6.1
15 mm (1/2 in)	417 16.4	122 4.8	277 10.9	84.1 3.31	208 8.2	142 5.6	127 5.0
20 mm (3/4 in)	518 20.4	163 6.4	391 15.4	121.4 4.78	259 10.2	227 8.9	0.0 0.0
25 mm (1 in)	518 20.4	163 6.4	391 15.4	121.4 4.78	259 10.2	227 8.9	0.0 0.0
40 mm (1 1/2 in)	704 27.7	241 9.5	457 18.0	130 5.1	353 13.9	267 10.5	0.0 0.0
50 mm (2 in)	808 31.8	282 11.1	516 20.3	149.9 5.90	404 15.9	298 11.8	0.0 0.0

**THREADED AND SANITARY END CONNECTIONS**



Nominal Flowtube Size	Dimensions "E" and "G" for the Following End Connection Codes(a)						Approximate Mass	
	Code A		Code N		Code P(b)		kg	lb
	"G"	"E"	"G"	"E"	"G"	"E"		
6 mm (1/4 in)	224 8.8	1/4 NPT	NOT APPLICABLE		274 10.8	24.9 0.98	8.8	19.4
15 mm (1/2 in)	211 8.3	1/2 NPT	284 11.2	52.1 2.05	249 9.8	<u>50.3</u> 1.98	10.4	22.9
20 mm (3/4 in)	259 10.2	3/4 NPT	290.3 11.43	52.1 2.05	290.3 11.43	<u>50.3</u> 1.98	16.7	36.8
25 mm (1 in)	NOT APPLICABLE		320 12.6	52 2.0	287 11.3	<u>50.3</u> 1.98	20.3	44.8
40 mm (1 1/2 in)	NOT APPLICABLE		427 16.8	65 2.56	386 15.2	<u>50.3</u> 1.98	49.9	110
50 mm (2 in)	NOT APPLICABLE		457 18.0	78 3.1	414 16.3	64 2.5	71.2	157

(a) DIMENSION "G" IS FACE-TO-FACE DISTANCE BETWEEN END CONNECTIONS.  
CODE "N" MATES WITH DIN COUPLING W/EXTERNAL THREAD, DIN 11851.  
(b) FLOWTUBE SIZE 1/4-INCH MATES WITH 1/2-INCH QUICK-DISCONNECT FERRULE.  
FLOWTUBE SIZES 1/2, 3/4, 1, AND 1 1/2-INCH MATE WITH 1-INCH QUICK-DISCONNECT FERRULE.  
FLOWTUBE SIZE 2-INCH MATES WITH 2-INCH QUICK-DISCONNECT FERRULE.