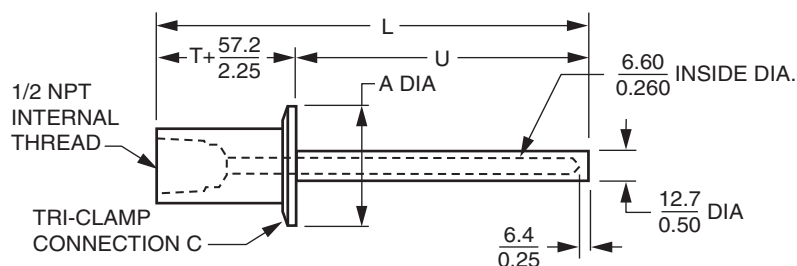


TS Series Sanitary Thermowells

Straight Shank Thermowells



INSERTION LENGTH "U" = _____

OVERALL LENGTH "L" = _____

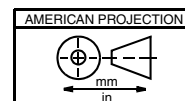
LAGGING LENGTH "T" = _____

TRI-CLAMP CONNECTION "C" = _____

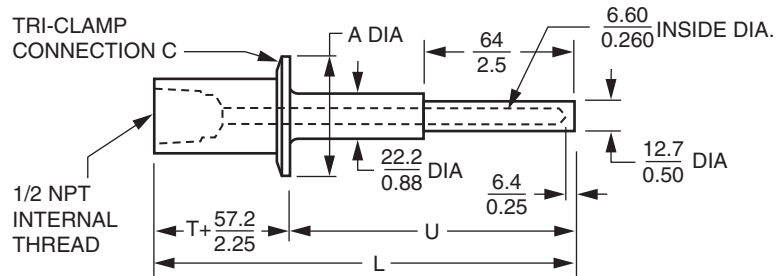
NOTE: "u" can be from 2 to 36 inches (5 to 914 mm) in 0.5 inch (12.7 mm) increments.
 "T" can be from 0 to 4 inches (0 to 102 mm) in 0.5 inch (12.7 mm) increments
 "C" can be 3/4, 1, 1 1/2, 2, or 3 inches (nominal)

Tri-Clamp Connection C	Dimension A
3/4	25.0 mm (0.99 in)
1	50.5 mm (1.99 in)
1 1/2	50.5 mm (1.99 in)
2	64.0 mm (2.52 in)
3	90.9 mm (3.58 in)

For dimensional information specific to your sales order, contact your sales representative to order a Certified Dimensional Print (CDP).



Stepped Shank Thermowells



INSERTION LENGTH "U" = _____

OVERALL LENGTH "L" = _____

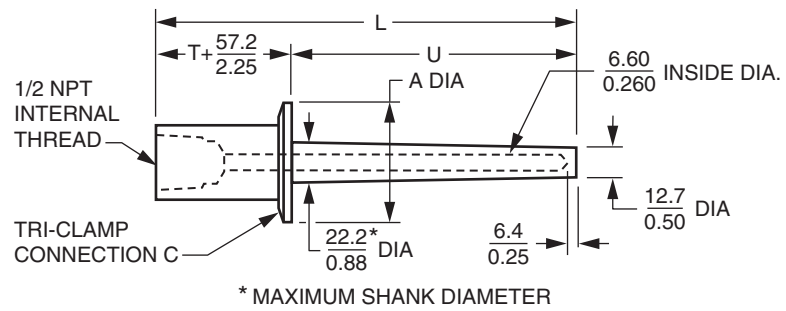
LAGGING LENGTH "T" = _____

TRI-CLAMP CONNECTION "C" = _____

NOTE: "u" can be from 2 to 36 inches (5 to 914 mm) in 0.5 inch (12.7 mm) increments.
 "T" can be from 0 to 4 inches (0 to 102 mm) in 0.5 inch (12.7 mm) increments
 "C" can be 1, 1 1/2, or 2 inches (nominal)

Tri-Clamp Connection C	Dimension A
3/4	25.0 mm (0.99 in)
1	50.5 mm (1.99 in)
1 1/2	50.5 mm (1.99 in)
2	64.0 mm (2.52 in)
3	90.9 mm (3.58 in)

Tapered Shank Thermowells



INSERTION LENGTH "U" = _____

OVERALL LENGTH "L" = _____

LAGGING LENGTH "T" = _____

TRI-CLAMP CONNECTION "C" = _____

NOTE: "u" can be from 2 to 36 inches (5 to 914 mm) in 0.5 inch (12.7 mm) increments.
 "T" can be from 0 to 4 inches (0 to 102 mm) in 0.5 inch (12.7 mm) increments
 "C" can be 1, 1 1/2, or 2 inches (nominal)

Tri-Clamp Connection C	Dimension A
3/4	25.0 mm (0.99 in)
1	50.5 mm (1.99 in)
1 1/2	50.5 mm (1.99 in)
2	64.0 mm (2.52 in)
3	90.9 mm (3.58 in)



Invensys Systems, Inc.
38 Neponset Avenue
Foxboro, MA 02035
United States of America
<http://www.fielddevices.foxboro.com>

Global Customer Support
Inside U.S.: 1-866-746-6477
Outside U.S.: 1-508-549-2424
Website: <http://support.ips.invensys.com>

Copyright 2005-2016 Invensys Systems, Inc.
All rights reserved.

Invensys and Foxboro are trademarks of Invensys Limited, its subsidiaries, and affiliates. All other trademarks are the property of their respective owners.

Invensys is now part of Schneider Electric.