

TABLE 1:  
INPUT POWER CONNECTIONS/WEIGHT/HEAT REJECTION

SYSTEM KVA	INPUT VOLTS	INPUT CIRCUIT BREAKER				WT.(LBS.)	BTU/HR
		TRIP AMPS	CONNECTOR LUG WIRE RANGE		CONDUIT SIZE		
			STANDARD CB	HI-INTERRUPT CB			
50	208	175	(1) #4 - 350	(1) #4 - 350	2	1690	4100
50	480	80	(1) #12 - 1/0	(1) #12 - #1	2	1690	4100
50	600	60	(1) #12 - 1/0	(1) #12 - #1	2	1690	4100
75	208	300	(1) #1 - 600	(3) 3/0 - 500	(2) 2 1/2	1840	5200
75	208/120	300	(1) #1 - 600	(3) 3/0 - 500	(2) 2 1/2	1090	600
75	380	150	(1) #4 - 350	(1) #4 - 350	2	2040	5200
75	480	125	(1) #4 - 350	(1) #4 - 350	2	2040	5200
75	600	90	(1) #12 - 1/0	(1) #12 - #1	2	2040	5200
100	208	350	(1) #1 - 600	(3) 3/0 - 500	(2) 2 1/2	2090	5800
100	208/120	350	(1) #1 - 600	(3) 3/0 - 500	(2) 2 1/2	1090	600
100	480	150	(1) #4 - 350	(1) #4 - 350	2	2090	5800
125	480	200	(1) #4 - 350	(1) 1/0 - 350	2	2470	6500
125	600	150	(1) #4 - 350	(1) #4 - 350	2	2470	6500
150	380	300	(1) #1 - 600	(3) 3/0 - 500	(2) 2 1/2	2850	7300
150	480	225	(1) #4 - 350	(1) 1/0 - 350	2	2680	7300
150	600	200	(1) #4 - 350	(1) 1/0 - 350	2	2680	7300
200	480	350	(1) #1 - 600	(3) 3/0 - 500	(2) 2 1/2	2920	9700
225	380	450	(3) 3/0 - 500	(3) 3/0 - 500	(2) 2 1/2	3230	9800
225	480	400	(1) #1 - 600	(3) 3/0 - 500	(2) 2 1/2	3100	9800
225	600	300	(1) #1 - 600	(3) 3/0 - 500	(2) 2 1/2	3100	9800
300	480	600	(3) 3/0 - 500	(3) 3/0 - 500	(2) 2 1/2	3600	11100

TABLE 2:  
OUTPUT POWER CONNECTIONS

TRIP AMPS	WIRE CONNECTIONS
10 - 30	#14 - 8
35 - 70	#8 - 2
80 - 125	#4 - 2/0

12. THIS CABLE TRAY IS REQUIRED FOR ALL TOP ENTRY UNITS TO PREVENT DAMAGE TO PCBA'S & TO KEEP CONTROL CIRCUITS AWAY FROM POWER CIRCUITS. IT CAN TEMPORARILY BE REMOVED TO AID IN PULLING CABLES BUT CAN NOT BE LEFT OUT. IT ACTS AS A PROTECTIVE BARRIER AND OUTPUT CABLE TRAY. SYSTEM WARRANTY IS VOID IF LEFT OUT. FURTHERMORE, LEAVING IT OUT CAN CAUSE SUSTEM MALFUNCTIONS OR FAILURE.

11. FOR ZIG-ZAG TRANSFORMER OPTION:  
PANEL A, C CONNECTED TO WINDING 1  
PANEL B, D CONNECTED TO WINDING 2

10. WHEN MAKING INPUT CONNECTIONS, MAKE SURE THAT THE EXISTING CONTROL WIRING ARE KEPT IN PLACE.

9. INPUT NEUTRAL BUSBAR IS ONLY PROVIDED ON TRANSFORMERLESS MODELS. IF USED, CONNECT NEUTRAL CABLES AS SHOWN.

8. IF OPTIONAL J-BOX IS SUPPLIED, REFER TO SEPARATE INSTALLATION DRAWINGS.

7. ALL CABLE CONNECTIONS ARE BASED ON CUSTOMER SUPPLIED COPPER WIRE RATED 75°C

6. CUSTOMER TO REMOVE AND CUT HOLES IN CONDUIT PLATE AS REQUIRED.

5. FOLLOW THE NEC (NATIONAL ELECTRICAL CODE) AND OTHER APPLICABLE LOCAL CODES.

4. HEAT LOSS BASED ON FULL RESISTIVE LOAD CAN VARY +/-10% UNDER DIFFERENT LOAD CONDITIONS.

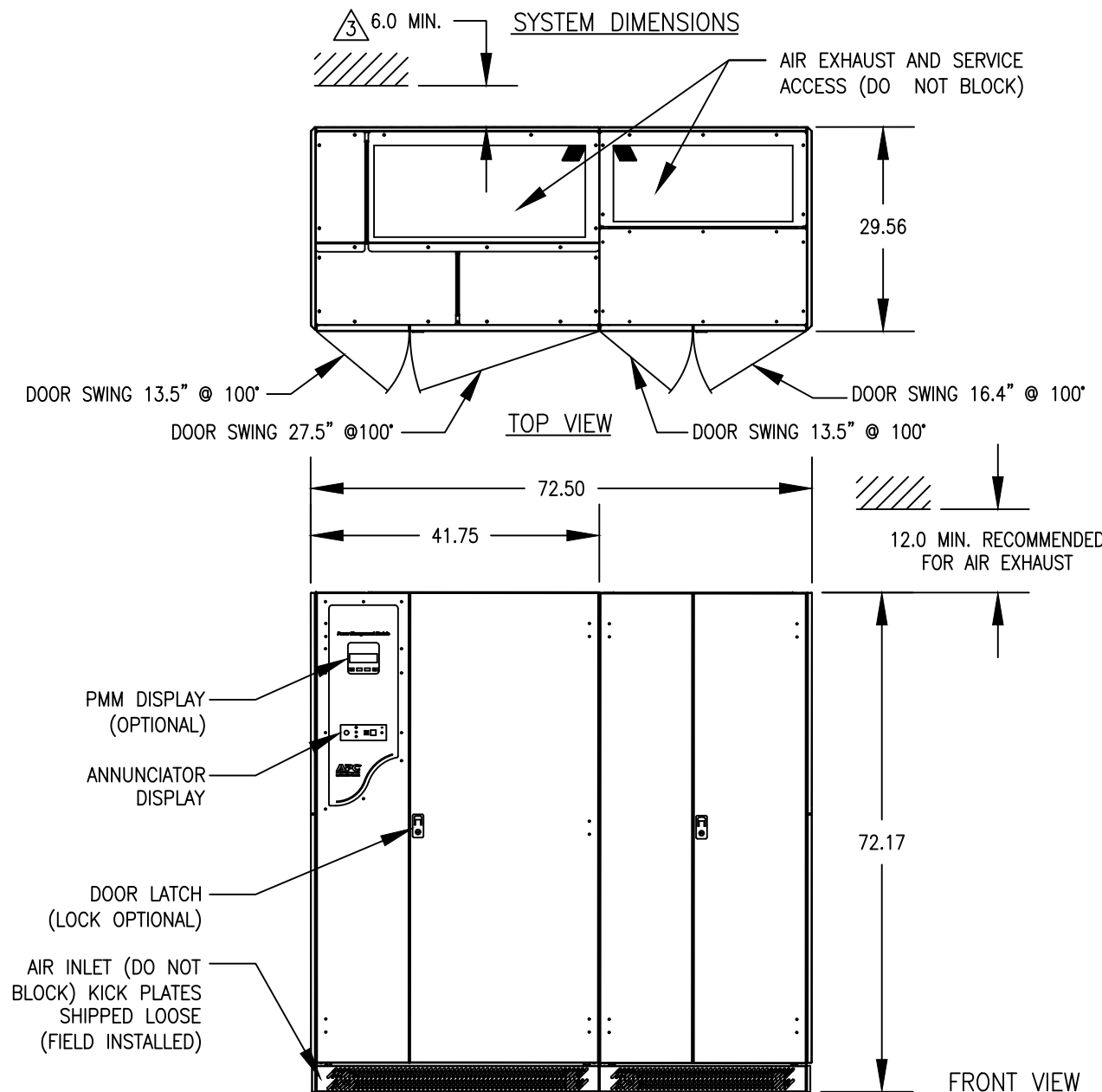
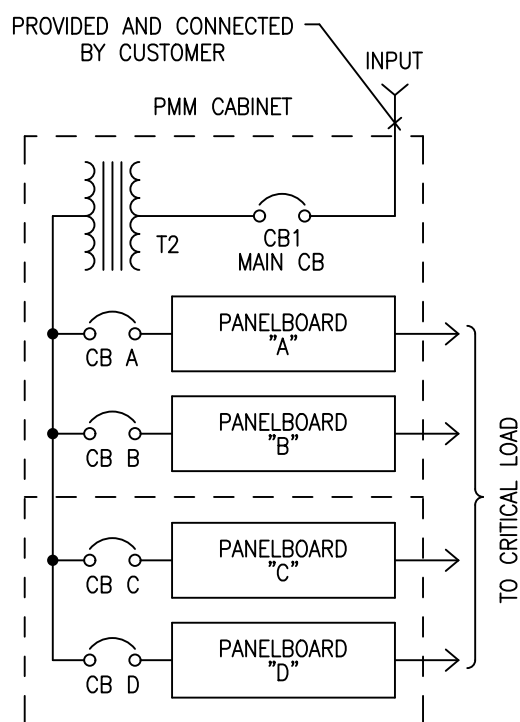
3. 6.00 INCHES REAR CLEARANCE IS REQUIRED FOR VENTILATION.  
36.00 INCHES FRONT CLEARANCE FOR MAINTENANCE.

2. REFER TO OWNERS MANUAL FOR INSTALLATION AND OPERATING INSTRUCTIONS.

1. COLOR: ?LIGHT GREY.

NOTES: UNLESS OTHERWISE SPECIFIED.

SINGLE LINE DIAGRAM



THIS DRAWING AND SPECIFICATIONS HEREIN ARE THE PROPERTY OF SCHNEIDER ELECTRIC AND SHALL NOT BE COPIED, REPRODUCED OR USED IN WHOLE OR IN PART, AS THE BASIS FOR THE MANUFACTURE OR SALE OF ITEMS WITHOUT WRITTEN PERMISSION FROM SCHNEIDER ELECTRIC. THIS DRAWING IS BASED UPON LATEST AVAILABLE INFORMATION AND IS SUBJECT TO CHANGE WITHOUT NOTICE.



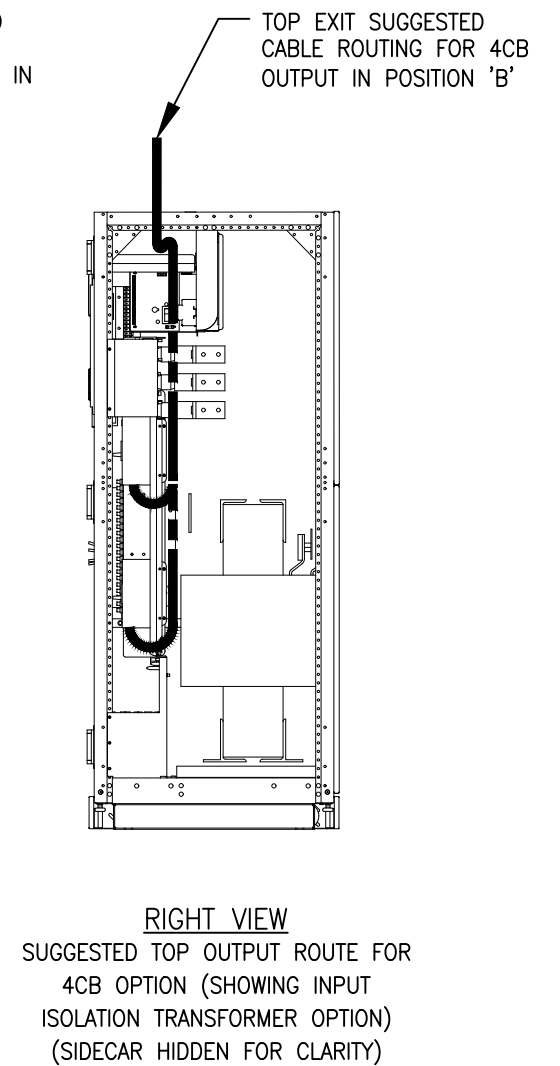
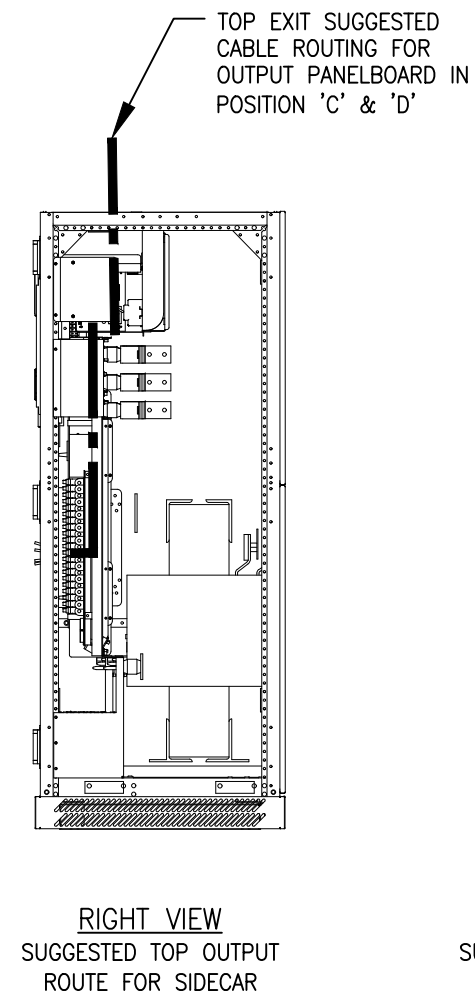
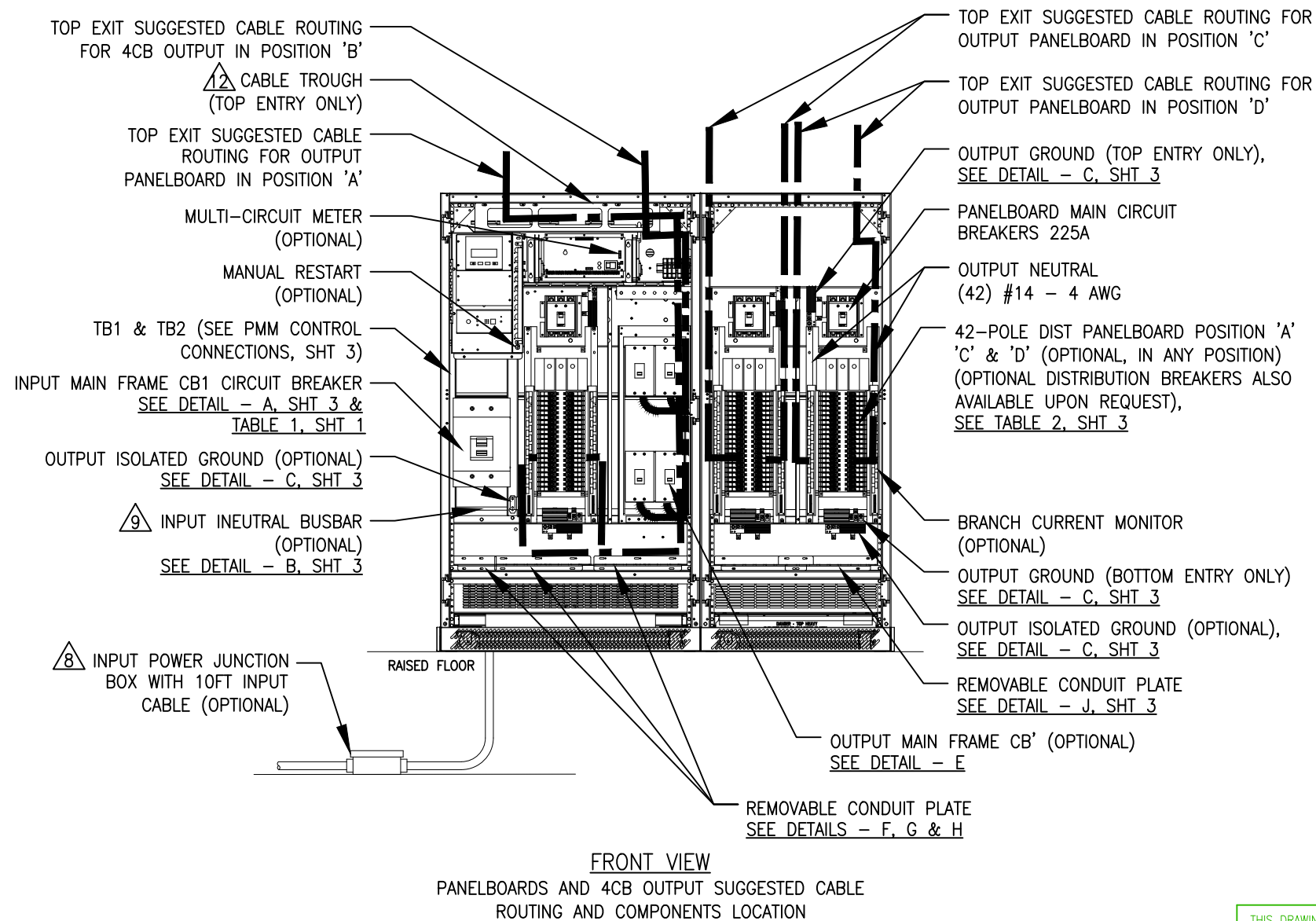
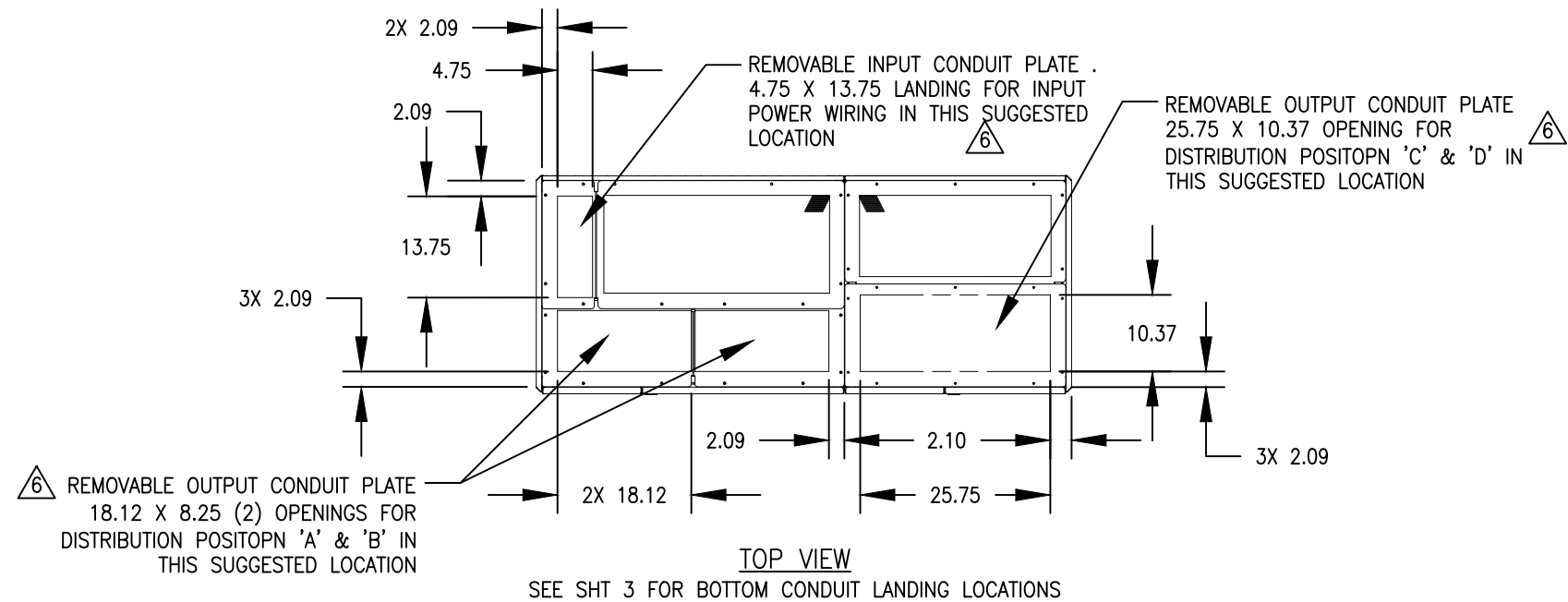
TITLE:  
MGE POWER MANAGEMENT MODULE  
SYSTEM 165 WITH FRONT CABINET PMM  
INSTALLATION DRAWING

DWG NO: 90-505002-00

PROJECT: STD SUBMITTAL DRAWINGS SHEET 1 OF 3

REV. 3

DRAWN:	YRS	14-JAN-02	THIRD ANGLE PROJ.
ENGINEER:	J CHEN	14-JAN-02	
APPROVED:	I KENNEDY	14-JAN-02	



NOTES: UNLESS OTHERWISE SPECIFIED.

THIS DRAWING AND SPECIFICATIONS HEREIN ARE THE PROPERTY OF SCHNEIDER ELECTRIC AND SHALL NOT BE COPIED, REPRODUCED OR USED IN WHOLE OR IN PART, AS THE BASIS FOR THE MANUFACTURE OR SALE OF ITEMS WITHOUT WRITTEN PERMISSION FROM SCHNEIDER ELECTRIC. THIS DRAWING IS BASED UPON LATEST AVAILABLE INFORMATION AND IS SUBJECT TO CHANGE WITHOUT NOTICE.

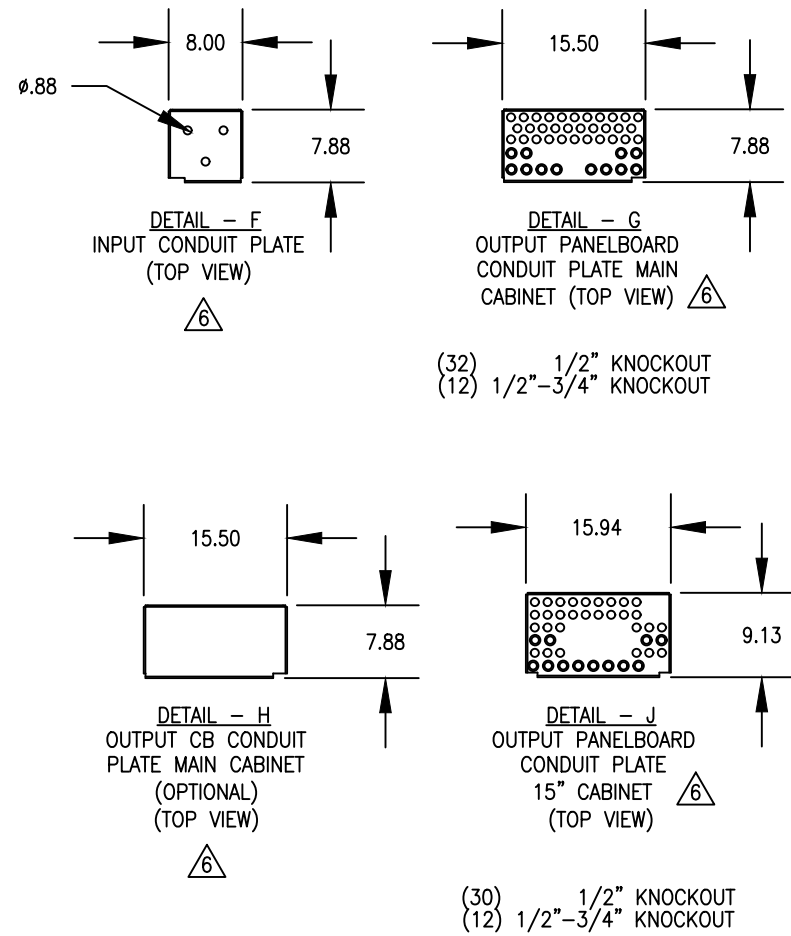
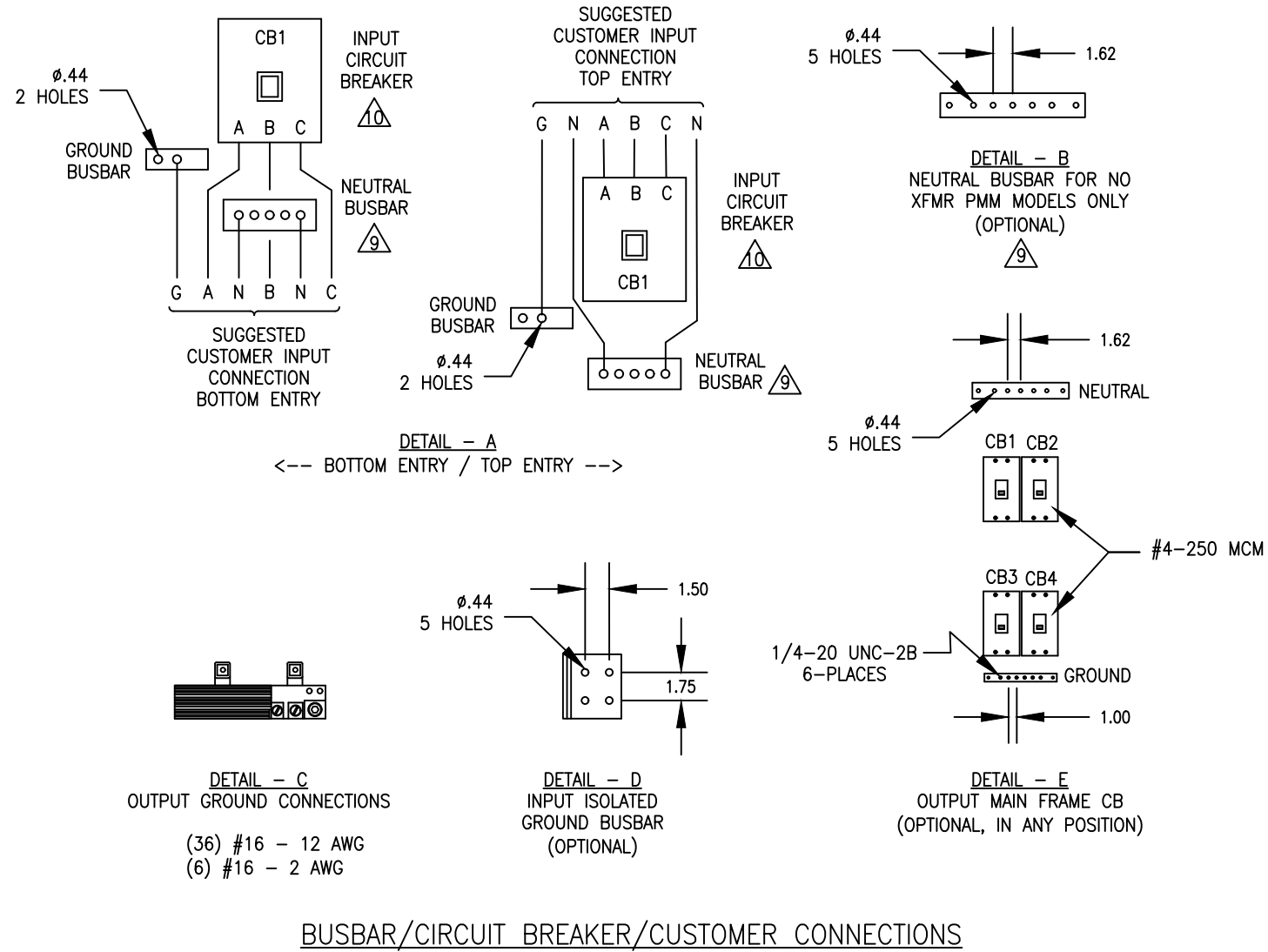
**Schneider Electric**

TITLE:  
MGE POWER MANAGEMENT MODULE  
SYSTEM 165 WITH FRONT CABINET PMM  
INSTALLATION DRAWING

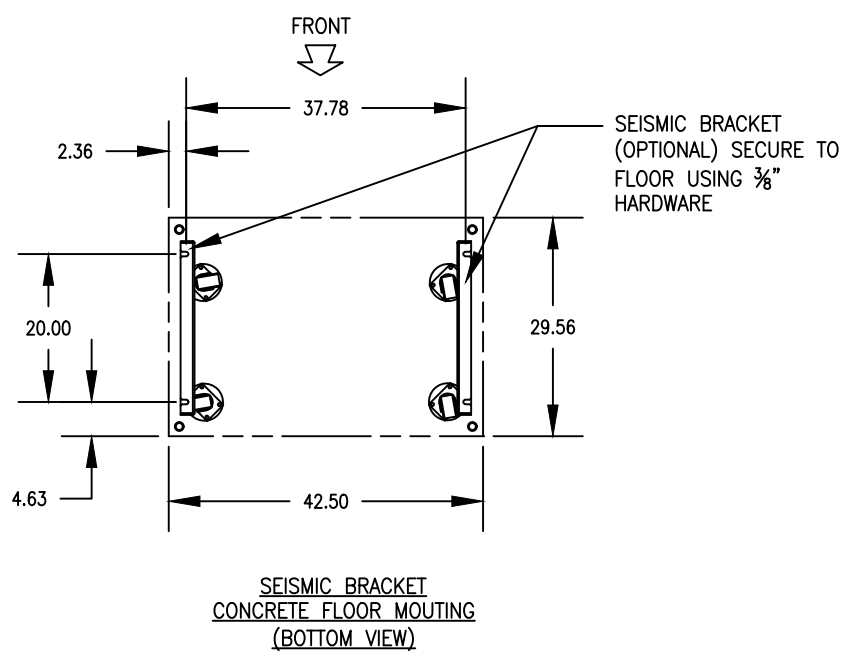
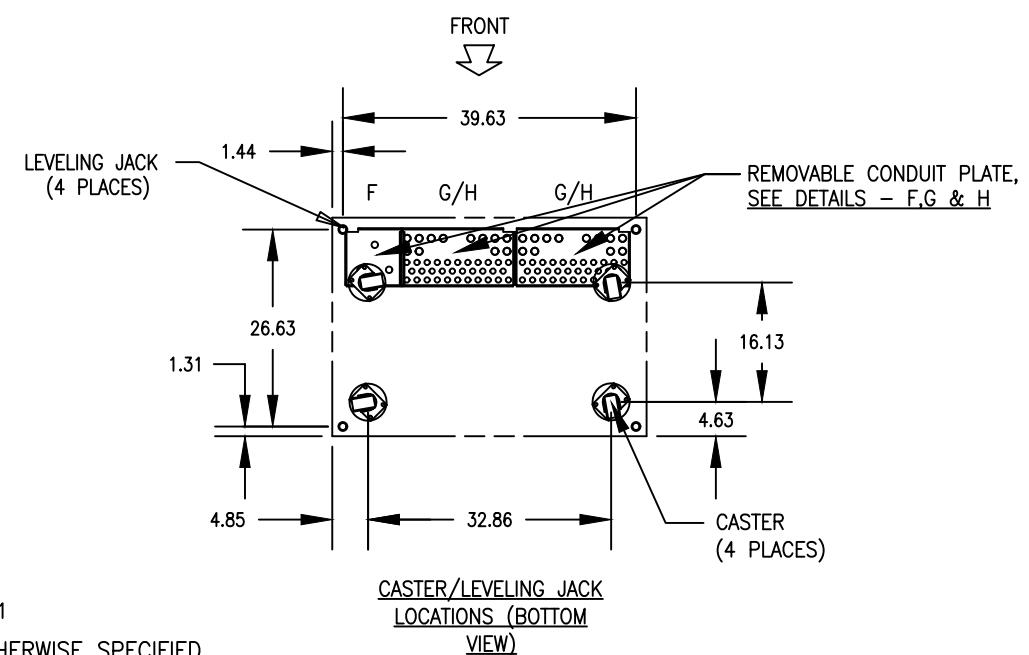
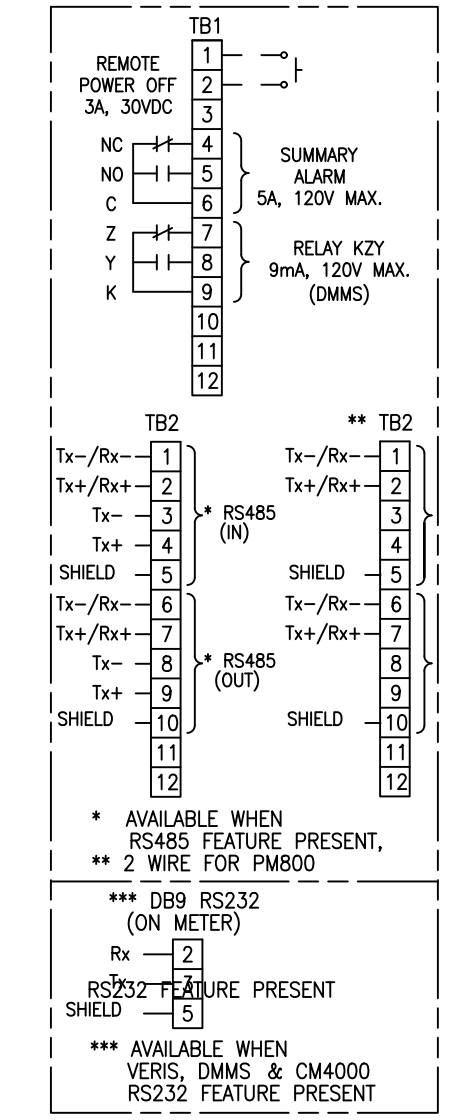
PROJECT: STD SUBMITTAL DRAWINGS SHEET 2 OF 3

DWG NO: 90-505002-00  
REV. 2  
DRAWN: YRS 14-JAN-02  
ENGINEER: J CHEN 14-JAN-02  
APPROVED: I KENNEDY 14-JAN-02

THIRD ANGLE PROJ.



**PMM CONTROL CONNECTIONS**



SEE SHEET 1  
NOTES: UNLESS OTHERWISE SPECIFIED.

SHT	DRAWING NUMBER	REVISION									REVISION DESCRIPTION	REVISION INITIATED BY (ECO/ENGR)	REVISION APPROVED BY
		2											
1	90-505002-00_1	11/23/2010									SE TEMPLATE INCORPORATED	E.D.	E.D.
2	90-505002-00_2	11/23/2010									SE TEMPLATE INCORPORATED	E.D.	E.D.
3	90-505002-00_3	11/23/2010									SE TEMPLATE INCORPORATED	E.D.	E.D.

NOTE:  
SEE BELOW FOR PREVIOUS REVISIONS.

REVISIONS			
REV	DESCRIPTION	DATE	APPROVED
A00	NEW RELEASE ECN-002680	6/12/2002	I KENNEDY
B00	REVISED PER ECN-002822	8/21/2002	I KENNEDY
C00	REVISED PER ECN-003493	6/6/2005	I KENNEDY
1	REVISED PER ECO BR-3819	9/15/2009	RH
3	REVISED PER XFMR CHANGE	4/3/2017	G. RAMIREZ

FILE: 90-505002-00REV3	INITIALLY DRAWN BY: YRS	FILE REV: 3
INITIAL RELEASE: 14-JAN-02	INITIALLY APPROVED BY: JC/IK	DATE: 3-ABR-2017