

LINETYPE LEGEND:

---	MECHANICAL ENCLOSURES
---	AC CABLE - PROVIDED BY OTHERS
—	AC BUS (MBP)
—	BUS CONNECTIONS FOR BREAKERS
—	DC BUS

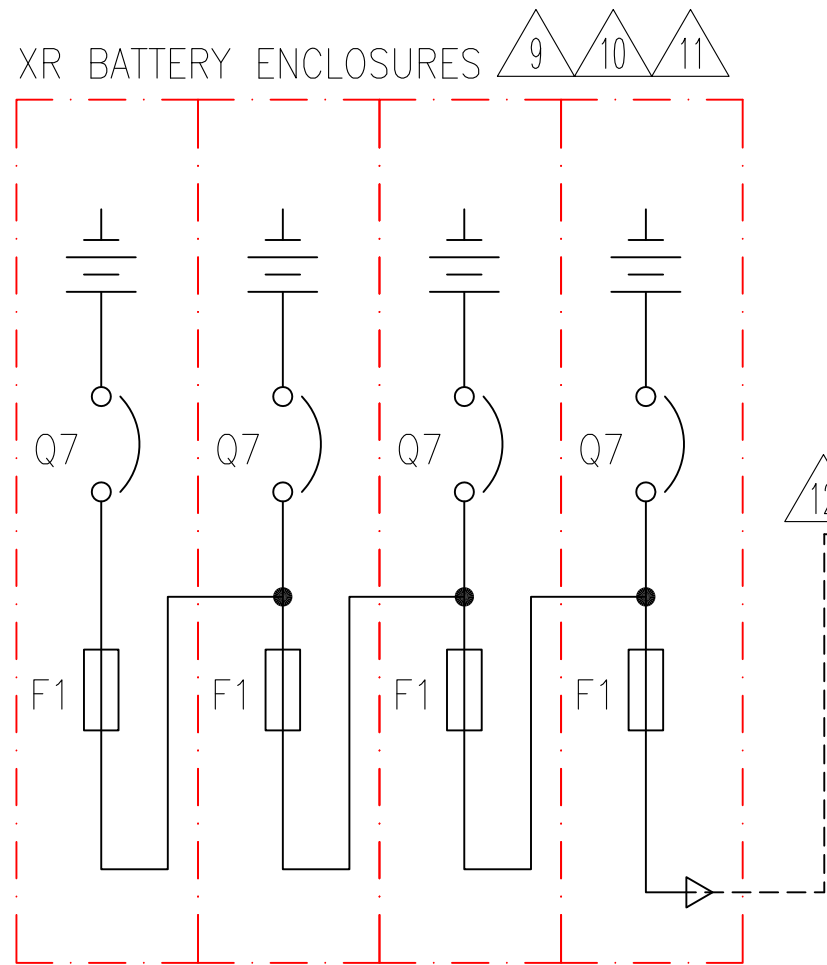
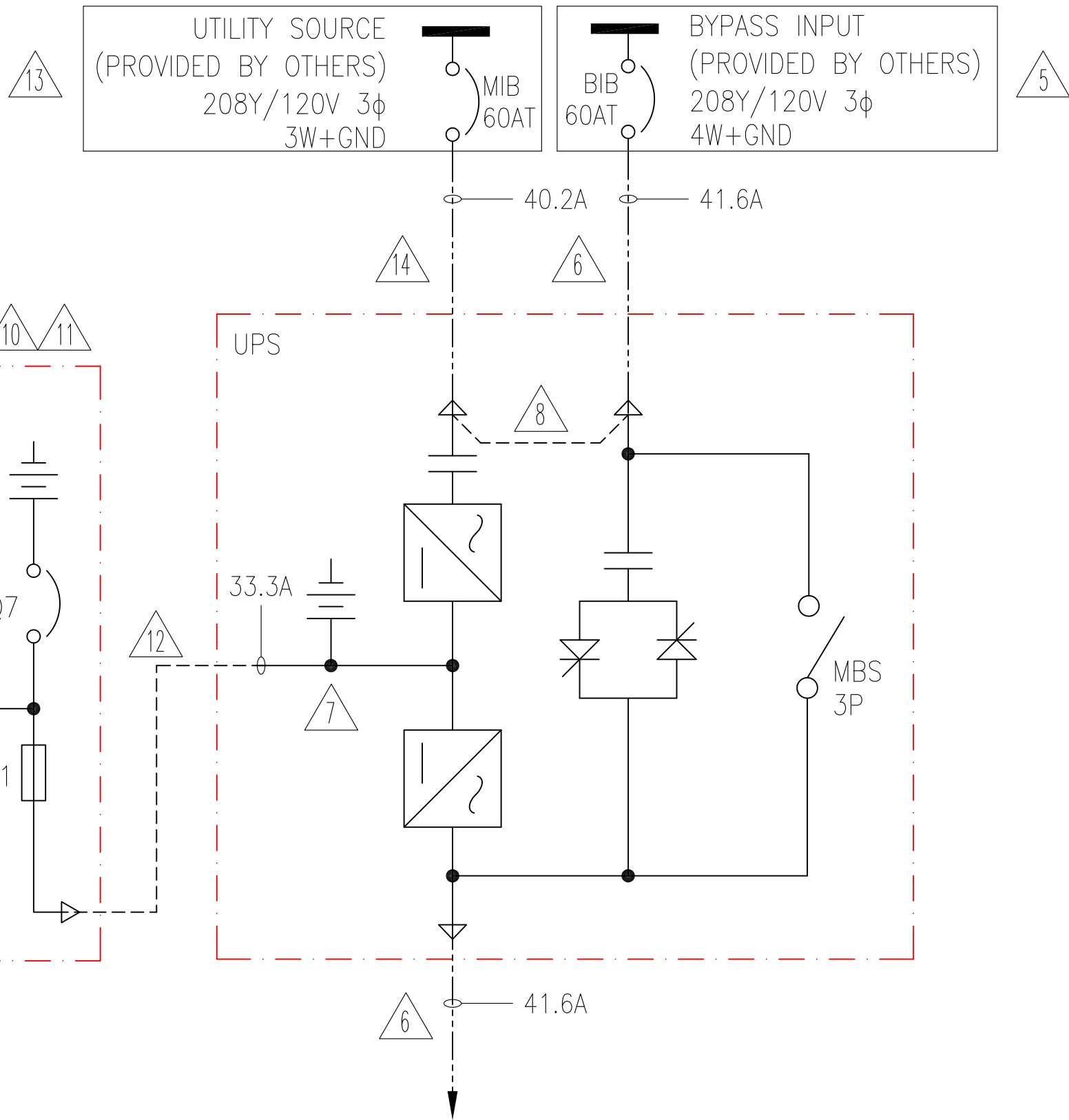
- NOTES:**
1. INSTALLATION SHALL COMPLY WITH ALL APPLICABLE NATIONAL, STATE AND LOCAL CODES.
 2. PLEASE REFER TO PRODUCT DOCUMENTATION FOR ADDITIONAL DETAILS.
 3. DRAWING DEPICTS POWER SYSTEM CONNECTIONS AND IS NOT REPRESENTATIVE OF PHYSICAL LAYOUT, PLEASE REFER TO MECHANICAL DRAWINGS FOR PHYSICAL LAYOUT.
 4. CABLE LUGS ARE PROVIDED BY OTHERS.
 - △5. AC SOURCE SHALL BE 208VAC, 4 WIRE, WYE CONNECTED, 3φ (CONTACT SCHNEIDER ELECTRIC IF OTHER)
 - △6. AC CABLING SHALL BE 600V RATED, 4 WIRE + GROUND, AND SHALL BE RUN IN SEPARATE CONDUITS.
 - △7. DC SOURCE SHALL BE 384VDC WITH CENTER TAP, 3 WIRE + GROUND.
 - △8. SINGLE MAINS INSTALLATION IS A DEFAULT. BRIDGE BUS BARS SHALL BE REMOVED FOR DUAL MAINS INSTALLATIONS.
 - △9. XR BATTERY ENCLOSURE IS AVAILABLE WITHOUT BREAKER WITH DC FUSE ONLY
 - △10. UP TO FOUR XR BATTERY ENCLOSURES MAY BE CONNECTED TO THE UPS TO EXTEND BACKUP TIME.
 - △11. EXTERNAL BATTERY CABINET IS OPTIONAL. BAYING KITS SHALL BE PURCHASED AS AN OPTION. BATTERY SIZING IS BASED ON A MAXIMUM 1 VOLT DROP PER HALF-STRING AT NOMINAL RATED DC CURRENT. CE SHALL ADJUST CABLE SIZE BASED ON INSTALLATION PARAMETERS.
 - △12. AC SOURCE SHALL BE 208VAC, 3 WIRE, WYE CONNECTED, 3φ (CONTACT SCHNEIDER ELECTRIC IF OTHER).
 - △13. AC CABLING SHALL BE 600V RATED, 3 WIRE + GROUND, AND SHALL BE RUN IN SEPARATE CONDUITS.

THIS DRAWING AND SPECIFICATIONS HEREIN ARE THE PROPERTY OF SCHNEIDER ELECTRIC AND SHALL NOT BE COPIED, REPRODUCED OR USED IN WHOLE OR IN PART, AS THE BASIS FOR THE MANUFACTURE OR SALE OF ITEMS WITHOUT WRITTEN PERMISSION FROM SCHNEIDER ELECTRIC. THIS DRAWING IS BASED UPON LATEST AVAILABLE INFORMATION AND IS SUBJECT TO CHANGE WITHOUT NOTICE.



TITLE: SMART-UPS VT, PARALLEL CAPABLE INPUT: 208VAC, 3φ, DUAL MAINS OUTPUT: 208VAC, 15kVA BAYED XR BATTERY ENCLOSURES SYSTEM ONE LINE DIAGRAM	DWG NO: SUVTP15KF2C1-SD	REV. 1
PROJECT: SUBMITTAL DRAWINGS SHEET 1 OF 2	DRAWN BY: V BUSH/BALA	29-OCT-15
	ENGINEER: M MAISSY	29-OCT-15
	APPROVED: A WARNER	29-OCT-15
		PROJ ANGLE N.A.

DUAL MAINS, W/BAYED XR BATTERY CABINETS



LINETYPE LEGEND:

	MECHANICAL ENCLOSURES
	AC CABLE - PROVIDED BY OTHERS
	AC BUS (MBP)
	BUS CONNECTIONS FOR BREAKERS
	DC BUS

- NOTES:**
1. INSTALLATION SHALL COMPLY WITH ALL APPLICABLE NATIONAL, STATE AND LOCAL CODES.
 2. PLEASE REFER TO PRODUCT DOCUMENTATION FOR ADDITIONAL DETAILS.
 3. DRAWING DEPICTS POWER SYSTEM CONNECTIONS AND IS NOT REPRESENTATIVE OF PHYSICAL LAYOUT, PLEASE REFER TO MECHANICAL DRAWINGS FOR PHYSICAL LAYOUT.
 4. CABLE LUGS ARE PROVIDED BY OTHERS.
- △5. AC SOURCE SHALL BE 208VAC, 4 WIRE, WYE CONNECTED, 3φ (CONTACT SCHNEIDER ELECTRIC IF OTHER)
- △6. AC CABLING SHALL BE 600V RATED, 4 WIRE + GROUND, AND SHALL BE RUN IN SEPARATE CONDUITS.
- △7. DC SOURCE SHALL BE 384VDC WITH CENTER TAP, 3 WIRE + GROUND.
- △8. SINGLE MAINS INSTALLATION IS A DEFAULT. BRIDGE BUS BARS SHALL BE REMOVED FOR DUAL MAINS INSTALLATIONS.
- △9. XR BATTERY ENCLOSURE IS AVAILABLE WITHOUT BREAKER WITH DC FUSE ONLY
- △10. UP TO FOUR XR BATTERY ENCLOSURES MAY BE CONNECTED TO THE UPS TO EXTEND BACKUP TIME.
- △11. EXTERNAL BATTERY CABINET IS OPTIONAL. BAYING KITS SHALL BE PURCHASED AS AN OPTION. BATTERY SIZING IS BASED ON A MAXIMUM 1 VOLT DROP PER HALF-STRING AT NOMINAL RATED DC CURRENT. CE SHALL ADJUST CABLE SIZE BASED ON INSTALLATION PARAMETERS.
- △12. DC CABLING SHALL BE 600V RATED, 3W+GND, SHALL BE RUN IN SEPARATE CABLING CONDUITS.
- △13. AC SOURCE SHALL BE 208VAC, 3 WIRE, WYE CONNECTED, 3φ (CONTACT SCHNEIDER ELECTRIC IF OTHER).
- △14. AC CABLING SHALL BE 600V RATED, 3 WIRE + GROUND, AND SHALL BE RUN IN SEPARATE CONDUITS.

UPS SYSTEM OUTPUT
15kVA, 208Y/120V, 3φ
4W+GND

DUAL MAINS, W/REMOTE XR BATTERY CABINETS

THIS DRAWING AND SPECIFICATIONS HEREIN ARE THE PROPERTY OF SCHNEIDER ELECTRIC AND SHALL NOT BE COPIED, REPRODUCED OR USED IN WHOLE OR IN PART, AS THE BASIS FOR THE MANUFACTURE OR SALE OF ITEMS WITHOUT WRITTEN PERMISSION FROM SCHNEIDER ELECTRIC. THIS DRAWING IS BASED UPON LATEST AVAILABLE INFORMATION AND IS SUBJECT TO CHANGE WITHOUT NOTICE.



TITLE: SMART-UPS VT, PARALLEL CAPABLE
INPUT: 208VAC, 3φ, DUAL MAINS
OUTPUT: 208VAC, 15kVA
REMOTE XR BATTERY ENCLOSURES
SYSTEM ONE LINE DIAGRAM

DWG NO:	SUVTP15KF2C1-SD	REV:	1
DRAWN BY:	V BUSH/BALA	29-OCT-15	PROJ
ENGINEER:	M MAISSY	29-OCT-15	ANGLE
APPROVED:	A WARNER	29-OCT-15	N.A.

PROJECT: SUBMITTAL DRAWINGS | SHEET 2 OF 2