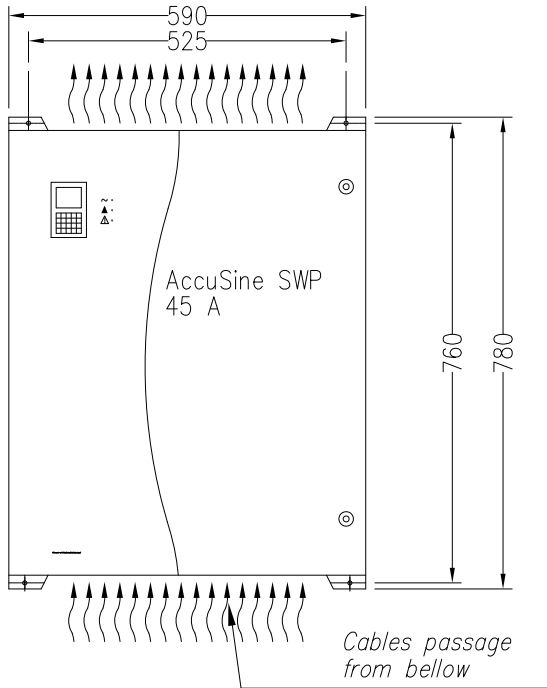
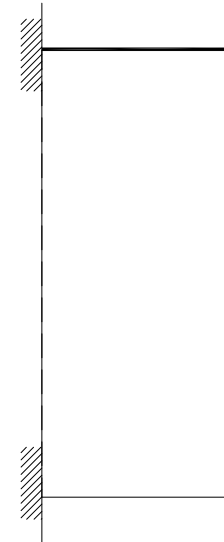


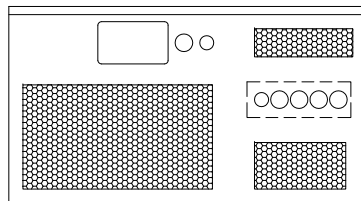
TOP VIEW



FRONT VIEW



SIDE VIEW



BOTTOM VIEW

---	---
Weight (kg)	110
Air extraction (m <sup>3</sup> /h)	1000
Heat Losses (kw)	1.9

THIS DRAWING AND SPECIFICATIONS HEREIN ARE THE PROPERTY OF SCHNEIDER ELECTRIC AND SHALL NOT BE COPIED, REPRODUCED OR USED IN WHOLE OR IN PART, AS THE BASIS FOR THE MANUFACTURE OR SALE OF ITEMS WITHOUT WRITTEN PERMISSION FROM SCHNEIDER ELECTRIC. THIS DRAWING IS BASED UPON LATEST AVAILABLE INFORMATION AND IS SUBJECT TO CHANGE WITHOUT NOTICE.



TITLE:  
AccuSine SWP  
45A  
Overall Dimension

DWG NO: PCS045Y4IP20U

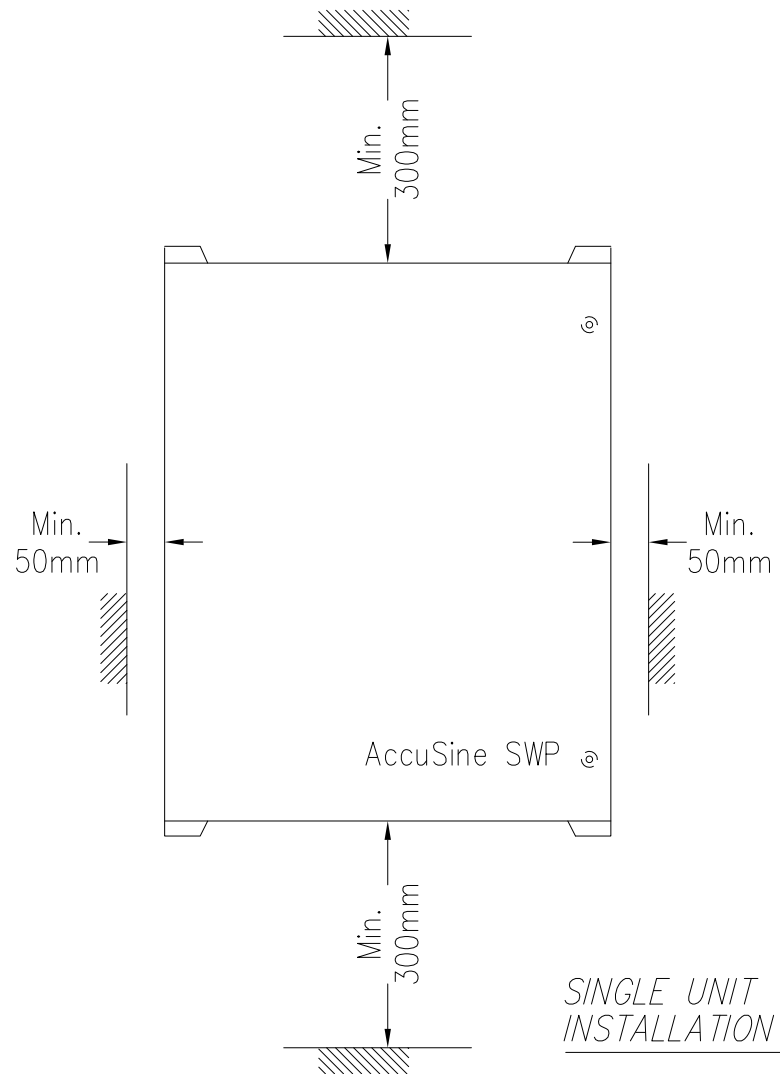
REV. 0

DRAWN: T.Chung 30-Jan-13

ENGINEER: K.Dooley 30-Jan-13

PROJECT: Submittal Drawing SHEET 1 OF 4

APPROVED: M.Weisenbloom 30-Jan-13



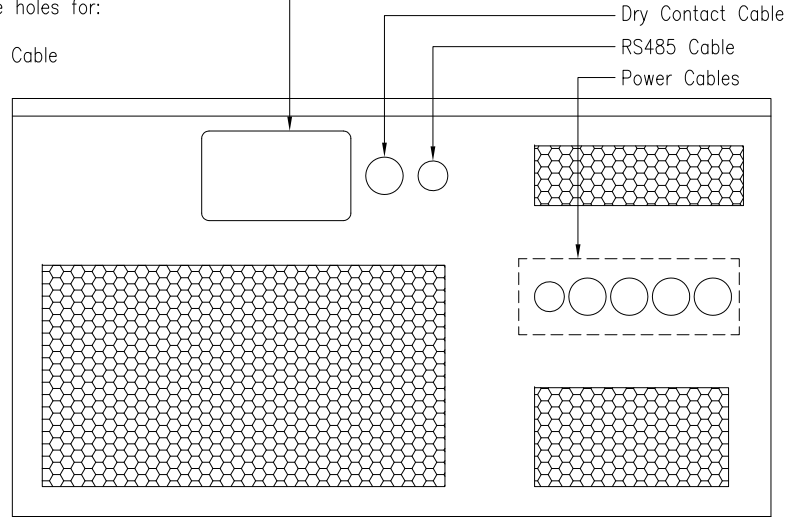
THIS DRAWING AND SPECIFICATIONS HEREIN ARE THE PROPERTY OF SCHNEIDER ELECTRIC AND SHALL NOT BE COPIED, REPRODUCED OR USED IN WHOLE OR IN PART, AS THE BASIS FOR THE MANUFACTURE OR SALE OF ITEMS WITHOUT WRITTEN PERMISSION FROM SCHNEIDER ELECTRIC. THIS DRAWING IS BASED UPON LATEST AVAILABLE INFORMATION AND IS SUBJECT TO CHANGE WITHOUT NOTICE.



TITLE:	AccuSine SWP 45A Installation Detail	DWG NO:	PCS045Y4IP20U	REV.	0
DRAWN:	T.Chung	30-Jan-13			
ENGINEER:	K.Dooley	30-Jan-13			
PROJECT:	Submittal Drawing	SHEET 2 OF 4	APPROVED:	M.Weisenbloom	30-Jan-13

Plastic cover  
 For use to make holes for:

- CT Cables
- Parallel Unit Cable



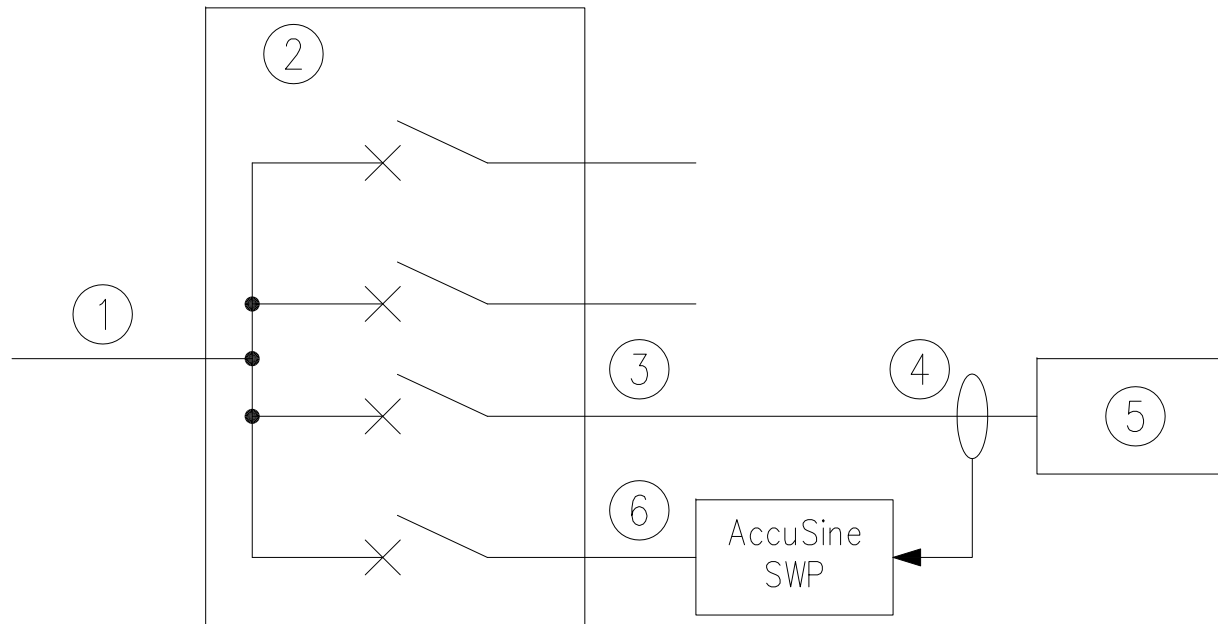
Bottom View

THIS DRAWING AND SPECIFICATIONS HEREIN ARE THE PROPERTY OF SCHNEIDER ELECTRIC AND SHALL NOT BE COPIED, REPRODUCED OR USED IN WHOLE OR IN PART, AS THE BASIS FOR THE MANUFACTURE OR SALE OF ITEMS WITHOUT WRITTEN PERMISSION FROM SCHNEIDER ELECTRIC. THIS DRAWING IS BASED UPON LATEST AVAILABLE INFORMATION AND IS SUBJECT TO CHANGE WITHOUT NOTICE.



TITLE:	AccuSine SWP 45A Cable Entry	DWG NO:	PCS045Y4IP20U	REV:	0
DRAWN:	T.Chung	30-Jan-13	ENGINEER:	K.Dooley	30-Jan-13
PROJECT: Submittal Drawing	SHEET 3 OF 4	APPROVED:	M.Weisenbloom	30-Jan-13	

Single Line Diagram for 45A Single Unit.



Note

- ① Utility network
- ② Low voltage distribution switchboard
- ③ Harmonic current to be compensated
- ④ Current sensor (CT)
- ⑤ Load to be compensated
- ⑥ Harmonic compensating current

THIS DRAWING AND SPECIFICATIONS HEREIN ARE THE PROPERTY OF SCHNEIDER ELECTRIC AND SHALL NOT BE COPIED, REPRODUCED OR USED IN WHOLE OR IN PART, AS THE BASIS FOR THE MANUFACTURE OR SALE OF ITEMS WITHOUT WRITTEN PERMISSION FROM SCHNEIDER ELECTRIC. THIS DRAWING IS BASED UPON LATEST AVAILABLE INFORMATION AND IS SUBJECT TO CHANGE WITHOUT NOTICE.



TITLE: AccuSine SWP 45A Single Line Diagram		DWG NO: PCS045Y4IP20U	REV: 0
DRAWN: T.Chung		30-Jan-13	
ENGINEER: K.Dooley		30-Jan-13	
PROJECT: Submittal Drawing	SHEET 4 OF 4	APPROVED: M.Weisenbloom	30-Jan-13