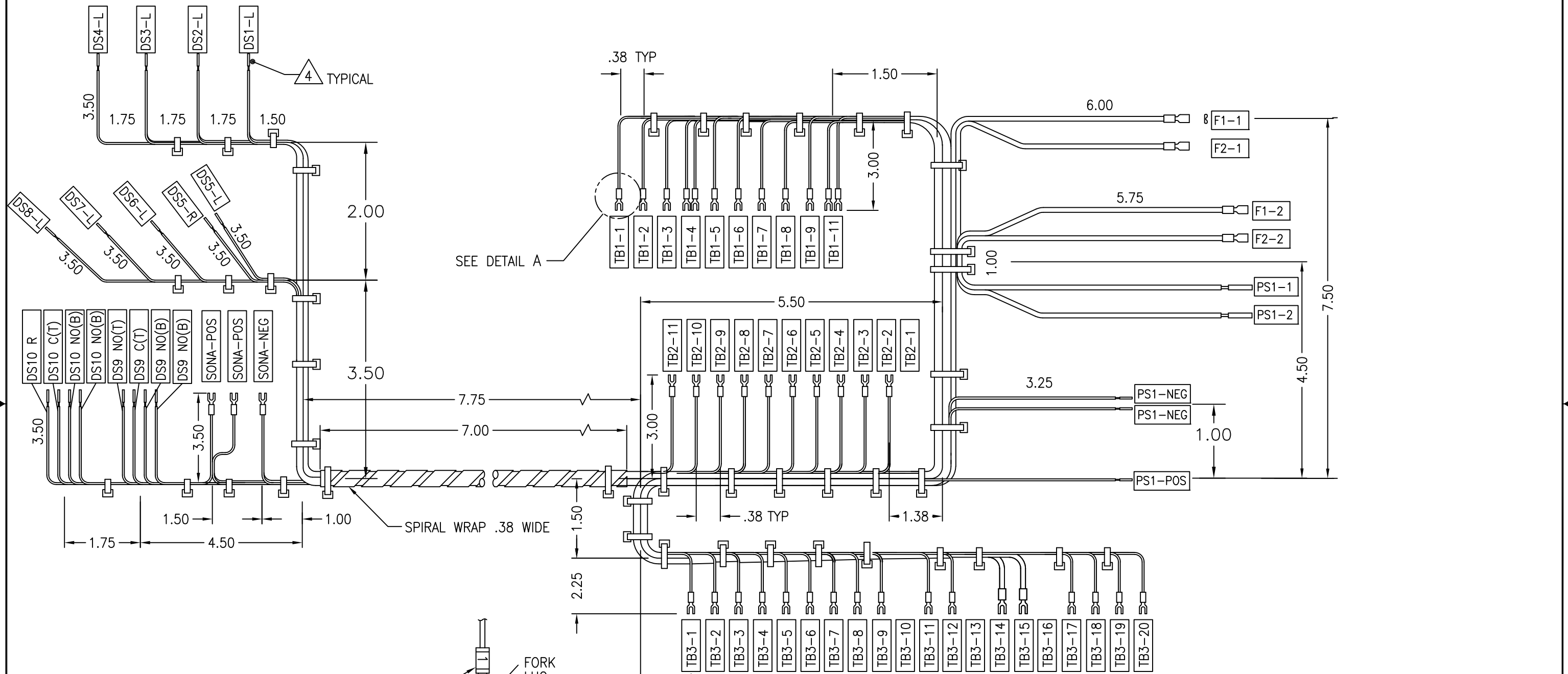
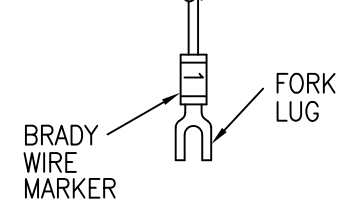


ALL TECHNICAL INFORMATION CONTAINED IN THIS DOCUMENT IS THE EXCLUSIVE PROPERTY OF SCHNEIDER ELECTRIC INDUSTRIES SAS AND MAY NEITHER BE USED NOR DISCLOSED WITHOUT ITS PRIOR WRITTEN CONSENT.

REVISIONS			
REV	DESCRIPTION	DATE	APPROVED
1	NEW RELEASE PARTSPEC	08/27/08	VNE



- 4 SEMI-STRIP LENGTH .38
- 3. WIRE LIST REF. NO. 94-161408-01.
- 2. WIRE LENGTHS ARE FROM ADJACENT INTERSECTIONS.
- 1. TIE WRAP LOCATIONS ARE APPROXIMATE.



DETAIL A
SCALE: NONE
TYPICAL

LEGEND	
	CONNECTOR OR LUG TERMINATED & LABELED
	APPROXIMATE TIE WRAP LOCATION

UNLESS OTHERWISE SPECIFIED DIMENSIONS ARE IN INCHES AND [MILLIMETERS].
 TOLERANCES ARE:
 DECIMALS [MILLIMETERS]
 .X=± .1 X=± 2.54
 .XX=± .03 .X=± .7
 .XXX=± .010 .XX=± .25
 ANGLES ± 0°30'
 MATERIAL
 FINISH

CONTRACT NO.	
APPROVALS	DATE
DRAWN V. N. EALEY	08/27/08
CHECKED JESSE SMITH	08/27/08
ISSUED S. DAS	08/27/08
DO NOT SCALE DRAWING	

Schneider Electric SCHNEIDER ELECTRIC
 Critical Power & Cooling Service Division
 1660 Scenic Avenue
 Costa Mesa, CA. 92626 U.S.A.

WIRE HARNESS
REMOTE ALARM STATUS PANEL
 G3K, G4K, G5K, GPW & COMET SINGLE UPS (W/SECI)

SIZE B	CAGE CODE 9L985	DWG NO. 84-161408-01	REV. 1
SCALE NONE	CAD 84-161408-01	SHEET 1 OF 1	