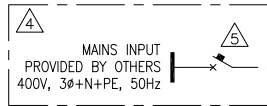


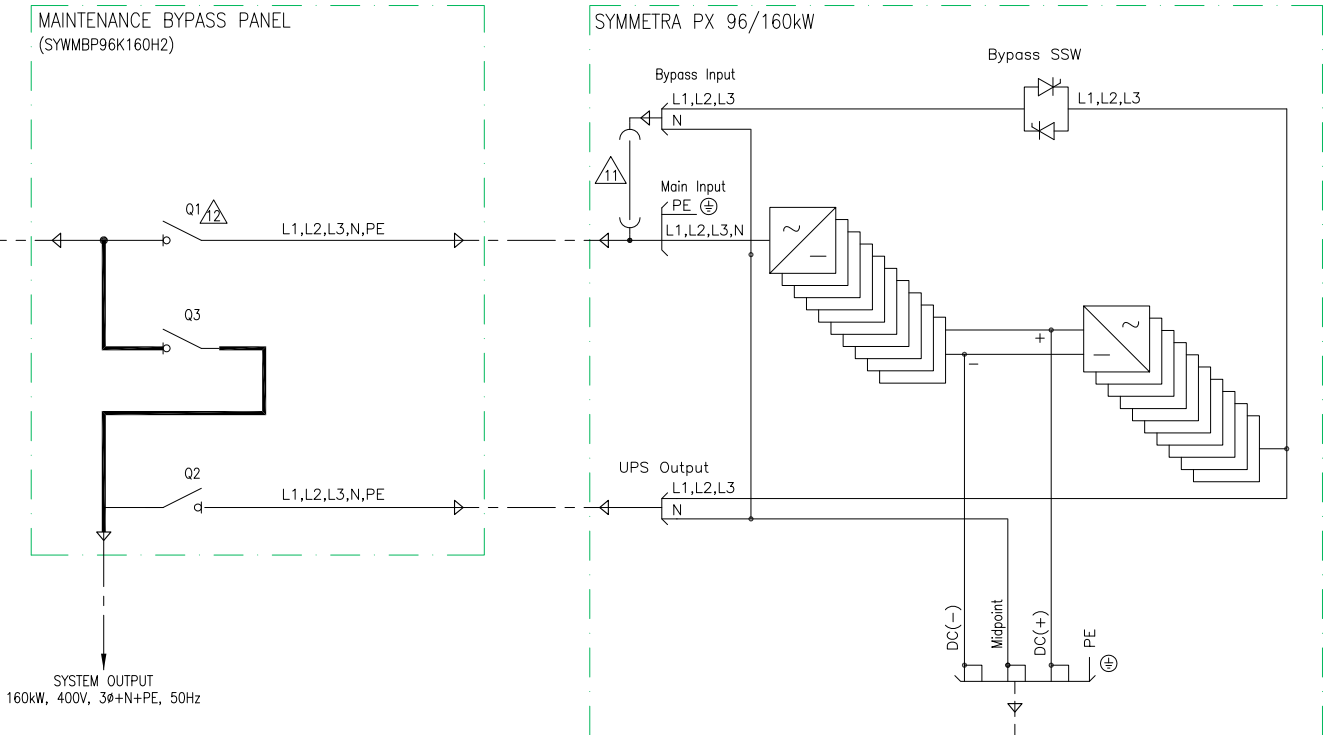
MAINTENANCE BYPASS PANEL (SYWMBP96K160H2)					
DEVICE ID	RATING	TYPE	MAKE	MODEL	ACCESSORIES
Q1	400A	SWITCH DISCONNECT, 4-POLE	SCHNEIDER ELECTRIC	LV432696	1 AUX. SWITCH
Q2	250A	SWITCH DISCONNECT, 4-POLE	SCHNEIDER ELECTRIC	LV432757	1 AUX. SWITCH
Q3	250A	SWITCH DISCONNECT, 4-POLE	SCHNEIDER ELECTRIC	LV432757	1 AUX. SWITCH

BATTERY CABINET (SYPBV96K160H)				
DC BREAKER	400A	DC BREAKER, 3-POLE	SCHNEIDER ELECTRIC	NSX400 DC MP1
				1-SHUNT TRIP (230,208-277VAC), 1 AUX. SWITCH



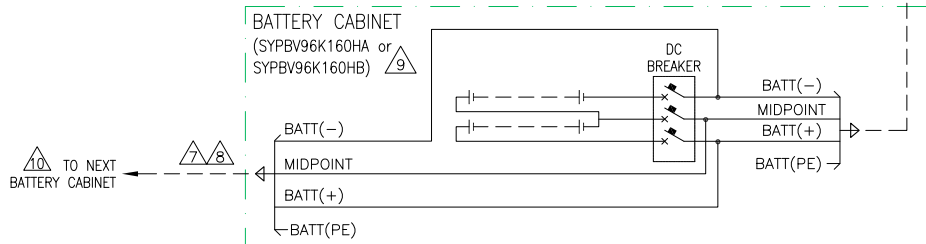
DEVICE	NOMINAL CURRENT		RATED SHORT CIRCUIT CURRENT	
	96KW	160KW	WITH UPSTREAM CB	WITHOUT UPSTREAM CB
UPS AC IN	146A	243A	30KA SYMMETRICAL	13KA SYMMETRICAL
UPS AC OUT	139A	231A	30KA SYMMETRICAL	13KA SYMMETRICAL

LEGEND:	
	AC CABLE (PROVIDED BY OTHERS)
	DC CABLE (PROVIDED BY OTHERS)
	AC BUS



**NOTES:**

- INSTALLATION MUST COMPLY WITH ALL APPLICABLE LOCAL AND NATIONAL CODES.
- REFER TO PRODUCT DOCUMENTATION FOR ADDITIONAL DETAILS PRIOR TO INSTALLATION AND SITE PREPARATION WORK.
- DRAWING DEPICTS POWER SYSTEM CONNECTIONS AND IS NOT REPRESENTATIVE OF PHYSICAL LAYOUT, PLEASE REFER TO MECHANICAL DRAWINGS FOR PHYSICAL LAYOUT.
- 3x400/230V TN-S (PROVIDED BY OTHERS). FOR OTHER EARTHING PRINCIPLES, PLEASE CONTACT Schneider Electric.
- RECOMMENDED UPSTREAM PROTECTION IS A MINIMUM RATING TO SUPPORT MAXIMUM CURRENT, WITHOUT SELECTIVITY.  
FOR 96kVA: NSX250F TMD200, 3P CB, MAXIMUM INPUT CURRENT IS 169A.  
FOR 160kVA: NSX400F Mic2.3, 3P, 320A SETTING CB, MAXIMUM INPUT CURRENT IS 281A.  
IF SELECTIVITY IS REQUIRED, PLEASE CONTACT Schneider Electric.
- ALL AC POWER CABLING IS L1, L2, L3, N, PE.
- DC CABLING TO BE 600V RATED, 2-WIRE + MIDPOINT, EACH CIRCUIT TO BE RUN IN SEPARATE CONDUITS, BATTERY+, BATTERY-, +MIDPOINT.
- CABLING PROVIDED BY OTHERS; SEE BATTERY INSTALLATION MANUAL FOR CABLING DETAILS.
- SYPBV96K160H: EMPTY BATTERY CABINET.  
SYPBV96K160HA CONTAINS 32X EXIDE XP12V1800.  
SYPBV96K160HB CONTAINS 32X EXIDE XP12V2500.
- REFER TO PRODUCT INSTALLATION MANUAL FOR CONNECTION OF TWO OR MORE BATTERY CABINETS.  
MAXIMUM (4) BATTERY ENCLOSURES MAY BE USED WITH THE SYSTEM.
- TO BE WIRED FOR SINGLE MAINS CONFIGURATIONS ONLY.
- NEUTRAL WIRE IS BYPASSED THROUGH Q1 SWITCH.



THIS DRAWING AND SPECIFICATIONS HEREIN ARE THE PROPERTY OF SCHNEIDER ELECTRIC AND SHALL NOT BE COPIED, REPRODUCED OR USED IN WHOLE OR IN PART, AS THE BASIS FOR THE MANUFACTURE OR SALE OF ITEMS WITHOUT WRITTEN PERMISSION FROM SCHNEIDER ELECTRIC. THIS DRAWING IS BASED UPON LATEST AVAILABLE INFORMATION AND IS SUBJECT TO CHANGE WITHOUT NOTICE.



TITLE: SYMMETRA PX  
Input: 400/230VAC, 3φ, SINGLE MAIN  
Output: 400/230VAC AND 400VAC, 3φ, 160kW  
UPS WITH SYWMBP96K160H2  
SYSTEM SINGLE-LINE DIAGRAM

PROJECT: SUBMITTAL DRAWINGS SHEET 1 OF 1

DWG NO: SY96K160WMBPH2-SD REV. 0

DRAWN: BALAMURUGAN/S CUNHA 09-JUN-14  
ENGINEER: J XIE/Q WANG 09-JUN-14  
APPROVED: M SAAS/D FOURNIU 09-JUN-14

ANGLE PROJECTION: N/A