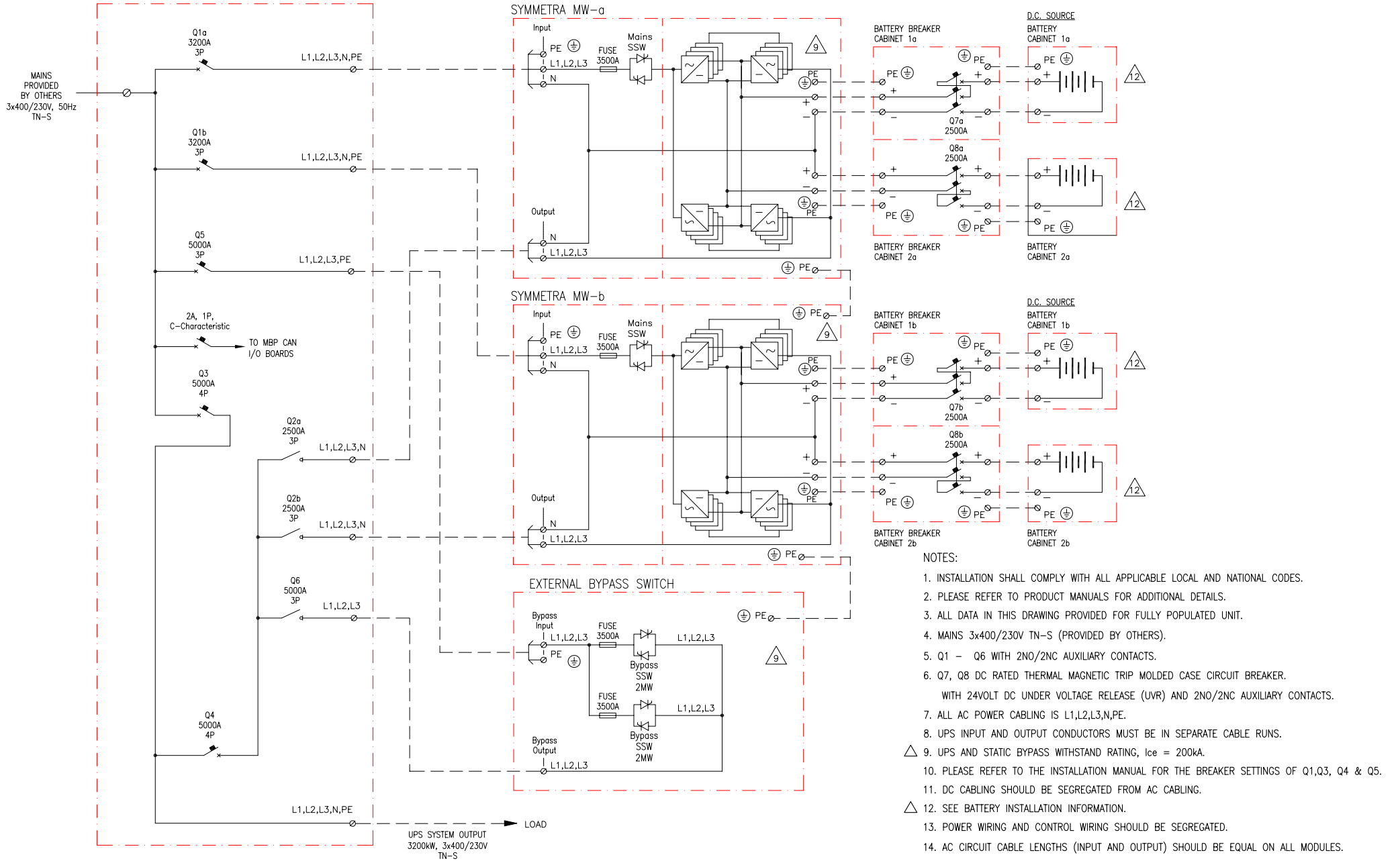


MAINTENANCE BYPASS PANEL (MBP)



- NOTES:
1. INSTALLATION SHALL COMPLY WITH ALL APPLICABLE LOCAL AND NATIONAL CODES.
 2. PLEASE REFER TO PRODUCT MANUALS FOR ADDITIONAL DETAILS.
 3. ALL DATA IN THIS DRAWING PROVIDED FOR FULLY POPULATED UNIT.
 4. MAINS 3x400/230V TN-S (PROVIDED BY OTHERS).
 5. Q1 - Q6 WITH 2NO/2NC AUXILIARY CONTACTS.
 6. Q7, Q8 DC RATED THERMAL MAGNETIC TRIP MOLDED CASE CIRCUIT BREAKER.
WITH 24VOLT DC UNDER VOLTAGE RELEASE (UVR) AND 2NO/2NC AUXILIARY CONTACTS.
 7. ALL AC POWER CABLING IS L1,L2,L3,N,PE.
 8. UPS INPUT AND OUTPUT CONDUCTORS MUST BE IN SEPARATE CABLE RUNS.
 9. UPS AND STATIC BYPASS WITHSTAND RATING, I_{ce} = 200kA.
 10. PLEASE REFER TO THE INSTALLATION MANUAL FOR THE BREAKER SETTINGS OF Q1,Q3, Q4 & Q5.
 11. DC CABLING SHOULD BE SEGREGATED FROM AC CABLING.
 12. SEE BATTERY INSTALLATION INFORMATION.
 13. POWER WIRING AND CONTROL WIRING SHOULD BE SEGREGATED.
 14. AC CIRCUIT CABLE LENGTHS (INPUT AND OUTPUT) SHOULD BE EQUAL ON ALL MODULES.
 15. DC CIRCUIT CABLE LENGTHS SHOULD BE EQUAL ON ALL MODULES.
 16. - - - - - = CABLING PROVIDED BY OTHERS.

THIS DRAWING AND SPECIFICATIONS HEREIN ARE THE PROPERTY OF SCHNEIDER ELECTRIC AND SHALL NOT BE COPIED, REPRODUCED OR USED IN WHOLE OR IN PART, AS THE BASIS FOR THE MANUFACTURE OR SALE OF ITEMS WITHOUT WRITTEN PERMISSION FROM SCHNEIDER ELECTRIC. THIS DRAWING IS BASED UPON LATEST AVAILABLE INFORMATION AND IS SUBJECT TO CHANGE WITHOUT NOTICE.



TITLE: SYMMETRA MW
 Input: 400/230V AC 3PH SINGLE MAINS
 Output: 400V AC 3PH
 1600kW 2 MODULE CAPACITY
 SYSTEM ONE LINE DIAGRAM

DWG NO:	SYMF1600K3200H1C2-SD	REV:	4
DRAWN:	BALAMURUGAN	01-MAR-11	ANGLE
ENGINEER:	S.ANDERSEN	01-MAR-11	PROJECTION:
PROJECT:	SUBMITTAL DRAWINGS	SHEET 1 OF 1	APPROVED:
			C.LARSEN 01-MAR-11