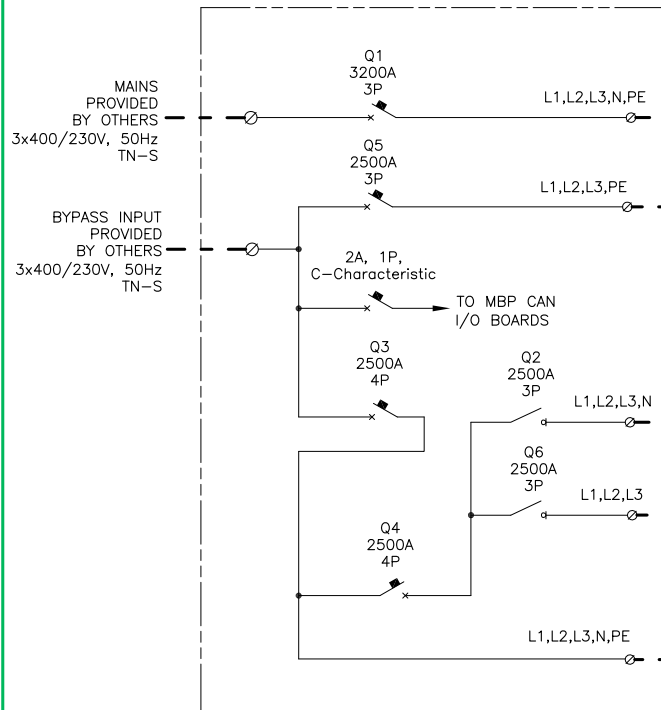
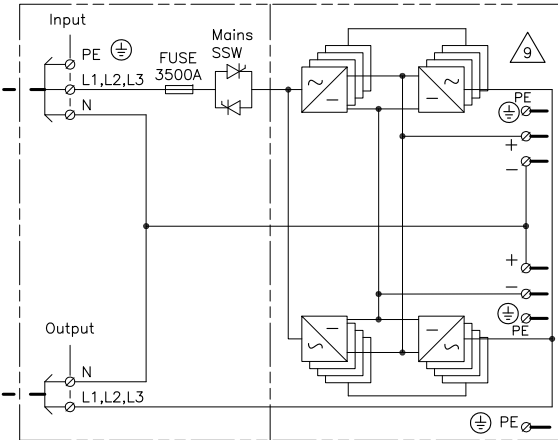


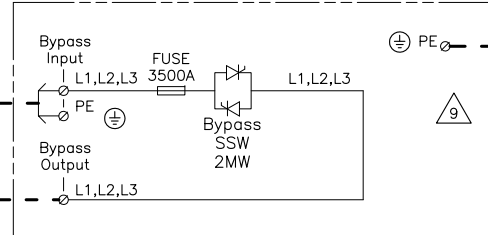
MAINTENANCE BYPASS PANEL (MBP)



SYMMETRA MW



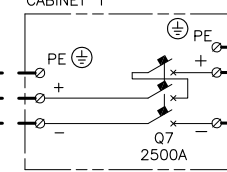
EXTERNAL BYPASS SWITCH



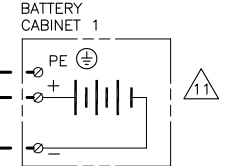
UPS SYSTEM OUTPUT
1600kW, 3x400/230V
TN-S

LOAD

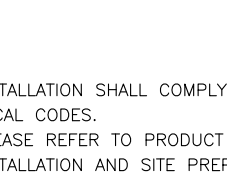
BATTERY BREAKER
CABINET 1



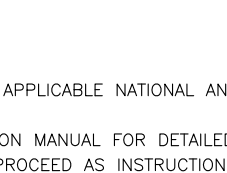
D.C. SOURCE
BATTERY CABINET 1



BATTERY BREAKER
CABINET 2



BATTERY CABINET 2



NOTES:

1. INSTALLATION SHALL COMPLY WITH ALL APPLICABLE NATIONAL AND LOCAL CODES.
2. PLEASE REFER TO PRODUCT INSTALLATION MANUAL FOR DETAILED INSTALLATION AND SITE PREPARATION. PROCEED AS INSTRUCTIONS SPECIFY.
3. DRAWING DEPICTS POWER SYSTEM CONNECTIONS AND IS NOT REPRESENTATIVE OF PHYSICAL LAYOUT. PLEASE REFER TO MECHANICAL DRAWINGS FOR MORE SPECIFIC PHYSICAL DATA.
4. MAINS 3x400/230V TN-S (PROVIDED BY OTHERS)
5. Q1-Q5 WITH 2NO/2NC AUXILIARY CONTACTS.
6. Q7, Q8 DC RATED THERMAL MAGNETIC TRIP MOLDED CASE CIRCUIT BREAKER WITH 24VOLT DC UNDERVOLTAGE RELEASE (UVR) AND 2NO/2NC AUXILIARY CONTACTS.
7. PLEASE REFER TO THE INSTALLATION MANUAL FOR THE BREAKER SETTINGS OF Q1,Q3 & Q5.
8. UPS INPUT AND OUTPUT CONDUCTORS MUST BE IN SEPARATE CABLE RUNS.
- △ 9. UPS AND STATIC BYPASS WITHSTAND RATING, I_{cw} = 200kA
10. DC CABLING SHOULD BE SEGREGATED FROM AC CABLING
- △ 11. SEE BATTERY INSTALLATION INFORMATION
12. POWER WIRING AND CONTROL WIRING SHOULD BE SEGREGATED.
13. - - - - - = CABLING PROVIDED BY OTHERS
14. ALL AC POWER CABLING IS L1, L2, L3, N, PE
15. ALL DATA IN THIS DRAWING PROVIDED FOR FULLY POPULATED UNIT

THIS DRAWING AND SPECIFICATIONS HEREIN ARE THE PROPERTY OF SCHNEIDER ELECTRIC AND SHALL NOT BE COPIED, REPRODUCED OR USED IN WHOLE OR IN PART, AS THE BASIS FOR THE MANUFACTURE OR SALE OF ITEMS WITHOUT WRITTEN PERMISSION FROM SCHNEIDER ELECTRIC. THIS DRAWING IS BASED UPON LATEST AVAILABLE INFORMATION AND IS SUBJECT TO CHANGE WITHOUT NOTICE.



TITLE: SYMMETRA MW UPS
INPUT: 400V, 3PH, DUAL MAINS
OUTPUT: 400V, 3PH, 1600KW
SYSTEM ONE LINE DIAGRAM

DWG NO: SYMF1600K1600H2C1-SD
DRAWN: BALAMURGAN/M CRAVEN 07/03/12
ENGINEER: B.H. NIELSEN 07/03/12
APPROVED: C LARSEN 07/03/12

REV: 5
PROJ ANGLE
N.A.

PROJECT: STANDARD PRODUCT DRAWINGS SHEET 1 OF 1