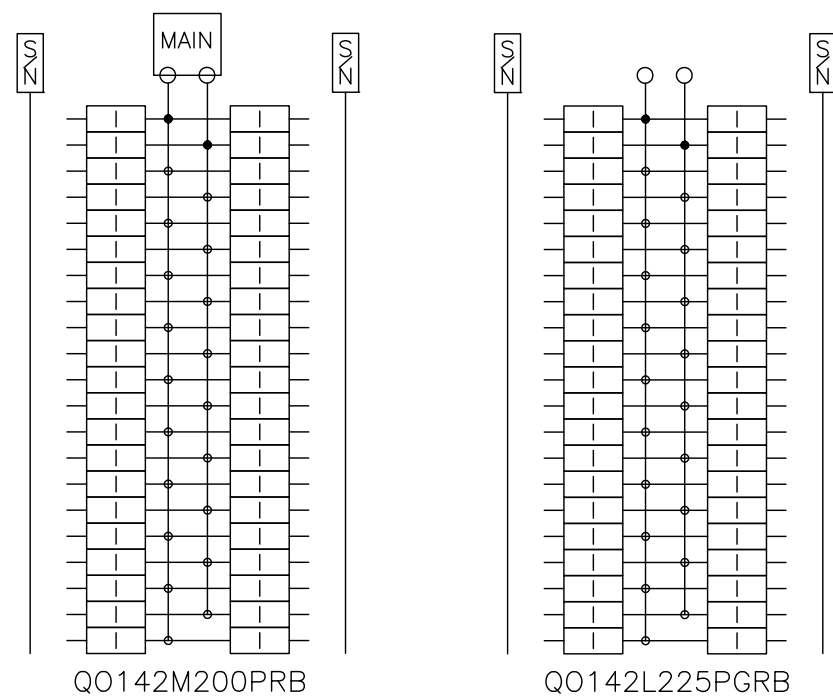
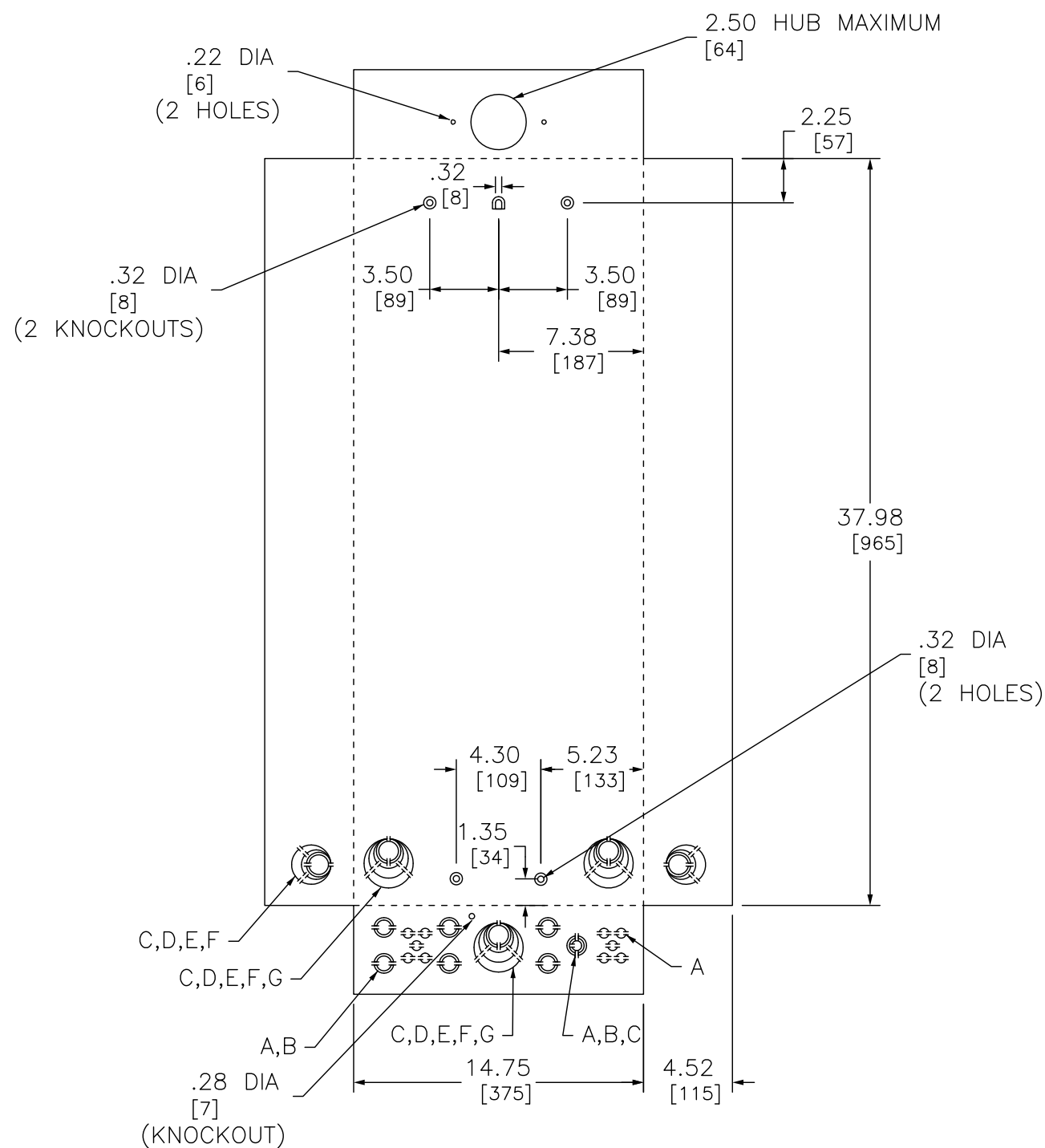


SYMBOL	KNOCKOUTS	
	IN	MM
A	.50	13
B	.75	19
C	1.00	25
D	1.25	32
E	1.50	38
F	2.00	51
G	2.50	64



DUAL DIMENSIONS: INCHES  
MILLIMETERS

CATALOG NUMBER	MAXIMUM SYSTEM VOLTAGE	MAINS AMPERE RATING	SPACES	MAXIMUM NUMBER OF SINGLE POLE CIRCUITS	MAIN WIRE SIZE AWG AL/CU
QO142M200PRB	120/240VAC 1Ø 3W	200	42	42	#4-300
QO142L225PGRB		225	42	42	#4-300

NOTES:  
 FINISH - GRAY BAKED ENAMEL ELECTRODEPOSITED OVER CLEANED PHOSPHATIZED STEEL.  
 UL LISTED - FILE E-6294  
 NEUTRALS - INSULATED GROUNDABLE.  
 LOAD CENTERS WITH "G" IN CATALOG NUMBER INCLUDE A FIELD INSTALLABLE EQUIPMENT GROUND BAR KIT.  
 WHEN MOUNTING THESE LOAD CENTERS, ALLOW 1.25 INCHES (32 MILLIMETERS) OF CLEARANCE ON HINGED SIDE FOR THE DOOR TO OPEN.  
 LOAD CENTERS WITH "P" IN CATALOG NUMBER INCLUDE EXTENDED NEUTRALS FROM PLUG ON NEUTRAL READY INTERIORS.

QO LOAD CENTERS  
 RAINPROOF NEMA TYPE 3R ENCLOSURE  
 SIDE HINGED OUTDOOR

**SQUARE D**  
 by Schneider Electric

DWG# PWFDS-SYRS-0055  
 NO.