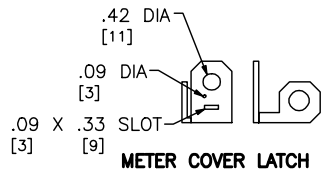
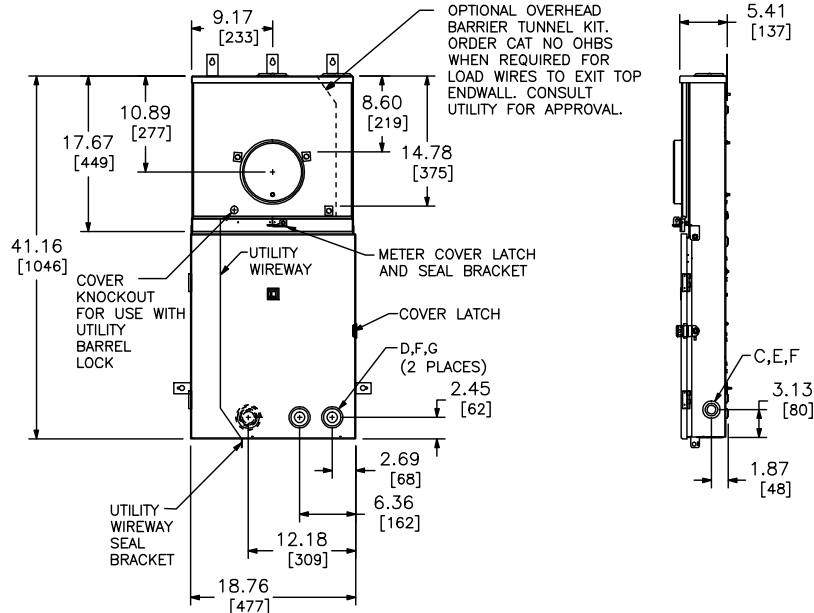


KNOCKOUTS				
SYMBOL	CONDUIT SIZE		HOLE DIA	
	IN	MM	IN	MM
A	.50	13	.87	22
B	.75	19	1.12	28
C	1.00	25	1.37	35
D	1.25	32	1.75	44
E	1.50	38	2.00	51
F	2.00	51	2.50	64
G	2.50	64	3.00	76
H	3.00	76	3.62	92

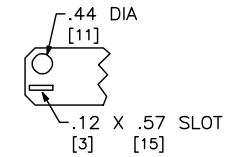


METER COVER LATCH



- ONE SINGLE POLE, ONE PLUG-ON SPACE TYPE QO. TWO POLE TYPE QO, QOA, OR QOC (125A MAX) MAY PLUG-ON TWO ADJACENT SPACES. TWO POLE TYPE QOC (150-200A) MAY PLUG ON FOUR ADJACENT SPACES.
- TWO SINGLE POLE, ONE PLUG-ON SPACE TYPE QOT OR ONE SINGLE POLE, ONE PLUG-ON SPACE TYPE QO. TWO POLE TYPES QO, QOA, OR QOC (125A MAX) MAY PLUG-ON TWO ADJACENT SPACES. TWO POLE TYPE QOC (150-200A) MAY PLUG ON FOUR ADJACENT SPACES.

TOTAL CIRCUIT BREAKER HANDLE RATING NOT TO EXCEED 160A PER CIRCUIT CONNECTOR.
 A SQUARE D UL LISTED SECONDARY SURGE ARRESTER MAY PLUG ON TWO ADJACENT SPACES. ORDER CATALOG NO Q02175SB.



SEAL BRACKET UTILITY WIREWAY

DUAL DIMENSIONS: INCHES MILLIMETERS

MAINS AMPERE RATING	FACTORY INSTALLED BYPASS TYPE	SHORT CIRCUIT CURRENT RATING	CATALOG NUMBER	SERIES	SPACES	MAXIMUM NUMBER OF SINGLE POLE QO CIRCUITS	LINE SIDE PHASE & NEUTRAL LUGS AWG/KCMIL	SERVICE GROUND LUG AWG
150	HORN	22K	QC2442M150SH	M01	24	42	#6-350 CU/AL	#14-2/0 CU #12-2/0 AL
200	NONE		QC2442M200S					
	HORN		QC2442M200SS					
			QC2442M200SH					

NOTES:
 FINISH - GRAY BAKED ENAMEL POWDER COAT PAINT OVER CLEANED GALVANNEALED STEEL.
 MAXIMUM SYSTEM VOLTAGE: 120/240VAC, 1Ø3W, 50-60HZ, 208Y/120VAC, 1Ø3W, 50-60HZ (FROM A 3Ø4W SYSTEM)
 UL LISTED - FILE E-6294, VOL M
 SUITABLE ONLY FOR USE AS SERVICE EQUIPMENT.
 SUITABLE FOR UNDERGROUND/OVERHEAD SERVICE.

COMBINATION SERVICE ENTRANCE DEVICES
 RINGLESS TYPE ALL-IN-ONE QO 24-42 CIRCUIT
 RAINPROOF NEMA TYPE 3R ENCLOSURE
 SURFACE MOUNT ONLY



DWG# PWFDS-SYRS-0045
 NO.