

A

B

C

D

A

B

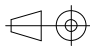

C

D

**FUNCTIONAL PLATE PS2AC25-A0
TRANSFORMER ABL6
GENERATION AND PROTECTION
POWER: 250VA**

This technical information contained in this document is the exclusive property of Schneider Electric Industries S.A.S and cannot be used or disclosed to third parties of any kind without its written consent. Only those drawings and diagrams permitted after order booking are binding for execution. All devices shown in this diagrams are in open position, drawn out with operating mechanism disassembled and all power sources off.

Les informations techniques contenues dans ce document sont la propriété exclusive de Schneider Electric Industries S.A.S et ne peuvent être utilisées ou divulguées à des tiers quels qu'ils soient sans son accord écrit. Seuls nos engagements pour l'exécution des plans et schémas remis après enregistrement de la commande. Les appareils représentés sur ce schéma sont en position ouverte - démontés - toutes sources coupées.

FUNCTIONAL PLATE PS2AC25 TRANSFORMER ABL6 GENERATION AND PROTECTION POWER: 250VA				CELLEAN OFFER					
Echelle Scale 1/1									
Unite / Department		Code diffusion Distribution code		Projet - No commande Project - Order No.		Indice Rev 00		Folio Sheet 001	
00 22/02/2017 Edition originale / First issue		AKKA O.MEURANT A.PERRIN		PHA7186403					
Ind	Date	Modification /	Nom / Name	Visa	Nom / Name	Visa	Nom / Name	Visa	Archiv.
Rev	Date	Modification /	Dessine / Drawn		Verifie / Checked		Approuve / Approved		Micro-filmed

This technical information is the exclusive property of Schneider Electric Industries S.A.S. and cannot be used or disclosed to third parties of any kind without its written consent. Only those diagrams and devices shown in this document are intended for execution. All devices shown in this diagram are in their original position. Drawn out with separating mechanism discharged and all power sources off.

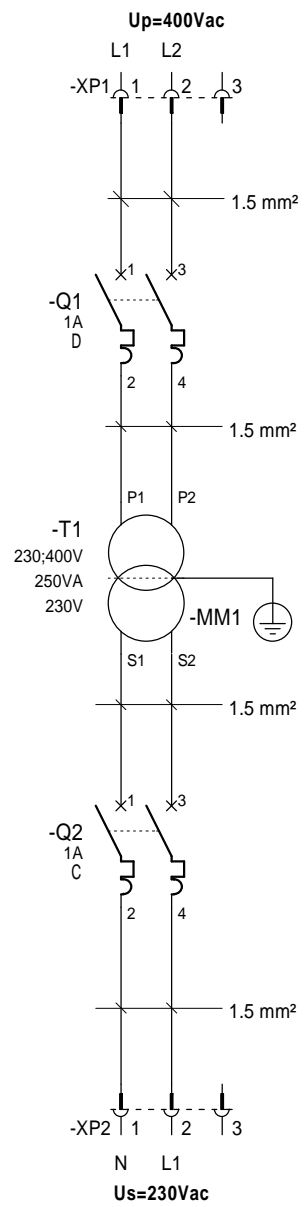
Les informations techniques contenues dans ce document sont la propriété exclusive de Schneider Electric Industries S.A.S. et ne peuvent être utilisées ou divulguées à des tiers sans le consentement écrit de Schneider Electric Industries S.A.S. Seuls les schémas et appareils représentés dans ce document sont destinés à être exécutés. Tous les appareils représentés dans ce schéma sont en position d'origine - déchargés - toutes sources coupées.

1	2	3	4	5	6	7	8	9	10
Folio Sheet	Designation Designation	Indice de modification			Folio Sheet	Designation Designation	Indice de modification		
		Revision					Revision		
001	FRONT PAGE	00							
002	SUMMARY	00							
003	FUNCTIONAL PLATE	00							
004	LAYOUT	00							
005	WIRE LIST	00							
006	PART LIST	00							

Archivage Microfilm	SUMMARY	CELLEAN OFFER	Schneider Electric	PHA7186403
			Project - No commande	Indice Rev 00
			Project - Order No.	Folio Sheet 002

This technical information contained in this document is the exclusive property of Schneider Electric Industries S.A.S. and cannot be used or disclosed to third parties of any kind without its written consent. Only those drawings and diagrams permitted after order booking are binding for execution. All devices shown in this diagrams are in open position, drawn out with operating mechanism discharged and all power sources off.

Les informations techniques contenues dans ce document sont la propriété exclusive de Schneider Electric Industries S.A.S. et ne peuvent être utilisées ou divulguées à des tiers ou à des tiers sans son accord écrit. Seuls nos engagements sur ce schéma sont en position ouvert - déarmés - débranchés - toutes sources coupées.



OTHER TRANSFORMER CHOICE

REF TRANSFORMER	Up	Us	REF Q1	REF Q2
ABL6TS25J	400Vac	12Vac	A9F75201	A9F77220
ABL6TS25B	400Vac	24Vac	A9F75201	A9F77210
ABL6TS25G	400Vac	115Vac	A9F75201	A9F74202

YOU MUST USE CABLE ON 4 MM² WITH THIS TRANSFORMER

FUNCTIONAL PLATE
PS2AC25
TRANSFORMER ABL6
GENERATION AND PROTECTION
POWER: 250VA

CELLEAN OFFER



PHA7186403

Project - No commande	Index Rev	Folio Sheet
Project - Order No.	00	003

1 2 3 4 5 6 7 8 9 10

A

B

C

D

A

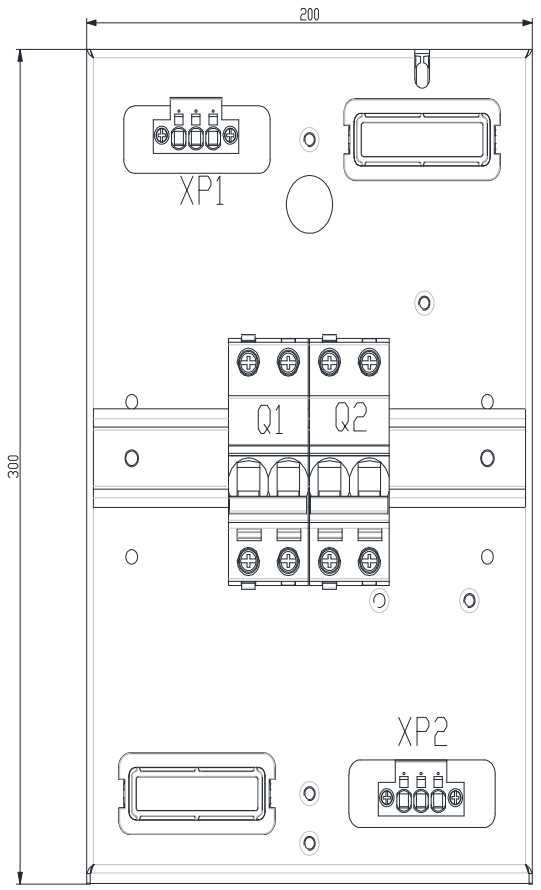
B

C

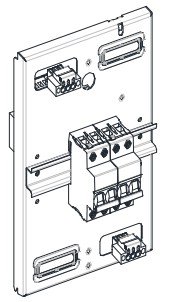
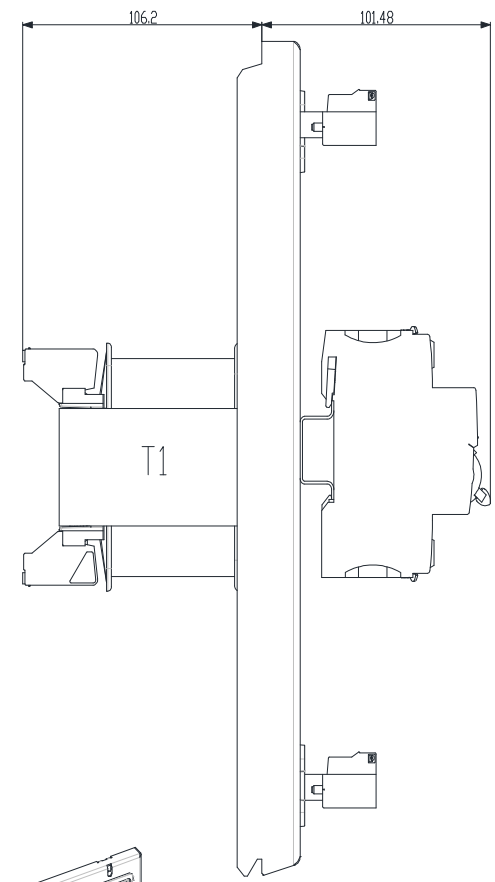
D

This technical information contained in this document is the exclusive property of Schneider Electric Industries S.A.S. and cannot be used or disclosed to third parties of any kind without its written consent. Only those drawings and diagrams permitted after order booking are binding for execution. All devices shown in this diagrams are in open position. Drawn out with operating mechanism discharged and all power sources off.

Les informations techniques contenues dans ce document (y compris les appareils, les câbles, les accessoires, les schémas, les plans et schémas remis après enregistrement de la commande. Les appareils représentés sur ce schéma sont en position ouverte - disjuncteurs - débrayés - toutes sources coupées.



APPROXIMATE WEIGHT : 6200 g



LAYOUT
PS2AC25
TRANSFORMER ABL6
GENERATION AND PROTECTION
POWER: 250VA

CELLEAN OFFER



PHA7186403

Projet - No commande
Project - Order No.

Indice Rev
00

Folio Sheet
004

	1		2		3		4		5		6		7		8		9		10		
	Type of circuit	Electrical Features		Wire Destination		Sheet N°	Designation	Color	Section	Wire Type	Câble end										
		U (V)	I (A)	From	To						From	To									
A	POWER CIRCUIT PRIMARY	400VAC	1A	XP1.1	Q1.1	003	UNIPOLAR INSULATED ELECTRIC CABLE	BLACK	1.5 mm²	H07V-K	CABLE END INSULATED LONG SIZE	CABLE END INSULATED									
				XP1.2	Q1.3	003	UNIPOLAR INSULATED ELECTRIC CABLE	BLACK	1.5 mm²	H07V-K	CABLE END INSULATED LONG SIZE	CABLE END INSULATED									
				Q1.2	T1.P1	003	UNIPOLAR INSULATED ELECTRIC CABLE	BLACK	1.5 mm²	H07V-K	CABLE END INSULATED	CABLE END INSULATED									
				Q1.4	T1.P2	003	UNIPOLAR INSULATED ELECTRIC CABLE	BLACK	1.5 mm²	H07V-K	CABLE END INSULATED	CABLE END INSULATED									
B	POWER CIRCUIT SECONDARY	230VAC	1A	T1.S1	Q2.1	003	UNIPOLAR INSULATED ELECTRIC CABLE	BLACK	1.5 mm²	H07V-K	CABLE END INSULATED	CABLE END INSULATED									
				T1.S2	Q2.3	003	UNIPOLAR INSULATED ELECTRIC CABLE	BLACK	1.5 mm²	H07V-K	CABLE END INSULATED	CABLE END INSULATED									
				XP2.1	Q2.2	003	UNIPOLAR INSULATED ELECTRIC CABLE	BLACK	1.5 mm²	H07V-K	CABLE END INSULATED LONG SIZE	CABLE END INSULATED									
				XP2.2	Q2.4	003	UNIPOLAR INSULATED ELECTRIC CABLE	BLACK	1.5 mm²	H07V-K	CABLE END INSULATED LONG SIZE	CABLE END INSULATED									
				T1.PE	MM1	003	UNIPOLAR INSULATED ELECTRIC CABLE	G/Y	1.5 mm²	H07V-K	CABLE END INSULATED	CABLE END INSULATED									

This technical information, contained in this document is the exclusive property of Schneider Electric Industries S.A.S. and cannot be used or disclosed to third parties of any kind without its written consent. Only those drawings and diagrams furnished after order booking are binding for execution. All devices shown in this diagrams are in open position, drawn out with separating mechanism disassembled and all power sources off.

Les informations techniques contenues dans ce document (such as les données techniques, les schémas, les plans, les dessins, les plans et schémas remis après enregistrement de la commande. Les appareils représentés sur ce schéma sont en position ouvert - disassembled - débranchés - toutes sources coupées.

WIRE LIST
 PS2AC25
 TRANSFORMER ABL6
 GENERATION AND PROTECTION
 POWER: 250VA

CELLEAN OFFER



PHA7186403
 Project - No commande
 Project - Order No.

Indice Rev 00
 Folio Sheet 005

A

B

C

D

A

B

C

D

This technical information contained in this document is the exclusive property of Schneider Electric Industries S.A.S. and cannot be used or disclosed to third parties of any kind without its written consent. Only those drawings and diagrams permitted after order booking are binding for execution. All devices shown in this diagrams are in open position, drawn out with operating mechanism disengaged and all power sources off.

Les informations techniques contenues dans ce document (sauf la mention contraire) sont la propriété exclusive de Schneider Electric Industries S.A.S. et ne peuvent être utilisées ou divulguées à des tiers quels qu'ils soient sans son accord écrit. Seuls ceux autorisés par l'exécution des plans et schémas remis après enregistrement de la commande. Les appareils représentés sur ce schéma sont en position ouvert - disjoints - débrayés - toutes sources coupées.

TAG	SHEET	DESCRIPTION	MANUFACTURER	MANUFACTURER REF.	QTY
Q1	003	CIRCUIT BREAKER IC60N 2P 1A, 440VAC/25kA 133VDC/6kA, CURVE D	SCHNEIDER ELECTRIC	A9F75201	1
Q2	003	CIRCUIT BREAKER IC60N 2P 1A, 440VAC/25kA 133VDC/6kA, CURVE C	SCHNEIDER ELECTRIC	A9F74201	1
T1	003	VOLTAGE TRANSFORMER - 230..400 V - 1 X 230 V - 250 VA	SCHNEIDER ELECTRIC	ABL6TS25U	1
XP1	003	MOVING CONNECTOR 3P 32A IP2X	SCHNEIDER ELECTRIC	LGYDC3P32M2S	1
XP2	003	MOVING CONNECTOR 3P 32A IP2X	SCHNEIDER ELECTRIC	LGYDC3P32M2S	1
		FUNCTION PLATE H300 x W200 4 WINDOWS VERSION A	SCHNEIDER ELECTRIC	NSYME03024A	1
		DIN RAIL, WIDTH: 35mm, HEIGHT: 15mm, LENGTH: 200mm	-----	DIN RAIL T2	1
		SHUTTER AND CABLE GLAND	SCHNEIDER ELECTRIC	NSYMEWGL	2

PART LIST
PS2AC25
TRANSFORMER ABL6
GENERATION AND PROTECTION
POWER: 250VA

CELLEAN OFFER



PHA7186403

Project - No commande
Project - Order No.

Indice Rev 00
Folio Sheet 006