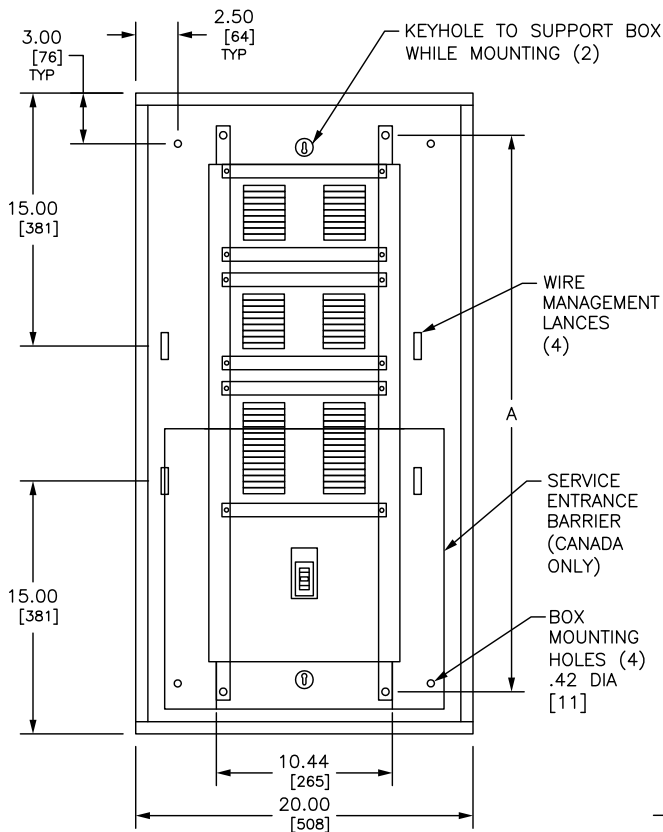
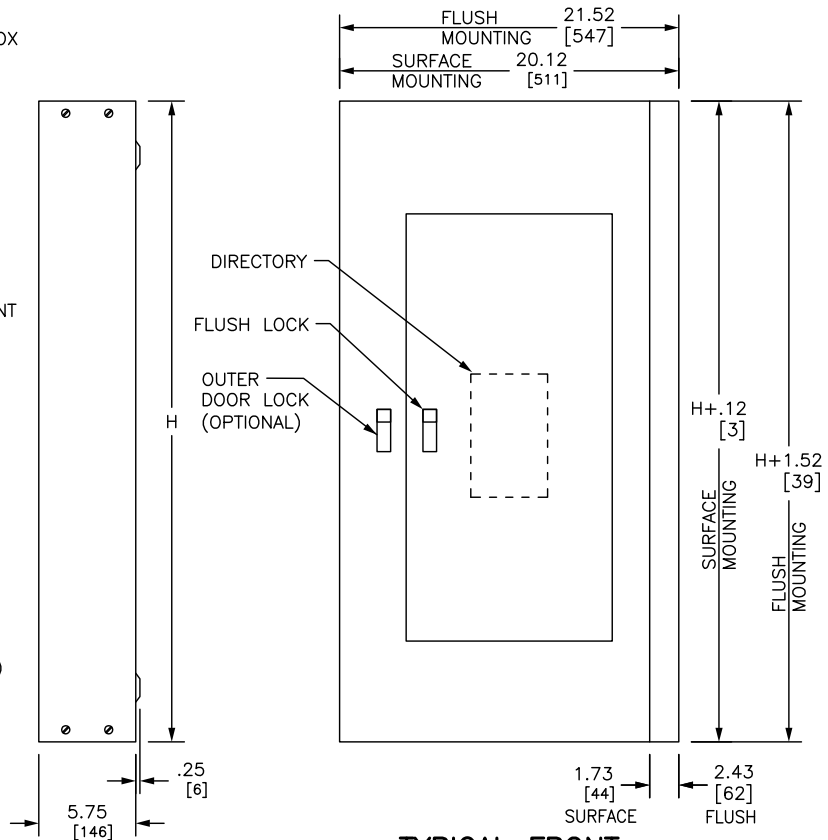


REV	DESCRIPTION	BY	DATE				
---	---	---	---	---	---	---	---

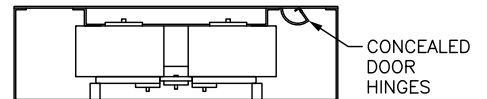


TYPICAL BOX WITH INTERIOR

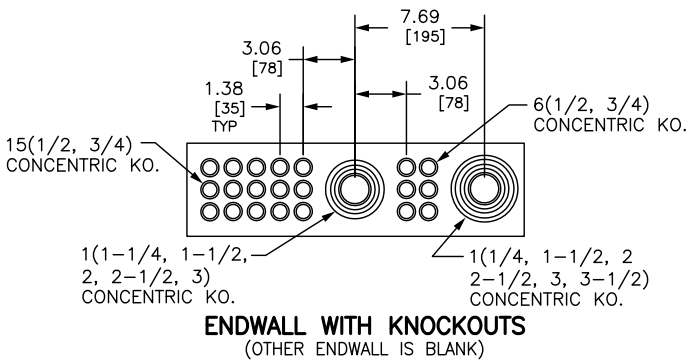


TYPICAL BOX SIDE VIEW

TYPICAL FRONT



TYPICAL MOUNTING OF EDB OR ECB-G3 BREAKERS



REFER TO DP CATALOG CLASS 1670 FOR ADDITIONAL INFORMATION
 FOR NEMA TYPE 3R APPLICATIONS USE IN CONJUNCTION WITH PBA555
 NF PANELBOARDS MEET THE APPLICABLE REQUIREMENTS OF UL AND CSA.

BOX: CODE GAUGE GALVANIZED STEEL. ONE ENDWALL IS BLANK, THE OTHER HAS KNOCKOUTS.

FRONT: MONO-FLAT CONSTRUCTION WITH CONCEALED TRIM SCREWS AND DOOR HINGES. CONCEALED HINGES ON RIGHT SIDE OF TRIM. ANSI 49 GRAY BAKED ENAMEL FINISH ELECTRODEPOSITED OVER CLEANED PHOSPHATIZED STEEL.

LOCK: FLUSH LOCK WITH BRUSHED, STAINLESS STEEL ESCUTCHEON. NSR-251 KEY.

DUAL DIMENSIONS: INCHES MILLIMETERS

MAXIMUM MAIN BREAKER AMPERE RATING	INTERIOR TYPE	MAXIMUM NUMBER OF CIRCUITS	H		A	
			IN	MM	IN	MM
250A	SPLIT BUS	30-18-18	86.00	2184	81.00	2057
	SEPARATED	30-18-18	92.00	2337	87.00	2210
	DISTRIBUTION	18-18-18	86.00	2184	81.00	2057

JOB NAME: ---	EQUIPMENT DESIGNATION: ---
JOB LOCATION: ---	EQUIPMENT TYPE: NF 250A VERT MCB THREE SECTION SPLIT BUS TYPE 1 HINGED
DRAWN BY: ---	DRAWING TYPE: ---
ENGR: ---	
DATE: MARCH 2018	
DRAWING STATUS: ---	DWG# PBA873HR

