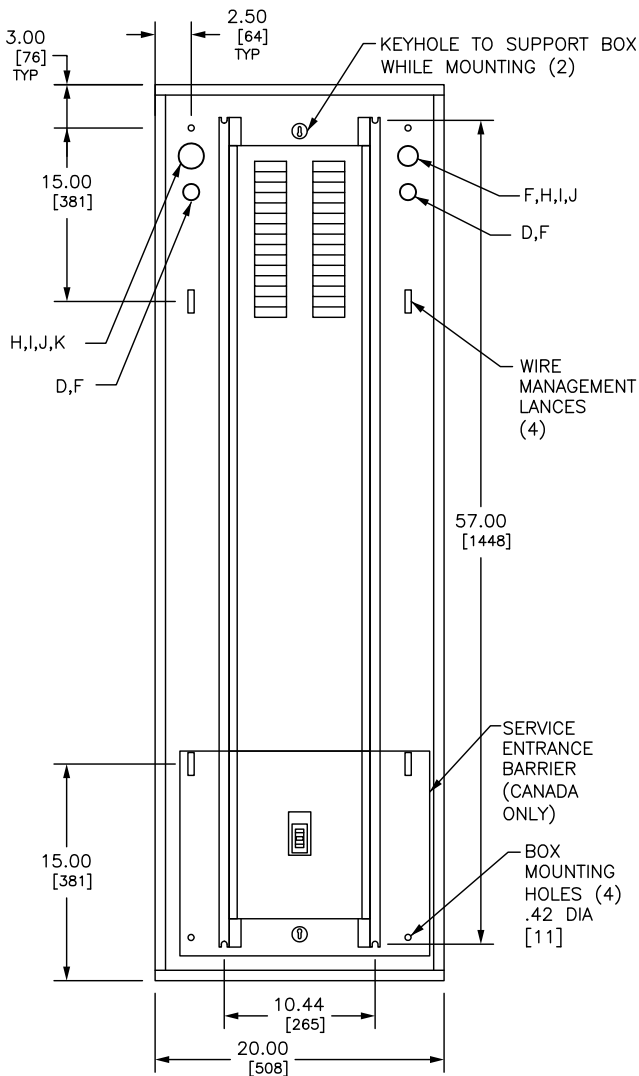
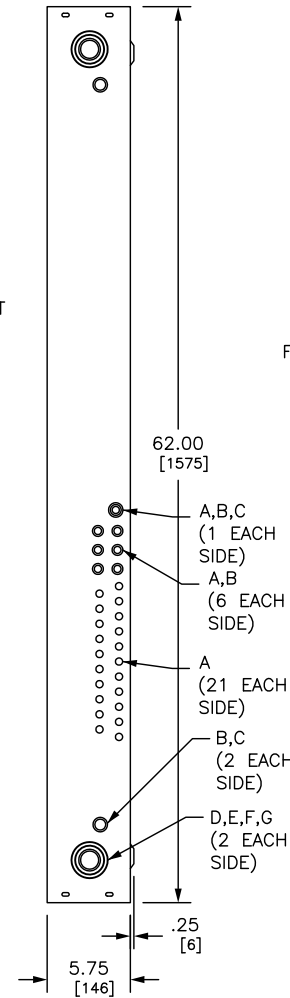


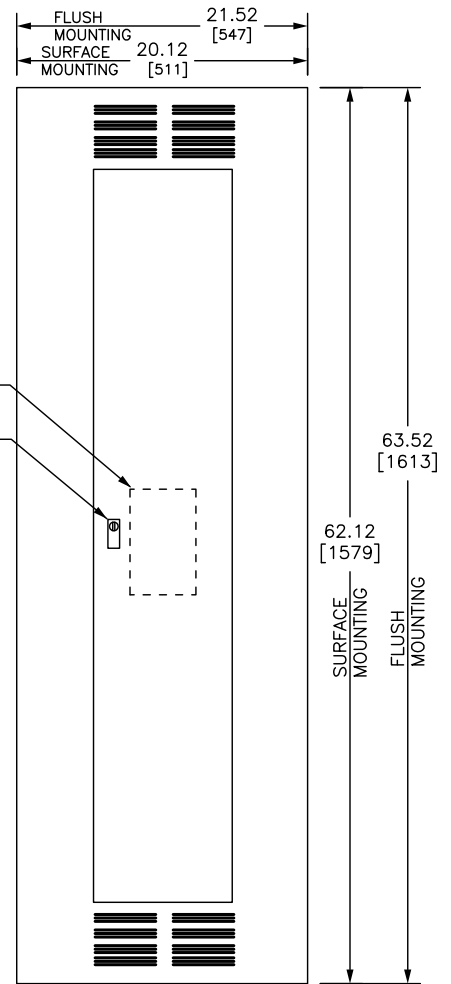
REV	DESCRIPTION	BY	DATE				
-	-	-	-	-	-	-	-



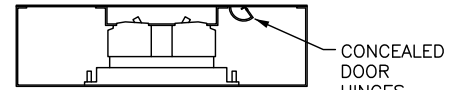
TYPICAL BOX WITH INTERIOR



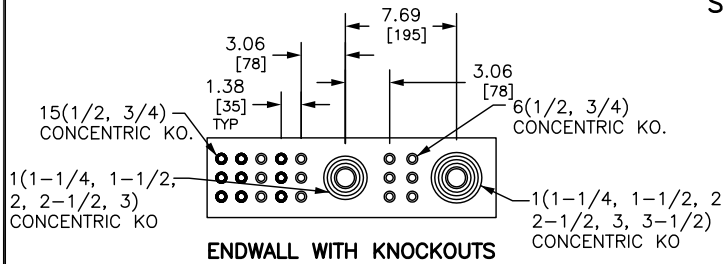
TYPICAL BOX SIDE VIEW



TYPICAL FRONT



TYPICAL MOUNTING OF QO, QOB BREAKERS



ENDWALL WITH KNOCKOUTS

INTERIOR: 42 CIRCUIT 84 NEUTRAL TERMINATION POINTS.

SUITABLE FOR TYPE 1 INDOOR APPLICATIONS

MAXIMUM LA MAIN BREAKER AMPERE RATING: 400A

BREAKER TYPE: LAP26400MT

NQ PANELBOARDS MEET THE APPLICABLE REQUIREMENTS OF UL AND CSA.

BOX: CODE GAUGE GALVANIZED STEEL. BOTH ENDWALLS HAVE KNOCKOUTS.

FRONT: GRAY BAKED ENAMEL FINISH ELECTRODEPOSITED OVER CLEANED PHOSPHATIZED STEEL.

FRONT IS VENTED AND MOUNTS TO ENCLOSURE WITH SCREWS. DOOR HINGES ARE CONCEALED.

LOCK: FLUSH LOCK WITH BRUSHED STAINLESS STEEL ESCUTCHEON. NSR-251 KEY.

DUAL DIMENSIONS: INCHES
MILLIMETERS

SYMBOL	KNOCKOUTS	
	CONDUIT SIZE	
	IN	MM
A	.50	13
B	.75	19
C	1.00	25
D	1.12	28
E	1.25	32
F	1.38	35
G	1.50	38
H	1.75	44
I	2.00	51
J	2.50	64
K	3.00	76

JOB NAME: ---	EQUIPMENT DESIGNATION: ---
JOB LOCATION: ---	EQUIPMENT TYPE: NQ MCB 400A TYPE 1 42 CKT
DRAWN BY: ---	DRAWING TYPE: ---
ENGR: ---	
DATE: MAY 2017	
DRAWING STATUS: ---	DWG# PBA720
	PG 01 OF 01 REV -