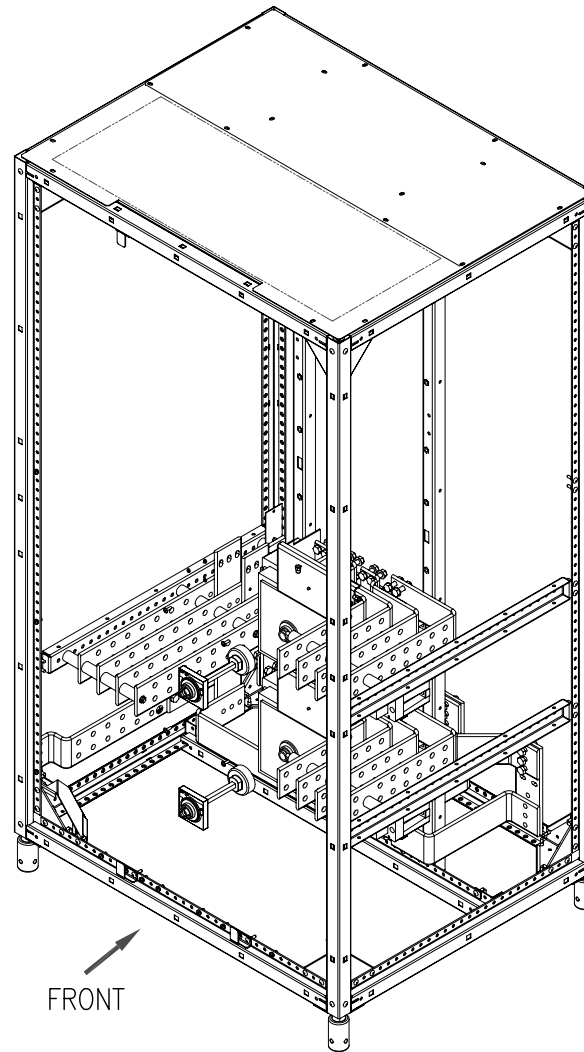


FRONT

ISOMETRIC VIEW
(EXTERNAL)



FRONT

ISOMETRIC VIEW
(INTERNAL)

- NOTES:
1. INSTALLATION SHALL COMPLY WITH ALL APPLICABLE NATIONAL, STATE AND LOCAL ELECTRICAL REGULATIONS.
 2. PLEASE REFER TO PRODUCT MANUALS FOR ADDITIONAL DETAILS PRIOR TO INSTALLATION AND SITE PREPARATION WORK.
 3. CABLE ENTRY IS FROM BOTTOM OF THE UNIT.
 4. FRONT AND REAR SERVICE ACCESS IS REQUIRED.
 5. ENCLOSURE PROTECTION: IP20

THIS DRAWING AND SPECIFICATIONS HEREIN ARE THE PROPERTY OF SCHNEIDER ELECTRIC AND SHALL NOT BE COPIED, REPRODUCED OR USED IN WHOLE OR IN PART, AS THE BASIS FOR THE MANUFACTURE OR SALE OF ITEMS WITHOUT WRITTEN PERMISSION FROM SCHNEIDER ELECTRIC. THIS DRAWING IS BASED UPON LATEST AVAILABLE INFORMATION AND IS SUBJECT TO CHANGE WITHOUT NOTICE.



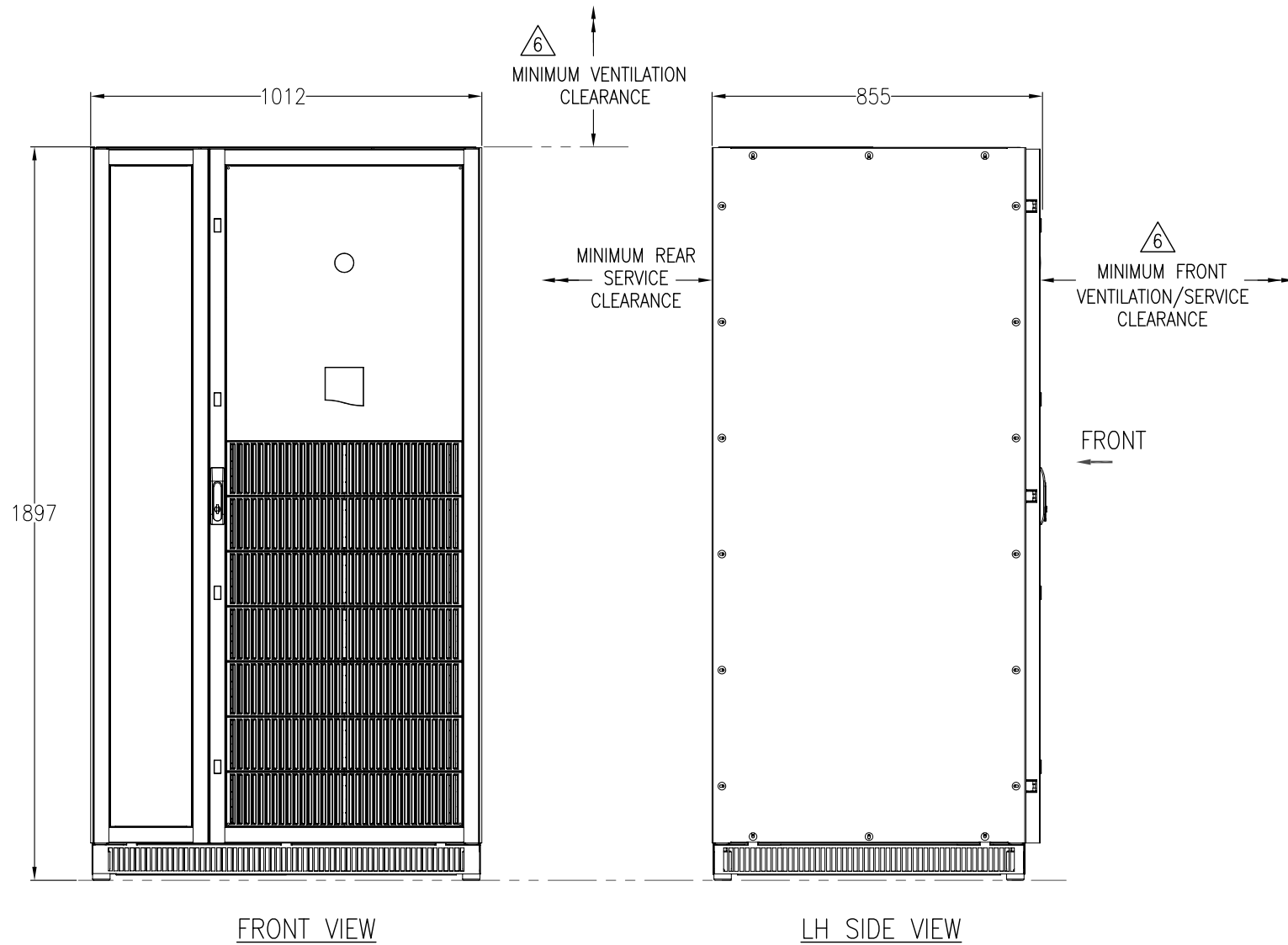
TITLE: MGE GALAXY 7000
INPUT: 400V AC 3PH
OUTPUT: 400V AC 3PH
800kVA, MECHANICAL BYPASS
ISOMETRIC VIEW

DWG NO: G7TH800S REV. 0

DRAWN: K.NAGENDRA 26-OCT-14 FIRST ANGLE
ENGINEER: LASORAK 26-OCT-14 PROJECTION

PROJECT: DRAWINGS SHEET 1 OF 4

APPROVED: DESCHAMPS 26-OCT-14



FRONT VIEW

LH SIDE VIEW

NOTES:

1. INSTALLATION SHALL COMPLY WITH ALL APPLICABLE NATIONAL, STATE AND LOCAL ELECTRICAL REGULATIONS.
2. PLEASE REFER TO PRODUCT MANUALS FOR ADDITIONAL DETAILS PRIOR TO INSTALLATION AND SITE PREPARATION WORK.
3. ALL DIMENSIONS ARE IN MILLIMETERS. UNLESS OTHERWISE SPECIFIED.
4. COLOR: PEARL DARK GRAY (RAL-9023).
5. RECOMMENDED CLEARANCE IS SUBJECT TO NATIONAL AND LOCAL CODES
- △6. 1000mm RECOMMENDED FRONT CLEARANCE.
600mm RECOMMENDED TOP CLEARANCE FOR VENTILATION.
7. OPERATING TEMPERATURE: 0°C MIN. TO 35°C MAX.
RECOMMENDED OPERATING RANGE: 20°C TO 25°C.
8. POWER CABLES SHALL BE IN SEPARATE CONDUITS FROM CONTROL AND COMMUNICATION CABLES.
9. UPS AC CABLING ARE EQUAL IN TERMS OF LOAD SHARING IN BYPASS OPERATION,
FOR DC CABLING IN TERMS OF DC VOLTAGE DROP BEING EQUAL.
- △10. THIS INFORMATION PROVIDED CONSERVATIVE CENTER OF GRAVITY CALCULATION.

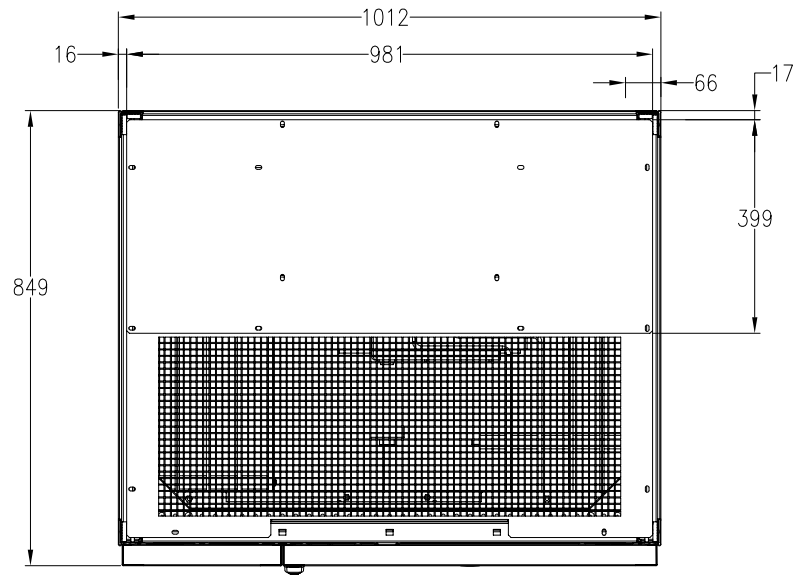
Floor Loading Data			
Rating	Dimensions x W x D	H	Floor Loading kg / m2
800kVA Bypass	1900x1012x849		340 393

THIS DRAWING AND SPECIFICATIONS HEREIN ARE THE PROPERTY OF SCHNEIDER ELECTRIC AND SHALL NOT BE COPIED, REPRODUCED OR USED IN WHOLE OR IN PART, AS THE BASIS FOR THE MANUFACTURE OR SALE OF ITEMS WITHOUT WRITTEN PERMISSION FROM SCHNEIDER ELECTRIC. THIS DRAWING IS BASED UPON LATEST AVAILABLE INFORMATION AND IS SUBJECT TO CHANGE WITHOUT NOTICE.

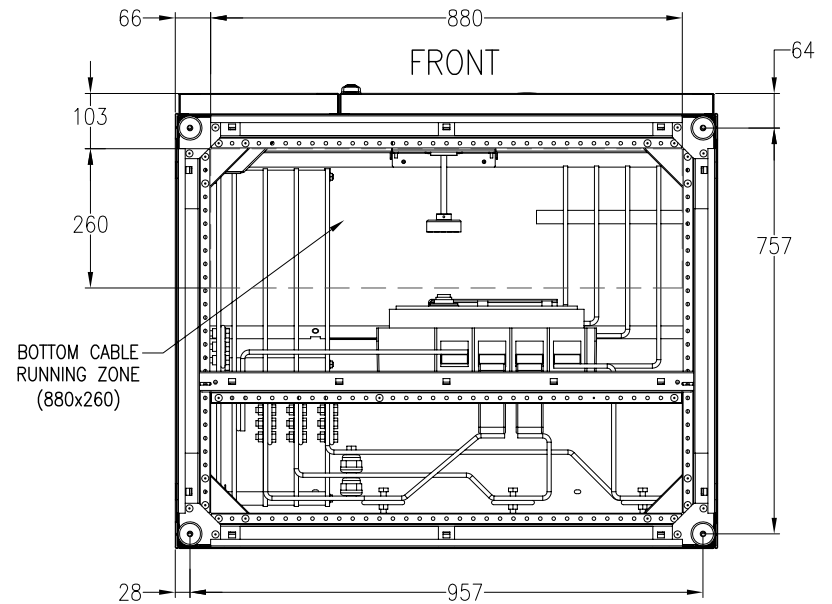


TITLE: MGE GALAXY 7000
INPUT: 400V AC 3PH
OUTPUT: 400V AC 3PH
800kVA, MECHANICAL BYPASS
GENERAL ARRANGEMENT
PROJECT: DRAWINGS SHEET 2 OF 4

DWG NO:	G7TH800S		REV.	0
DRAWN:	K.NAGENDRA	26-OCT-14	FIRST ANGLE PROJECTION	
ENGINEER:	LASORAK	26-OCT-14		
APPROVED:	DESCHAMPS	26-OCT-14		



TOP VIEW



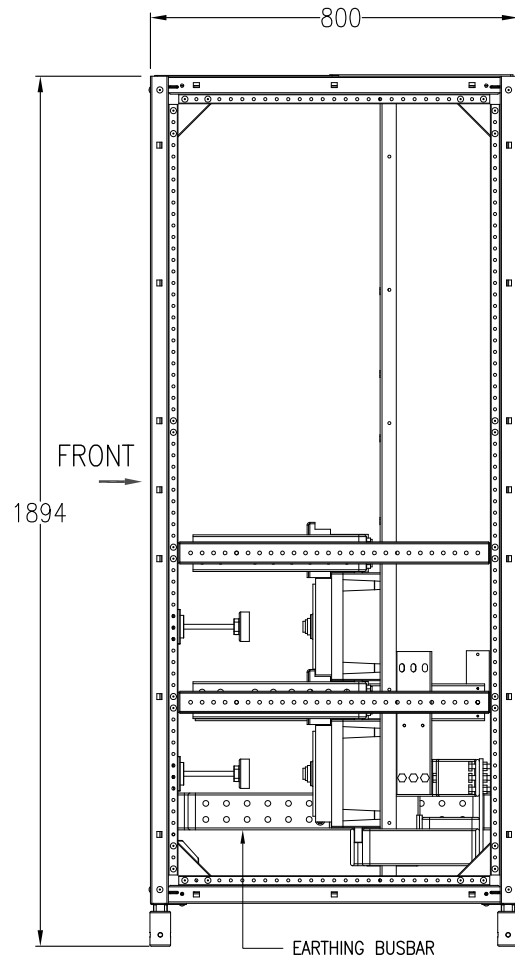
BOTTOM VIEW

- NOTES:
1. INSTALLATION SHALL COMPLY WITH ALL APPLICABLE NATIONAL, STATE AND LOCAL ELECTRICAL REGULATIONS.
 2. PLEASE REFER TO PRODUCT MANUALS FOR ADDITIONAL DETAILS PRIOR TO INSTALLATION AND SITE PREPARATION WORK.
 3. ALL DIMENSIONS ARE IN MILLIMETERS. UNLESS OTHERWISE SPECIFIED.

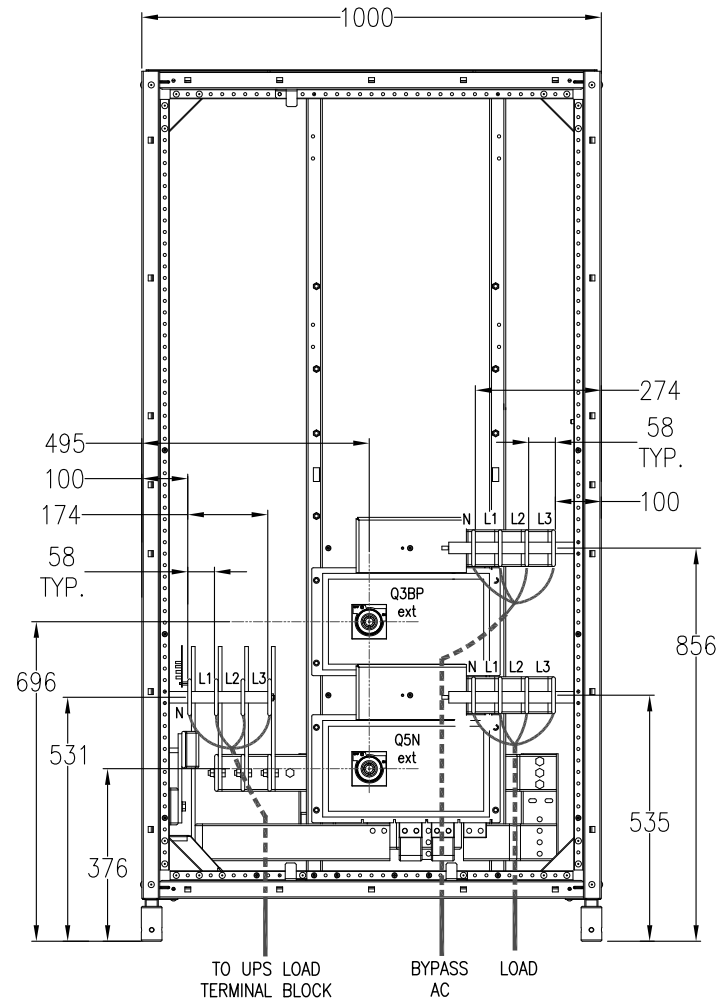
THIS DRAWING AND SPECIFICATIONS HEREIN ARE THE PROPERTY OF SCHNEIDER ELECTRIC AND SHALL NOT BE COPIED, REPRODUCED OR USED IN WHOLE OR IN PART, AS THE BASIS FOR THE MANUFACTURE OR SALE OF ITEMS WITHOUT WRITTEN PERMISSION FROM SCHNEIDER ELECTRIC. THIS DRAWING IS BASED UPON LATEST AVAILABLE INFORMATION AND IS SUBJECT TO CHANGE WITHOUT NOTICE.



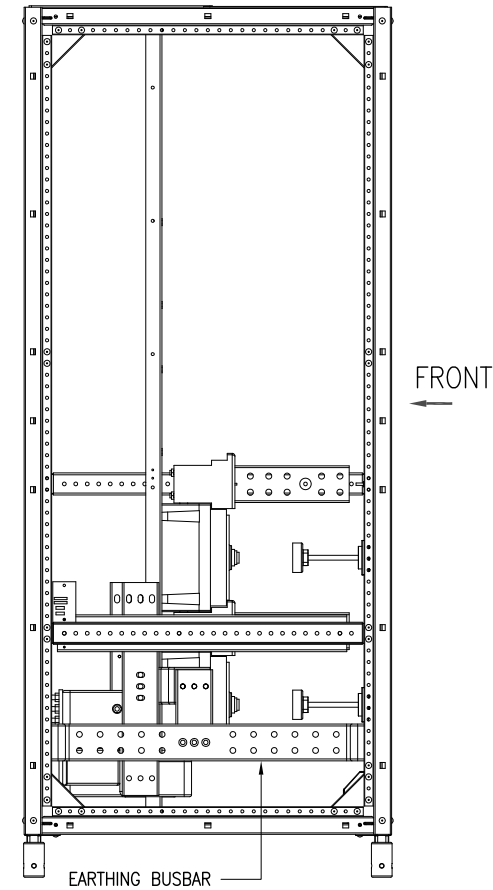
TITLE:	MGE GALAXY 7000 INPUT: 400V AC 3PH OUTPUT: 400V AC 3PH 800kVA, MECHANICAL BYPASS TOP & BOTTOM VIEW	DWG NO:	G7TH800S	REV:	0
PROJECT:	DRAWINGS	ENGINEER:	K.NAGENDRA	26-OCT-14	FIRST ANGLE PROJECTION
SHEET	3 OF 4	APPROVED:	LASORAK	26-OCT-14	
			DESCHAMPS	26-OCT-14	



RH SIDE VIEW
(INTERNAL)



FRONT VIEW
(INTERNAL)



LH SIDE VIEW
(INTERNAL)

NOTES:

1. INSTALLATION SHALL COMPLY WITH ALL APPLICABLE NATIONAL, STATE AND LOCAL ELECTRICAL REGULATIONS.
2. PLEASE REFER TO PRODUCT MANUALS FOR ADDITIONAL DETAILS PRIOR TO INSTALLATION AND SITE PREPARATION WORK.
3. ALL DIMENSIONS ARE IN MILLIMETERS. UNLESS OTHERWISE SPECIFIED.
4. ROUTE CONTROL AND COMMUNICATION CABLES SEPARATELY.
5. SOME STRUCTURAL DETAILS HAVE BEEN OMITTED FOR THE PURPOSE OF CLARITY".
6. FOR COMMUNICATION CABLES USE ONLY 1-1.5 SQMM COPPER WIRE RATED MINIMUM 250V.

THIS DRAWING AND SPECIFICATIONS HEREIN ARE THE PROPERTY OF SCHNEIDER ELECTRIC AND SHALL NOT BE COPIED, REPRODUCED OR USED IN WHOLE OR IN PART, AS THE BASIS FOR THE MANUFACTURE OR SALE OF ITEMS WITHOUT WRITTEN PERMISSION FROM SCHNEIDER ELECTRIC. THIS DRAWING IS BASED UPON LATEST AVAILABLE INFORMATION AND IS SUBJECT TO CHANGE WITHOUT NOTICE.



TITLE: MGE GALAXY 7000
INPUT: 400V AC 3PH
OUTPUT: 400V AC 3PH
800KVA, MECHANICAL BYPASS
INTERNAL VIEW

DWG NO: G7TH800S REV. 0

DRAWN: K.NAGENDRA 26-OCT-14 FIRST ANGLE PROJECTION

ENGINEER: LASORAK 26-OCT-14

PROJECT: DRAWINGS SHEET 4 OF 4

APPROVED: DESCHAMPS 26-OCT-14