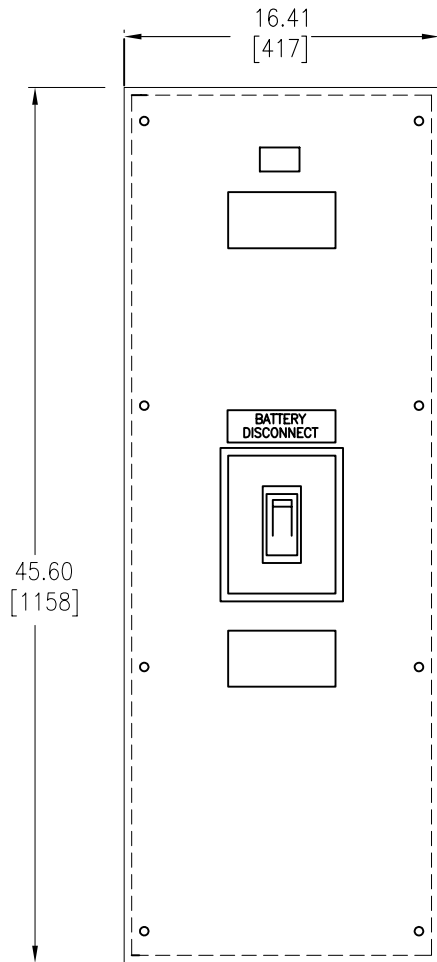
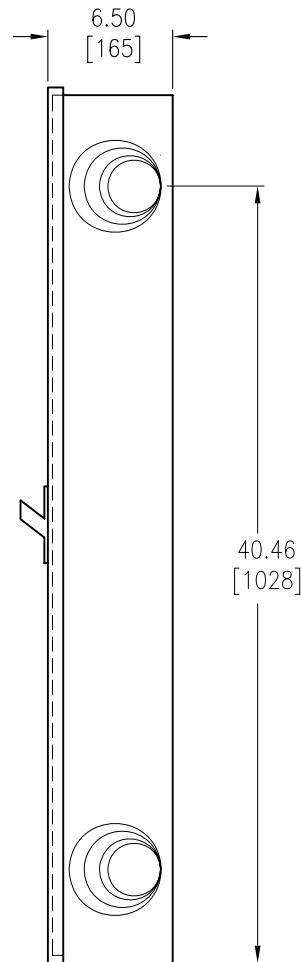


TOP VIEW



FRONT VIEW



SIDE VIEW

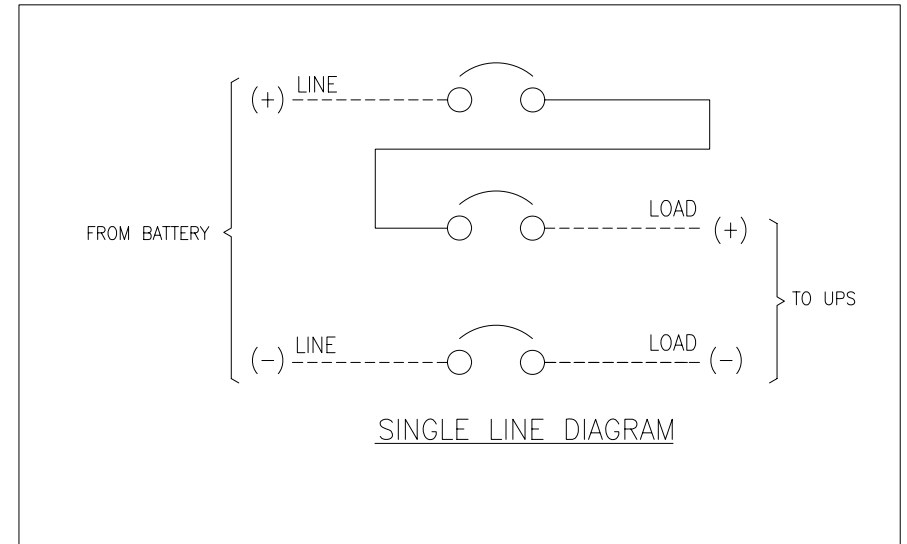
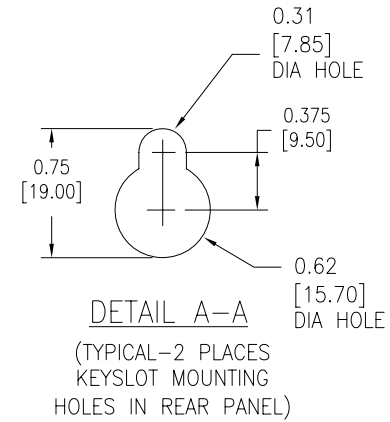
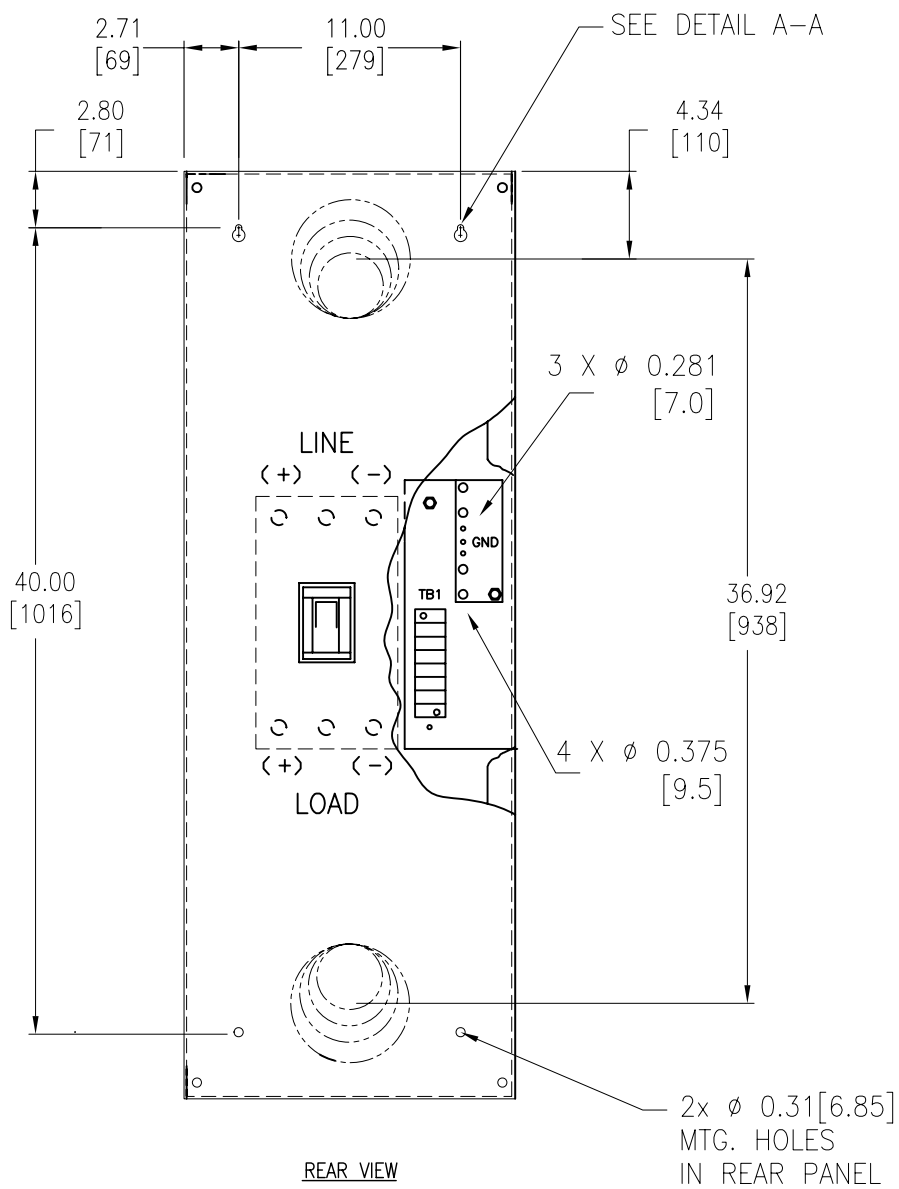
NOTES:

1. INSTALLATION SHALL COMPLY WITH ALL APPLICABLE LOCAL AND NATIONAL CODES.
2. PLEASE REFER TO PRODUCT MANUALS FOR ADDITIONAL DETAILS.
3. ALL DIMENSIONS ARE IN INCHES [MILLIMETERS].
4. UNLESS OTHERWISE SPECIFIED ALL DIMENSIONS ARE TO OUTSIDE EDGE OF THE CABINET, EXCLUDING HARDWARE, CIRCUIT BREAKER HANDLE ETC.,
5. COLOR: ASA 61 GRAY.
6. BATTERY DISCONNECT CABINET IS DESIGNED FOR CABLE ENTRY THROUGH TOP OR BOTTOM OF CABINET.
7. CIRCUIT BREAKER LUGS, LINE & LOAD WILL ACCOMMODATE ONE (1) # 1-600 MCM OR TWO (2) # 1-250MCM CU WIRES.
8. CONTROL WIRES MUST BE RUN IN INDIVIDUAL CONDUIT SEPARATE FROM POWER WIRES.
9. ALL EXTERNAL WIRING BY CUSTOMER

THIS DRAWING AND SPECIFICATIONS HEREIN ARE THE PROPERTY OF SCHNEIDER ELECTRIC AND SHALL NOT BE COPIED, REPRODUCED OR USED IN WHOLE OR IN PART, AS THE BASIS FOR THE MANUFACTURE OR SALE OF ITEMS WITHOUT WRITTEN PERMISSION FROM SCHNEIDER ELECTRIC. THIS DRAWING IS BASED UPON LATEST AVAILABLE INFORMATION AND IS SUBJECT TO CHANGE WITHOUT NOTICE.



TITLE:	GALAXY 5000 INSTALLATION DRAWING BATTERY DISCONNECT CABINET, 400A MAIN MECHANICAL		DWG NO:	90-166000-05	REV.	0
			DRAWN BY:	K.NAGENDRA	25-MAR-10	THIRD
			ENGINEER:	I. KENNEDY	28-JAN-09	ANGLE
PROJECT: SUBMITTAL DRAWINGS	SHEET 1 OF 3		APPROVED BY: B.SHERIDAN/F.DIOSA	28-JAN-09		PROJECTION



**NOTES:**

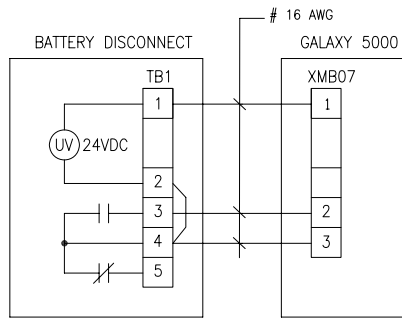
1. INSTALLATION SHALL COMPLY WITH ALL APPLICABLE LOCAL AND NATIONAL CODES.
2. PLEASE REFER TO PRODUCT MANUALS FOR ADDITIONAL DETAILS.
3. ALL DIMENSIONS ARE IN INCHES [MILLIMETERS].

THIS DRAWING AND SPECIFICATIONS HEREIN ARE THE PROPERTY OF SCHNEIDER ELECTRIC AND SHALL NOT BE COPIED, REPRODUCED OR USED IN WHOLE OR IN PART, AS THE BASIS FOR THE MANUFACTURE OR SALE OF ITEMS WITHOUT WRITTEN PERMISSION FROM SCHNEIDER ELECTRIC. THIS DRAWING IS BASED UPON LATEST AVAILABLE INFORMATION AND IS SUBJECT TO CHANGE WITHOUT NOTICE.

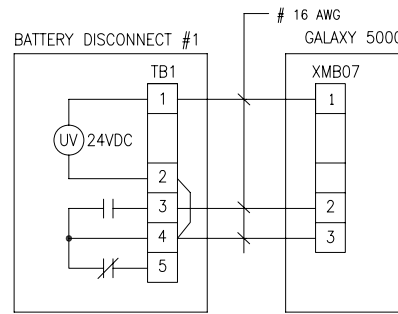


TITLE:	GALAXY 5000 INSTALLATION DRAWING BATTERY DISCONNECT CABINET, 400A REAR VIEW AND SINGLE LINE		DWG NO:	90-166000-05	REV.	0
DRAWN BY:	K.NAGENDRA	25-MAR-10	ENGINEER:	I. KENNEDY	28-JAN-09	ANGLE
PROJECT: SUBMITTAL DRAWINGS	SHEET 2 OF 3	APPROVED BY:	B.SHERIDAN/F.DIOSA	28-JAN-09		PROJECTION N.A.

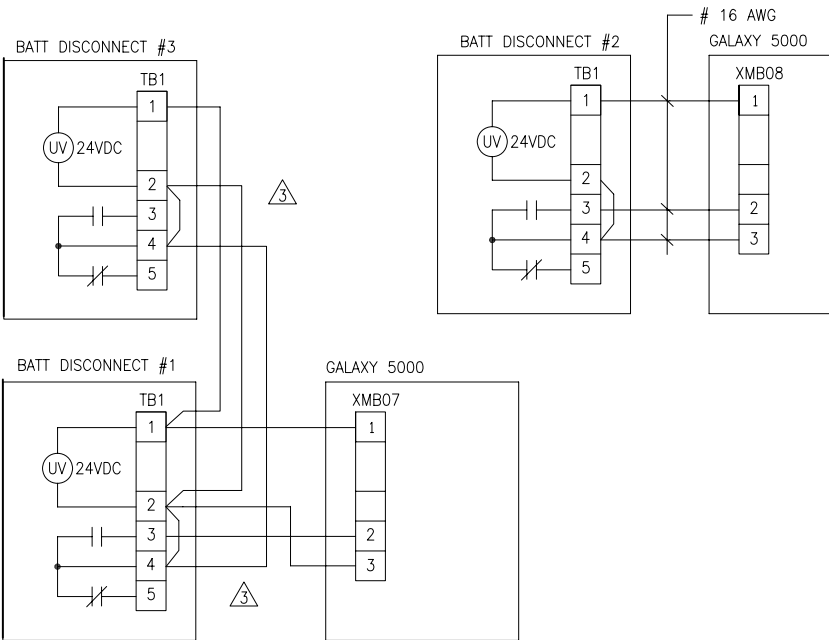
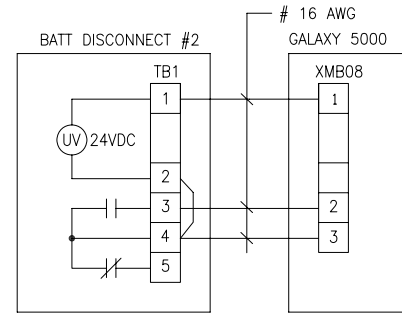
# INTERCONNECT DIAGRAM MGE GALAXY 5000



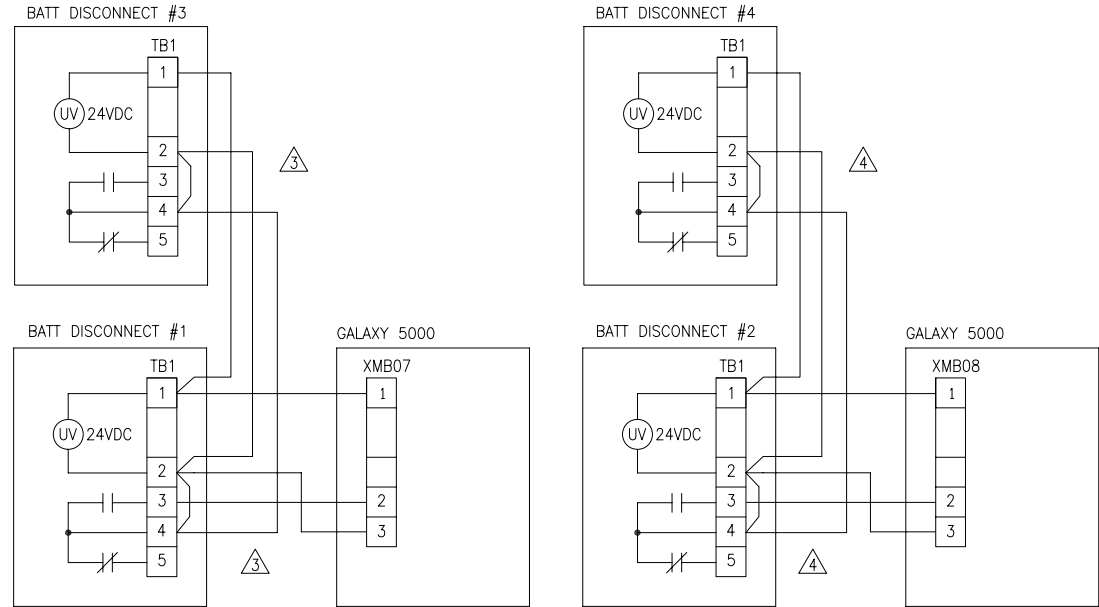
ONE BATTERY CABINET



TWO BATTERY CABINETS



THREE BATTERY CABINETS



FOUR BATTERY CABINETS

**NOTES:**

1. INSTALLATION SHALL COMPLY WITH ALL APPLICABLE LOCAL AND NATIONAL CODES.
2. PLEASE REFER TO PRODUCT MANUALS FOR ADDITIONAL DETAILS.
- △ 3. WHEN FIELD INSTALLING THREE OR FOUR BATTERY CABINETS:  
ON BATTERY CABINET #1, REMOVE JUMPER FROM PINS 2 TO 4.  
ON BATTERY CABINET #3, MOVE JUMPER TO PINS 2 AND 3.

- △ 4. WHEN FIELD INSTALLING FOUR BATTERY CABINETS:  
ON BATTERY CABINET #2, REMOVE JUMPER FROM PINS 2 TO 4.  
ON BATTERY CABINET #4, MOVE JUMPER TO PINS 2 AND 3.

THIS DRAWING AND SPECIFICATIONS HEREIN ARE THE PROPERTY OF SCHNEIDER ELECTRIC AND SHALL NOT BE COPIED, REPRODUCED OR USED IN WHOLE OR IN PART, AS THE BASIS FOR THE MANUFACTURE OR SALE OF ITEMS WITHOUT WRITTEN PERMISSION FROM SCHNEIDER ELECTRIC. THIS DRAWING IS BASED UPON LATEST AVAILABLE INFORMATION AND IS SUBJECT TO CHANGE WITHOUT NOTICE.



TITLE:  
GALAXY 5000  
INSTALLATION DRAWING  
BATTERY DISCONNECT CABINET, 400A  
INTERCONNECT DIAGRAM  
PROJECT: SUBMITTAL DRAWINGS | SHEET 3 OF 3

DWG NO:	90-166000-05	REV:	0
DRAWN BY:	K.NAGENDRA	25-MAR-10	ANGLE
ENGINEER:	I. KENNEDY	28-JAN-09	PROJECTION
APPROVED BY:	B.SHERIDAN/F.DIOSA	28-JAN-09	N.A