

MODEL DETAILS				
MODEL NUMBER	CONFIGURATION	DIMENSION "W" Inches [mm]	WEIGHT lbs [kg]	QF1 Rating Amps
72-174020-12	ADJACENT	26.24 [666]	1878 [853]	175A
72-174020-22	STANDALONE	26.48 [673]	1830 [831]	175A
72-174020-14	ADJACENT	32.34 [821]	2950 [1339]	250A
72-174020-24	STANDALONE	32.48 [825]	2900 [1317]	250A

NOTES: UNLESS OTHERWISE SPECIFIED.

- INSTALLATION SHALL COMPLY WITH ALL APPLICABLE NATIONAL AND LOCAL CODES.
- PLEASE REFER TO PRODUCT MANUALS FOR ADDITIONAL DETAILS.
- UNLESS OTHERWISE SPECIFIED ALL DIMENSIONS ARE IN INCHES [MILLIMETERS].
- ALL DIMENSIONS ARE TO OUTSIDE EDGE OF THE CABINET, EXCLUDING DOOR LOCK AND ALL HARDWARE.
- RECOMMENDED CLEARANCE IS SUBJECT TO NATIONAL AND LOCAL CODES
24.0 [610] RECOMMENDED TOP CLEARANCE.
39.0 [1000] RECOMMENDED FRONT CLEARANCE.
- COLOR: SILVER METALLIC, DARK GRAY.
- A TORX (T-30) TYPE SCREWDRIVER IS REQUIRED TO REMOVE PANELS.
- OPERATING TEMPERATURE: 32°F (0°C) MIN. TO 104°F (40°C) MAX.
RECOMMENDED OPERATING RANGE: 60°F (15°C) TO 77°F (25°C).
- ALL EXTERNAL WIRING SUPPLIED AND CONNECTED BY CUSTOMER (STAND ALONE MODELS ONLY).
- POWER CABLES SHALL BE IN SEPARATE CONDUITS FROM CONTROL AND COMMUNICATION CABLES.
- FOR ADJACENT UNIT:
CABINET SHIPPED WITHOUT SIDE PANELS AND SIDE AIR INTAKE COVERS.
USE SIDE PANEL AND AIR INTAKE COVER FROM UPS WHEN END CABINET IN SYSTEM LINE-UP.
- BATTERY VOLTAGE DROP SHALL BE KEPT TO LESS THAN 1% BASED ON BATTERY DISCONNECT RATING.
- THIS DRAWING DEPICTS 26.0 [660] WIDTH CABINET. FOR OTHER DETAILS REFER TO TABLE.

NON-SEISMIC INSTALLATION ONLY

THIS DRAWING AND SPECIFICATIONS HEREIN ARE THE PROPERTY OF SCHNEIDER ELECTRIC AND SHALL NOT BE COPIED, REPRODUCED OR USED IN WHOLE OR IN PART, AS THE BASIS FOR THE MANUFACTURE OR SALE OF ITEMS WITHOUT WRITTEN PERMISSION FROM SCHNEIDER ELECTRIC. THIS DRAWING IS BASED UPON LATEST AVAILABLE INFORMATION AND IS SUBJECT TO CHANGE WITHOUT NOTICE.

Schneider
Electric

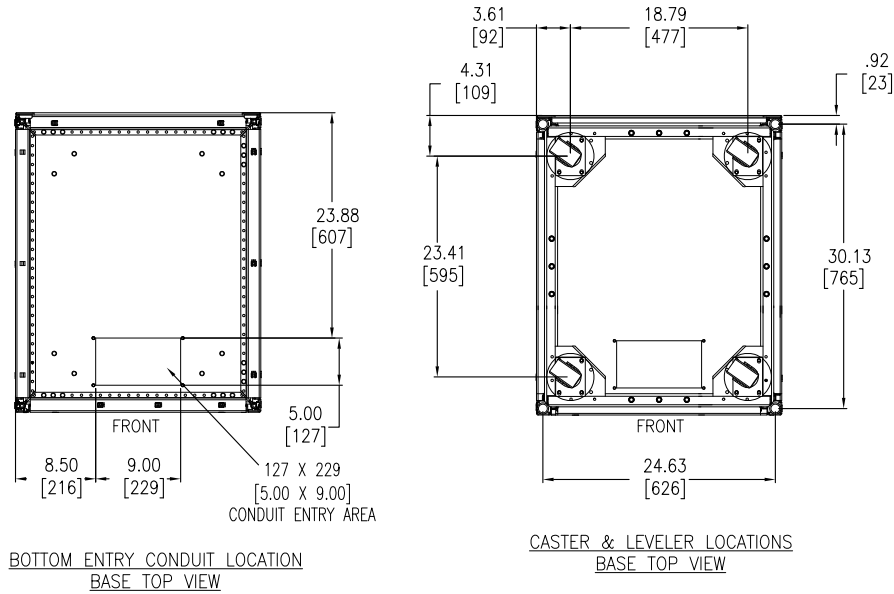
TITLE:
GALAXY 5000
INSTALLATION DRAWINGS, NON-SEISMIC
26" & 32" WIDE BATTERY CABINETS
MAIN MECHANICAL

PROJECT: SUBMITTAL DRAWINGS SHEET 1 OF 5

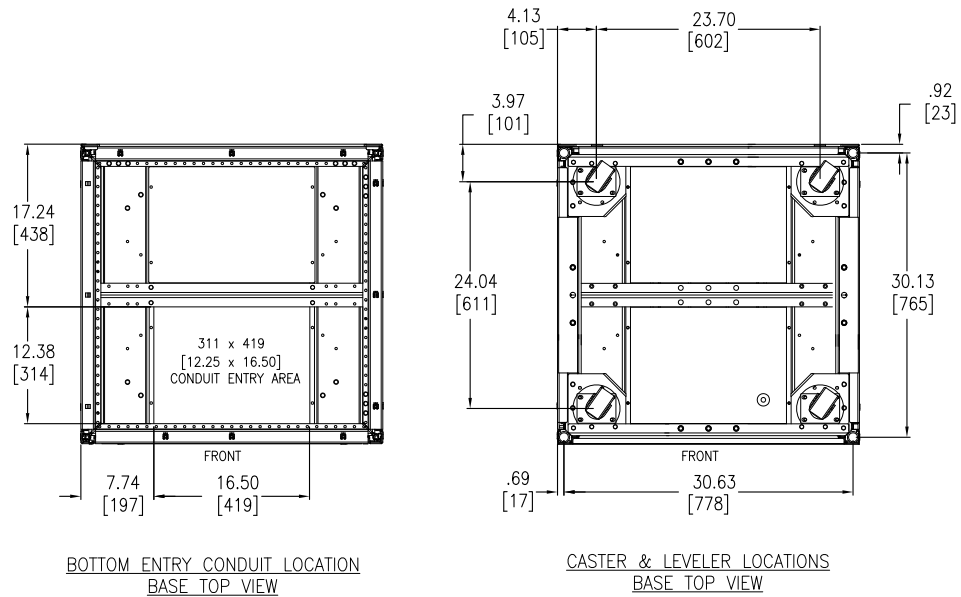
DWG NO: 90-174701-00 REV. 2

DRAWN BY: S CUNHA	23-OCT-13	THIRD
ENGINEER: S DAS/U BHAVILAI	23-OCT-13	ANGLE
APPROVED BY: J GOOSSEFF	23-OCT-13	PROJECTION

FOR 26.0 [660.0] WIDTH CABINET



FOR 32.0 [813.0] WIDTH CABINET



NOTES: UNLESS OTHERWISE SPECIFIED.

1. INSTALLATION SHALL COMPLY WITH ALL APPLICABLE NATIONAL AND LOCAL CODES.
2. PLEASE REFER TO PRODUCT MANUALS FOR ADDITIONAL DETAILS.
3. ALL DIMENSIONS ARE IN INCHES [MILLIMETERS].
4. DIMENSIONS SHOWN WITHOUT SIDE PANELS {EACH SIDE PANEL 6.0 [0.24]}.

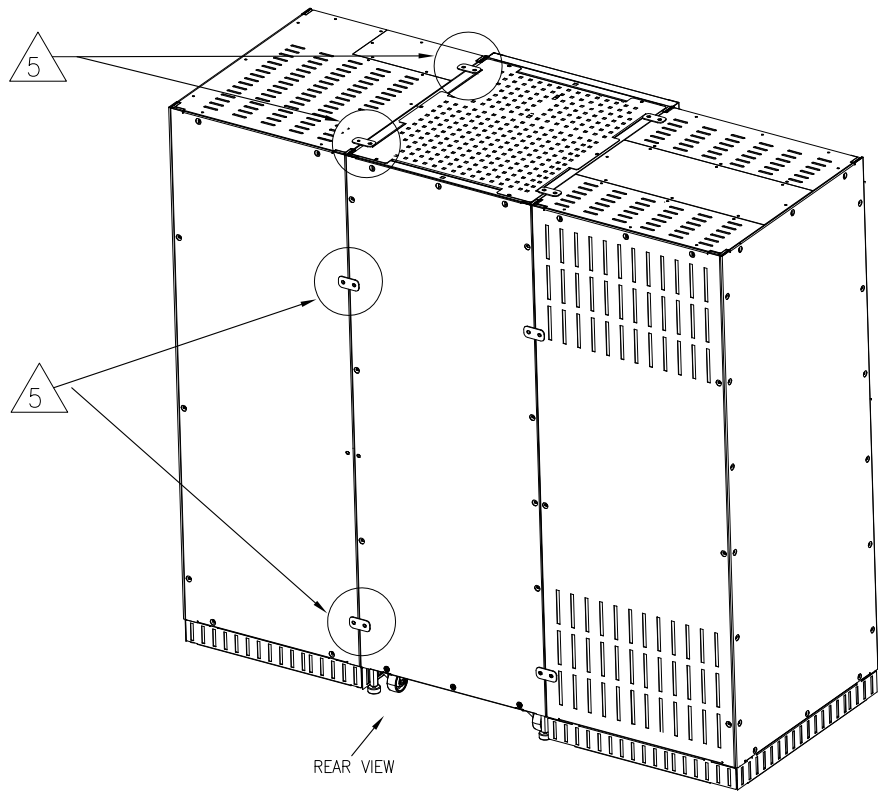
THIS DRAWING AND SPECIFICATIONS HEREIN ARE THE PROPERTY OF SCHNEIDER ELECTRIC AND SHALL NOT BE COPIED, REPRODUCED OR USED IN WHOLE OR IN PART, AS THE BASIS FOR THE MANUFACTURE OR SALE OF ITEMS WITHOUT WRITTEN PERMISSION FROM SCHNEIDER ELECTRIC. THIS DRAWING IS BASED UPON LATEST AVAILABLE INFORMATION AND IS SUBJECT TO CHANGE WITHOUT NOTICE.



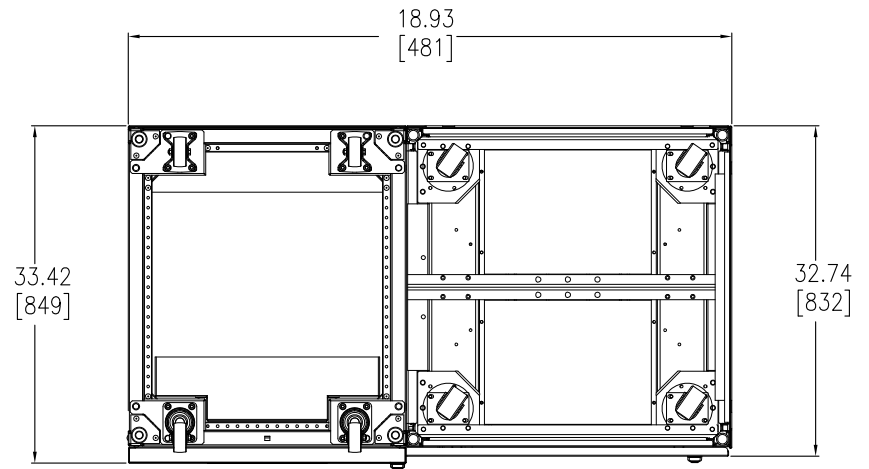
TITLE: GALAXY 5000
INSTALLATION DRAWINGS, NON-SEISMIC
26" & 32" WIDE BATTERY CABINETS
BOTTOM VIEW
PROJECT: SUBMITTAL DRAWINGS SHEET 2 OF 5

NON-SEISMIC INSTALLATION ONLY

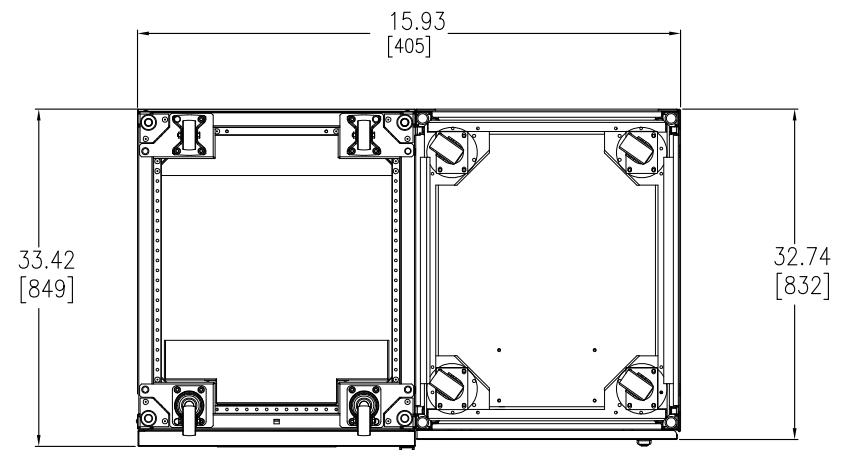
DWG NO: 90-174701-00	REV. 1
DRAWN BY: K NAGENDRA/S CUNHA	23-OCT-13
ENGINEER: I KENNEDY/S DAS	23-OCT-13
APPROVED BY: J GOOSSEFF	23-OCT-13
	THIRD ANGLE PROJECTION



INTERCONNECT BRACKETS LOCATION



BAYING CABINETS
(WITH BATTERY 32"W)



BAYING CABINETS
(WITH BATTERY 26"W)

NOTES: UNLESS OTHERWISE SPECIFIED.

1. INSTALLATION SHALL COMPLY WITH ALL APPLICABLE NATIONAL AND LOCAL CODES.
2. PLEASE REFER TO PRODUCT MANUALS FOR ADDITIONAL DETAILS.
3. ALL DIMENSIONS ARE IN INCHES [MILLIMETERS].
4. ALL DIMENSIONS ARE TO THE OUTSIDE EDGE OF CABINET, EXCLUDING DOOR LOCKS AND ALL HARDWARE.
- △5. USE BRACKET 71-174281-00 ON THE BOTTOM.

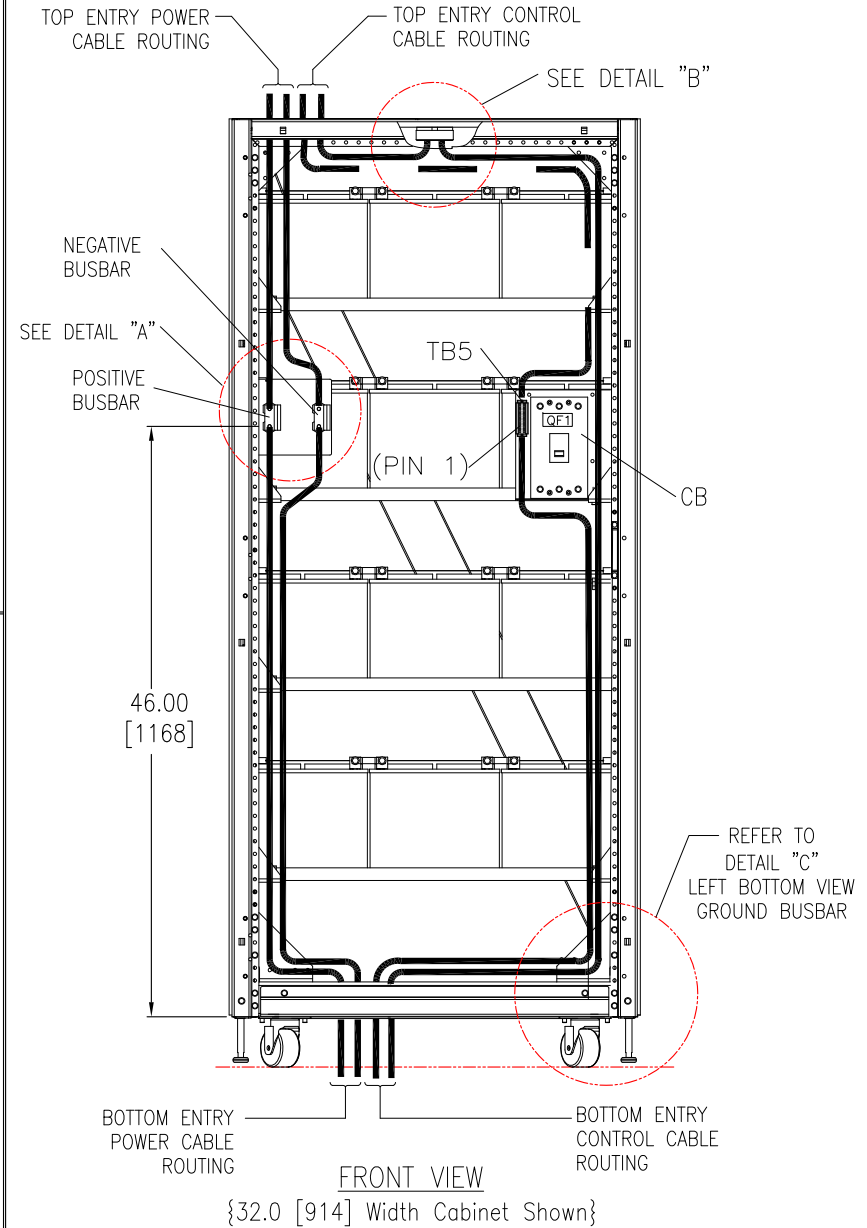
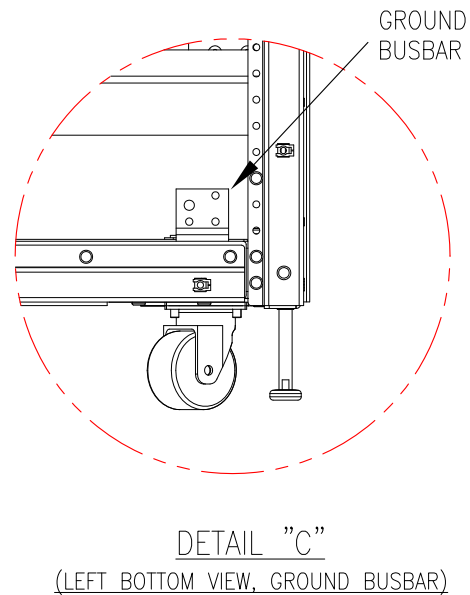
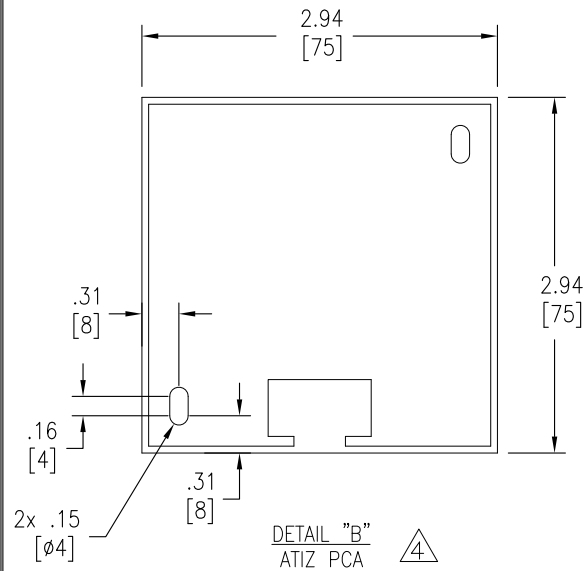
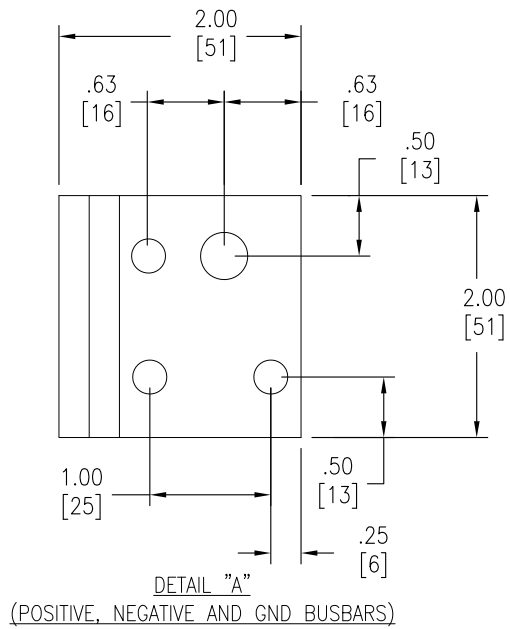
THIS DRAWING AND SPECIFICATIONS HEREIN ARE THE PROPERTY OF SCHNEIDER ELECTRIC AND SHALL NOT BE COPIED, REPRODUCED OR USED IN WHOLE OR IN PART, AS THE BASIS FOR THE MANUFACTURE OR SALE OF ITEMS WITHOUT WRITTEN PERMISSION FROM SCHNEIDER ELECTRIC. THIS DRAWING IS BASED UPON LATEST AVAILABLE INFORMATION AND IS SUBJECT TO CHANGE WITHOUT NOTICE.



TITLE:
GALAXY 5000
INSTALLATION DRAWINGS, NON-SEISMIC
26" & 32" WIDE BATTERY CABINETS
INTERCONNECT BRACKET LOCATIONS
PROJECT: SUBMITTAL DRAWINGS SHEET 3 OF 5

NON-SEISMIC INSTALLATION ONLY

DWG NO:	90-174701-00	REV.	0
DRAWN BY:	S CUNHA	23-OCT-13	THIRD
ENGINEER:	S DAS	23-OCT-13	ANGLE
APPROVED BY:	J GOOSSEFF	23-OCT-13	PROJECTION



NOTES: UNLESS OTHERWISE SPECIFIED.

1. INSTALLATION SHALL COMPLY WITH ALL APPLICABLE NATIONAL AND LOCAL CODES.
2. PLEASE REFER TO PRODUCT MANUALS FOR ADDITIONAL DETAILS.
3. ALL DIMENSIONS ARE IN INCHES [MILLIMETERS].
- △ 4. MOUNT ATIZ PCA IN FIRST BATTERY CABINET.
5. FOLLOW POWER AND CONTROL CABLES ROUTING AS SHOWN. FOR MULTIPLE ADJACENT CABINETS, CABLES INTERCONNECT THROUGH MIDDLE OF CABINET.
6. CB UV COIL CURRENT: 69 mA
CONN. XMB07/8 CURRENT SUPPLY: 200mA EACH.

THIS DRAWING AND SPECIFICATIONS HEREIN ARE THE PROPERTY OF SCHNEIDER ELECTRIC AND SHALL NOT BE COPIED, REPRODUCED OR USED IN WHOLE OR IN PART, AS THE BASIS FOR THE MANUFACTURE OR SALE OF ITEMS WITHOUT WRITTEN PERMISSION FROM SCHNEIDER ELECTRIC. THIS DRAWING IS BASED UPON LATEST AVAILABLE INFORMATION AND IS SUBJECT TO CHANGE WITHOUT NOTICE.

Schneider Electric

TITLE:
GALAXY 5000
INSTALLATION DRAWINGS, NON-SEISMIC
26" & 32" WIDE BATTERY CABINETS
INTERNAL VIEW
PROJECT: SUBMITTAL DRAWINGS SHEET 4 OF 5

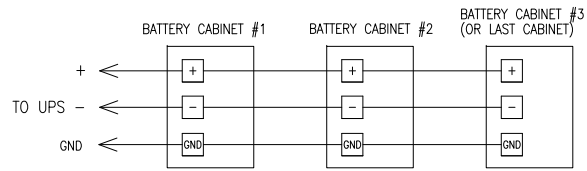
NON-SEISMIC INSTALLATION ONLY

DWG NO:	90-174701-00	REV.	1
DRAWN BY:	K NAGENDRA/S CUNHA	23-OCT-13	THIRD
ENGINEER:	I KENNEDY/S DAS	23-OCT-13	ANGLE
APPROVED BY:	J GOOSSEFF	23-OCT-13	PROJECTION

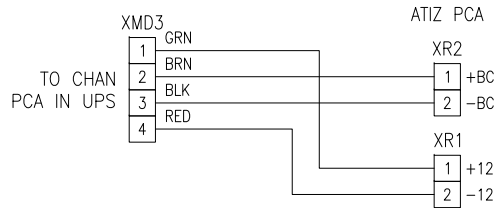
CONTROL CABLES INTERCONNECTIONS

POWER CABLES INTERCONNECTIONS

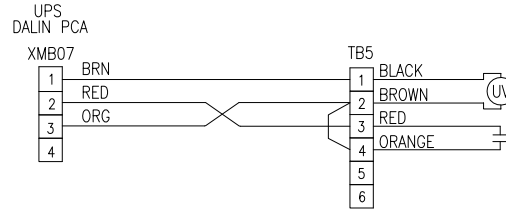
FOR MULTIPLE CABINETS



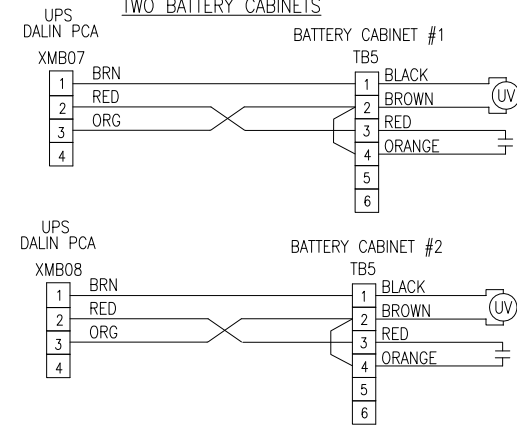
ATIZ CONNECTIONS



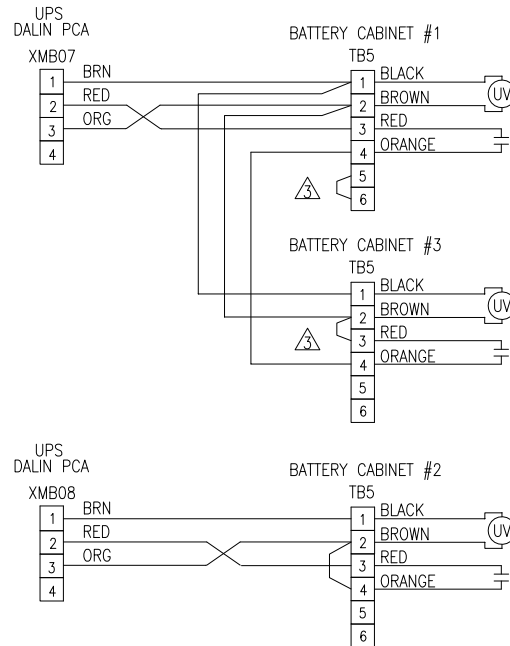
ONE BATTERY CABINET



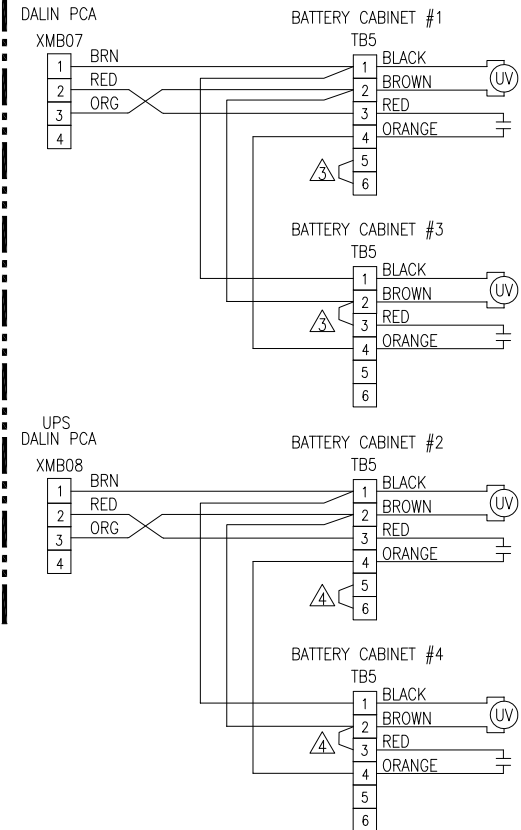
TWO BATTERY CABINETS



THREE BATTERY CABINETS



FOUR BATTERY CABINETS



NOTES: UNLESS OTHERWISE SPECIFIED.

1. INSTALLATION SHALL COMPLY WITH ALL APPLICABLE NATIONAL AND LOCAL CODES.
2. PLEASE REFER TO PRODUCT MANUALS FOR ADDITIONAL DETAILS.
- △ 3. WHEN FIELD INSTALLING THREE OR FOUR BATTERY CABINETS:
 - ON BATTERY CABINET #1, MOVE JUMPER TO PINS 5 AND 6.
 - ON BATTERY CABINET #3, MOVE JUMPER TO PINS 2 AND 3.
- △ 4. WHEN FIELD INSTALLING FOUR BATTERY CABINETS:
 - ON BATTERY CABINET #2, MOVE JUMPER TO PINS 5 AND 6.
 - ON BATTERY CABINET #4, MOVE JUMPER TO PINS 2 AND 3.

THIS DRAWING AND SPECIFICATIONS HEREIN ARE THE PROPERTY OF SCHNEIDER ELECTRIC AND SHALL NOT BE COPIED, REPRODUCED OR USED IN WHOLE OR IN PART, AS THE BASIS FOR THE MANUFACTURE OR SALE OF ITEMS WITHOUT WRITTEN PERMISSION FROM SCHNEIDER ELECTRIC. THIS DRAWING IS BASED UPON LATEST AVAILABLE INFORMATION AND IS SUBJECT TO CHANGE WITHOUT NOTICE.



TITLE: GALAXY 5000
INSTALLATION DRAWINGS, NON-SEISMIC
26" & 32" WIDE BATTERY CABINETS
CONNECTION DETAILS
PROJECT: SUBMITTAL DRAWINGS SHEET 5 OF 5

NON-SEISMIC INSTALLATION ONLY

DWG NO:	90-174701-00	REV.	2
DRAWN BY:	S CUNHA	23-OCT-13	PROJ.
ENGINEER:	S DAS/H LUDD	23-OCT-13	ANGLE
APPROVED BY:	J GOOSSEFF	23-OCT-13	N/A