

**NOTES: UNLESS OTHERWISE SPECIFIED.**

1. INSTALLATION SHALL COMPLY WITH ALL APPLICABLE NATIONAL, STATE AND LOCAL CODES.
2. PLEASE REFER TO PRODUCT MANUALS FOR ADDITIONAL DETAILS.
3. ALL DIMENSIONS ARE IN INCHES [MILLIMETERS].
4. RECOMMENDED CLEARANCE IS SUBJECT TO NATIONAL AND LOCAL CODES  
 39.4 [1000] RECOMMENDED FRONT CLEARANCE.  
 3.9 [100] RECOMMENDED REAR CLEARANCE.  
 20.6 [523] RECOMMENDED TOP CLEARANCE FOR VENTILATION.
5. CABLE ENTRY FOR INPUT AND LOAD IS FROM TOP OR BOTTOM.  
 CABLE ENTRY FOR UPS OUTPUT IS FROM REAR CONDUIT BOX.
6. NET WEIGHT OF THE UNIT 420 lbs [191 kg].
7. COLOR—METALLIC GREY

THIS DRAWING AND SPECIFICATIONS HEREIN ARE THE PROPERTY OF SCHNEIDER ELECTRIC AND SHALL NOT BE COPIED, REPRODUCED OR USED IN WHOLE OR IN PART, AS THE BASIS FOR THE MANUFACTURE OR SALE OF ITEMS WITHOUT WRITTEN PERMISSION FROM SCHNEIDER ELECTRIC. THIS DRAWING IS BASED UPON LATEST AVAILABLE INFORMATION AND IS SUBJECT TO CHANGE WITHOUT NOTICE.



TITLE: MGE GALAXY 3500  
 PARALLEL MAINTENANCE BYPASS  
 UP TO 3 UNITS, 20-30kVA, 208V  
 FLOORMOUNT  
 MAIN MECHANICAL

PROJECT: SUBMITTAL DRAWINGS | SHEET 1 OF 3

DWG NO: G35TSBPAR20K30F

DRAWN BY: K.NAGENDRA | 18-OCT-10

ENGINEER: M.MAISSY | 18-OCT-10

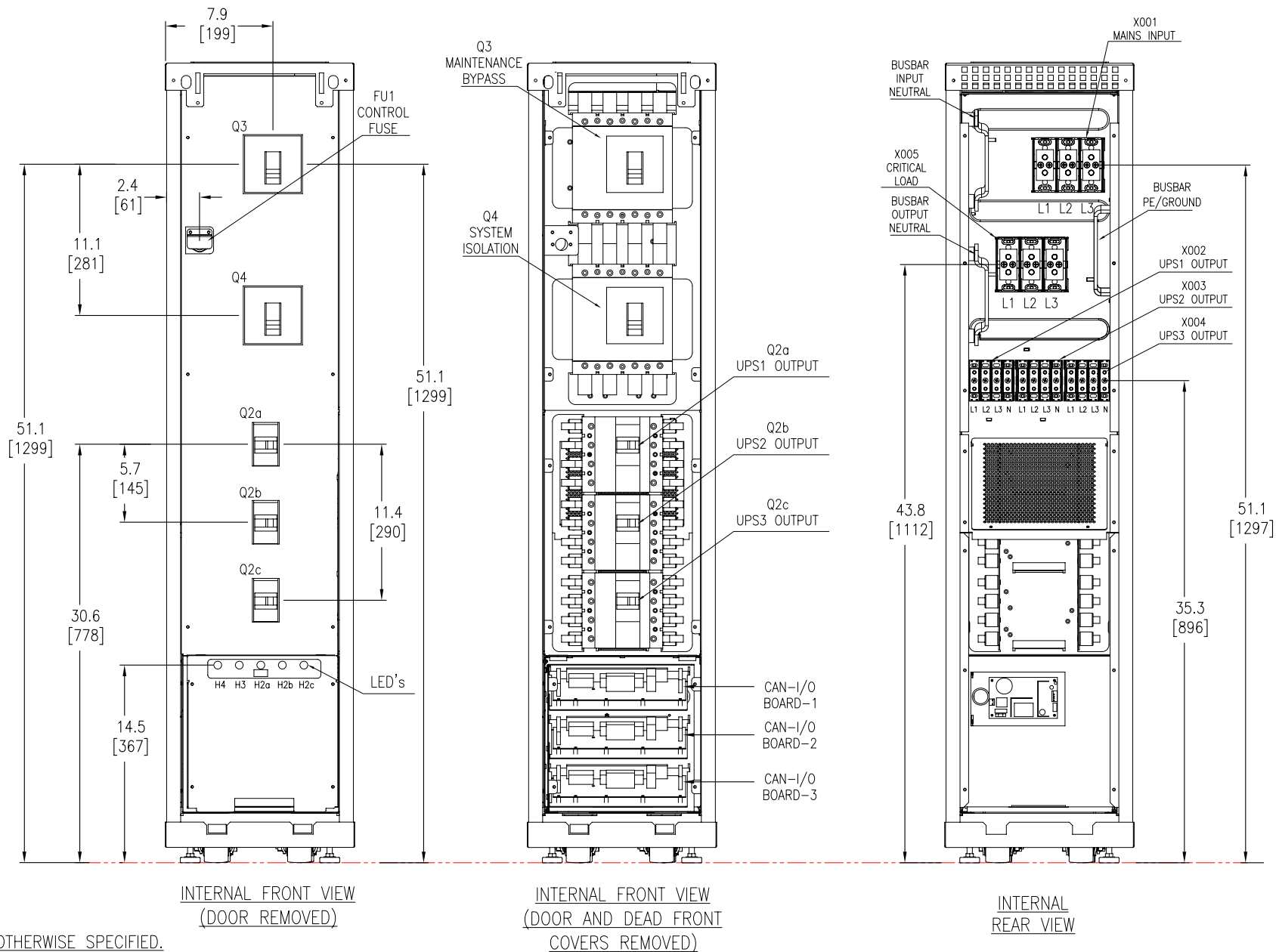
APPROVED BY: B.SHERIDAN | 18-OCT-10

REV. 1

THIRD ANGLE

PROJECTION





NOTES: UNLESS OTHERWISE SPECIFIED.

1. INSTALLATION SHALL COMPLY WITH ALL APPLICABLE NATIONAL, STATE AND LOCAL CODES.
2. PLEASE REFER TO PRODUCT MANUALS FOR ADDITIONAL DETAILS.
3. ALL DIMENSIONS ARE IN INCHES [MILLIMETERS].
4. ALL WIRING MUST BE 3 PHASE, 4 WIRE+ GROUND PROVIDED BY WYE-SOURCE.
5. Q3 AND Q4 = 4P, 400A, 480.  
Q2a, Q2b & Q2c = 4P, 125A, 480V.
6. USE COPPER CONDUCTORS RATED 75° C MINIMUM.
7. TORQUE VALUES:

TERMINAL BLOCKS (M6) 6.89 Nm (61 lbs-in)  
 TERMINAL BLOCKS (M10) 25.7 Nm (227 lbs-in)  
 BUSBARS (M5 OR M6) 11.3 Nm (100 lbs-in)

THIS DRAWING AND SPECIFICATIONS HEREIN ARE THE PROPERTY OF SCHNEIDER ELECTRIC AND SHALL NOT BE COPIED, REPRODUCED OR USED IN WHOLE OR IN PART, AS THE BASIS FOR THE MANUFACTURE OR SALE OF ITEMS WITHOUT WRITTEN PERMISSION FROM SCHNEIDER ELECTRIC. THIS DRAWING IS BASED UPON LATEST AVAILABLE INFORMATION AND IS SUBJECT TO CHANGE WITHOUT NOTICE.



TITLE: MGE GALAXY 3500  
 PARALLEL MAINTENANCE BYPASS  
 UP TO 3 UNITS, 20-30kVA, 208V  
 FLOORMOUNT  
 INTERNAL VIEW

PROJECT: SUBMITTAL DRAWINGS SHEET 3 OF 3

DWG NO: G35TSBPAR20K30F

DRAWN BY: K.NAGENDRA 18-OCT-10  
 ENGINEER: M.MAISSY 18-OCT-10

APPROVED BY: B.SHERIDAN 18-OCT-10

REV. 1  
 THIRD ANGLE PROJECTION