

- NOTES:
1. INSTALLATION SHALL COMPLY WITH ALL APPLICABLE NATIONAL, STATE AND LOCAL CODES.
 2. PLEASE REFER TO PRODUCT DOCUMENTATION FOR FURTHER DETAILS
 3. UNLESS OTHERWISE SPECIFIED, ALL DIMENSIONS ARE IN MILLIMETERS [INCHES].
 4. CABLE ENTRY IS FROM TOP OR BOTTOM OF UNIT.
 5. FRONT SERVICE ACCESS IS REQUIRED.
 6. NET WEIGHT OF UNIT 148.6 kg [327.0 LBS].
 7. SIDE CAR SHALL BE BAYED WITH BATTERY UNIT. USE BAYING KIT DURING INSTALLATION.

THIS DRAWING AND SPECIFICATIONS HEREIN ARE THE PROPERTY OF SCHNEIDER ELECTRIC AND SHALL NOT BE COPIED, REPRODUCED OR USED IN WHOLE OR IN PART, AS THE BASIS FOR THE MANUFACTURE OR SALE OF ITEMS WITHOUT WRITTEN PERMISSION FROM SCHNEIDER ELECTRIC. THIS DRAWING IS BASED UPON LATEST AVAILABLE INFORMATION AND IS SUBJECT TO CHANGE WITHOUT NOTICE.



TITLE: SYMMETRA PX BATTERY ENCLOSURE SIDE CAR TOP/BOTTOM CABLE ENTRY 400V/480V, 3PH, 500kW MAIN MECHANICAL

PROJECT: SUBMITTAL DRAWINGS SHEET 1 OF 5

DWG NO: SYBSC500K500-MM1

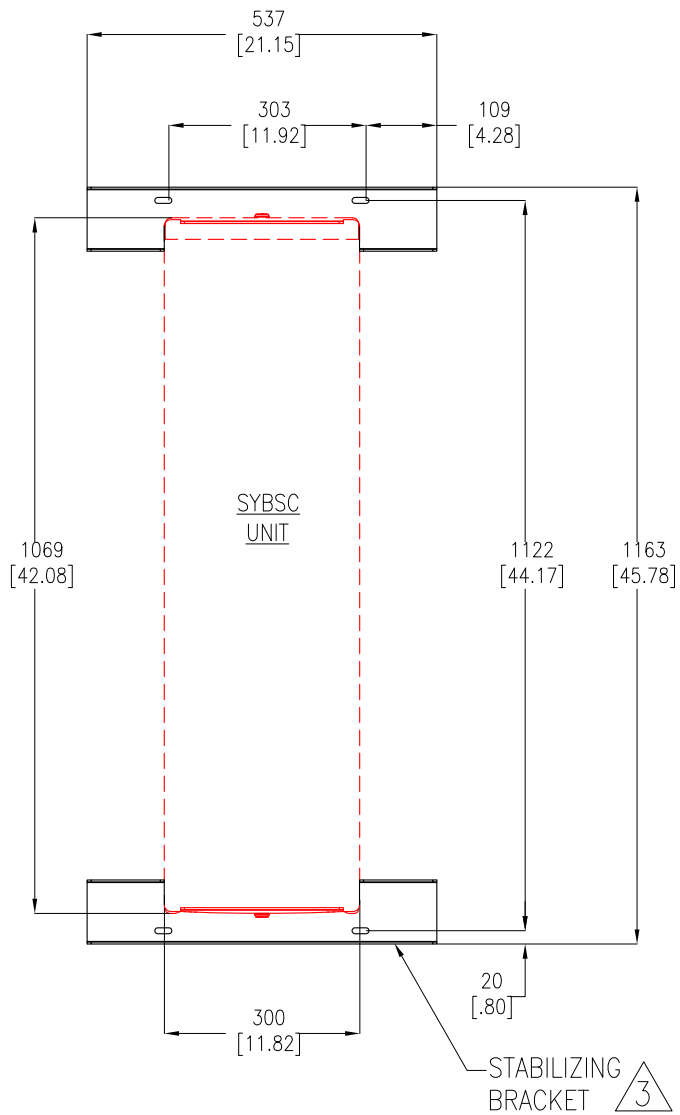
DRAWN: K NAGENDRA 12-OCT-09

ENGINEER: T MULLER 12-OCT-09

APPROVE: B SHERIDAN/F DOSA/C LARSEN/S WAGH 12-OCT-09

REV. 2

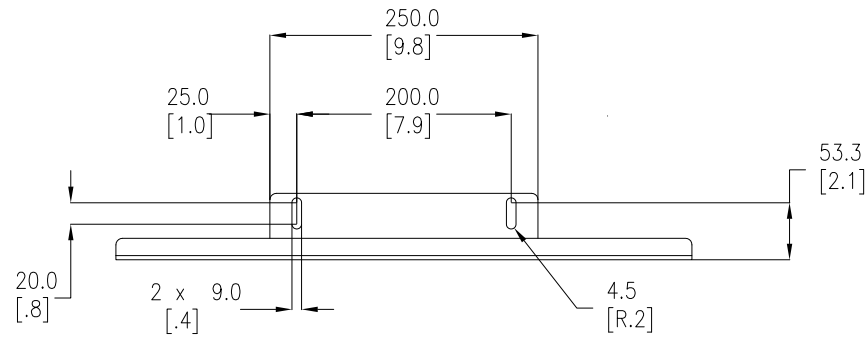
FIRST ANGLE PROJ



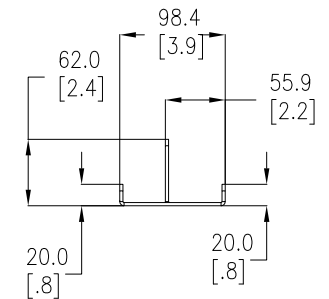
FOOT PRINT
(Enlarged)

STABILIZING BRACKET

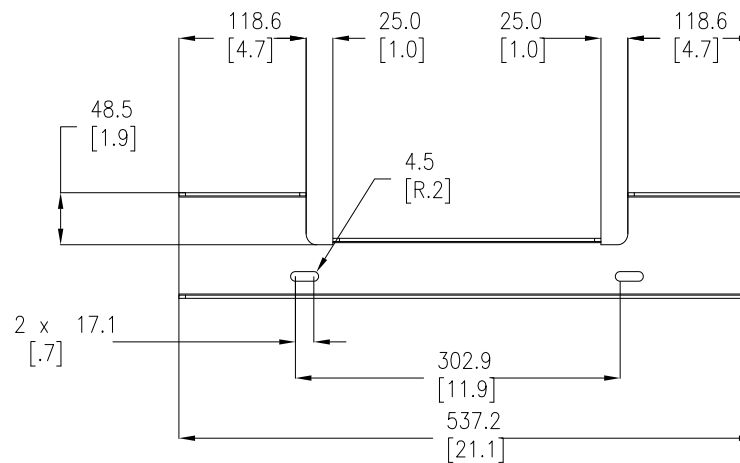
(QTY-2)



FRONT VIEW



LEFT SIDE VIEW



TOP VIEW

NOTES:

1. INSTALLATION SHALL COMPLY WITH ALL APPLICABLE NATIONAL, STATE AND LOCAL CODES.
2. PLEASE REFER TO PRODUCT DOCUMENTATION FOR FURTHER DETAILS
- △3. PROVIDED WITH SKU. 30" REAR CLEARANCE IS REQUIRED FOR INSTALLATION.
4. UNLESS OTHERWISE SPECIFIED, ALL DIMENSIONS ARE IN MILLIMETERS [INCHES].

THIS DRAWING AND SPECIFICATIONS HEREIN ARE THE PROPERTY OF SCHNEIDER ELECTRIC AND SHALL NOT BE COPIED, REPRODUCED OR USED IN WHOLE OR IN PART, AS THE BASIS FOR THE MANUFACTURE OR SALE OF ITEMS WITHOUT WRITTEN PERMISSION FROM SCHNEIDER ELECTRIC. THIS DRAWING IS BASED UPON LATEST AVAILABLE INFORMATION AND IS SUBJECT TO CHANGE WITHOUT NOTICE.

Schneider Electric

TITLE: SYMMETRA PX
BATTERY ENCLOSURE SIDE CAR
TOP/BOTTOM CABLE ENTRY
400V/480V, 3PH, 500kW
STABILIZING BRACKET

PROJECT: SUBMITTAL DRAWINGS SHEET 2 OF 5

DWG NO: SYBSC500K500-MM2

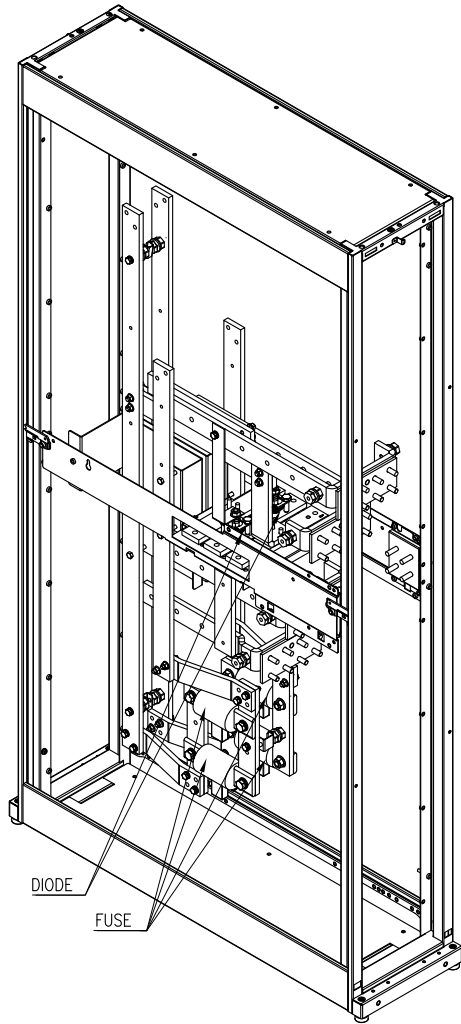
DRAWN: V BUSH 30-JUN-10

ENGINEER: T MULLER 30-JUN-10

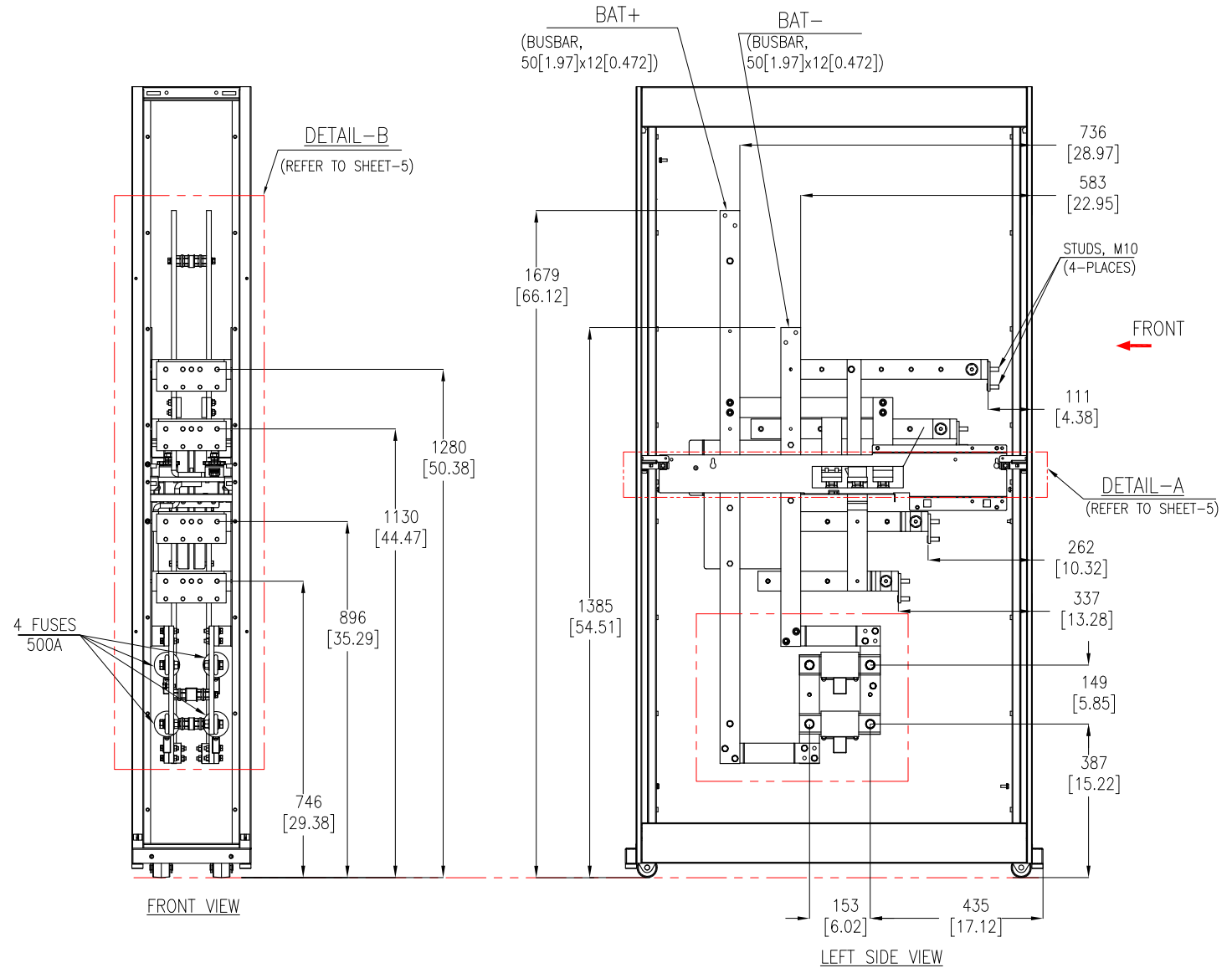
APPROVED: SHERIDAN/F DOSA/C LARSEN/S WAGH 30-JUN-10

REV. 2

FIRST ANGLE PROJ



INTERNAL-ISOMETRIC VIEW



TOP CABLE ENTRY OPTION

- NOTES:
1. INSTALLATION SHALL COMPLY WITH ALL APPLICABLE NATIONAL, STATE AND LOCAL CODES.
 2. PLEASE REFER TO PRODUCT DOCUMENTATION FOR FURTHER DETAILS
 3. UNLESS OTHERWISE SPECIFIED. ALL DIMENSIONS ARE IN MILLIMETERS [INCHES].

THIS DRAWING AND SPECIFICATIONS HEREIN ARE THE PROPERTY OF SCHNEIDER ELECTRIC AND SHALL NOT BE COPIED, REPRODUCED OR USED IN WHOLE OR IN PART, AS THE BASIS FOR THE MANUFACTURE OR SALE OF ITEMS WITHOUT WRITTEN PERMISSION FROM SCHNEIDER ELECTRIC. THIS DRAWING IS BASED UPON LATEST AVAILABLE INFORMATION AND IS SUBJECT TO CHANGE WITHOUT NOTICE.



TITLE: SYMMETRA PX
BATTERY ENCLOSURE SIDE CAR
TOP/BOTTOM CABLE ENTRY
400V/480V, 3PH, 500kW
INTERNAL VIEW-1

PROJECT: SUBMITTAL DRAWINGS SHEET 3 OF 5

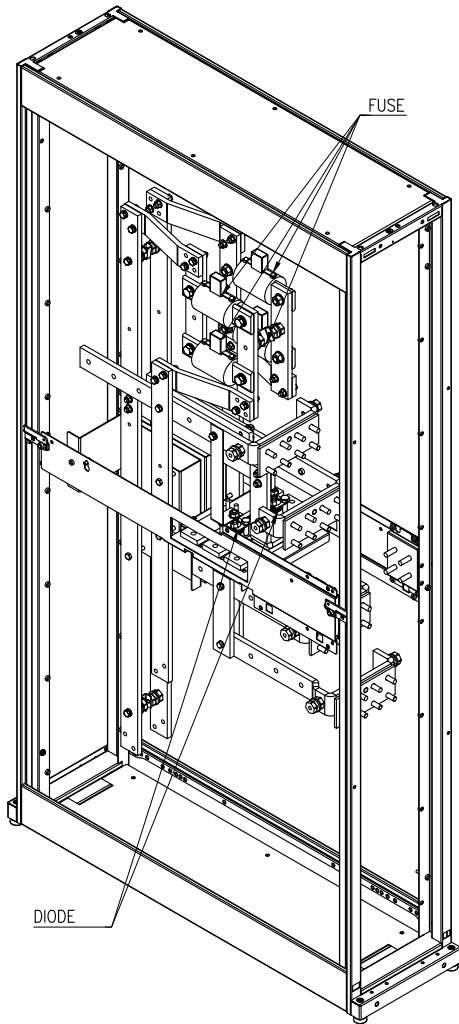
DWG NO: SYBSC500K500-ME1 REV. 2

DRAWN: K NAGENDRA 12-OCT-09

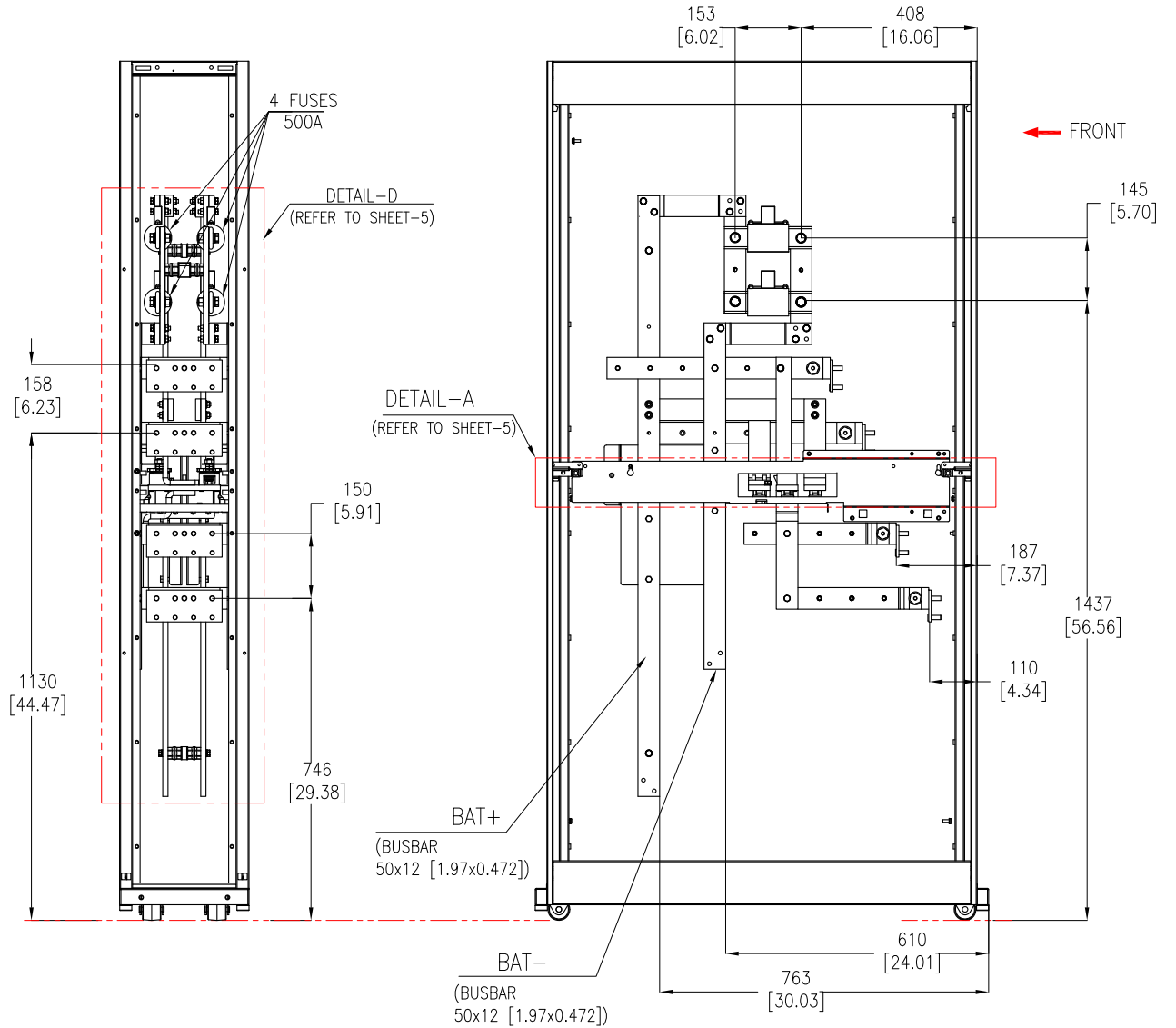
ENGINEER: T MULLER 12-OCT-09

APPROVED: SHERIDAN/F DOSA/C LARSEN/S WAGH 12-OCT-09

FIRST ANGLE PROJ



INTERNAL-ISOMETRIC VIEW



FRONT VIEW

LEFT SIDE VIEW

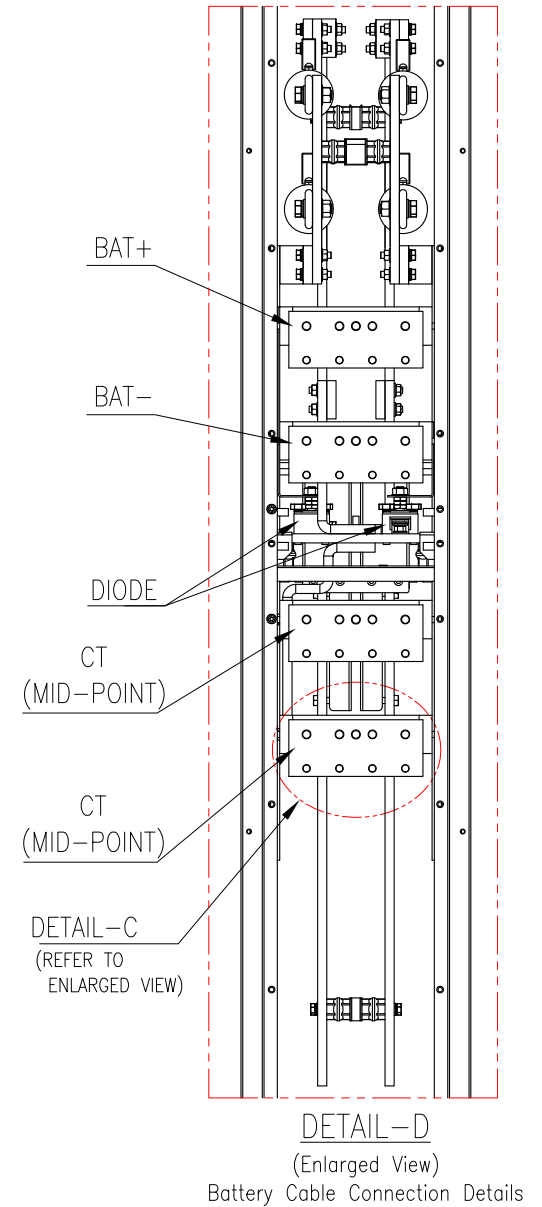
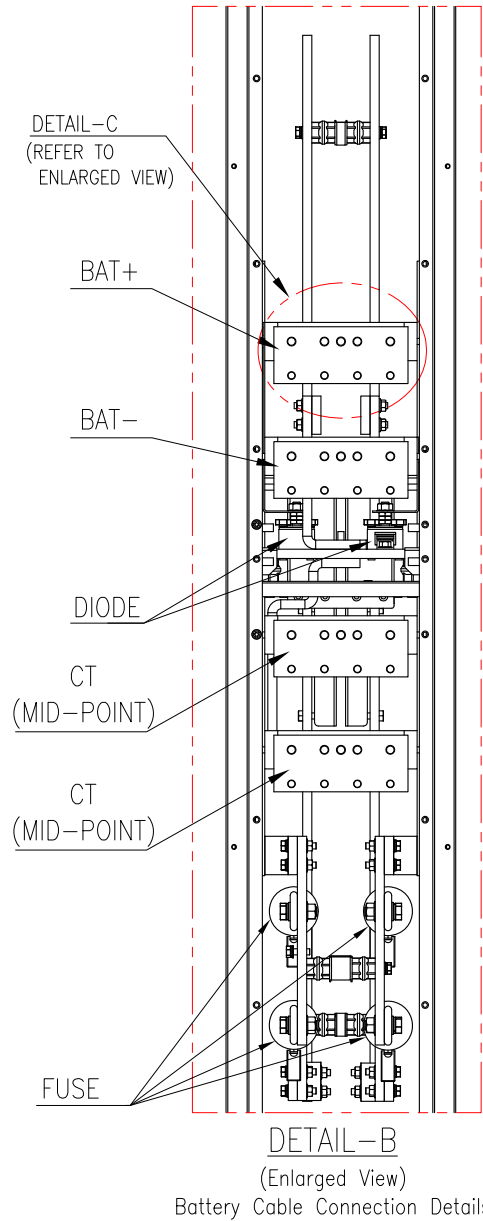
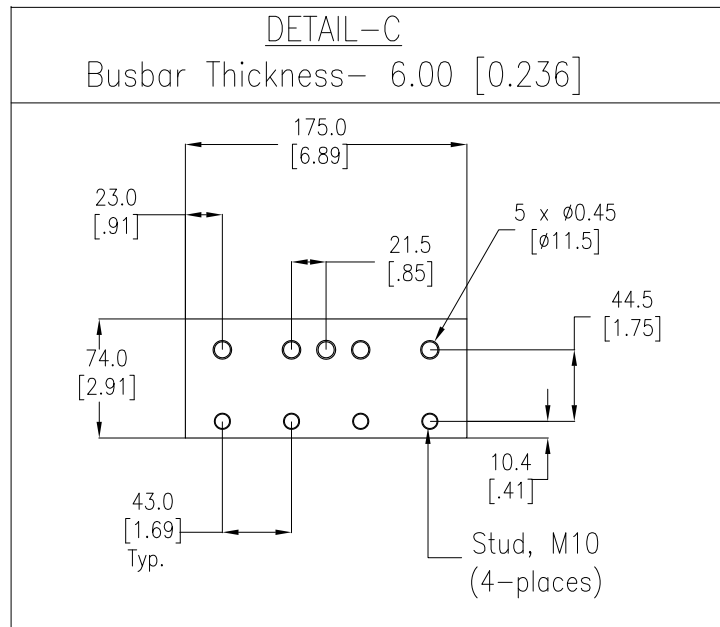
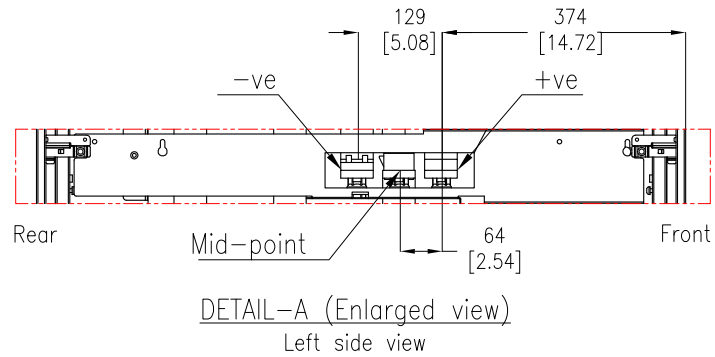
BOTTOM CABLE ENTRY OPTION

- NOTES:
1. INSTALLATION SHALL COMPLY WITH ALL APPLICABLE NATIONAL, STATE AND LOCAL CODES.
 2. PLEASE REFER TO PRODUCT DOCUMENTATION FOR FURTHER DETAILS
 3. UNLESS OTHERWISE SPECIFIED. ALL DIMENSIONS ARE IN MILLIMETERS [INCHES].

THIS DRAWING AND SPECIFICATIONS HEREIN ARE THE PROPERTY OF SCHNEIDER ELECTRIC AND SHALL NOT BE COPIED, REPRODUCED OR USED IN WHOLE OR IN PART, AS THE BASIS FOR THE MANUFACTURE OR SALE OF ITEMS WITHOUT WRITTEN PERMISSION FROM SCHNEIDER ELECTRIC. THIS DRAWING IS BASED UPON LATEST AVAILABLE INFORMATION AND IS SUBJECT TO CHANGE WITHOUT NOTICE.



TITLE:	SYMMETRA PX BATTERY ENCLOSURE SIDE CAR TOP/BOTTOM CABLE ENTRY 400V/480V, 3PH, 500kW INTERNAL VIEW-2	DWG NO:	SYBSC500K500-ME2	REV:	2
PROJECT:	SUBMITTAL DRAWINGS	ENGINEER:	T MULLER	DATE:	12-OCT-09
SHEET:	4 OF 5	APPROVE:	B. SHERMAN / F. DOSA / C. LARSEN / S. WAGH	DATE:	12-OCT-09
				DATE:	12-OCT-09



NOTES:

1. INSTALLATION SHALL COMPLY WITH ALL APPLICABLE NATIONAL, STATE AND LOCAL CODES.
2. PLEASE REFER TO PRODUCT DOCUMENTATION FOR FURTHER DETAILS.
3. UNLESS OTHERWISE SPECIFIED, ALL DIMENSIONS ARE IN MILLIMETERS [INCHES].
4. SOME MECHANICAL DETAILS HAVE BEEN OMITTED FOR CLARITY.

THIS DRAWING AND SPECIFICATIONS HEREIN ARE THE PROPERTY OF SCHNEIDER ELECTRIC AND SHALL NOT BE COPIED, REPRODUCED OR USED IN WHOLE OR IN PART, AS THE BASIS FOR THE MANUFACTURE OR SALE OF ITEMS WITHOUT WRITTEN PERMISSION FROM SCHNEIDER ELECTRIC. THIS DRAWING IS BASED UPON LATEST AVAILABLE INFORMATION AND IS SUBJECT TO CHANGE WITHOUT NOTICE.



TITLE: SYMMETRA PX
BATTERY ENCLOSURE SIDE CAR
TOP/BOTTOM CABLE ENTRY
400V/480V, 3PH, 500kW
INTERNAL-DETAILS

DWG NO: SYBSC500K500-ME3

REV. 2

DRAWN: K NAGENDRA 12-OCT-09
ENGINEER: T MULLER 12-OCT-09

FIRST ANGLE PROJ

PROJECT: SUBMITTAL DRAWINGS SHEET 5 OF 5

APPROVED: B SHERMAN/F DOSA/C LARSEN/S WAGH 12-OCT-09