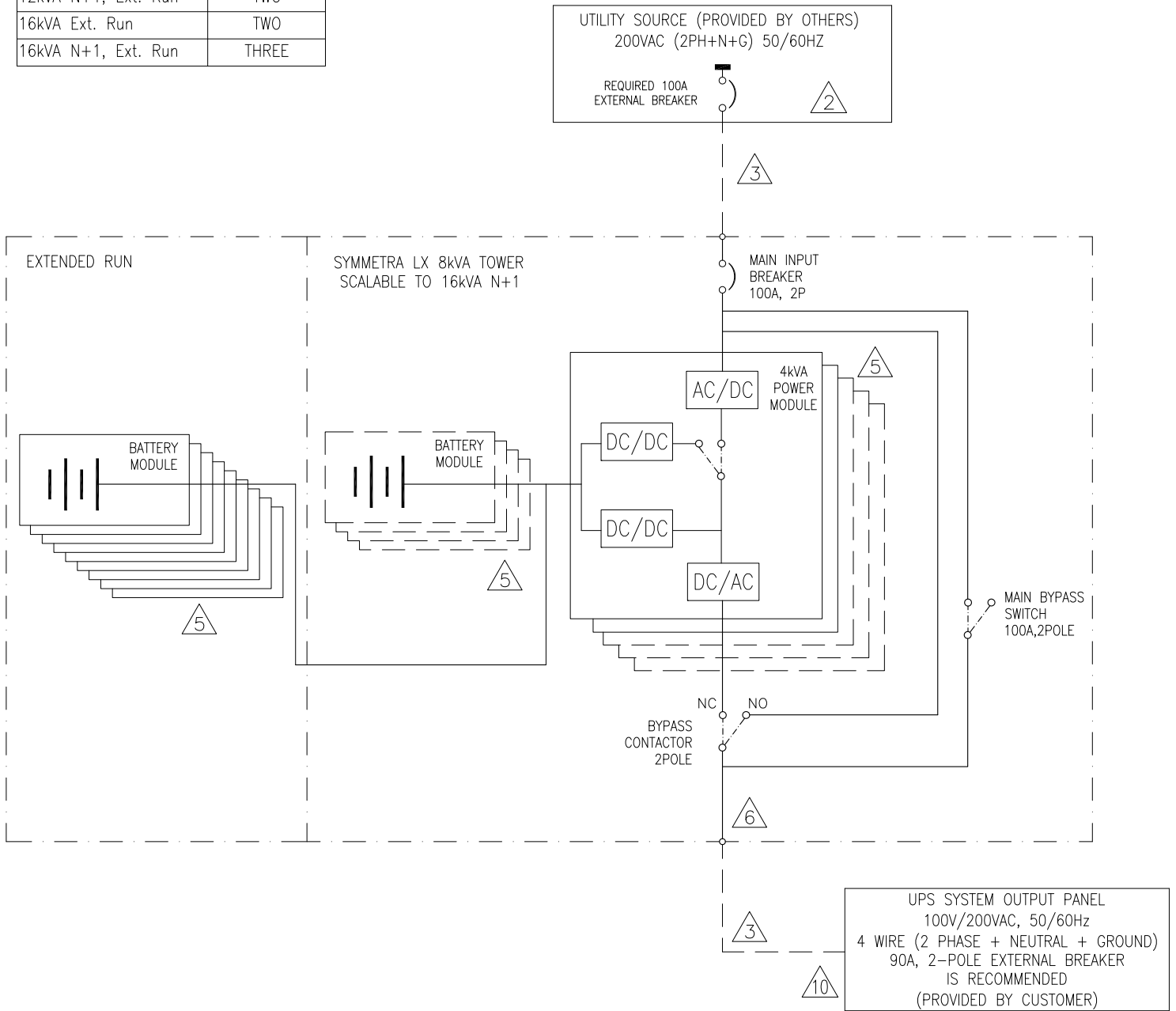


TABLE-1

Rating	Number of Additional Power Module(s)
8kVA N+1, Ext. Run	ONE
12kVA Ext. Run	ONE
12kVA N+1, Ext. Run	TWO
16kVA Ext. Run	TWO
16kVA N+1, Ext. Run	THREE



NOTES:

1. PLEASE REFER TO APC INSTALLATION GUIDE.
- △2. UTILITY SOURCE MUST BE 2PH 200VAC (2PH+N+G) 50/60Hz PROVIDED BY OTHERS. NEUTRAL AND GROUND CONTINUITY IS SHOWN ON SHEET 2 OF THIS DRAWING.
- △3. DASHED LINES BETWEEN UNITS ( - - - - ) REPRESENT CABLING PROVIDED BY OTHERS.
4. ALL AC POWER CABLING IS 2 PHASE WIRE + NEUTRAL + GROUND AT 200VAC.
- △5. THIS DIAGRAM ILLUSTRATES SYLX FOR N CONFIGURATION. SKU NUMBER SYA8K16JXR WILL PROVIDE 2 POWER MODULES (SYPM4KP) AND 9 BATTERY MODULES (SYBT5FR) FOR 8kVA N ONLY CONFIGURATION. ADDITIONAL POWER MODULES AND BATTERY MODULES WOULD HAVE TO BE PURCHASED AS AN OPTION TO GET SCALEABLE CONFIGURATIONS AS IN ACCORDANCE WITH TABLE-1.
- △6. UP TO THREE VARIOUS OPTIONAL PDU PANELS CAN BE INSTALLED TO CONNECT LOAD TO THE UPS.
7. BLOCKS SHOWN WITH DASHED ( - - - - ) LINES REPRESENTS AVAILABLE SPACE/SLOTS.
8. UP TO SIX ADDITIONAL BATTERY CABINETS CAN BE ADDED FOR EXTENDED RUN TIME OPTION.
9. INSTALLATION MUST COMPLY WITH ALL APPLICABLE NATIONAL AND LOCAL CODES.
- △10. A SMALLER OUTPUT BREAKER MAY BE USED TO ALLOW CIRCUIT BREAKER COORDINATION, HOWEVER THIS MAY REDUCE THE MAXIMUM LOAD kVA SUPPORTED.

THIS DRAWING AND SPECIFICATIONS HEREIN ARE THE PROPERTY OF SCHNEIDER ELECTRIC AND SHALL NOT BE COPIED, REPRODUCED OR USED IN WHOLE OR IN PART, AS THE BASIS FOR THE MANUFACTURE OR SALE OF ITEMS WITHOUT WRITTEN PERMISSION FROM SCHNEIDER ELECTRIC. THIS DRAWING IS BASED UPON LATEST AVAILABLE INFORMATION AND IS SUBJECT TO CHANGE WITHOUT NOTICE.



TITLE:  
SYMMETRA LX 8kVA TOWER, XR  
INPUT: 200VAC (2PH+N+G) 50/60Hz  
OUTPUT: 100/200VAC 50/60Hz  
SYSTEM SINGLE-LINE DIAGRAM

PROJECT: SUBMITTAL DRAWINGS SHEET 1 OF 2

DWG NO: SYA8K16JXR-SD

DRAWN: S CUNHA 17-JAN-11

ENGINEER: K WHITE 17-JAN-11

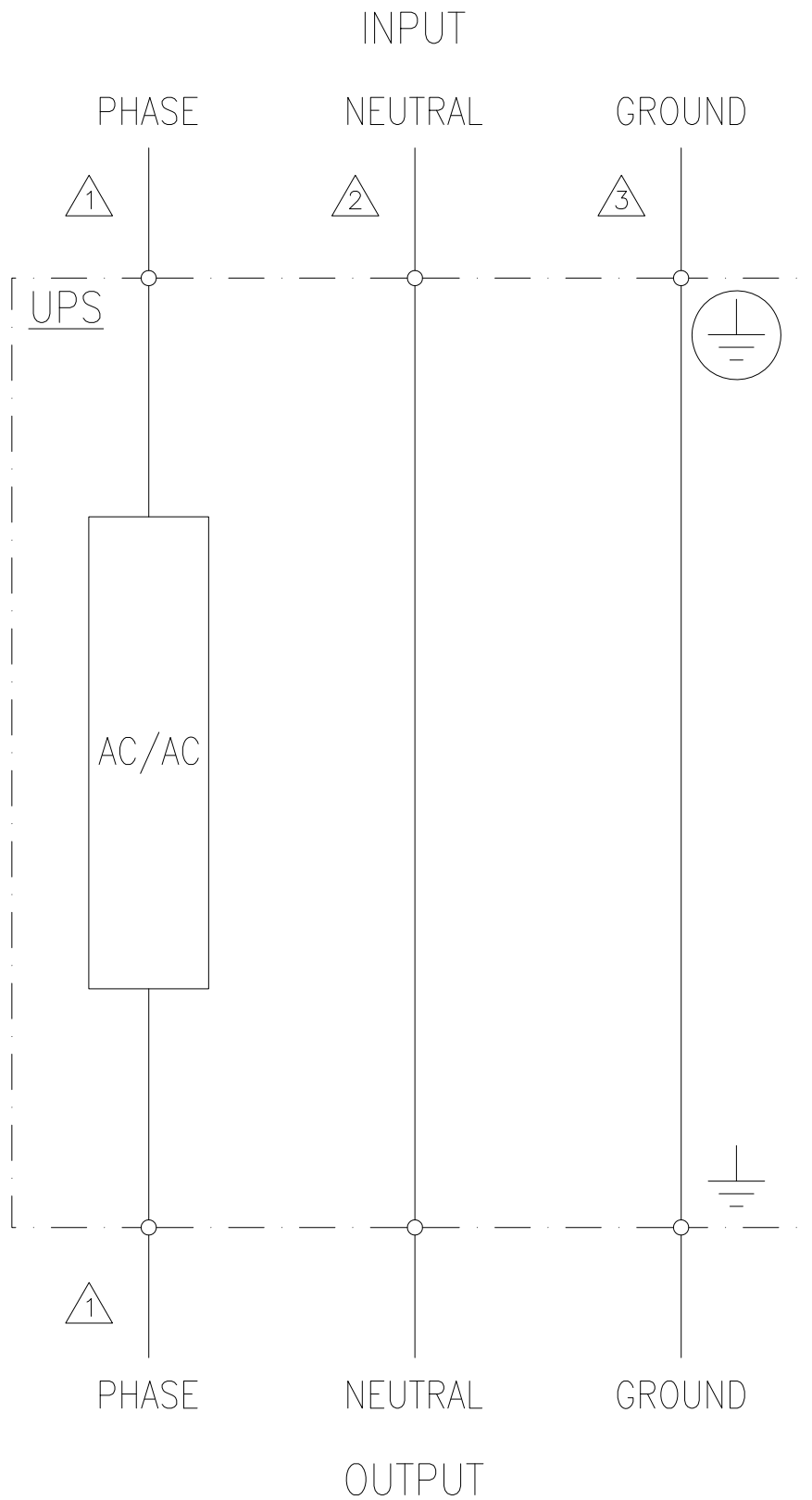
APPROVED: P CHAMPAGNE 17-JAN-11

REV. 2

PROJ. ANGLE

ANGLE

N/A



**NOTES:**

- △1. ONE OR MORE PHASE CONNECTIONS DEPENDING ON MODEL.
- △2. INPUT AND OUTPUT NEUTRAL ARE PERMANENTLY CONNECTED.
- △3. INPUT AND OUTPUT GROUND ARE PERMANENTLY CONNECTED.
- 4. EQUIPMENT IS NOT CONSIDERED A SEPARATELY DERIVED SYSTEM.  
(REF NEC 2008 ARTICLE 250.20.(D))

THIS DRAWING AND SPECIFICATIONS HEREIN ARE THE PROPERTY OF SCHNEIDER ELECTRIC AND SHALL NOT BE COPIED, REPRODUCED OR USED IN WHOLE OR IN PART, AS THE BASIS FOR THE MANUFACTURE OR SALE OF ITEMS WITHOUT WRITTEN PERMISSION FROM SCHNEIDER ELECTRIC. THIS DRAWING IS BASED UPON LATEST AVAILABLE INFORMATION AND IS SUBJECT TO CHANGE WITHOUT NOTICE.



TITLE:  
 SYMMETRA LX 8kVA TOWER, XR  
 INPUT: 200VAC (2φ+NN+G) 50/60Hz  
 OUTPUT: 100/200VAC 50/60Hz  
 NEUTRAL AND GROUND CONTINUITY

DWG NO: SYA8K16JXR-SD  
 DRAWN: S CUNHA  
 ENGINEER: K WHITE  
 APPROVED: P CHAMPAGNE

REV: 0  
 PROJ. ANGLE  
 N/A