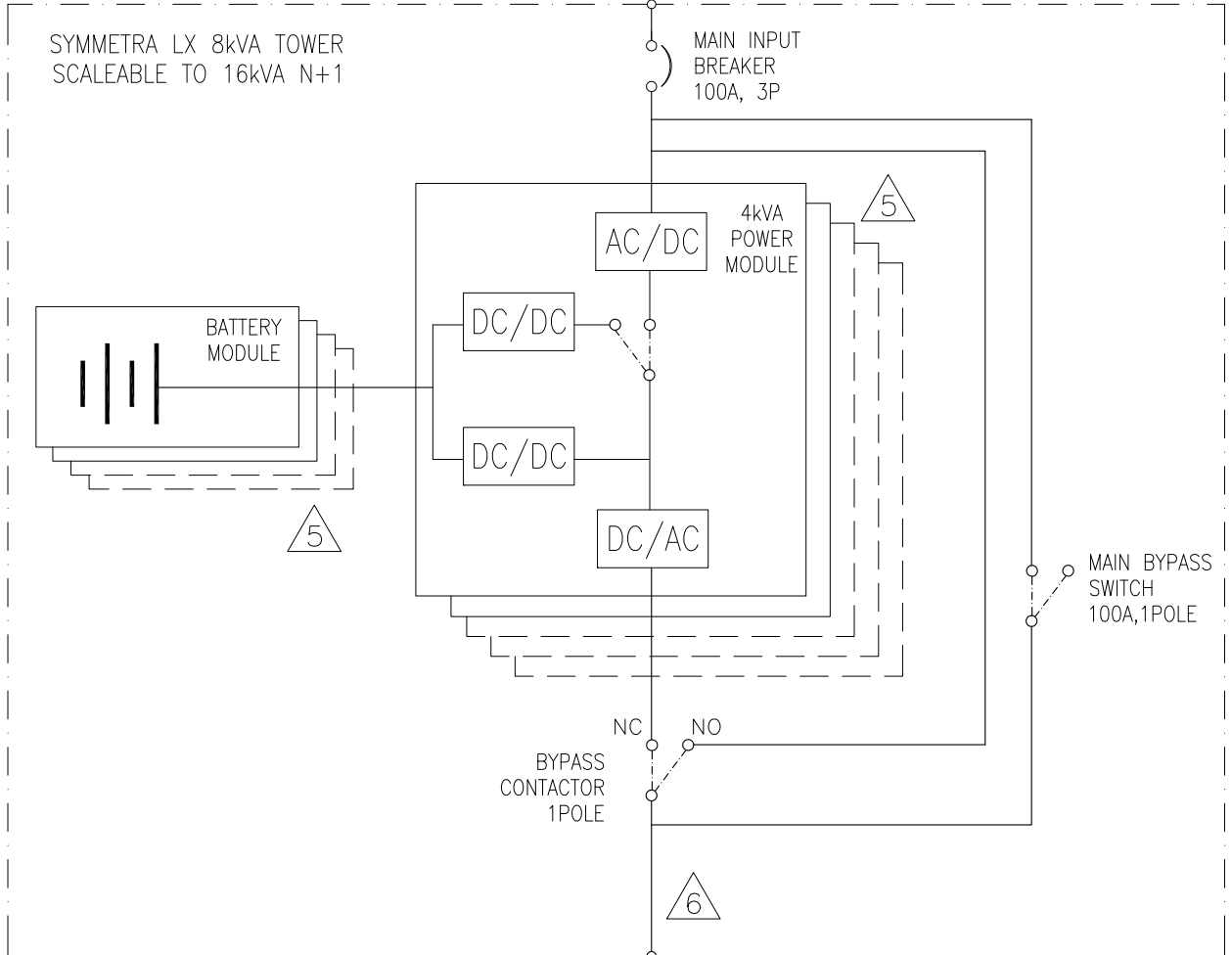


TABLE-1

Rating	Number of Additional Power Module(s)	Number of Additional Battery Module(s)
8kVA N+1, Ext. run	ONE	-
12kVA, Ext. run	ONE	ONE
12kVA N+1, Ext. run	TWO	ONE
16kVA, Ext. run	TWO	TWO
16kVA N+1, Ext. run	THREE	TWO

UTILITY SOURCE (PROVIDED BY OTHERS)  
 220/230/240VAC(1PH+N+G) 50/60Hz OR  
 380/400/415VAC(3PH+N+G) 50/60Hz

REQUIRED  
 100A, 3P  
 EXTERNAL BREAKER



UPS SYSTEM OUTPUT PANEL  
 220/230/240VAC, 50/60Hz  
 3 WIRE (1 PH + N + G)  
 100A, 1P EXTERNAL BREAKER  
 IS RECOMMENDED  
 (PROVIDED BY CUSTOMER)

NOTES:

1. INSTALLATION MUST COMPLY WITH NATIONAL, STATE AND LOCAL ELECTRICAL REGULATIONS.
2. PLEASE REFER TO PRODUCT DOCUMENTATION FOR FURTHER INFORMATION.
- △3. UTILITY SOURCE MUST BE 1PH 220/230/240VAC (1PH+N+G) 50/60Hz OR 3PH 380/400/415VAC(3PH+N+G) 50/60Hz PROVIDED BY OTHERS. NEUTRAL AND GROUND CONTINUITY IS SHOWN ON SHEET 2 OF THIS DRAWING.
- △4. DASHED LINES BETWEEN UNITS ( - - - ) REPRESENT CABLING PROVIDED BY OTHERS.
- △5. THE SYMMETRA LX, SKU NUMBER SYA8K16I, IS SHOWN IN A NON-REDUNDANT CONFIGURATION, HAVING TWO (2) POWER MODULES (SYPM4KI) AND TWO (2) BATTERY MODULES (SYBT5), PROVIDING UP TO 8kVA POWER. FURTHER POWER MODULES (SYPM4KI) AND BATTERY MODULES (SYBT5) CAN BE PURCHASED SEPARATELY AND INSTALLED IN THE SYSTEM IN ACCORDANCE WITH TABLE-1, PROVIDING SCALABILITY AND/OR REDUNDANCY.
- △6. UP TO FOUR (4), OPTIONAL, SYMMETRA LX PDU PANELS CAN BE PURCHASED SEPARATELY AND INSTALLED TO PROVIDE FURTHER LOAD CONNECTIONS.
7. BLOCKS SHOWN WITH DASHED (-----) LINES REPRESENTS AVAILABLE SPACE/SLOTS FOR ADDITIONAL POWER MODULES AND BATTERY UNITS.
8. UP TO SEVEN (7) ADDITIONAL EXTENSION BATTERY CABINETS CAN BE CONNECTED TO INCREASE THE RUNTIME FURTHER.
- △9. A SMALLER OUTPUT BREAKER MAY BE USED TO ALLOW CIRCUIT BREAKER COORDINATION, HOWEVER THIS MAY REDUCE THE MAXIMUM LOAD KVA SUPPORTED.

THIS DRAWING AND SPECIFICATIONS HEREIN ARE THE PROPERTY OF SCHNEIDER ELECTRIC AND SHALL NOT BE COPIED, REPRODUCED OR USED IN WHOLE OR IN PART, AS THE BASIS FOR THE MANUFACTURE OR SALE OF ITEMS WITHOUT WRITTEN PERMISSION FROM SCHNEIDER ELECTRIC. THIS DRAWING IS BASED UPON LATEST AVAILABLE INFORMATION AND IS SUBJECT TO CHANGE WITHOUT NOTICE.

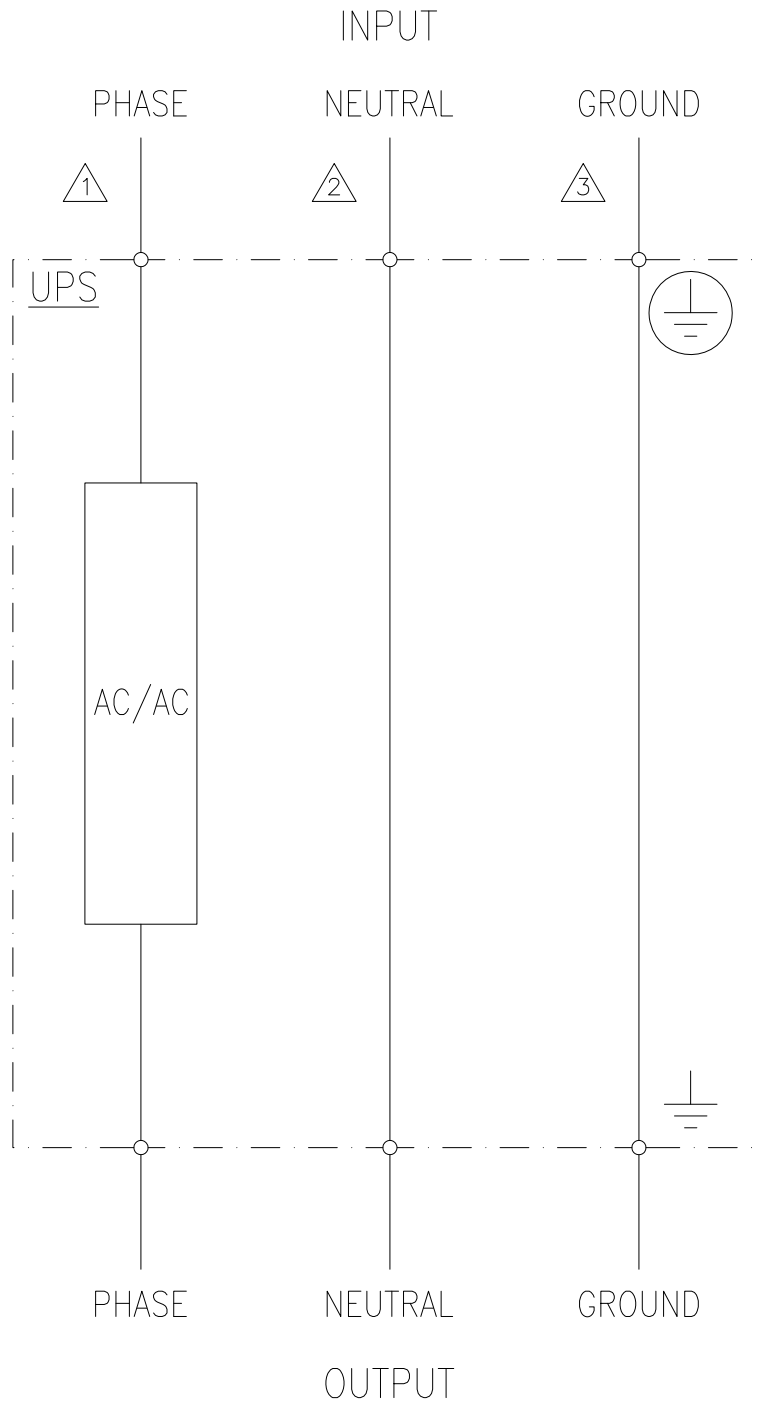


TITLE: SYMMETRA LX 8kVA TOWER  
 INPUT: 220/230/240VAC (1φ+N+G) 50/60Hz  
 OR 380/400/415VAC (3φ+N+G) 50/60Hz  
 OUTPUT: 220/230/240VAC 50/60Hz  
 SYSTEM SINGLE-LINE DIAGRAM

PROJECT: SUBMITTAL DRAWINGS SHEET 1 OF 2

DWG NO: SYA8K16I-SD REV. 2

DRAWN:	S CUNHA	13-JAN-11	PROJ.
ENGINEER:	K WHITE	13-JAN-11	ANGLE
APPROVED:	N WHITING	13-JAN-11	N/A



**NOTES:**

- Δ1. ONE OR MORE PHASE CONNECTIONS DEPENDING ON MODEL.
- Δ2. INPUT AND OUTPUT NEUTRAL ARE PERMANENTLY CONNECTED.
- Δ3. INPUT AND OUTPUT GROUND ARE PERMANENTLY CONNECTED.
- 4. EQUIPMENT IS NOT CONSIDERED A SEPARATELY DERIVED SYSTEM.  
(REF NEC 2008 ARTICLE 250.20.(D))

THIS DRAWING AND SPECIFICATIONS HEREIN ARE THE PROPERTY OF SCHNEIDER ELECTRIC AND SHALL NOT BE COPIED, REPRODUCED OR USED IN WHOLE OR IN PART, AS THE BASIS FOR THE MANUFACTURE OR SALE OF ITEMS WITHOUT WRITTEN PERMISSION FROM SCHNEIDER ELECTRIC. THIS DRAWING IS BASED UPON LATEST AVAILABLE INFORMATION AND IS SUBJECT TO CHANGE WITHOUT NOTICE.



TITLE: SYMMETRA Lx 8kVA TOWER  
 INPUT: 220/230/240VAC (1φ+N+G) 50/60Hz  
 OR 380/400/415VAC (3φ+N+G) 50/60Hz  
 OUTPUT: 220/230/240VAC 50/60Hz  
 NEUTRAL AND GROUND CONTINUITY

DWG NO: SYA8K16I-SD

REV. 0

DRAWN: S CUNHA 13-JAN-11

PROJ. ANGLE

ENGINEER: K WHITE 13-JAN-11

ANGLE

APPROVED: N WHITING 13-JAN-11

N/A