

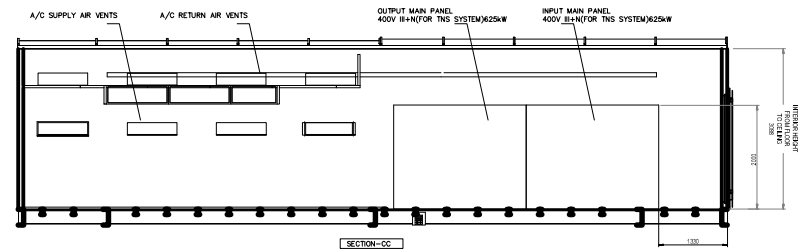
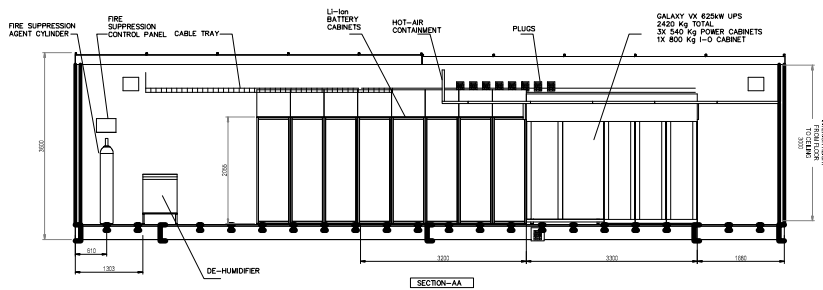
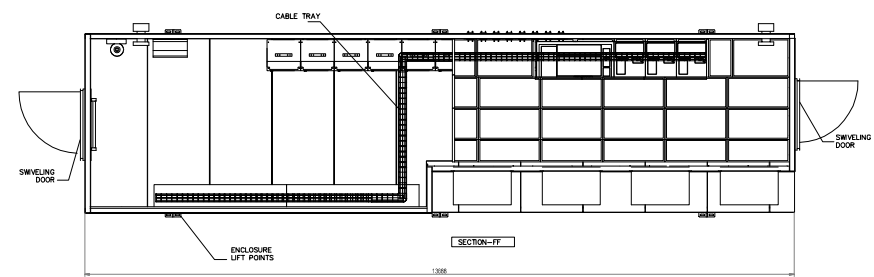
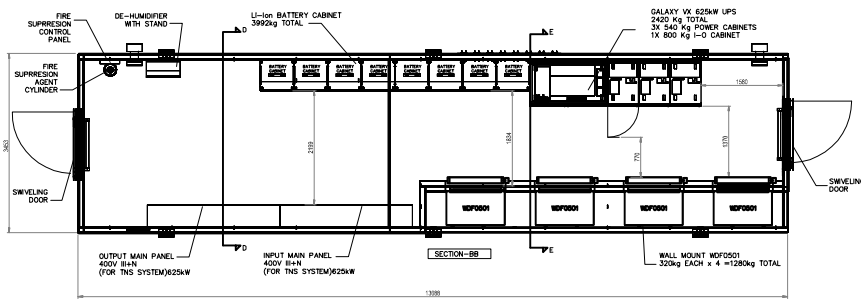
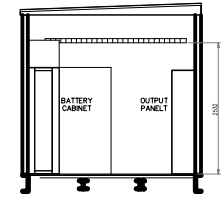
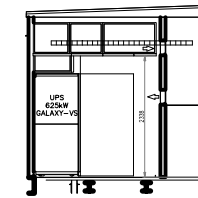
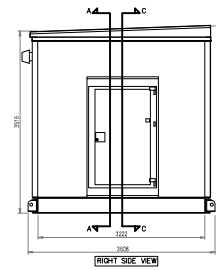
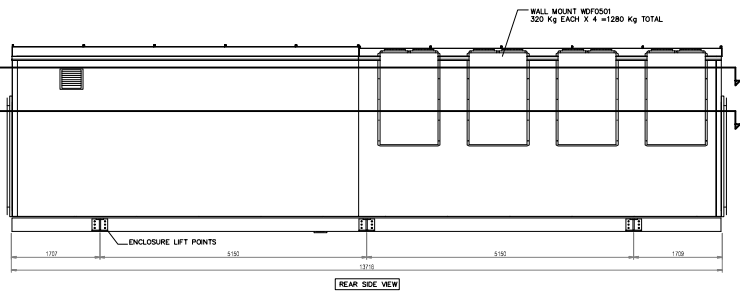
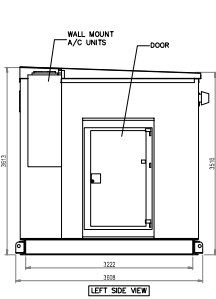
ESTIMATED TOTAL
EMEA POWER MODULE
WEIGHT: XXXX Kg

CONFIGURATION #1
MAXIMUM OPTIONED CONFIGURATION
GVX 625 UPS
VRLA BATTERIES
OKKEN SWITCHBOARDS

NOT FOR CONSTRUCTION

CAUTION: DO NOT SERVICE CABINETS THAT ARE ACROSS THE AISLE FROM EACH OTHER AT THE SAME TIME TO INSURE ADEQUATE EMERGENCY EVACUATION AISLE WIDTH

Part name or family	Part designed by	Part approved by	Validation Date	Part Application code
Element 1	DR. SUAREZ	R. BARRAZO	9 FEB 2010	0100
Element 2				0100
Element 3				0100
Element 4				0100
Element 5				0100
Element 6				0100
Scale	0.02	Technical Specification		Units of measure : mm or CM/2 CM/3
Schneider Electric		EMEA 625kW VRLA BATTIS		Doc. Rev: 0
Document Number: XXXXXXXX		Sheet: 1/2		Reference design



ESTIMATED TOTAL
EMEA POWER MODULE
WEIGHT: XXXX Kg

CONFIGURATION #1
MAXIMUM OPTIONED CONFIGURATION
GVX 625 UPS
Li-Ion BATTERIES
OKKEN SWITCHBOARDS

NOT FOR CONSTRUCTION

CAUTION: DO NOT SERVICE CABINETS THAT ARE ACROSS THE AISLE FROM EACH OTHER AT THE SAME TIME TO INSURE ADEQUATE EMERGENCY EVACUATION AISLE WIDTH

Part name or family	Part designed by	Part approved by	Validation Date	Part Application code
Control 1	DR. SUWANEZ	R. BARRICHO	9 FEB 2010	None
Control 2				None
Control 3				None
Control 4				None
Control 5				None
Control 6				None
Scale	0.02	Technical Specification	Units of measure :	mm or CM/2 CM/3
Schneider Electric		EMEA 625kW VRLA BATTIS		Doc. Rev. 0
Document Number: XXXXXXXXX		Date: XXXXXXXXX		Sheet: 2/2
Reference design				Original format #1