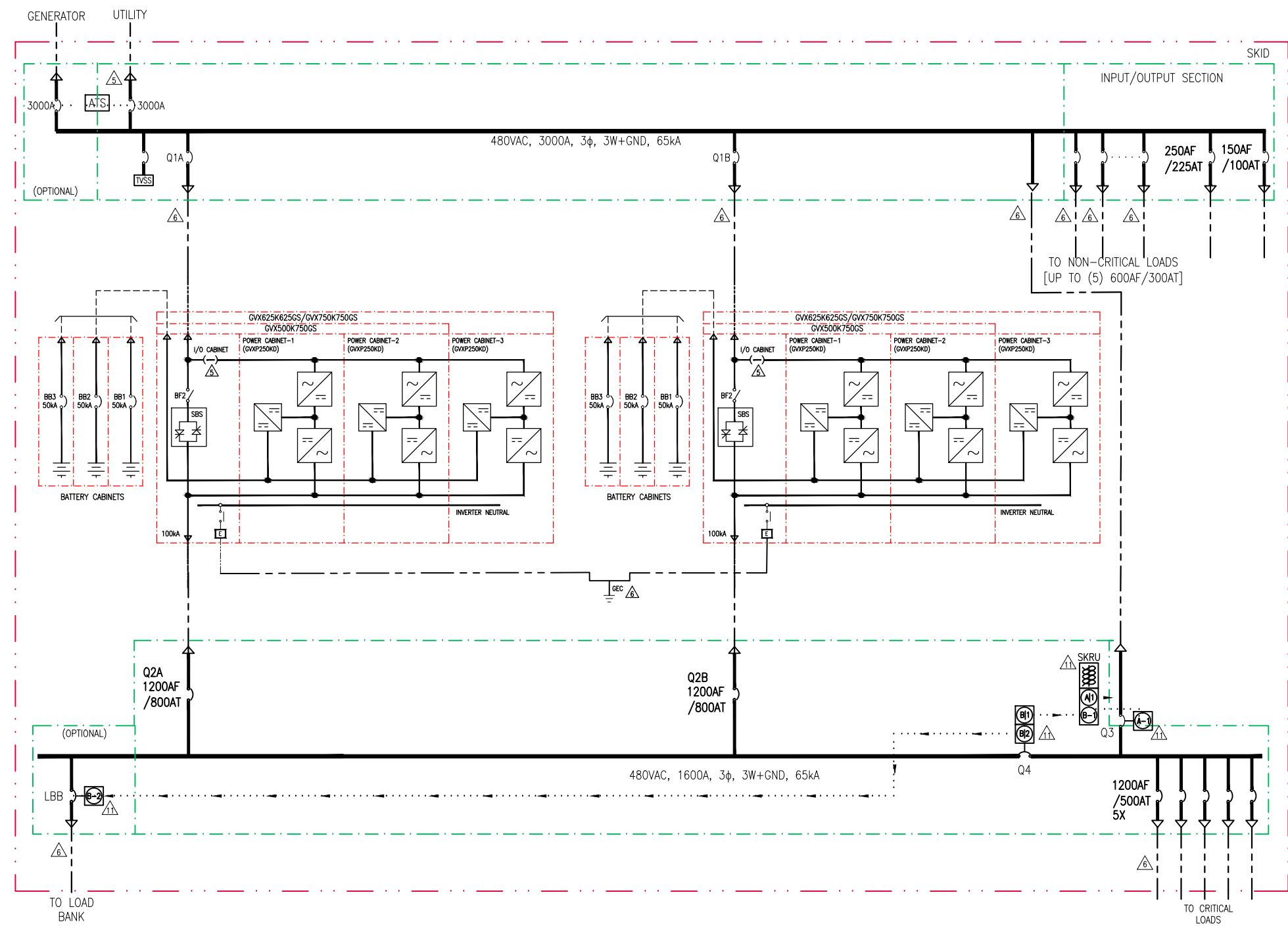


DEVICE	FRAME TRIP	RMS SYM	TYPE	ACCESSORIES
Q1A, Q1B	1000AT	65kA	ICCB	24DC SHUNT TRIP, 3A/3B AUX CONTACT
Q4, LBB	1600AT	65kA	ICCB	24DC SHUNT TRIP, 3A/3B AUX CONTACT
Q3	1600AT	65kA	ICCB	120DC SHUNT TRIP, 3A/3B AUX CONTACT

DEVICE	CURRENT	RATED SHORT CIRCUIT CURRENT
UPS AC IN	2x 791A	100,000A SYMMETRICAL
UPS AC OUT	2X 752A	100,000A SYMMETRICAL
UPS DC	2X 1364A	50,000A SYMMETRICAL
SSW		200,000A SYMMETRICAL

LEGEND:

	AC CABLE (PROVIDED BY OTHERS)
	DC CABLE (PROVIDED BY OTHERS)
	AC BUS
	INTERLOCK



- NOTES:**
- INSTALLATION SHALL COMPLY WITH ALL APPLICABLE LOCAL AND NATIONAL CODES.
 - PLEASE REFER TO PRODUCT MANUAL FOR DETAILS.
 - DRAWING DEPICTS POWER SYSTEM CONNECTIONS AND IS NOT REPRESENTATIVE OF PHYSICAL LAYOUT, PLEASE REFER TO MECHANICAL DRAWINGS FOR PHYSICAL LAYOUT.
 - ALL BREAKERS SHALL BE 100% CONTINUOUS DUTY RATED AND COORDINATED WITH REQUIRED SYSTEM SETTINGS AS DETAILED IN SYMMETRA MW INSTALLATION MANUAL. BREAKER SIZING IS BASED ON NOMINAL MAINS VOLTAGE.
 - AC SOURCE SHALL BE 480VAC, 3-WIRE, WYE CONNECTED, 3 ϕ (CONTACT APC IF OTHER).
 - AC CABLING SHALL BE 600V RATED, 3-WIRE + GROUND.
 - DC SOURCE SHALL BE MINIMUM (2) 384VDC HALF-STRINGS, 2-WIRE + GROUND.
 - DC CABLING SHALL BE 600V RATED, 2-WIRE + GROUND, EACH CIRCUIT TO BE RUN IN SEPARATE CONDUITS, POSITIVE, NEGATIVE + GROUND. SEE 5-LINE DIAGRAM FOR DETAILS.
 - BATTERY SIZING IS BASED ON A MAXIMUM 1 VOLT DROP PER HALF-STRING AT NOMINAL RATED DC CURRENT. CE SHALL ADJUST CABLE SIZE BASED ON INSTALLATION PARAMETERS.
 - THIS SYSTEM SHALL BE INSTALLED AS A SEPARATELY DERIVED SYSTEM IN ACCORDANCE WITH LOCAL AND NATIONAL CODES. N.E.C. 250.30(a)(3). THE GROUNDING ELECTRODE CONDUCTOR (GEC) IS PROVIDED BY OTHERS.
 - KEY INTERLOCKS WITH SKRU, SCHEME 39, BETWEEN Q3 & Q4, ARE INCLUDED AS STANDARD WITH THE SYSTEM. KEY INTERLOCKS WITH SKRU, SCHEME 29, BETWEEN Q4 & LBB, ARE OPTIONAL AND ARE NOT INCLUDED AS STANDARD WITH THE SYSTEM. LBB IS OPTIONAL AND NOT INCLUDED AS STANDARD WITH THE SYSTEM.
 - CABLE LUGS ARE PROVIDED BY OTHERS.

SUBMITTED TO
ENGINEERING
FOR REVIEW

FILENAME/PATH: S:\SYSTEMS_ENGINEERING\MODULAR_DATACENTER_PROJECTS\GVX_EVALUATION\1250KW_480V_GVX_POWER_SKID_ELECTRICAL_ONLINE_REV00.DWG																											
0	INITIAL RELEASE	L. PERRY	DD-MM-YY	DD-MMM-YY	M. TAVARES	DD-MMM-YY																					
REV	DESCRIPTION	DRWN	DATE	ENGR	DATE	APPR																					
<table border="0"> <tr> <td colspan="2">PFMPS1250NAVX</td> <td colspan="2" style="text-align: center;">REVISIONS</td> <td colspan="2"></td> <td></td> </tr> <tr> <td colspan="2">THIS DRAWING AND SPECIFICATIONS HEREIN ARE THE PROPERTY OF SCHNEIDER ELECTRIC AND SHALL NOT BE COPIED, REPRODUCED OR USED IN WHOLE OR IN PART, AS THE BASIS FOR THE MANUFACTURE OR SALE OF ITEMS WITHOUT WRITTEN PERMISSION FROM SCHNEIDER ELECTRIC. THIS DRAWING IS BASED UPON LATEST AVAILABLE INFORMATION AND IS SUBJECT TO CHANGE WITHOUT NOTICE.</td> <td colspan="2"> </td> <td colspan="2"> TITLE: 1250 kW GALAXY VX SKID [2x625kW] INPUT: 480VAC, 3ϕ, DUAL MAIN OUTPUT: 480VAC, 3ϕ, 1200kW SINGLE-LINE DIAGRAM </td> <td>DWG NO:</td> </tr> <tr> <td colspan="2">PROJECT: MAN</td> <td colspan="2">REP</td> <td colspan="2">SHEET 1 OF 1</td> <td> DWG NO: 0 DRAWN: L. PERRY DD-MMM-YY ENGINEER: M. TAVARES DD-MMM-YY APPROVED: M. TAVARES DD-MMM-YY </td> </tr> </table>							PFMPS1250NAVX		REVISIONS					THIS DRAWING AND SPECIFICATIONS HEREIN ARE THE PROPERTY OF SCHNEIDER ELECTRIC AND SHALL NOT BE COPIED, REPRODUCED OR USED IN WHOLE OR IN PART, AS THE BASIS FOR THE MANUFACTURE OR SALE OF ITEMS WITHOUT WRITTEN PERMISSION FROM SCHNEIDER ELECTRIC. THIS DRAWING IS BASED UPON LATEST AVAILABLE INFORMATION AND IS SUBJECT TO CHANGE WITHOUT NOTICE.				TITLE: 1250 kW GALAXY VX SKID [2x625kW] INPUT: 480VAC, 3 ϕ , DUAL MAIN OUTPUT: 480VAC, 3 ϕ , 1200kW SINGLE-LINE DIAGRAM		DWG NO:	PROJECT: MAN		REP		SHEET 1 OF 1		DWG NO: 0 DRAWN: L. PERRY DD-MMM-YY ENGINEER: M. TAVARES DD-MMM-YY APPROVED: M. TAVARES DD-MMM-YY
PFMPS1250NAVX		REVISIONS																									
THIS DRAWING AND SPECIFICATIONS HEREIN ARE THE PROPERTY OF SCHNEIDER ELECTRIC AND SHALL NOT BE COPIED, REPRODUCED OR USED IN WHOLE OR IN PART, AS THE BASIS FOR THE MANUFACTURE OR SALE OF ITEMS WITHOUT WRITTEN PERMISSION FROM SCHNEIDER ELECTRIC. THIS DRAWING IS BASED UPON LATEST AVAILABLE INFORMATION AND IS SUBJECT TO CHANGE WITHOUT NOTICE.				TITLE: 1250 kW GALAXY VX SKID [2x625kW] INPUT: 480VAC, 3 ϕ , DUAL MAIN OUTPUT: 480VAC, 3 ϕ , 1200kW SINGLE-LINE DIAGRAM		DWG NO:																					
PROJECT: MAN		REP		SHEET 1 OF 1		DWG NO: 0 DRAWN: L. PERRY DD-MMM-YY ENGINEER: M. TAVARES DD-MMM-YY APPROVED: M. TAVARES DD-MMM-YY																					
						PROJ ANGLE N/A																					