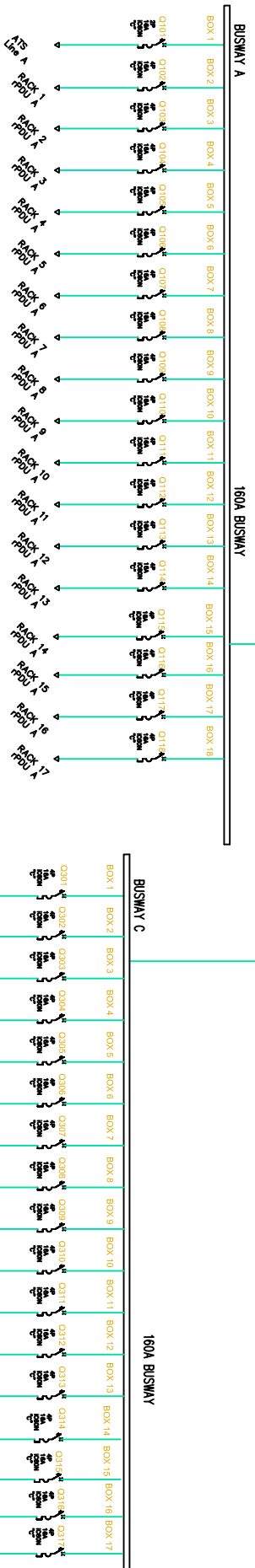
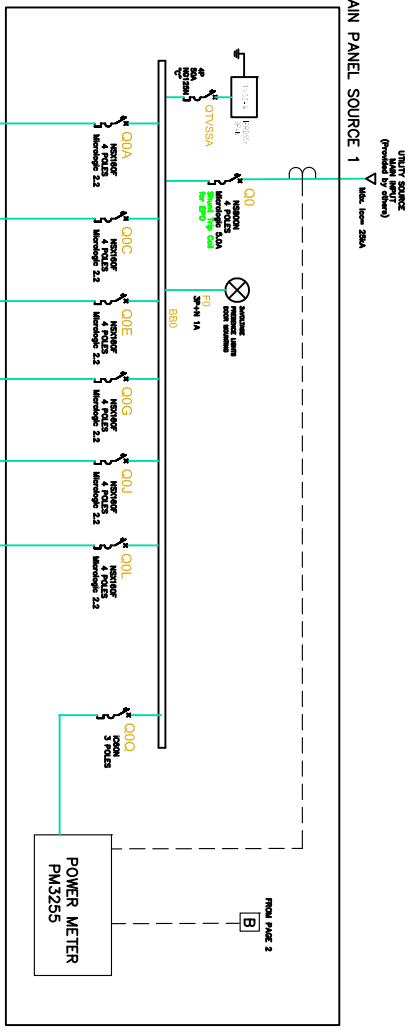


DEVICE RATING					
DEVICE	RATING	TYPE	MAKE	MODEL	ACCESSORIES
00	800A Micro 5.0kA 690Vdc	SEE NOTE-4	Schneider Electric	NS900N	SHUNT TRIP COIL
00A, 00C, 00E, 00G, 00I, 00L, 22A	4 POLE BREAKER		Schneider Electric	NSX160F	
BUSWAY A & C	250kV, 690Vdc	4 & 2 POLE	Schneider Electric	KN 160A	END FEED & TAP OFF.
Q101 TO 116	440V, 16A	Circuit Breakers	Schneider Electric	IC60N	
Q301 TO 315	440V, 16A	4 & 2 POLE Circuit Breakers	Schneider Electric	IC60N	
Panel Source 1	25kA, 800A	PRISMA P	Schneider Electric	Prisma P	VOLTAGE PRESENCE LIGHTS



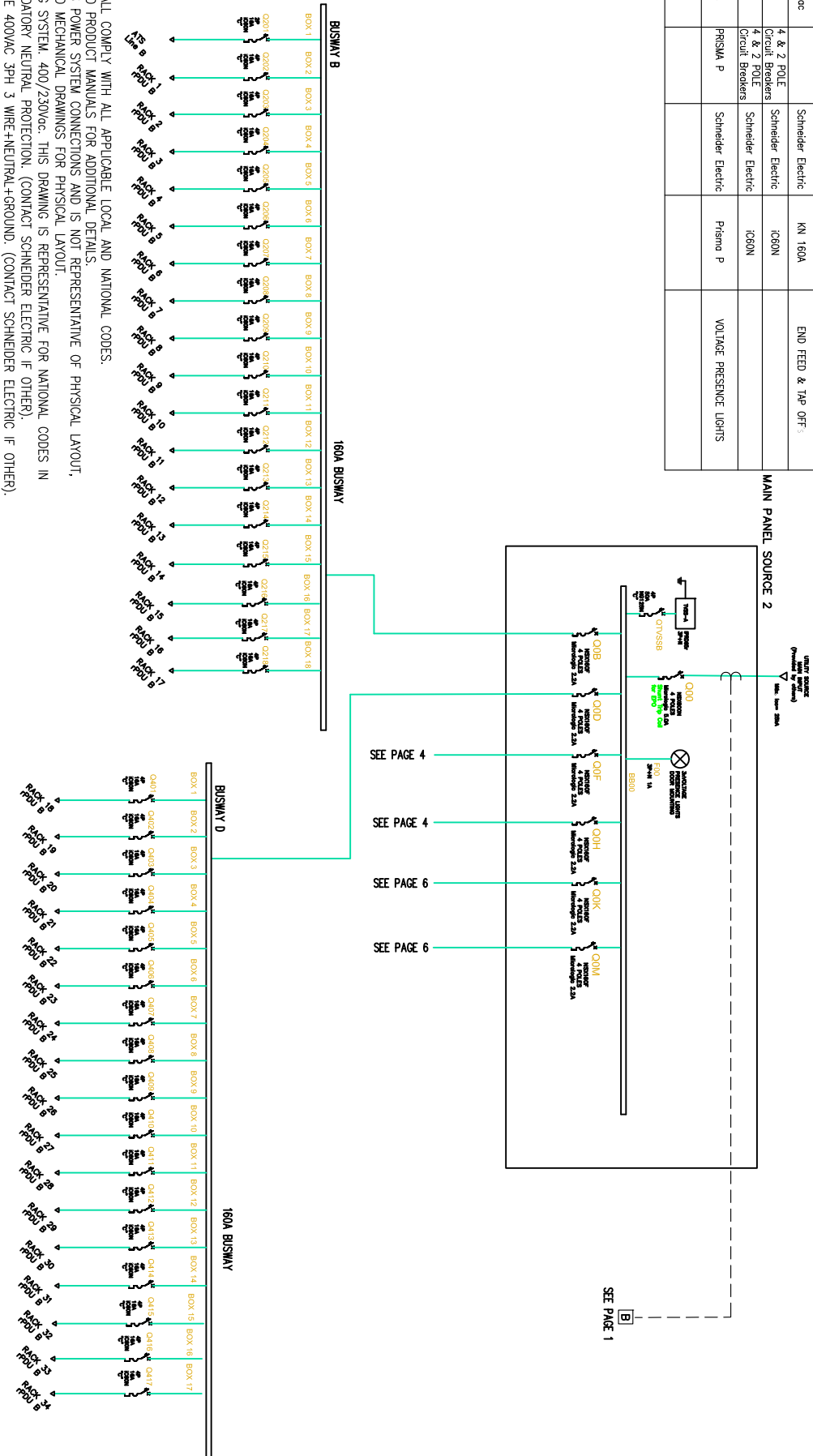
- NOTES:**
1. INSTALLATION SHALL COMPLY WITH ALL APPLICABLE LOCAL AND NATIONAL CODES.
 2. PLEASE REFER TO PRODUCT MANUALS FOR ADDITIONAL DETAILS.
 3. DRAWING DEPICTS POWER SYSTEM CONNECTIONS AND IS NOT REPRESENTATIVE OF PHYSICAL LAYOUT. PLEASE REFER TO MECHANICAL DRAWINGS FOR PHYSICAL LAYOUT.
 4. TN-S GROUNDING SYSTEM. 400/230Vdc. THIS DRAWING IS REPRESENTATIVE FOR NATIONAL CODES IN WHICH IT IS MANDATORY NEUTRAL PROTECTION. (CONTACT SCHNEIDER ELECTRIC IF OTHER). AC SOURCE TO BE 400VAC 3PH 3 WIRE+NEUTRAL+GROUND. (CONTACT SCHNEIDER ELECTRIC IF OTHER).
- CABLING COLOUR CODE:** L1= BROWN, L2=BLACK, L3=GREY, N=BLUE, GND=YELLOW/GREEN STRIP
5. MAXIMUM AVAILABLE FAULT CURRENT IS 25kAC AT ENTRANCE POINT.
 6. ALL AC POWER CABLING TO BE 1000V RATED
 7. RACK FRAME AND SKINS ARE ELECTRICALLY CONNECTED AND TIED TO CHASSIS GROUND.
 8. THE GROUNDING ELECTRODE CONDUCTOR IS PROVIDED BY OTHERS.
 9. QUALITY OF ENERGY SUPPLIED BY OTHERS SHALL COMPLY WITH EN-50160 REQUIREMENTS.
 10. STANDARD FOR CABLING CALCULATION REGARDING IEC 364

THIS DRAWING AND SPECIFICATIONS HEREIN ARE THE PROPERTY OF SCHNEIDER ELECTRIC AND SHALL NOT BE COPIED, REPRODUCED OR USED IN WHOLE OR IN PART AS THE BASIS FOR THE MANUFACTURE OR SALE OF ITEMS WITHOUT WRITTEN PERMISSION FROM SCHNEIDER ELECTRIC. THIS DRAWING IS BASED UPON LATEST AVAILABLE INFORMATION AND IS SUBJECT TO CHANGE WITHOUT NOTICE.

Schneider Electric

TITLE:	MODULAR DATACENTER INFRASTRUCTURE 495kW BUSWAY NTC EMEA SCHNEIDER ELECTRIC IT MODULE SYSTEM ONLINE DIAGRAM
DWG NO:	PFMIEG495E2E102B
DRW:	M. UHRMAN
ENGR:	M. UHRMAN
APPR:	M. UHRMAN
SHEET:	1 OF 7
DATE:	14 JUL 15
PROJ:	08 DEC 15
REV:	02
ANG:	ANGLE
PROJ:	PROJECTION
DATE:	18 MAR 16
REV:	N.A

DEVICE RATING					
DEVICE	RATING	TYPE	MAKE	MODEL	ACCESSORIES
000	BOA Micrologic 5.0A, 690VAC	SEE NOTE-4	Schneider Electric	NS800M	SHUNT TRIP COIL
00B, 00C, 00F, 00H, 00K, 00M, 00P	160A Micrologic 2.2A	4 Pole Breaker	Schneider Electric	NSX160F	
BUSBAR B & D	160A, 690VAC		Schneider Electric	KN 160A	END FEED & TAP OFF.
0201 T0 216	440V, 16A	4 & 2 POLE Circuit Breakers	Schneider Electric	iC60N	
0401 T0 415	440V, 16A	4 & 2 POLE Circuit Breakers	Schneider Electric	iC60N	
Panel Source 2	25kA, 800A	PRISMA P	Schneider Electric	Prisma P	VOLTAGE PRESENCE LIGHTS



- NOTES:
1. INSTALLATION SHALL COMPLY WITH ALL APPLICABLE LOCAL AND NATIONAL CODES.
 2. PLEASE REFER TO PRODUCT MANUALS FOR ADDITIONAL DETAILS.
 3. DRAWING DEPICTS POWER SYSTEM CONNECTIONS AND IS NOT REPRESENTATIVE OF PHYSICAL LAYOUT. PLEASE REFER TO MECHANICAL DRAWINGS FOR PHYSICAL LAYOUT.
 4. TN-S GROUNDING SYSTEM. 400/230VAC. THIS DRAWING IS REPRESENTATIVE FOR NATIONAL CODES IN WHICH IT IS MANDATORY NEUTRAL PROTECTION. (CONTACT SCHNEIDER ELECTRIC IF OTHER).
- AC SOURCE TO BE 400VAC 3PH 3 WIRE+NEUTRAL+GROUND. (CONTACT SCHNEIDER ELECTRIC IF OTHER).
- CABLING COLOUR CODE: L1= BROWN, L2=BLACK, L3=GREY, N=BLUE, GND=YELLOW/GREEN STRIP
5. MAXIMUM AVAILABLE FAULT CURRENT IS 25KAC AT ENTRANCE POINT.
 6. ALL AC POWER CABLING TO BE 1000V RATED
 7. RACK FRAME AND SKINS ARE ELECTRICALLY CONNECTED AND TIED TO CHASSIS GROUND.
 8. THE GROUNDING ELECTRODE CONDUCTOR IS PROVIDED BY OTHERS.
 9. QUALITY OF ENERGY SUPPLIED BY OTHERS SHALL COMPLY WITH EN-50160 REQUIREMENTS.
 10. STANDARD FOR CABLING CALCULATION REGARDING IEC 364

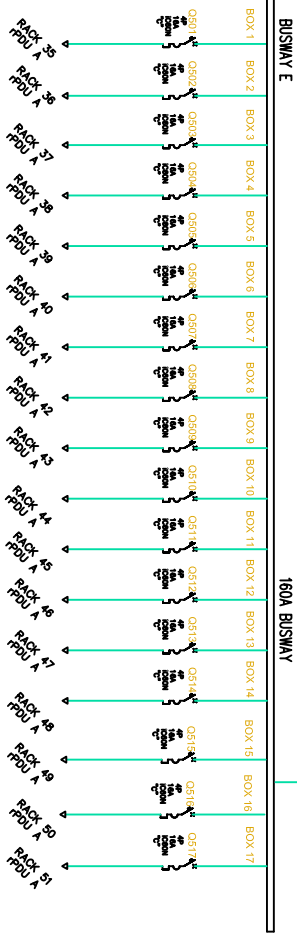
THIS DRAWING AND SPECIFICATIONS HEREIN ARE THE PROPERTY OF SCHNEIDER ELECTRIC AND SHALL NOT BE COPIED, REPRODUCED OR USED IN WHOLE OR IN PART AS THE BASIS FOR THE MANUFACTURE OR SALE OF ITEMS WITHOUT WRITTEN PERMISSION FROM SCHNEIDER ELECTRIC. THIS DRAWING IS BASED UPON LATEST AVAILABLE INFORMATION AND IS SUBJECT TO CHANGE WITHOUT NOTICE.

Schneider Electric

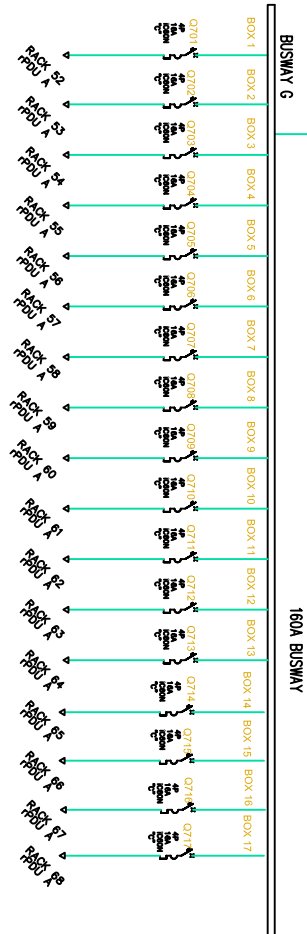
TITLE: MODULAR DATACENTER INFRASTRUCTURE 495kW BUSWAY NFC EMA SCHNEIDER ELECTRIC IT MODULE SYSTEM ONLINE DIAGRAM PROJECT: 495kW NFC BUSWAY EMA SHEET 2 OF 7

DWG NO: PFMEIG4955E2E102B REV: 02

DRAWN: M. UHRMAN 14 JUL 15 ANGLE PROJECTION
ENGINEER: M. UHRMAN 08 DEC 15
APPROVED: M. UHRMAN 18 MAR 16 N.A



FROM PAGE 1

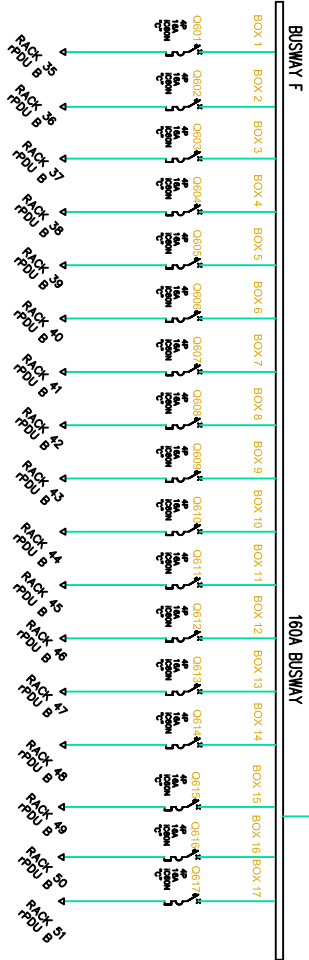


FROM PAGE 1

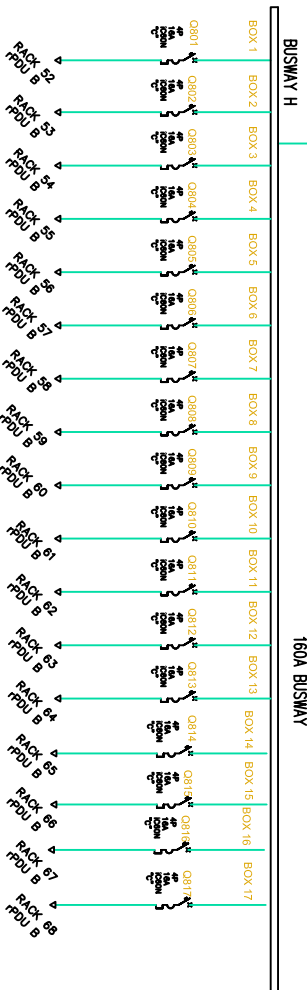
THIS DRAWING AND SPECIFICATIONS HEREIN ARE THE PROPERTY OF SCHNEIDER ELECTRIC AND SHALL NOT BE COPIED, REPRODUCED OR USED IN WHOLE OR IN PART AS THE BASIS FOR THE MANUFACTURE OR SALE OF ITEMS WITHOUT WRITTEN PERMISSION FROM SCHNEIDER ELECTRIC. THIS DRAWING IS BASED UPON LATEST AVAILABLE INFORMATION AND IS SUBJECT TO CHANGE WITHOUT NOTICE.



TITLE:	MODULAR DATACENTER INFRASTRUCTURE 495kW NFC BUSWAY EMEA SCHNEIDER ELECTRIC IT MODULE SYSTEM ONE LINE DIAGRAM	DWG NO:	PFMEIG495E2E102B	REV:	02
PROJECT:	495kW NFC BUSWAY EMEA	DRAWN:	M. UHRHAN	DATE:	14 JUL 15
SHEET:	3 OF 7	ENGINEER:	M. UHRHAN	DATE:	08 DEC 15
		APPROVED:	M. UHRHAN	DATE:	18 MAR 16
				PROJECTION:	1 st ANGLE



FROM PAGE 2

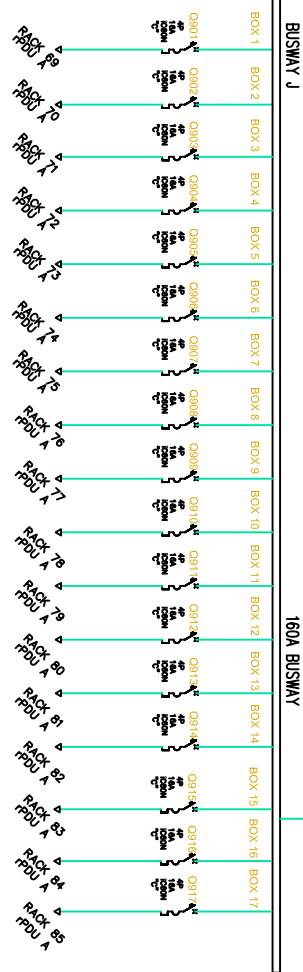


FROM PAGE 2

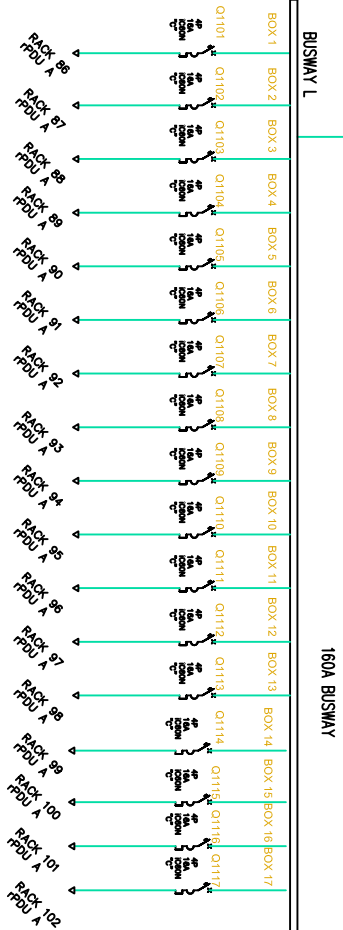
THIS DRAWING AND SPECIFICATIONS HEREIN ARE THE PROPERTY OF SCHNEIDER ELECTRIC AND SHALL NOT BE COPIED, REPRODUCED OR USED IN WHOLE OR IN PART AS THE BASIS FOR THE MANUFACTURE OR SALE OF ITEMS WITHOUT WRITTEN PERMISSION FROM SCHNEIDER ELECTRIC. THIS DRAWING IS BASED UPON LATEST AVAILABLE INFORMATION AND IS SUBJECT TO CHANGE WITHOUT NOTICE.



TITLE:	MODULAR DATACENTER INFRASTRUCTURE	DWG NO.:	PMIEG4955E2E102B	REV:	02
	4955AW NFC BUSWAY EMEA	DRAWN:	M. UHRMAN	14 JUL 15	ANGLE
	SCHNEIDER ELECTRIC TI MODULE	ENGINEER:	M. UHRMAN	08 DEC 15	PROJECTION
	SYSTEM ONE LINE DIAGRAM	APPROVED:	M. UHRMAN	18 MAR 16	N.A.
	PROJECT: 4955AW NFC BUSWAY EMEA				
	SHEET 4 OF 7				



FROM PAGE 1

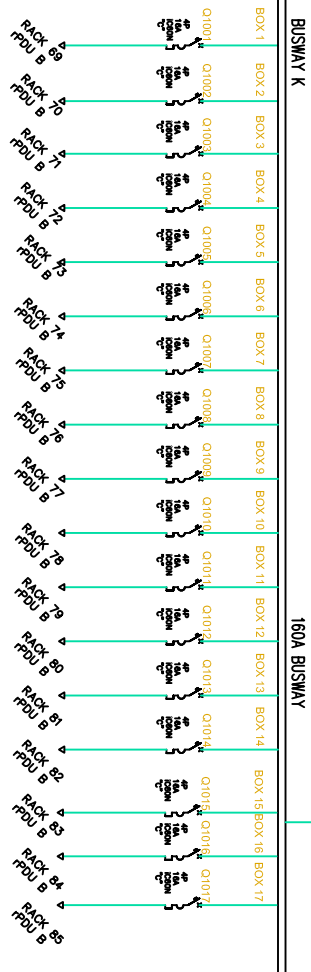


FROM PAGE 1

THIS DRAWING AND SPECIFICATIONS HEREIN ARE THE PROPERTY OF SCHNEIDER ELECTRIC AND SHALL NOT BE COPIED, REPRODUCED OR USED IN WHOLE OR IN PART AS THE BASIS FOR THE MANUFACTURE OR SALE OF ITEMS WITHOUT WRITTEN PERMISSION FROM SCHNEIDER ELECTRIC. THIS DRAWING IS BASED UPON LATEST AVAILABLE INFORMATION AND IS SUBJECT TO CHANGE WITHOUT NOTICE.

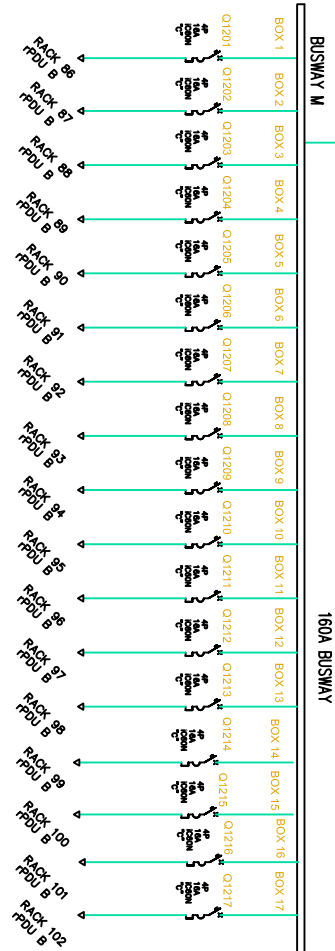


TITLE:	MODULAR DATACENTER INFRASTRUCTURE 495AW NFC BUSWAY EMEA SCHNEIDER ELECTRIC TI MODULE SYSTEM ONE LINE DIAGRAM	DWG NO:	PFMIEG495E2E102B	REV:	02
PROJECT:	495AW NFC BUSWAY EMEA	SHEET:	5 OF 7	DRAWN:	M. UHRMAN
				ENGINEER:	M. UHRMAN
				APPROVED:	M. UHRMAN
					18 MAR 16
					ANGLE PROJECTION
					N.A.



160A BUSWAY

FROM PAGE 2



160A BUSWAY

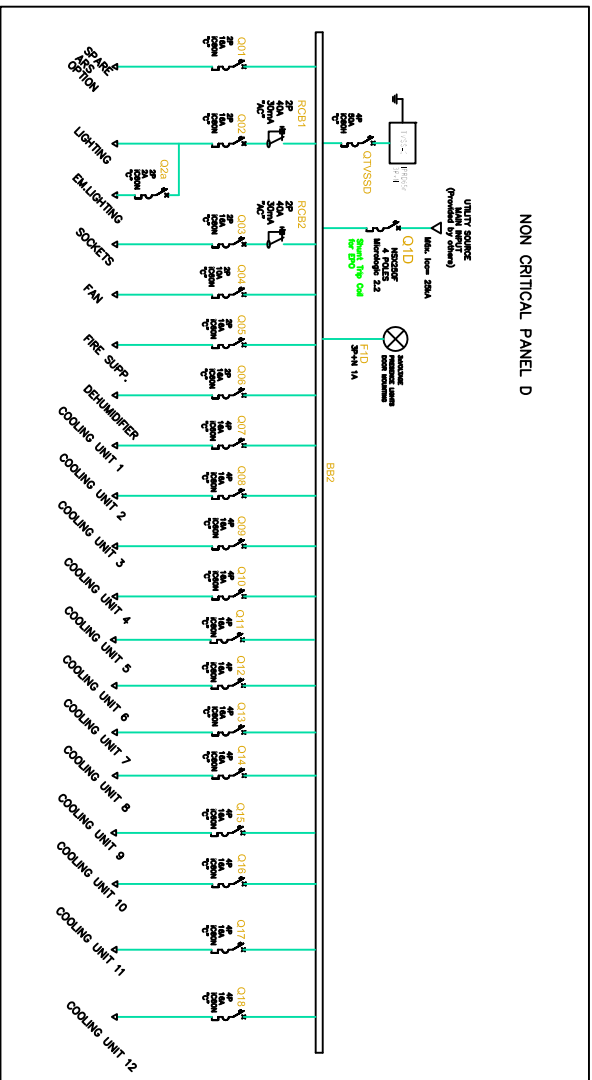
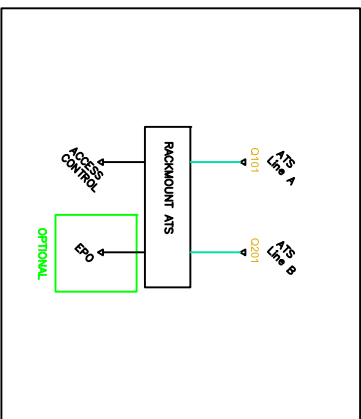
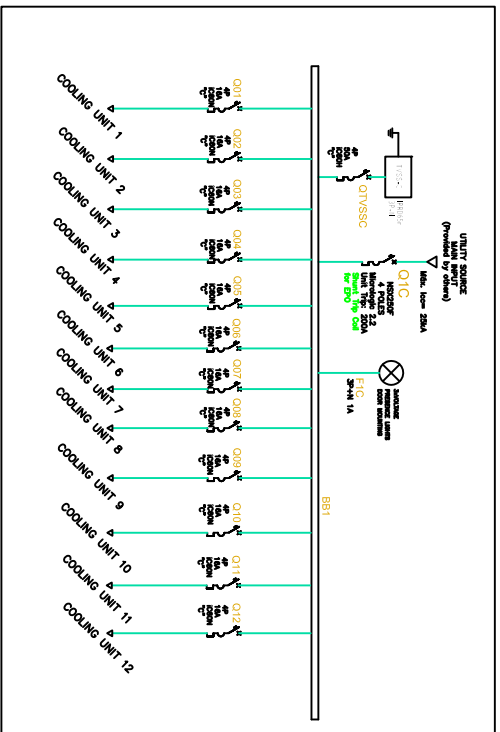
FROM PAGE 2

THIS DRAWING AND SPECIFICATIONS HEREIN ARE THE PROPERTY OF SCHNEIDER ELECTRIC AND SHALL NOT BE COPIED, REPRODUCED OR USED IN WHOLE OR IN PART AS THE BASIS FOR THE MANUFACTURE OR SALE OF ITEMS WITHOUT WRITTEN PERMISSION FROM SCHNEIDER ELECTRIC. THIS DRAWING IS BASED UPON LATEST AVAILABLE INFORMATION AND IS SUBJECT TO CHANGE WITHOUT NOTICE.



TITLE:	MODULAR DATACENTER INFRASTRUCTURE 495kW NFC BUSWAY EMEA SCHNEIDER ELECTRIC IT MODULE SYSTEM ONE LINE DIAGRAM	DWG NO:	PFMIEG495E2E102B	REV:	02
PROJECT:	495kW NFC BUSWAY EMEA	DRAWN:	M. UHRMAN	DATE:	14 JUL 15
SHEET:	6 OF 7	ENGINEER:	M. UHRMAN	DATE:	08 DEC 15
		APPROVED:	M. UHRMAN	DATE:	18 MAR 16
				ANGLE PROJECTION:	N.A.

DEVICE RATING					
DEVICE	RATING	TYPE	MAKE	MODEL	ACCESSORIES
△ O1C, O1D	250A Micro12.2, 630VAC	SEE NOTE-4	Schneider Electric	NSX250F	SHUNT TRIP COIL
001C-12C	440V, 18A	4 POLE Circuit Breakers	Schneider Electric	ic80N	
001D-06D	440V, 18A	2 POLE Circuit Breakers	Schneider Electric	ic80N	
007D-18D	440V, 18A	4 POLE Circuit Breakers	Schneider Electric	ic80N	
RCB1 & RCB2	400V, 40A 30mA	2 Pole RCB	Schneider Electric	ID	
Non Critical Panel	250A, 630A	PRISMA P	Schneider Electric	Prisma P	VOLTAGE PRESENCE LIGHTS



- NOTES:
1. INSTALLATION SHALL COMPLY WITH ALL APPLICABLE LOCAL AND NATIONAL CODES.
 2. PLEASE REFER TO PRODUCT MANUALS FOR ADDITIONAL DETAILS.
 3. DRAWING DEPICTS POWER SYSTEM CONNECTIONS AND IS NOT REPRESENTATIVE OF PHYSICAL LAYOUT. PLEASE REFER TO MECHANICAL DRAWINGS FOR PHYSICAL LAYOUT.
 4. TN-S GROUNDING SYSTEM. 400/230Vdc. THIS DRAWING IS REPRESENTATIVE FOR NATIONAL CODES IN WHICH IT IS MANDATORY NEUTRAL PROTECTION. (CONTACT SCHNEIDER ELECTRIC IF OTHER). AC SOURCE TO BE 400VAC 3PH 3 WIRE-NEUTRAL+GROUND. (CONTACT SCHNEIDER ELECTRIC IF OTHER). CABLING COLOUR CODE: L1= BROWN, L2=BLACK, L3=GREY, N=BLUE, GND=YELLOW/GREEN STRIP
 5. MAXIMUM AVAILABLE FAULT CURRENT IS 25kAC AT ENTRANCE POINT.
 6. ALL AC POWER CABLING TO BE 1000V RATED
 7. RACK FRAME AND SKINS ARE ELECTRICALLY CONNECTED AND TIED TO CHASSIS GROUND.
 8. THE GROUNDING ELECTRODE CONDUCTOR IS PROVIDED BY OTHERS.
 9. QUALITY OF ENERGY SUPPLIED BY OTHERS SHALL COMPLY WITH EN-50160 REQUIREMENTS.
 10. STANDARD FOR CABLING CALCULATION REGARDING IEC 364

THIS DRAWING AND SPECIFICATIONS HEREIN ARE THE PROPERTY OF SCHNEIDER ELECTRIC AND SHALL NOT BE COPIED, REPRODUCED OR USED IN WHOLE OR IN PART AS THE BASIS FOR THE MANUFACTURE OR SALE OF ITEMS WITHOUT WRITTEN PERMISSION FROM SCHNEIDER ELECTRIC. THIS DRAWING IS BASED UPON LATEST AVAILABLE INFORMATION AND IS SUBJECT TO CHANGE WITHOUT NOTICE.

Schneider Electric

TITLE: MODULAR DATACENTER INFRASTRUCTURE 495kW BUSWAY NFC EMEA SCHNEIDER ELECTRIC IT MODULE SYSTEM ONLINE DIAGRAM PROJECT: 495kW NFC BUSWAY EMEA SHEET 7 OF 7

DWG NO: PFMIEG495E2E102B REV: 02

DRAWN: M. UHRMAN 14 JUL 15 ANGLE PROJECTION

ENGINEER: M. UHRMAN 08 DEC 15

APPROVED: M. UHRMAN 18 MAR 16 N.A