

- NOTES:
1. INSTALLATION MUST COMPLY ALL APPLICABLE NATIONAL AND LOCAL ELECTRICAL REGULATIONS
  2. PLEASE REFER TO PRODUCT MANUAL FOR DETAILED INFORMATION.
  3. ALL DIMENSIONS ARE IN MILLIMETERS. UNLESS OTHERWISE SPECIFIED.
  4. CABLE ENTRY IS FROM THE BOTTOM OF THE CABINET.
  5. NET WEIGHT OF THE ENCLOSURE WITH BATTERY UNITS INSTALLED IS 1025 kg.
  - △6. COG DETAILS.

CENTER OF GRAVITY	WITH BATTERIES
X DISTANCE	356 mm
Y DISTANCE	850 mm
Z DISTANCE	360 mm

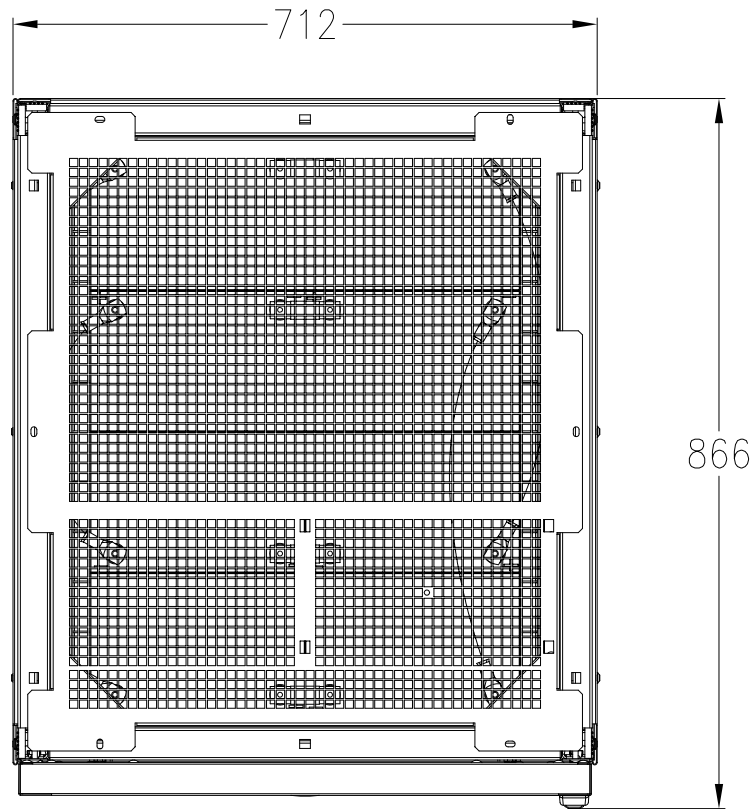
THIS DRAWING AND SPECIFICATIONS HEREIN ARE THE PROPERTY OF SCHNEIDER ELECTRIC AND SHALL NOT BE COPIED, REPRODUCED OR USED IN WHOLE OR IN PART, AS THE BASIS FOR THE MANUFACTURE OR SALE OF ITEMS WITHOUT WRITTEN PERMISSION FROM SCHNEIDER ELECTRIC. THIS DRAWING IS BASED UPON LATEST AVAILABLE INFORMATION AND IS SUBJECT TO CHANGE WITHOUT NOTICE.



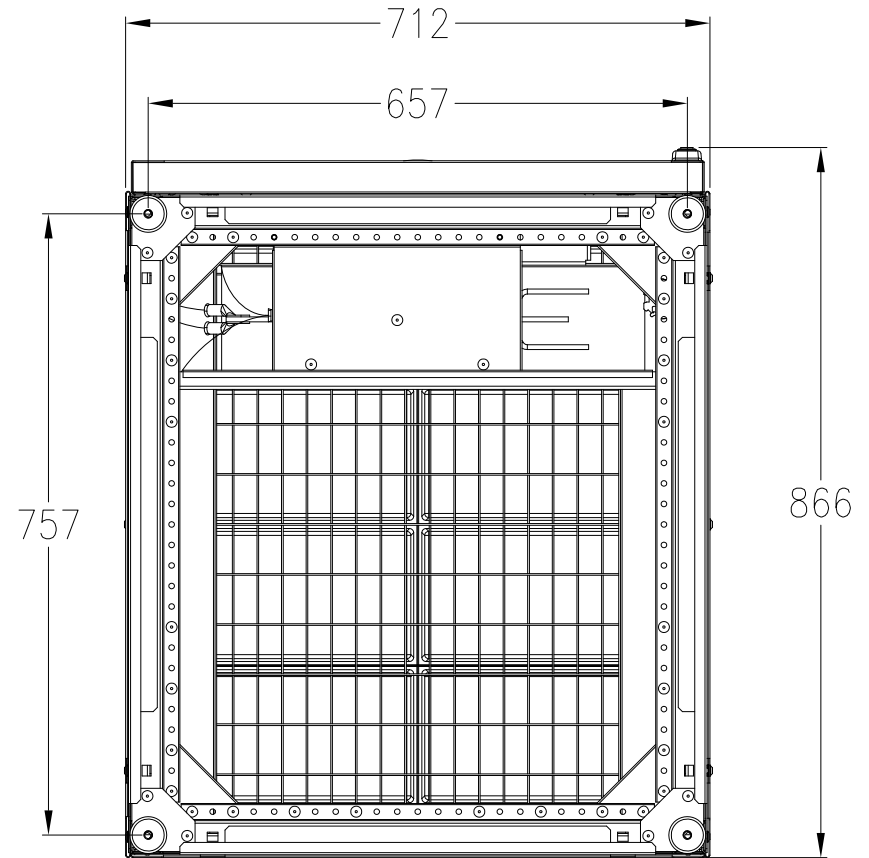
TITLE:  
 SYMMETRA PX ET 160  
 BATTERY CABINET  
 WITH XPV2500 BATTERIES  
 MAIN MECHANICAL

PROJECT: SUBMITTAL DRAWINGS SHEET 1 OF 4

DWG NO:	SYPBV96K160HB	REV.	0
DRAWN:	C KRISHNA	18-MAR-14	FIRST ANGLE PROJECTION
ENGINEER:	BIN-COMPPELL BAI	18-MAR-14	
APPROVED:	MATTHIEU SAAS	18-MAR-14	



TOP VIEW



BOTTOM VIEW

NOTES:

1. INSTALLATION MUST COMPLY ALL APPLICABLE NATIONAL AND LOCAL ELECTRICAL REGULATIONS
2. PLEASE REFER TO PRODUCT MANUAL FOR DETAILED INFORMATION.
3. ALL DIMENSIONS ARE IN MILLIMETERS. UNLESS OTHERWISE SPECIFIED.
4. FOR BOTTOM CABLE ENTRY REMOVE BOTTOM CONDUIT PLATES, DRILL/PUNCH HOLES WITH-IN PROVIDED CABLE ENTRY AREA. REFIT COVER AND INSTALL CONDUITS.

THIS DRAWING AND SPECIFICATIONS HEREIN ARE THE PROPERTY OF SCHNEIDER ELECTRIC AND SHALL NOT BE COPIED, REPRODUCED OR USED IN WHOLE OR IN PART, AS THE BASIS FOR THE MANUFACTURE OR SALE OF ITEMS WITHOUT WRITTEN PERMISSION FROM SCHNEIDER ELECTRIC. THIS DRAWING IS BASED UPON LATEST AVAILABLE INFORMATION AND IS SUBJECT TO CHANGE WITHOUT NOTICE.



TITLE:

SYMMETRA PX ET 160  
BATTERY CABINET  
WITH XPV2500 BATTERIES  
TOP AND BOTTOM VIEW

DWG NO:

SYPBV96K160HB

REV: 0

DRAWN:

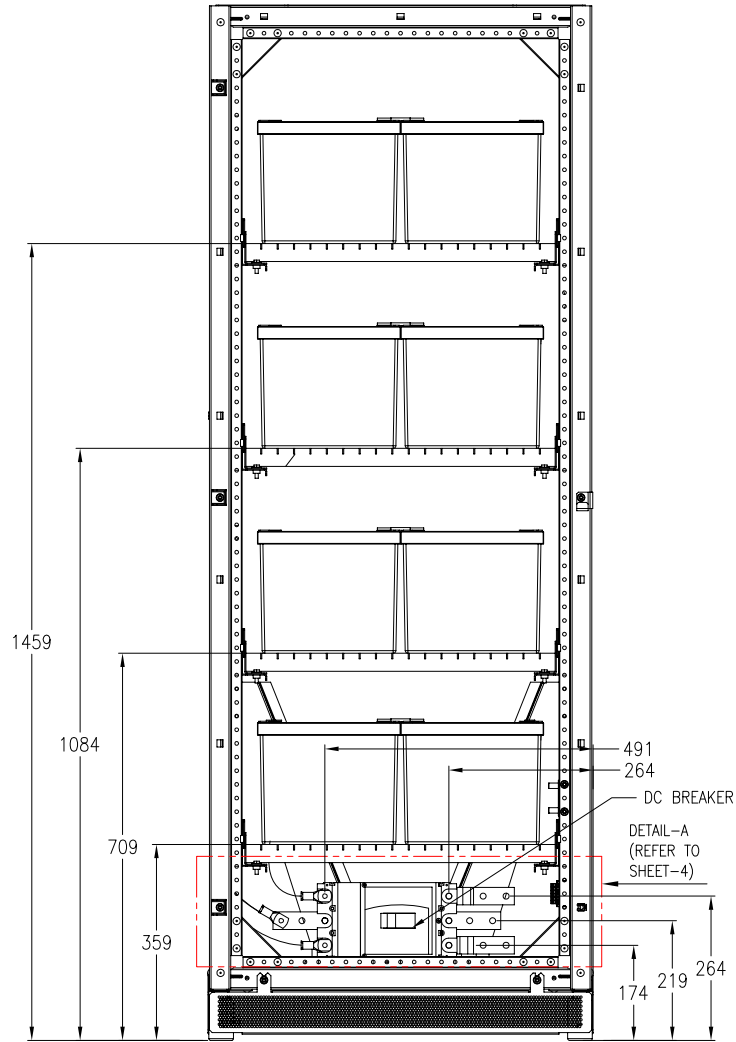
C KRISHNA 18-MAR-14

ENGINEER: BIN-COMPPELL BAI 18-MAR-14

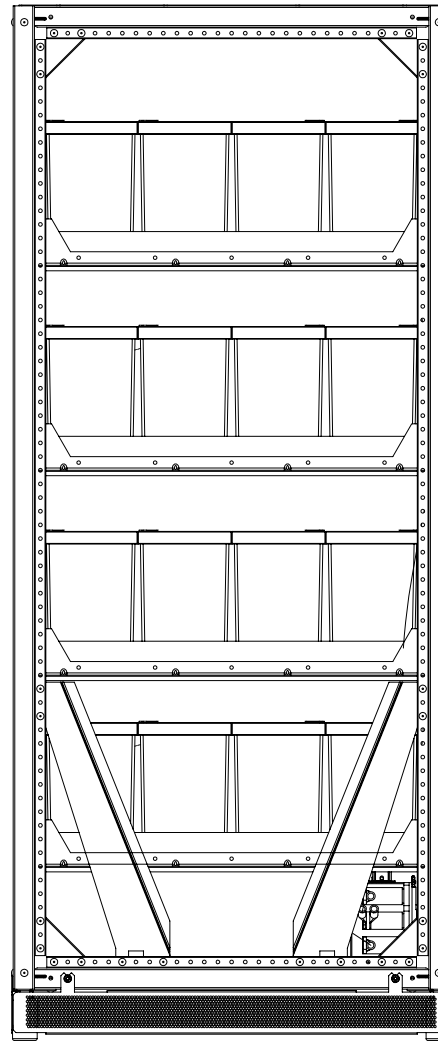
APPROVED: MATTHIEU SAAS 18-MAR-14

PROJECT: SUBMITTAL DRAWINGS SHEET 2 OF 4

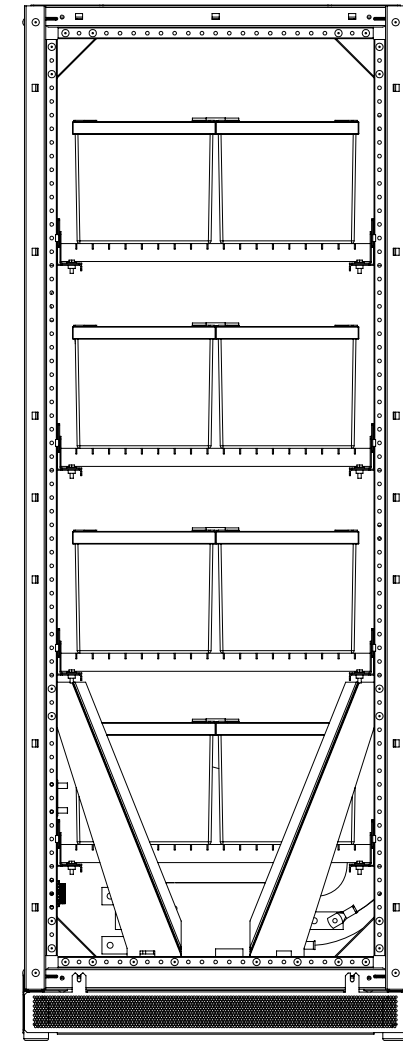
FIRST ANGLE PROJECTION



FRONT VIEW



LEFT SIDE VIEW



REAR VIEW

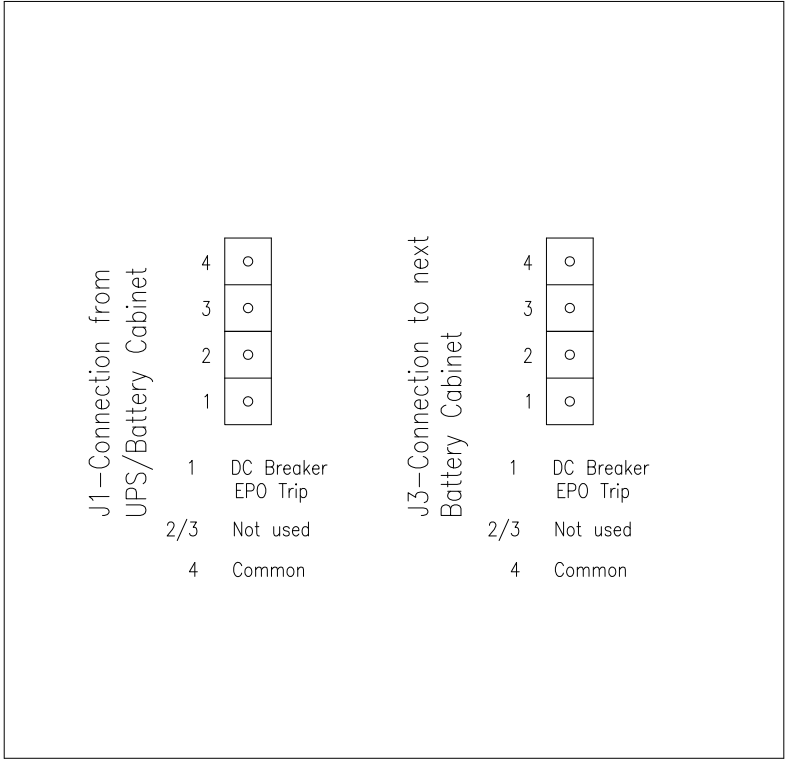
NOTES:

1. INSTALLATION MUST COMPLY ALL APPLICABLE NATIONAL AND LOCAL ELECTRICAL REGULATIONS
2. PLEASE REFER TO PRODUCT MANUAL FOR DETAILED INFORMATION.
3. ALL DIMENSIONS ARE IN MILLIMETERS. UNLESS OTHERWISE SPECIFIED.

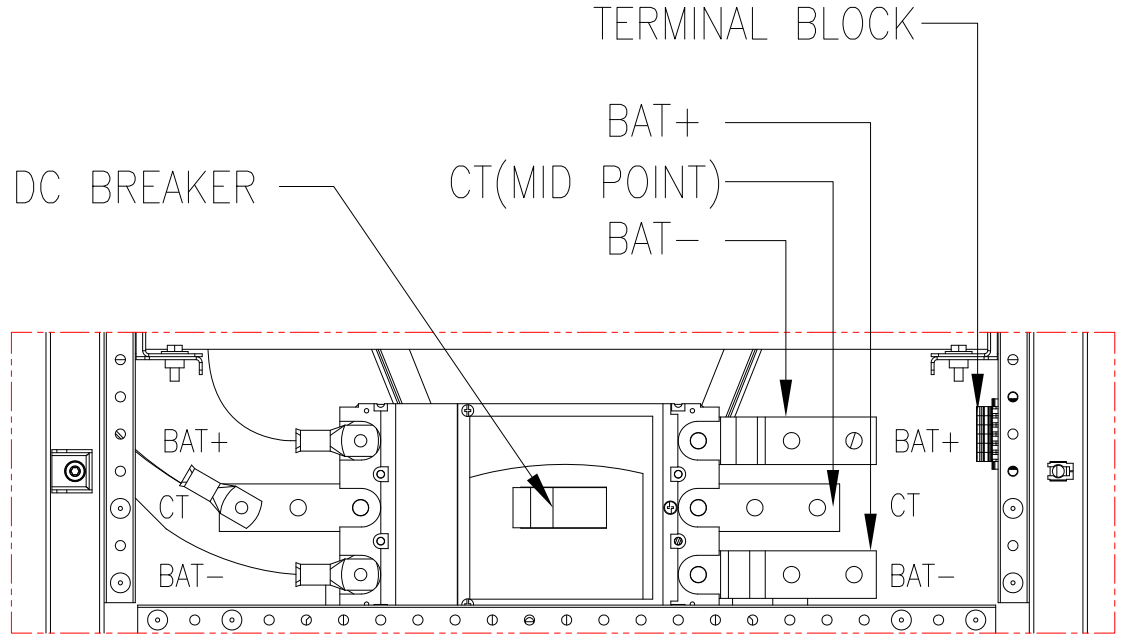
THIS DRAWING AND SPECIFICATIONS HEREIN ARE THE PROPERTY OF SCHNEIDER ELECTRIC AND SHALL NOT BE COPIED, REPRODUCED OR USED IN WHOLE OR IN PART, AS THE BASIS FOR THE MANUFACTURE OR SALE OF ITEMS WITHOUT WRITTEN PERMISSION FROM SCHNEIDER ELECTRIC. THIS DRAWING IS BASED UPON LATEST AVAILABLE INFORMATION AND IS SUBJECT TO CHANGE WITHOUT NOTICE.



TITLE:	SYMMETRA PX ET 160 BATTERY CABINET WITH XPV2500 BATTERIES INTERNAL VIEW		DWG NO:	SYPBV96K160HB	REV:	0
PROJECT:	SUBMITTAL DRAWINGS	SHEET 3 OF 4	DRAWN:	C KRISHNA	18-MAR-14	FIRST ANGLE PROJECTION
			ENGINEER:	BIN-COMPPELL BAI	18-MAR-14	
			APPROVED:	MATTHIEU SAAS	18-MAR-14	



EPO INTERFACE FOR DC BREAKER TRIP



DETAIL-A  
(CIRCUIT BREAKER AND  
INPUT/OUTPUT DETAILS-ENLARGED VIEW)

- NOTES:
1. INSTALLATION MUST COMPLY ALL APPLICABLE NATIONAL AND LOCAL ELECTRICAL REGULATIONS
  2. PLEASE REFER TO PRODUCT MANUAL FOR DETAILED INFORMATION.
  3. ALL DIMENSIONS ARE IN MILLIMETERS. UNLESS OTHERWISE SPECIFIED.

THIS DRAWING AND SPECIFICATIONS HEREIN ARE THE PROPERTY OF SCHNEIDER ELECTRIC AND SHALL NOT BE COPIED, REPRODUCED OR USED IN WHOLE OR IN PART, AS THE BASIS FOR THE MANUFACTURE OR SALE OF ITEMS WITHOUT WRITTEN PERMISSION FROM SCHNEIDER ELECTRIC. THIS DRAWING IS BASED UPON LATEST AVAILABLE INFORMATION AND IS SUBJECT TO CHANGE WITHOUT NOTICE.



TITLE:  
SYMMETRA PX ET 160  
BATTERY CABINET  
WITH XPV2500 BATTERIES  
WIRING DETAILS

PROJECT: SUBMITTAL DRAWINGS SHEET 4 OF 4

DWG NO: SYPBV96K160HB

DRAWN: C KRISHNA	18-MAR-14
ENGINEER: BIN-COMPPELL BAI	18-MAR-14
APPROVED: MATTHIEU SAAS	18-MAR-14

REV. 0

FIRST ANGLE PROJECTION