

- NOTES:
1. INSTALLATION MUST COMPLY ALL APPLICABLE NATIONAL AND LOCAL ELECTRICAL REGULATIONS
 2. PLEASE REFER TO PRODUCT MANUAL FOR DETAILED INFORMATION.
 3. ALL DIMENSIONS ARE IN MILLIMETERS. UNLESS OTHERWISE SPECIFIED.
 4. CABLE ENTRY IS FROM BOTTOM OF THE CABINET.
 5. NET WEIGHT OF THE ENCLOSURE WITH BATTERY UNITS INSTALLED IS 830 kg.
 6. COG DETAILS.

CENTER OF GRAVITY	WITH BATTERIES
X DISTANCE	356 mm
Y DISTANCE	900 mm
Z DISTANCE	360 mm

THIS DRAWING AND SPECIFICATIONS HEREIN ARE THE PROPERTY OF SCHNEIDER ELECTRIC AND SHALL NOT BE COPIED, REPRODUCED OR USED IN WHOLE OR IN PART, AS THE BASIS FOR THE MANUFACTURE OR SALE OF ITEMS WITHOUT WRITTEN PERMISSION FROM SCHNEIDER ELECTRIC. THIS DRAWING IS BASED UPON LATEST AVAILABLE INFORMATION AND IS SUBJECT TO CHANGE WITHOUT NOTICE.



TITLE: SYMMETRA PX ET 160 BATTERY CABINET WITH XP12V1800 BATTERIES MAIN MECHANICAL

PROJECT: SUBMITTAL DRAWINGS SHEET 1 OF 4

DWG NO: SYPBV96K160HA

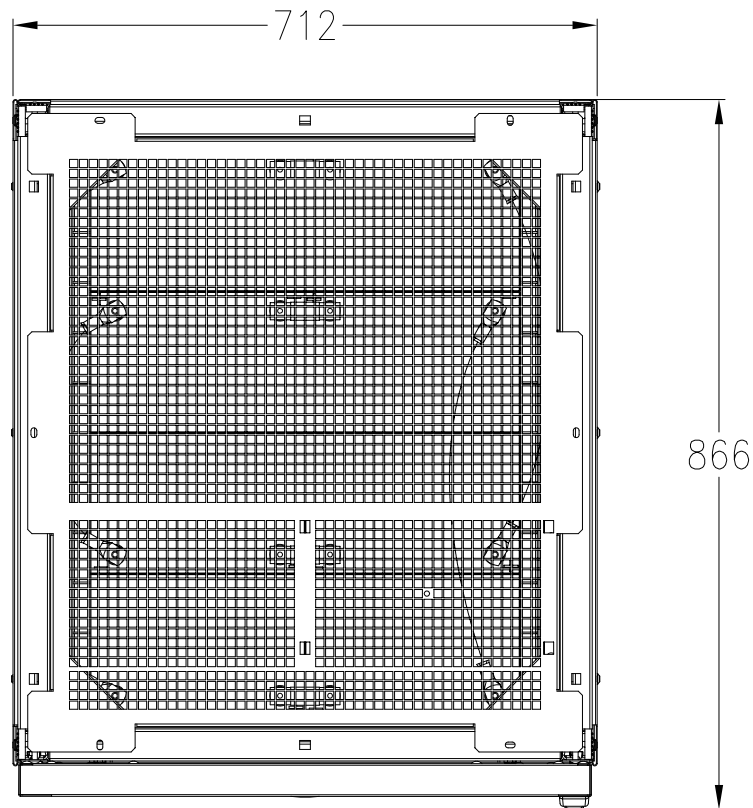
DRAWN: C KRISHNA 18-MAR-14

ENGINEER: BIN-COMPPELL BAI 18-MAR-14

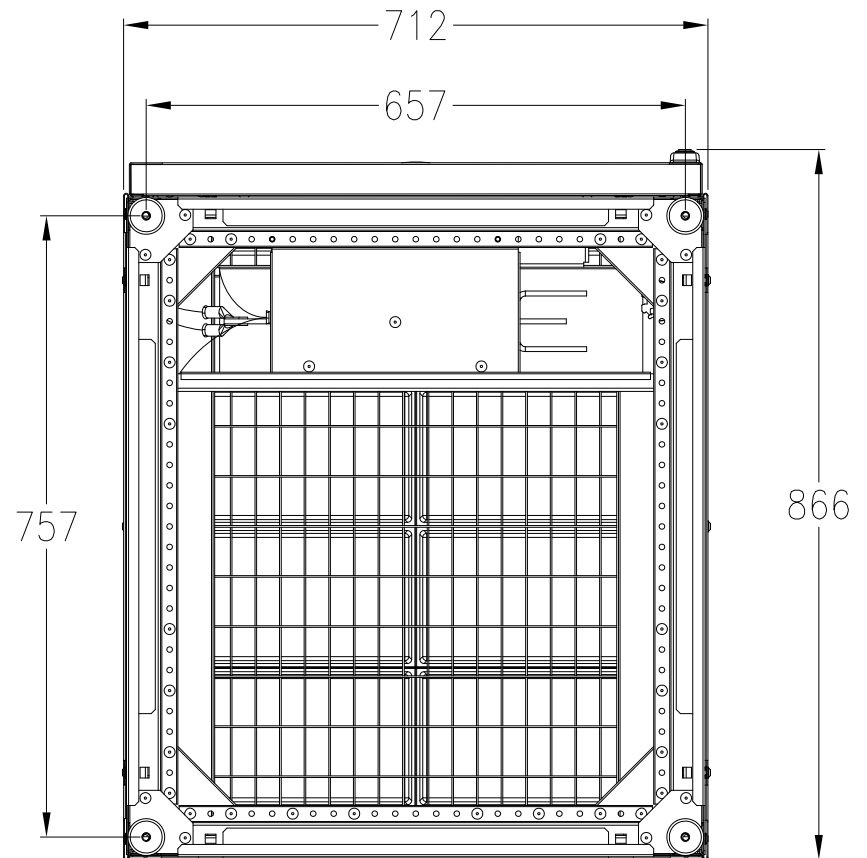
APPROVED: MATTHIEU SAAS 18-MAR-14

REV. 0

FIRST ANGLE PROJECTION



TOP VIEW



BOTTOM VIEW

NOTES:

1. INSTALLATION MUST COMPLY ALL APPLICABLE NATIONAL AND LOCAL ELECTRICAL REGULATIONS
2. PLEASE REFER TO PRODUCT MANUAL FOR DETAILED INFORMATION.
3. ALL DIMENSIONS ARE IN MILLIMETERS. UNLESS OTHERWISE SPECIFIED.
4. FOR BOTTOM CABLE ENTRY REMOVE BOTTOM CONDUIT PLATES, DRILL/PUNCH HOLES WITH-IN PROVIDED CABLE ENTRY AREA. REFIT COVER AND INSTALL CONDUITS.

THIS DRAWING AND SPECIFICATIONS HEREIN ARE THE PROPERTY OF SCHNEIDER ELECTRIC AND SHALL NOT BE COPIED, REPRODUCED OR USED IN WHOLE OR IN PART, AS THE BASIS FOR THE MANUFACTURE OR SALE OF ITEMS WITHOUT WRITTEN PERMISSION FROM SCHNEIDER ELECTRIC. THIS DRAWING IS BASED UPON LATEST AVAILABLE INFORMATION AND IS SUBJECT TO CHANGE WITHOUT NOTICE.



TITLE:

SYMMETRA PX ET 160
BATTERY CABINET
WITH XP12V1800 BATTERIES
TOP AND BOTTOM VIEW

DWG NO:

SYPBV96K160HA

REV. 0

DRAWN:

C KRISHNA 18-MAR-14

ENGINEER:

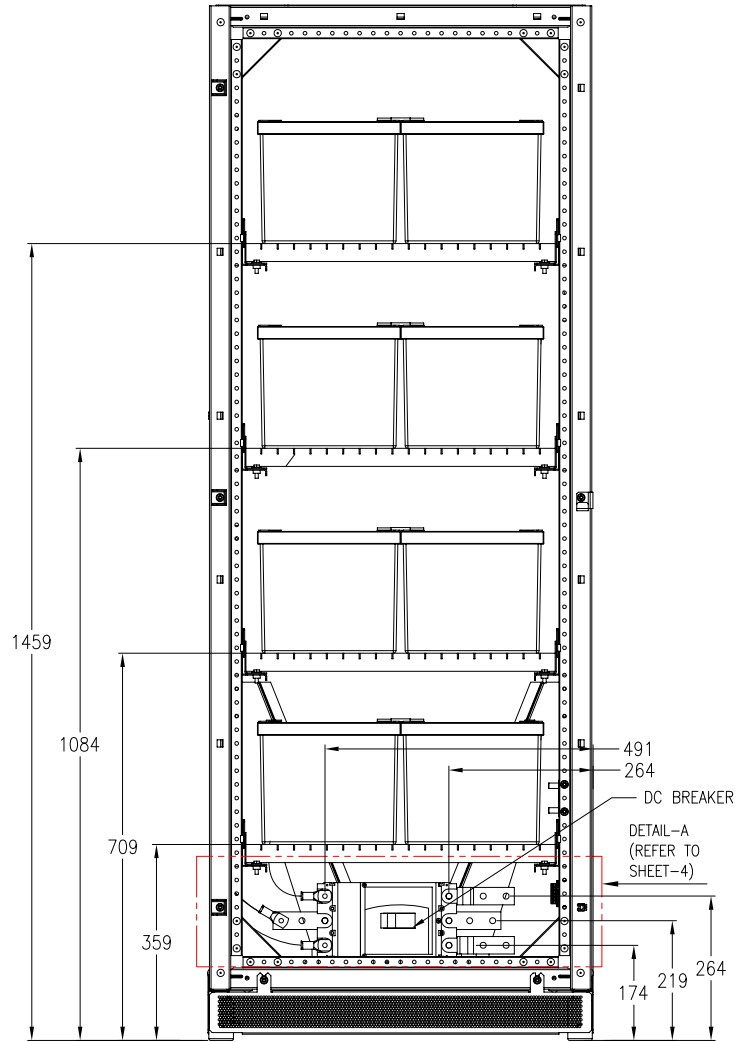
BIN-COMP BAI 18-MAR-14

APPROVED:

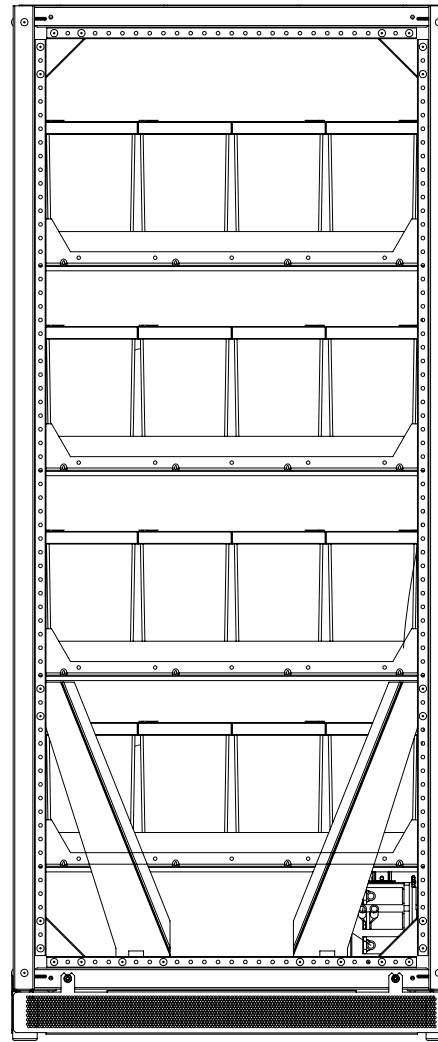
MATTHIEU SAAS 18-MAR-14

PROJECT: SUBMITTAL DRAWINGS SHEET 2 OF 4

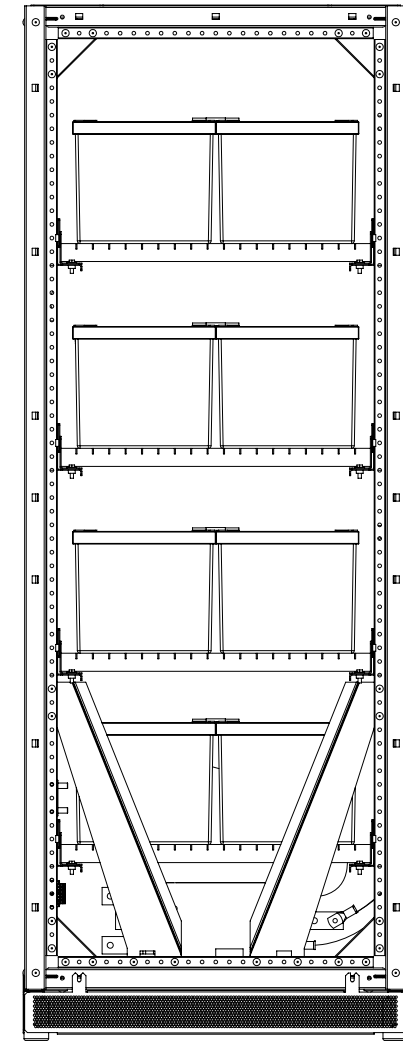
FIRST ANGLE PROJECTION



FRONT VIEW



LEFT SIDE VIEW



REAR VIEW

NOTES:

1. INSTALLATION MUST COMPLY ALL APPLICABLE NATIONAL AND LOCAL ELECTRICAL REGULATIONS
2. PLEASE REFER TO PRODUCT MANUAL FOR DETAILED INFORMATION.
3. ALL DIMENSIONS ARE IN MILLIMETERS. UNLESS OTHERWISE SPECIFIED.

THIS DRAWING AND SPECIFICATIONS HEREIN ARE THE PROPERTY OF SCHNEIDER ELECTRIC AND SHALL NOT BE COPIED, REPRODUCED OR USED IN WHOLE OR IN PART, AS THE BASIS FOR THE MANUFACTURE OR SALE OF ITEMS WITHOUT WRITTEN PERMISSION FROM SCHNEIDER ELECTRIC. THIS DRAWING IS BASED UPON LATEST AVAILABLE INFORMATION AND IS SUBJECT TO CHANGE WITHOUT NOTICE.



TITLE:

SYMMETRA PX ET 160
BATTERY CABINET
WITH XP12V1800 BATTERIES
INTERNAL VIEW

DWG NO:

SYPBV96K160HA

REV: 0

DRAWN:

C KRISHNA

18-MAR-14

ENGINEER:

BIN-COMPPELL BAI

18-MAR-14

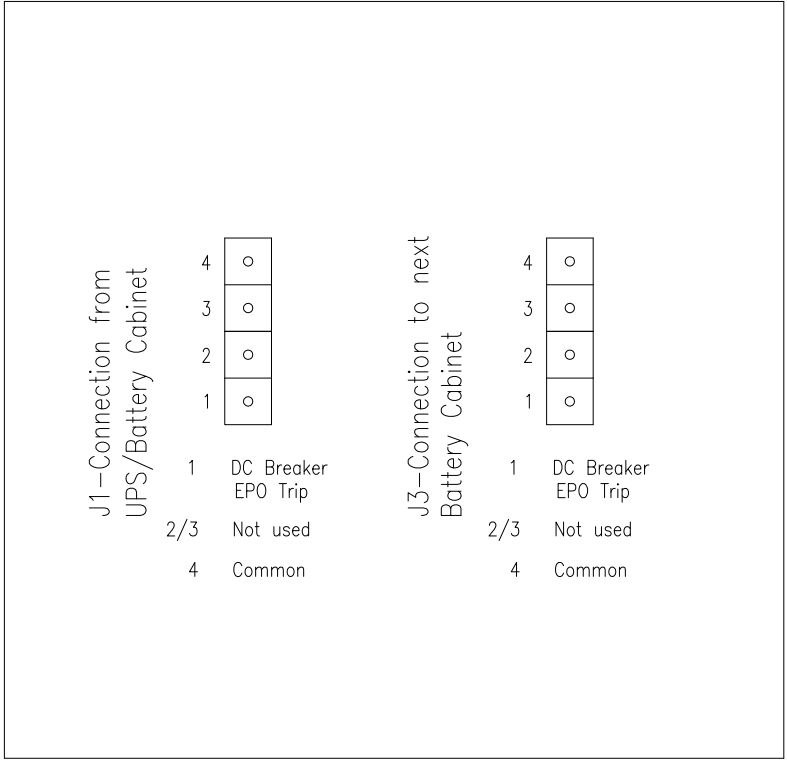
APPROVED:

MATTHIEU SAAS

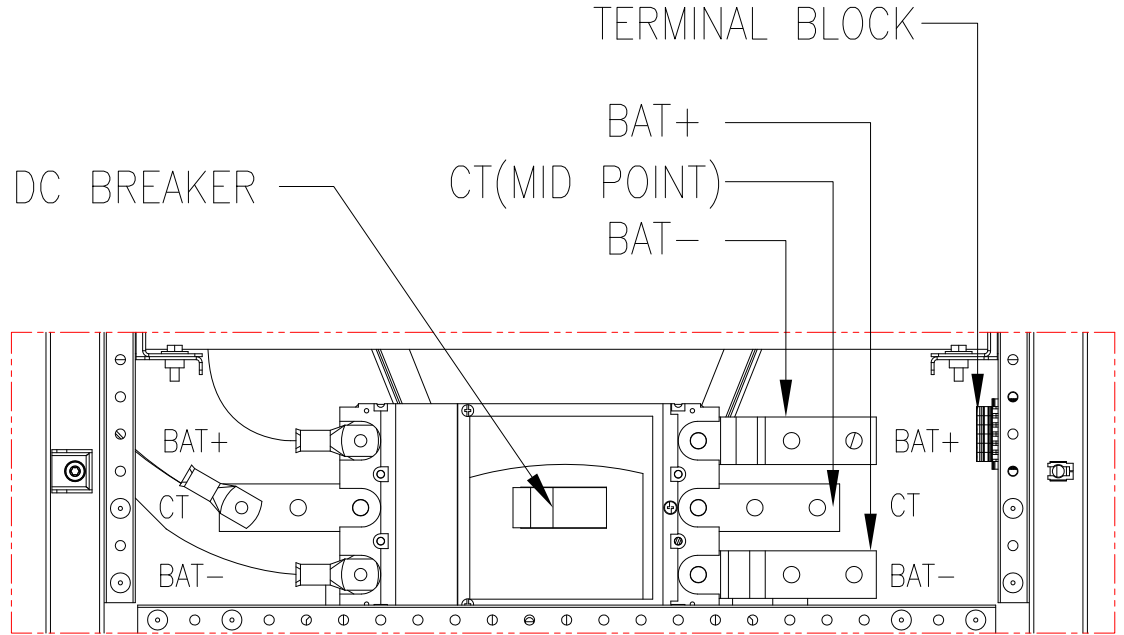
18-MAR-14

PROJECT: SUBMITTAL DRAWINGS SHEET 3 OF 4

FIRST ANGLE PROJECTION



EPO INTERFACE FOR DC BREAKER TRIP



DETAIL-A
(CIRCUIT BREAKER AND INPUT/OUTPUT DETAILS—ENLARGED VIEW)

- NOTES:
1. INSTALLATION MUST COMPLY ALL APPLICABLE NATIONAL AND LOCAL ELECTRICAL REGULATIONS
 2. PLEASE REFER TO PRODUCT MANUAL FOR DETAILED INFORMATION.
 3. ALL DIMENSIONS ARE IN MILLIMETERS. UNLESS OTHERWISE SPECIFIED.

THIS DRAWING AND SPECIFICATIONS HEREIN ARE THE PROPERTY OF SCHNEIDER ELECTRIC AND SHALL NOT BE COPIED, REPRODUCED OR USED IN WHOLE OR IN PART, AS THE BASIS FOR THE MANUFACTURE OR SALE OF ITEMS WITHOUT WRITTEN PERMISSION FROM SCHNEIDER ELECTRIC. THIS DRAWING IS BASED UPON LATEST AVAILABLE INFORMATION AND IS SUBJECT TO CHANGE WITHOUT NOTICE.



TITLE:
SYMMETRA PX ET 160
BATTERY CABINET
WITH XP12V1800 BATTERIES
WIRING DETAILS

PROJECT: SUBMITTAL DRAWINGS SHEET 4 OF 4

DWG NO: SYPBV96K160HA

DRAWN: C KRISHNA	18-MAR-14
ENGINEER: BIN-COMPPELL BAI	18-MAR-14
APPROVED: MATTHIEU SAAS	18-MAR-14

REV. 0

FIRST ANGLE PROJECTION