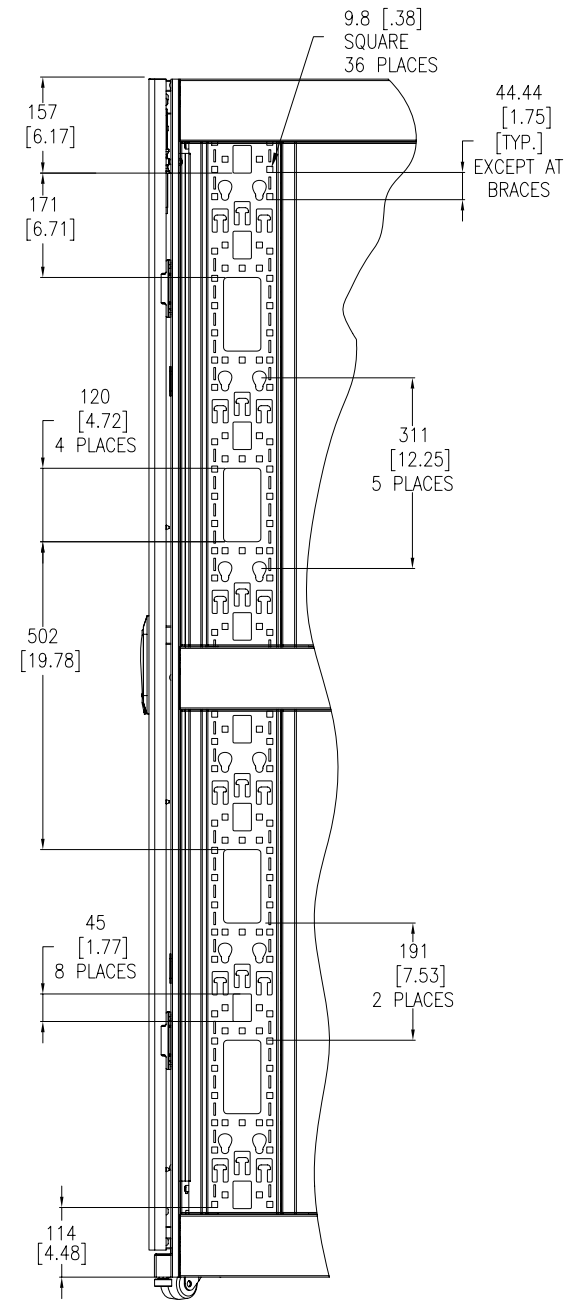


**NOTES:**

1. INSTALLATION MUST COMPLY WITH NATIONAL AND LOCAL ELECTRICAL REGULATIONS.
2. PLEASE REFER TO THE PRODUCT MANUALS FOR DETAILED INFORMATION.
3. ALL DIMENSIONS ARE IN MILLIMETERS [INCHES].
4. NET WEIGHT OF UNIT IS 161.4 Kg [355 LBS].
5. CABLE ENTRY IS TOP OR BOTTOM OF UNIT.
6. FRONT AND REAR SERVICE ACCESS REQUIRED.
7. AIR FLOW AND SERVICE REQUIREMENTS, AS WELL AS MINIMUM CLEARANCE TO FIRE SUPPRESSION SYSTEMS SHOULD BE CONSIDERED WHEN LOCATING THE ENCLOSURE.



DETAIL-A  
(RACK MOUNT PDU MOUNTING DETAILS)

THIS DRAWING AND SPECIFICATIONS HEREIN ARE THE PROPERTY OF SCHNEIDER ELECTRIC AND SHALL NOT BE COPIED, REPRODUCED OR USED IN WHOLE OR IN PART, AS THE BASIS FOR THE MANUFACTURE OR SALE OF ITEMS WITHOUT WRITTEN PERMISSION FROM SCHNEIDER ELECTRIC. THIS DRAWING IS BASED UPON LATEST AVAILABLE INFORMATION AND IS SUBJECT TO CHANGE WITHOUT NOTICE.



TITLE: NETSHELTER SX 42U NETWORKING ENCLOSURE WITH SIDES 750mm WIDE x 1200mm DEEP MAIN MECHANICAL

DWG NO: AR3340

REV: -

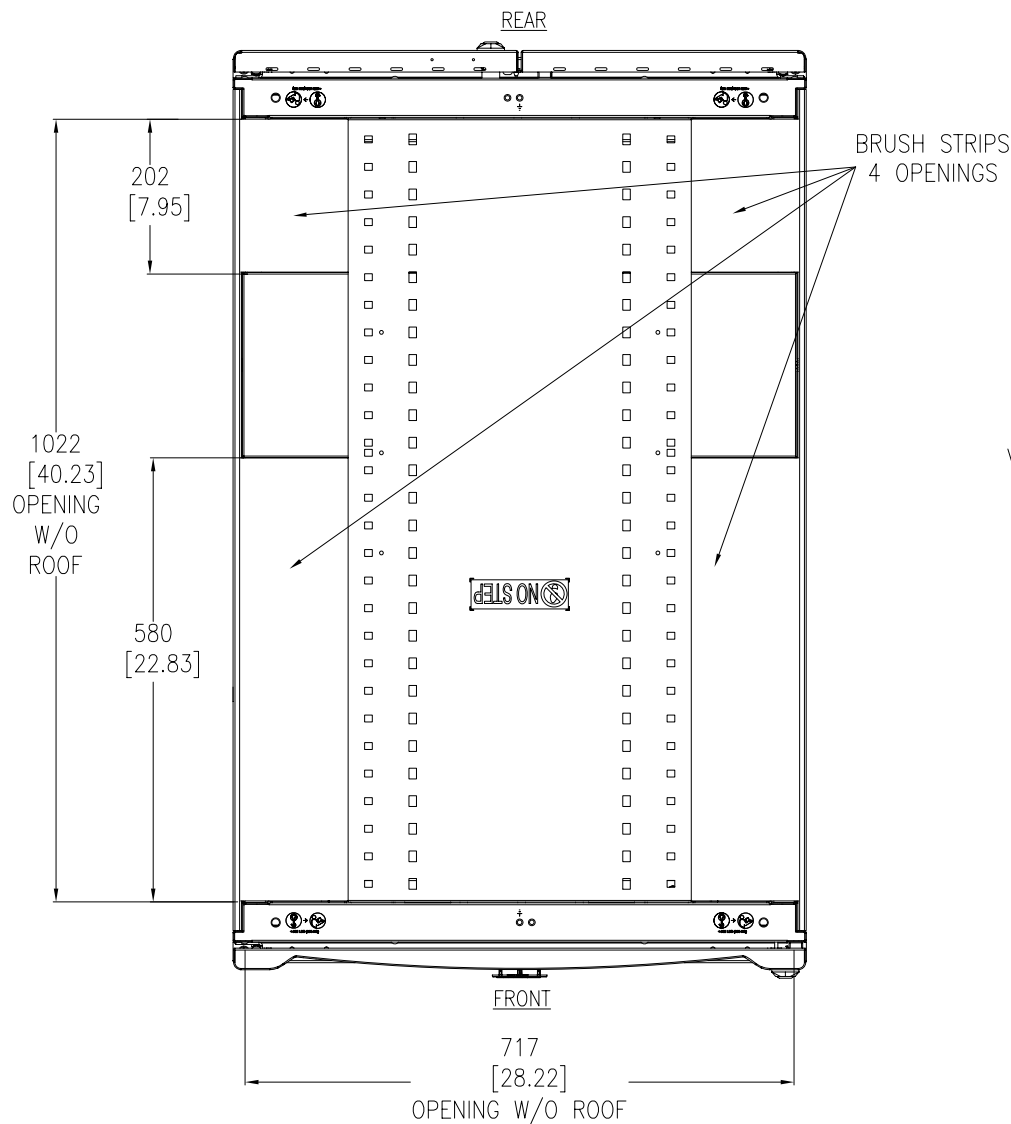
DRAWN: C KRISHNA 26-NOV-10

FIRST ANGLE PROJECTION

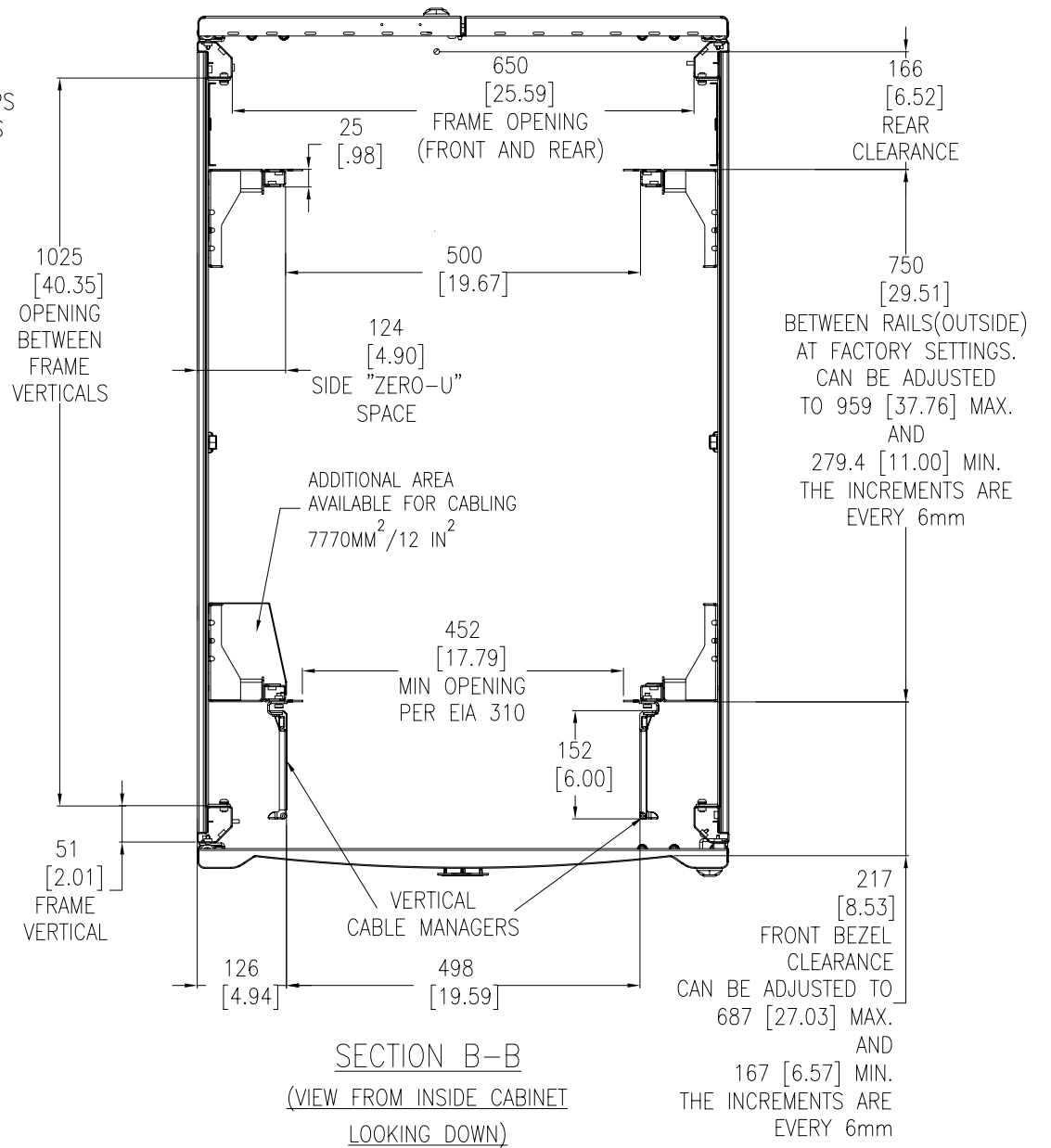
ENGINEER: J.BERGESCH/S.NEAL 26-NOV-10

PROJECT: SUBMITTAL DRAWINGS SHEET 1 OF 4

APPROVED: MLEPARD/BERGEMAN/ C LARSEN/S WISH 26-NOV-10



TOP VIEW  
CABLE OPENINGS  
(BRUSH STRIPS REMOVED)



SECTION B-B  
(VIEW FROM INSIDE CABINET  
LOOKING DOWN)

NOTES:

1. INSTALLATION SHALL COMPLY WITH ALL APPLICABLE NATIONAL, STATE AND LOCAL CODES.
2. PLEASE REFER TO PRODUCT DOCUMENTATION FOR FURTHER DETAILS
3. ALL DIMENSIONS ARE IN MILLIMETERS [INCHES], UNLESS OTHERWISE SPECIFIED.

THIS DRAWING AND SPECIFICATIONS HEREIN ARE THE PROPERTY OF SCHNEIDER ELECTRIC AND SHALL NOT BE COPIED, REPRODUCED OR USED IN WHOLE OR IN PART, AS THE BASIS FOR THE MANUFACTURE OR SALE OF ITEMS WITHOUT WRITTEN PERMISSION FROM SCHNEIDER ELECTRIC. THIS DRAWING IS BASED UPON LATEST AVAILABLE INFORMATION AND IS SUBJECT TO CHANGE WITHOUT NOTICE.



TITLE: NETSHELTER SX 42U NETWORKING ENCLOSURE WITH SIDES 750mm WIDE x 1200mm DEEP TOP AND SECTIONAL VIEW

DWG NO: AR3340

REV: -

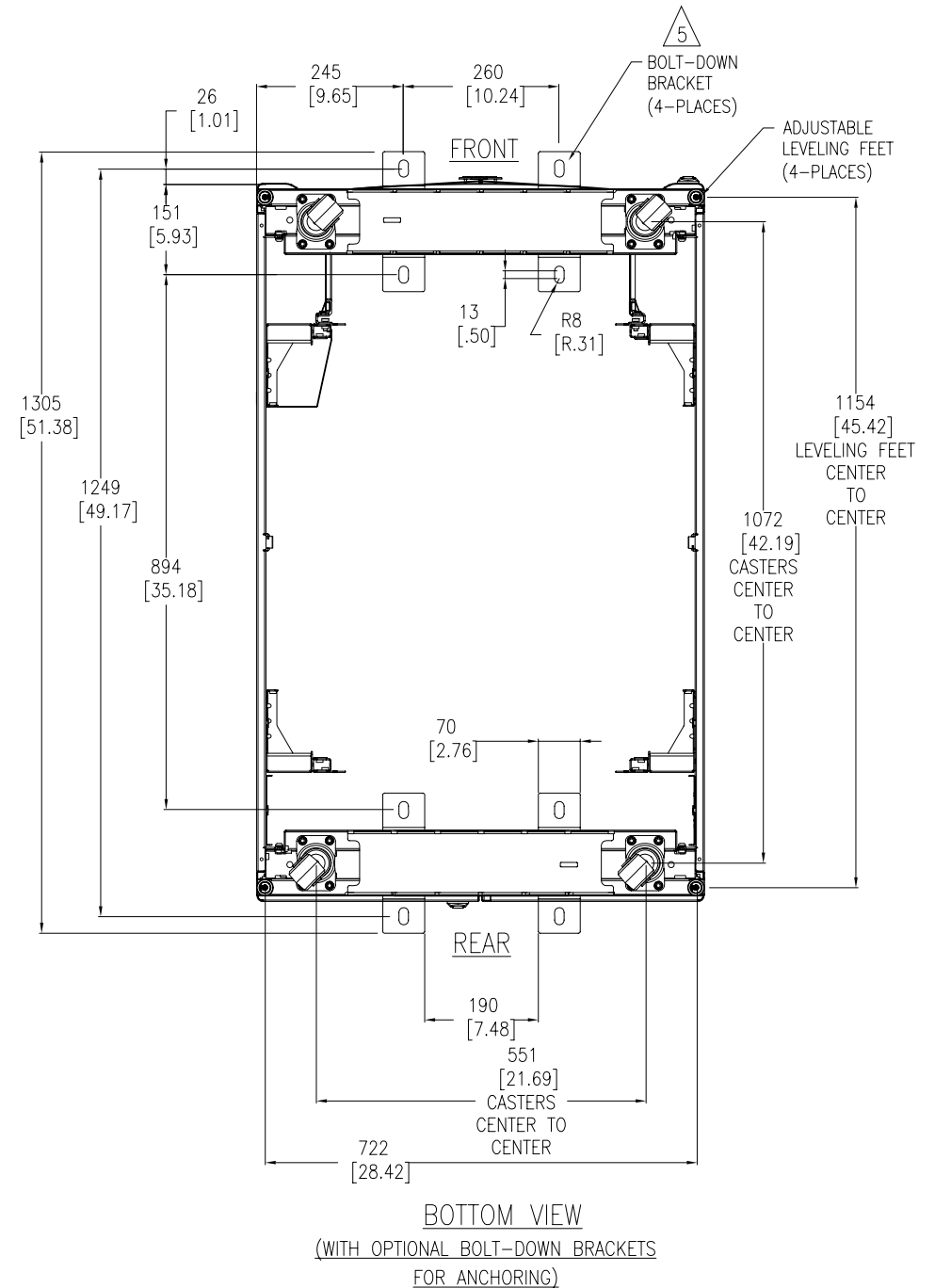
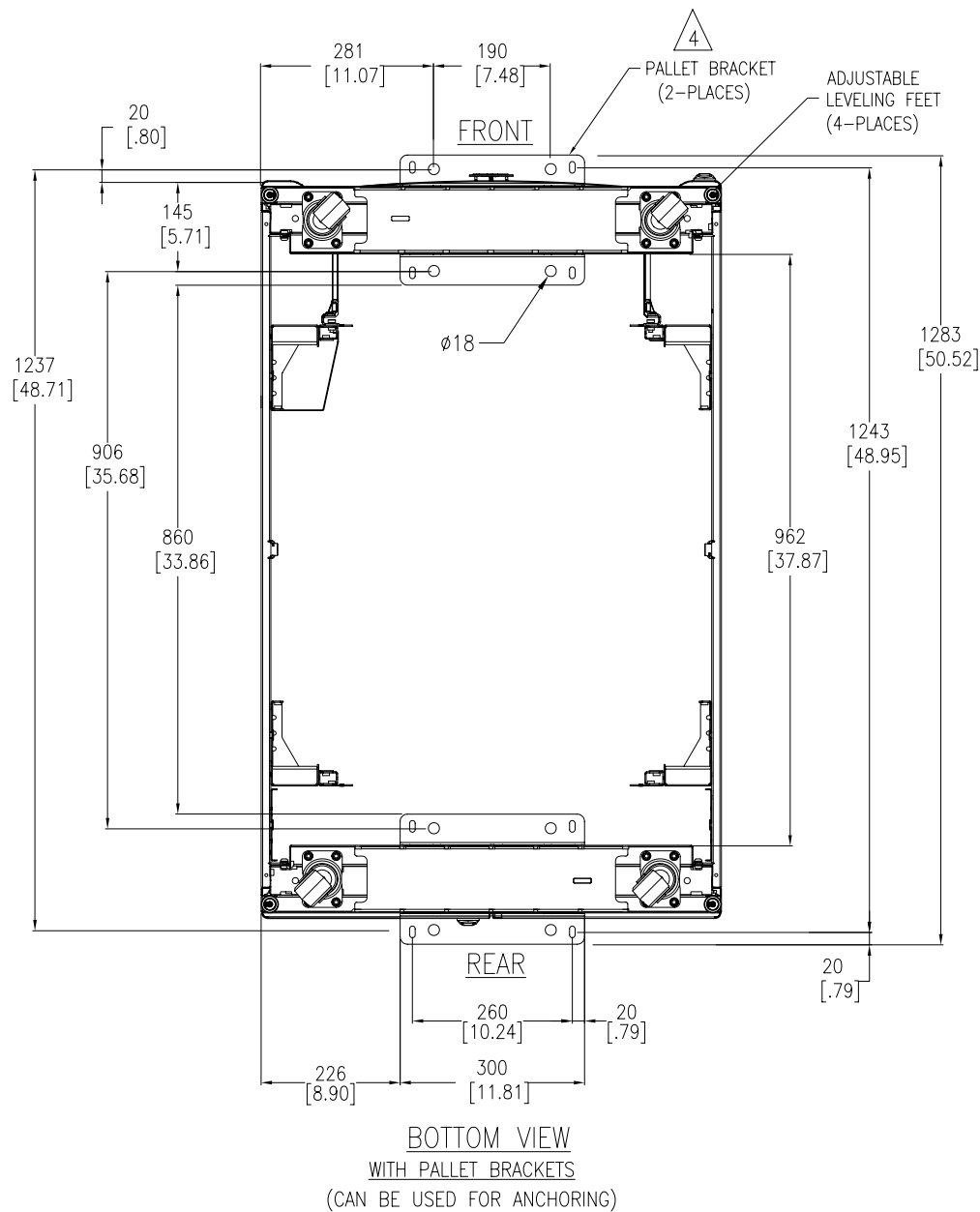
DRAWN: C KRISHNA 26-NOV-10

FIRST ANGLE PROJECTION

ENGINEER: J.BERGESCH/S.NEAL 26-NOV-10

PROJECT: SUBMITTAL DRAWINGS SHEET 2 OF 4

APPROVED: ALEPHO/RESHEROAN/ C LARSEN/S WAGH 26-NOV-10



**NOTES:**

1. INSTALLATION SHALL COMPLY WITH ALL APPLICABLE NATIONAL, STATE AND LOCAL CODES.
2. PLEASE REFER TO PRODUCT MANUALS FOR ADDITIONAL DETAILS.
3. UNLESS OTHERWISE SPECIFIED, ALL DIMENSIONS ARE IN MILLIMETERS [INCHES].
- △ 4. ANCHORING CAN BE INSTALLED EITHER INSIDE OR OUTSIDE THE NetShelter WITH ONE BRACKET AT FRONT AND ONE IN BACK.
- △ 5. BOLT-DOWN KIT (SKU# AR7701) IS OPTIONAL AND MUST BE ORDERED SEPARATELY.

THIS DRAWING AND SPECIFICATIONS HEREIN ARE THE PROPERTY OF SCHNEIDER ELECTRIC AND SHALL NOT BE COPIED, REPRODUCED OR USED IN WHOLE OR IN PART, AS THE BASIS FOR THE MANUFACTURE OR SALE OF ITEMS WITHOUT WRITTEN PERMISSION FROM SCHNEIDER ELECTRIC. THIS DRAWING IS BASED UPON LATEST AVAILABLE INFORMATION AND IS SUBJECT TO CHANGE WITHOUT NOTICE.



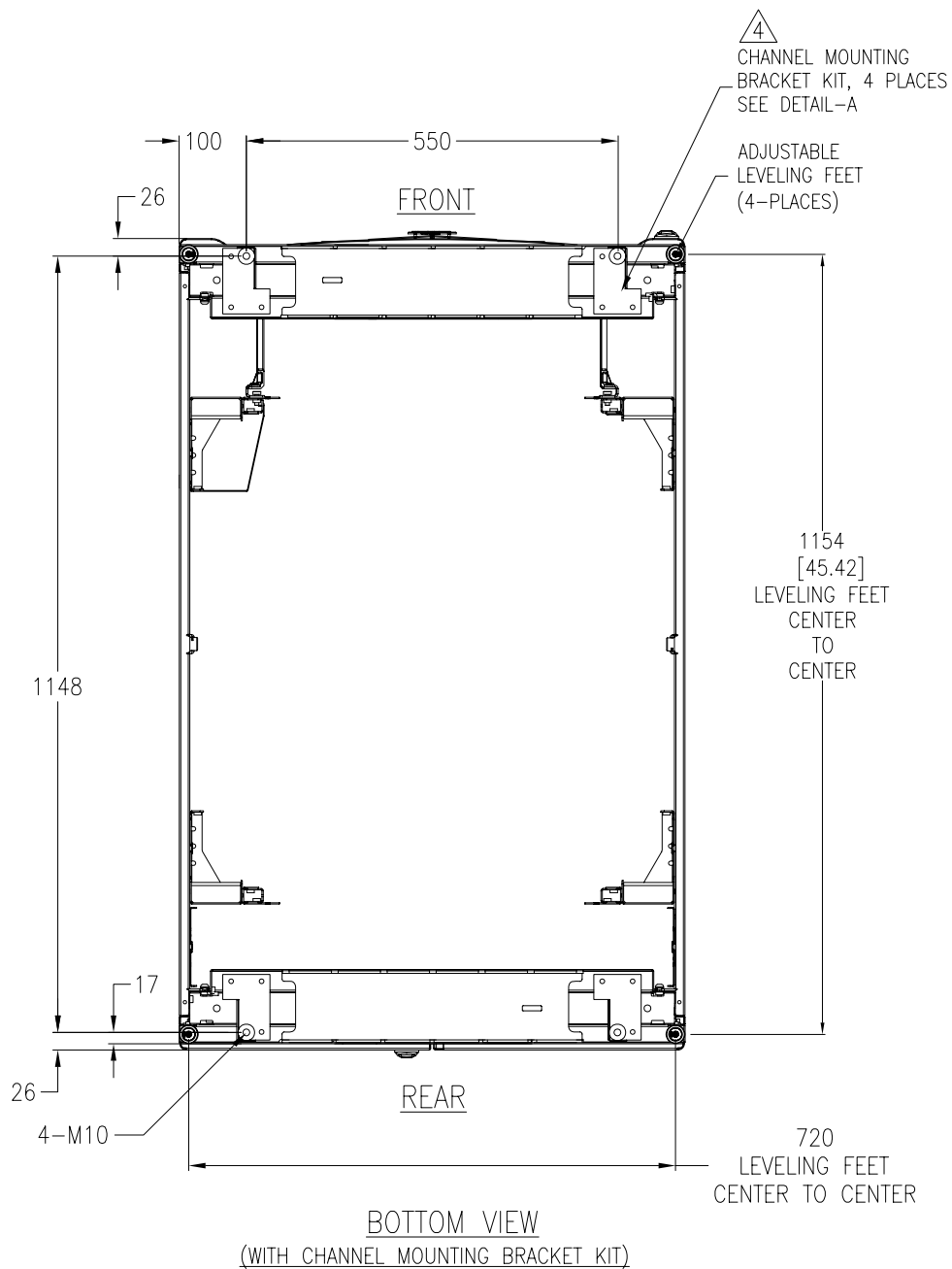
TITLE: NETSHELTER SX 42U NETWORKING ENCLOSURE WITH SIDES 750mm WIDE x 1200mm DEEP BOTTOM VIEWS AND ANCHORING

PROJECT: SUBMITTAL DRAWINGS SHEET 3 OF 4

DWG NO: AR3340

|   |           |
|---|-----------|
| DRAWN: C KRISHNA                              | 26-NOV-10 |
| ENGINEER: J.BERGESCH/S.NEAL                   | 26-NOV-10 |
| APPROVED: ALEPHARD/RESHERDAN/ C LARSEN/S WAGH | 26-NOV-10 |

REV. -  
FIRST ANGLE PROJECTION

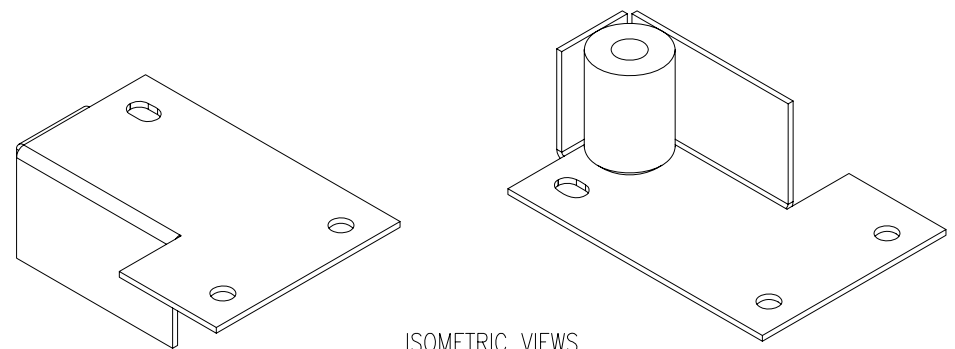
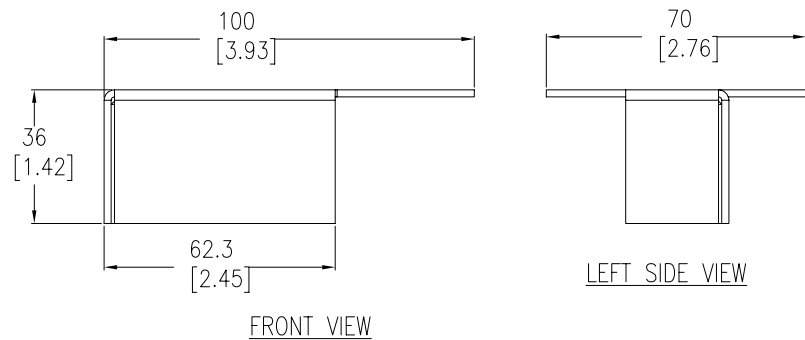
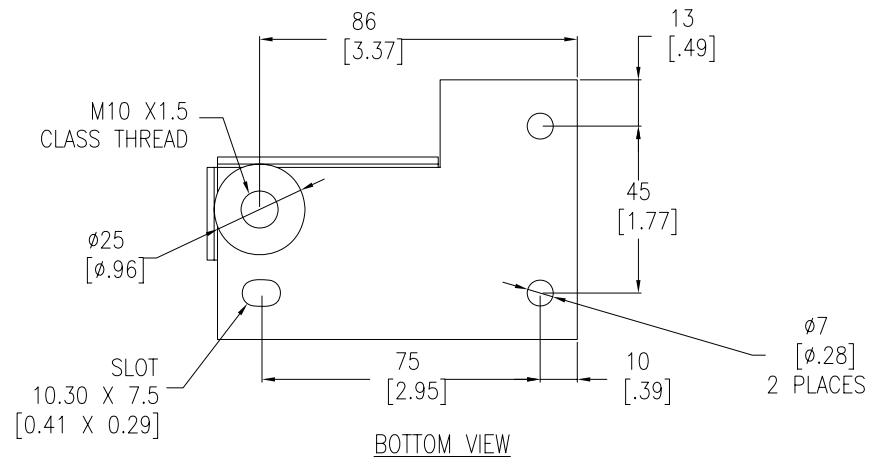


**BOTTOM VIEW**  
(WITH CHANNEL MOUNTING BRACKET KIT)

**NOTES:**

1. INSTALLATION MUST COMPLY WITH NATIONAL AND LOCAL ELECTRICAL REGULATIONS.
2. PLEASE REFER TO INSTALLATION MANUAL: 990-2912 FOR CHANNEL BRACKET INSTALLATION DETAILS.
3. UNLESS OTHERWISE SPECIFIED, ALL DIMENSIONS ARE IN MILLIMETERS [INCHES].
- △ 4. CHANNEL MOUNTING BRACKET KIT (SKU# AR7709) IS OPTIONAL AND HAS TO BE ORDERED SEPERATELY.

**DETAIL-A**  
**CHANNEL MOUNTING BRACKET KIT**  
(AR7709)



THIS DRAWING AND SPECIFICATIONS HEREIN ARE THE PROPERTY OF SCHNEIDER ELECTRIC AND SHALL NOT BE COPIED, REPRODUCED OR USED IN WHOLE OR IN PART, AS THE BASIS FOR THE MANUFACTURE OR SALE OF ITEMS WITHOUT WRITTEN PERMISSION FROM SCHNEIDER ELECTRIC. THIS DRAWING IS BASED UPON LATEST AVAILABLE INFORMATION AND IS SUBJECT TO CHANGE WITHOUT NOTICE.



TITLE: NETSHELTER SX 42U NETWORKING ENCLOSURE WITH SIDES 750mm WIDE x 1200mm DEEP CHANNEL MOUNTING BRACKET KIT

PROJECT: SUBMITTAL DRAWINGS SHEET 4 OF 4

DWG NO: AR3340

DRAWN BY: C KRISHNA 26-NOV-10

ENGINEER: A.MIAO/J.SUN 26-NOV-10

APPROVED BY: [Signature] 26-NOV-10

REV: 0

FIRST ANGLE PROJECTION